

**Ambuja
Cement**

adani
Cement

ACC

**COMMITTED TO
BUILDING NATIONS
WITH GOODNESS**



Adani Group

Adani Group is the largest and fastest-growing portfolio of diversified businesses in India with interests in Logistics (seaports, airports, logistics, shipping and rail), Resources, Power Generation and Distribution, Renewable Energy, Gas and Infrastructure, Agro (commodities, edible oil, food products, cold storage and grain silos), Real Estate, Public Transport Infrastructure, Defence & Aerospace, and other sectors. It has created a world class transport and utility infrastructure portfolio that has a pan-India presence. Headquartered in Ahmedabad, India, Adani Group has positioned itself to be the market leader in its transport logistics and energy utility portfolio businesses focusing on large scale infrastructure development in India with O & M practices benchmarked to global standards. Adani owes its success and leadership position to its core philosophy of 'Nation Building' driven by 'Growth with Goodness' - a guiding principle for sustainable growth. Adani is committed to increase its ESG footprint by realigning its businesses with emphasis on climate protection and increasing community outreach through its CSR programme based on the principles of sustainability, diversity and shared values.



Vision

To be a world class leader in businesses that enrich lives and contribute to nations in building infrastructure through sustainable value creation.

Growth, the way it is meant to be

Growth, to us, isn't about the businesses we're involved in. Growth is about the real impact we can create. It's about the lives we can touch, the communities we can nourish, the future we can inspire. With our sheer size of operations, we have been able to reach out to the remotest of geographies with ease. Be it power transmission or solar energy generation or agri logistics, we go for large scale execution that benefits millions of Indians. We are proud of this quality of our operations, which we have consciously extended beyond our businesses, to impact healthcare, education, employment generation and creation of sustainable livelihoods for the communities that deserve them. It is the belief that growth can lead to goodness, which inspires us and drives us.



Cement Business

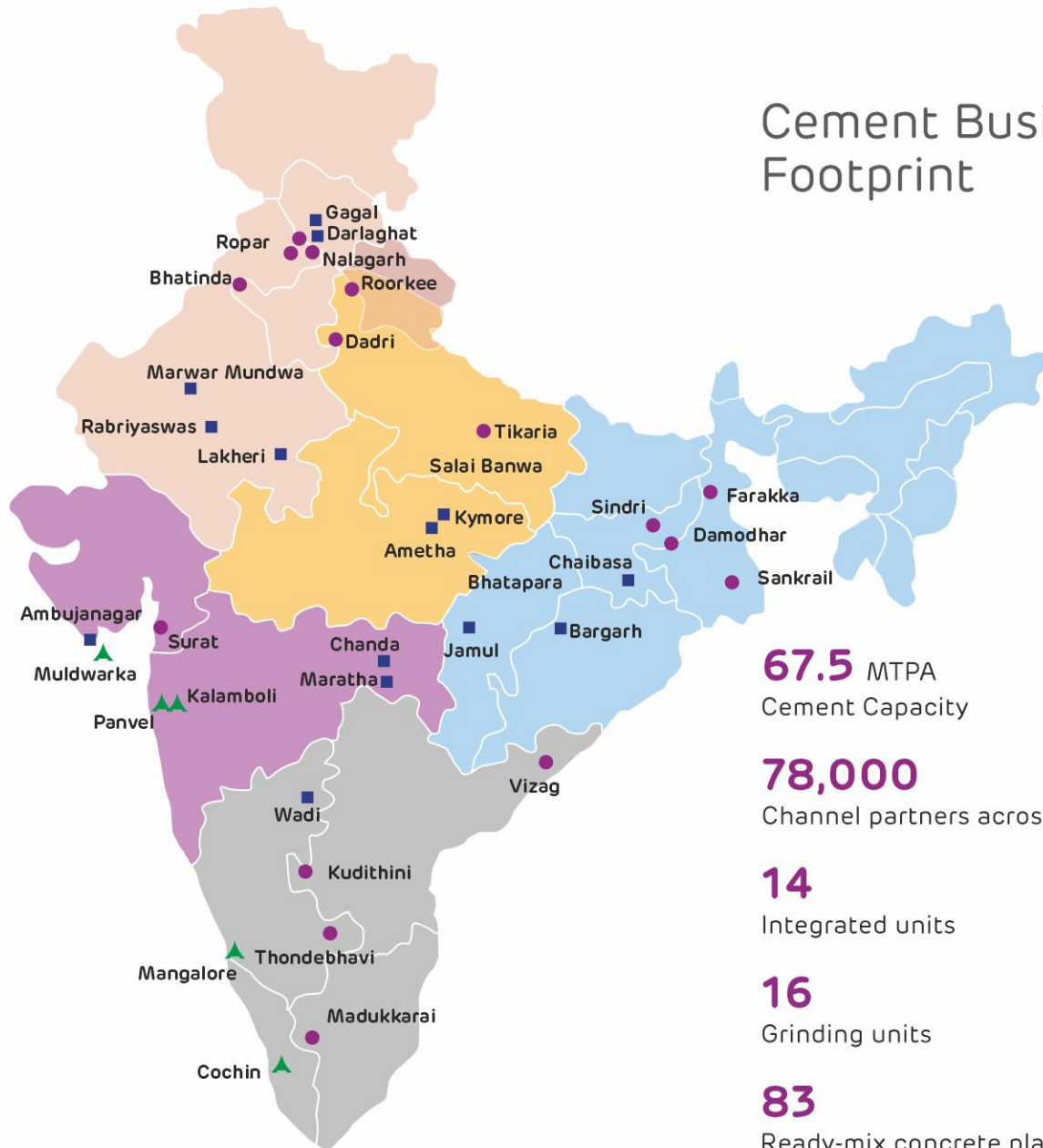
To bolster the cement business in India, Adani Group has been progressing steadily towards solidifying its presence in the cement vertical. It has achieved a significant milestone by acquiring major stakes in Ambuja Cements Limited and ACC Limited. This has cemented Adani Group's commitment to nation-building by becoming the second largest cement manufacturer in India.

For decades, Ambuja Cement and ACC have been the stalwarts of the cement industry and have garnered their place amongst the most trustworthy brands in India. Our footprint includes 14 integrated units, 16 grinding units, 83 ready-mix concrete plants and over 78,000 channel partners across India.

Adani Group through its cement business has established a new pillar of growth in its business. It is a strategic move for Adani, as it has been working on renewable power generation capabilities such as waste heat recovery systems, which has successfully minimised the effects of carbon emission. Consequently, Adani has embarked on the road to harnessing green energy in the cement industry by upholding the ethics of sustainability.



Cement Business Footprint



67.5 MTPA
Cement Capacity

78,000
Channel partners across India

14
Integrated units

16
Grinding units

83
Ready-mix concrete plants

■ Integrated Unit ● Grinding Unit ▲ Cement Terminal

Ambuja Cement

Ambuja Cements Ltd. is among the leading cement companies in India. It is a member of the Adani Group - the largest and fastest-growing portfolio of diversified sustainable businesses. Ambuja Cement is known for its unique products tailor-made for Indian climatic conditions, sustainable operations and initiatives that advance the company's philosophy of contributing to the larger good of the society, which has made it the most trusted brand in the Indian cement industry.

Ambuja Cement is known for its high strength, high performance cement. Our innovative products like Ambuja Kawach, Ambuja Plus, Ambuja Cool Walls and Ambuja Compocem, also help in significantly reducing carbon footprint.

Ambuja caters to its B2B customers by addressing their specific needs. While Ambuja Powercem & Ambuja Buildcem caters to the specific needs of the infra, institutional & housing segment, Ambuja Railcem is designed for railways.

In some cases, scale is all about going small. Ambuja's technical services engineers bring sophisticated techniques of concrete mixing and curing to the consumer in small towns. These techniques are designed in-house by adapting the practices of large construction projects.



31.5

million tonnes
of cement capacity



6

Integrated
manufacturing units



8

Grinding units



5

Bulk Cement
Terminals

**Ambuja
Cement**

ranked as

**India's Most
Trusted Cement Brand**

in 2022



The promise of 'Giant Compressive Strength'



Cement

Ambuja Cement
Ambuja Plus
Ambuja Kawach
Ambuja Compocem
Ambuja Powercem
Ambuja Buildcem
Ambuja Railcem

Solutions & Products

Concrete Blocks
Manufactured Sand
Jointing Mortar
Alccofine Micro Materials

Image :

Chenani Nashri Tunnel - Ambuja Cement a key partner
in India's longest highway tunnel in Jammu & Kashmir

ACC

ACC is a leading player in the Indian building materials space, with a pan-India operational and marketing presence and is amongst the country's 'Most Sustainable Companies' recognised for its best practices in environment management and corporate citizenship.

For over 80 years, ACC has been synonymous with cement, establishing its reputation as a preferred brand in building materials that consistently sets new benchmarks in research and innovative product development.

ACC's brand comprises the Gold range and Silver range of products assuring superior quality for general construction as well as for specialised applications and environments. The ready mix concrete product range provides one-stop solutions from basic requirements to high grades of concrete to build the country's tallest structures.

The success over the years can be attributed to the unrelenting focus on customer centricity, through its motto of 'Cementing Relationships' with every single interaction with range of stakeholders.



36

million tonnes
of cement capacity



11

Integrated
manufacturing units



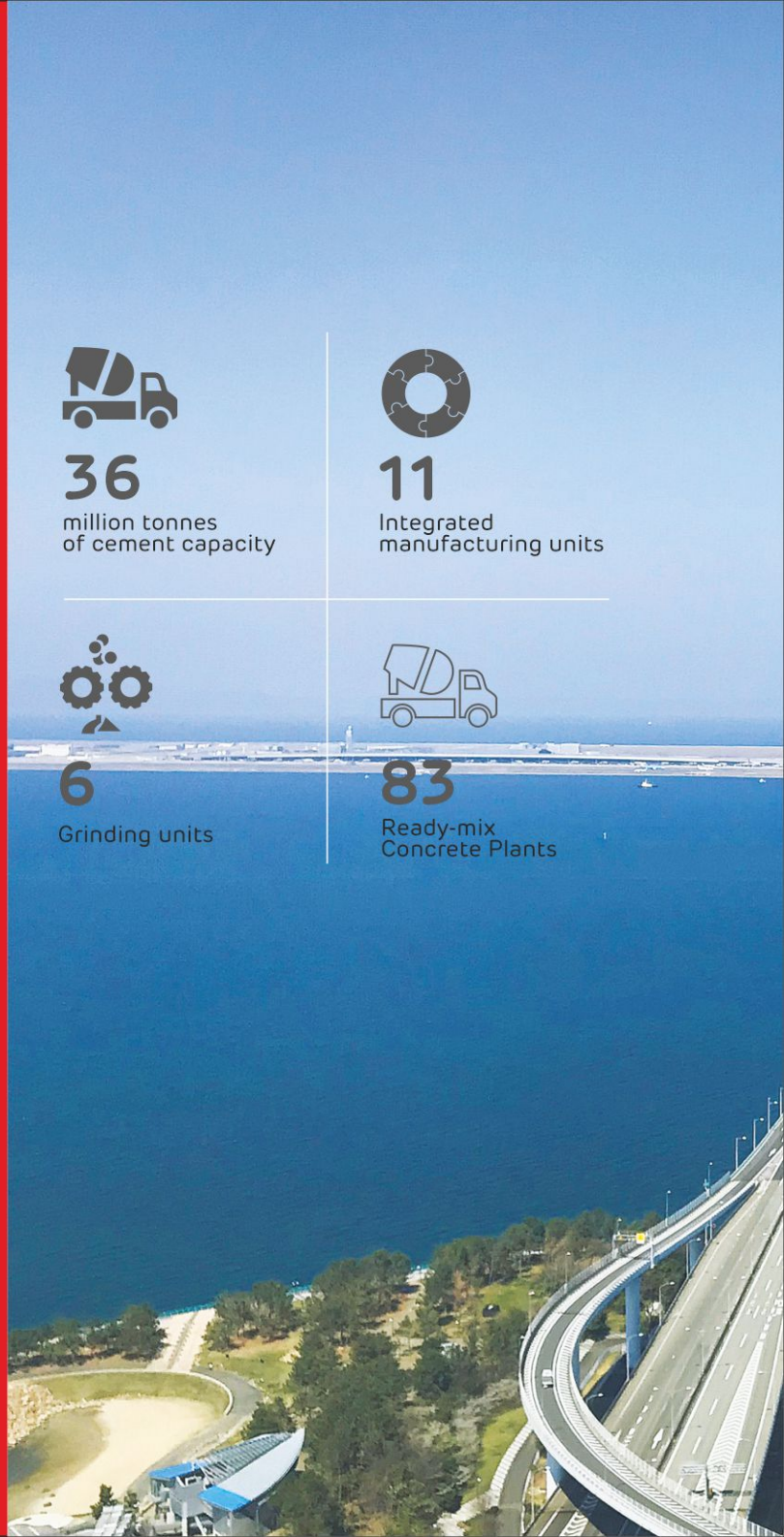
6

Grinding units



83

Ready-mix
Concrete Plants



Building India since 1936



Cement	RMX	Solutions & Products	Green Building Centers
Gold Water Shield, Concrete Plus, F2R Cement HPC, Suraksha Power, Suraksha Power Plus, Super Shaktimaan	Ready Mix Concrete Value added Concrete Solutions	Waterproofing Solutions Tile Adhesives Plasters	Wall Solutions Pavement Solutions Roofing & Pavement Solutions

Quarry to Lorry



Quarry and

Quarry
Limestone and other raw materials are extracted using drilling and blasting techniques.



Raw Materials Preparation		Clinker Production						Cement Grinding and Distribution		
Crusher The quarried material is reduced in size in crushers by compression or impact.	Transport The crushed raw material is transported to the cement plant, mainly using conveyors.	Mixing bed The limestone, clay and alternative raw materials are mixed and homogenized.	Dust filter Baghouse filters or electrostatic precipitators remove particles from kiln and mill exhaust gases.	Raw mill The homogenized raw materials are milled and dried in a mill.	Preheater The raw materials is preheated before entry into the kiln.	Kiln At flame temperatures up to 2,000°C and materials temperature up to 1,450°C the raw materials are transformed into clinker minerals.	Clinker cooler The molten clinker is rapidly cooled.	Clinker silo Cooled clinker is stored in preparation for grinding.	Cement mill Cement clinker is ground with around 5% of gypsum and other and other cementitious materials to form the final cement types.	Logistics Cement is transported in bags or as a bulk powder.

We hold ourselves responsible to the highest standards: Our own commitment to ESG

Adani is committed to increase its ESG footprint by realigning its businesses with emphasis on climate protection and increasing community outreach through its CSR programme based on the principles of sustainability, diversity and shared values.

It is an essential step towards the future and our goal of Nation Building. In alignment with these beliefs, we express our commitment to the Sustainable Development Goals (SDGs) set by the United Nations, focusing on areas in which we are uniquely positioned to create sustained and scalable impact.

We have been recognized for our impactful work towards creating a more sustainable future and creating higher benchmarks in India's cement sector.

We have developed carbon emissions reduction targets for 2030, which are validated by the Science Based. Targets initiative (SBTi), to limit global warming below 2 degree Celsius.

To reiterate our commitment to sustainability, we are maximizing efforts in clean energy like Waste Heat Recovery System to reduce clinker factor, energy efficiency (thermal & electrical), larger share of renewable energy and increasing usage of alternative fuels.

We have made significant progress in the responsible use of resources, be it natural or man-made. With higher proportion of blended cement, reduction in freshwater withdrawal, increased focus on water governance, sustainable livelihood & social inclusion for the community, we are committed to accelerating our growth in green products & solutions.





Some of our responsibilities extend beyond our people.

- **Focus on sustainable livelihood & social inclusion for the community**
- **1.2 Million people benefited through community development projects year to date**

The company also works closely with communities that live around its plants, through its CSR arms, the Ambuja Cement Foundation and ACC Trust.

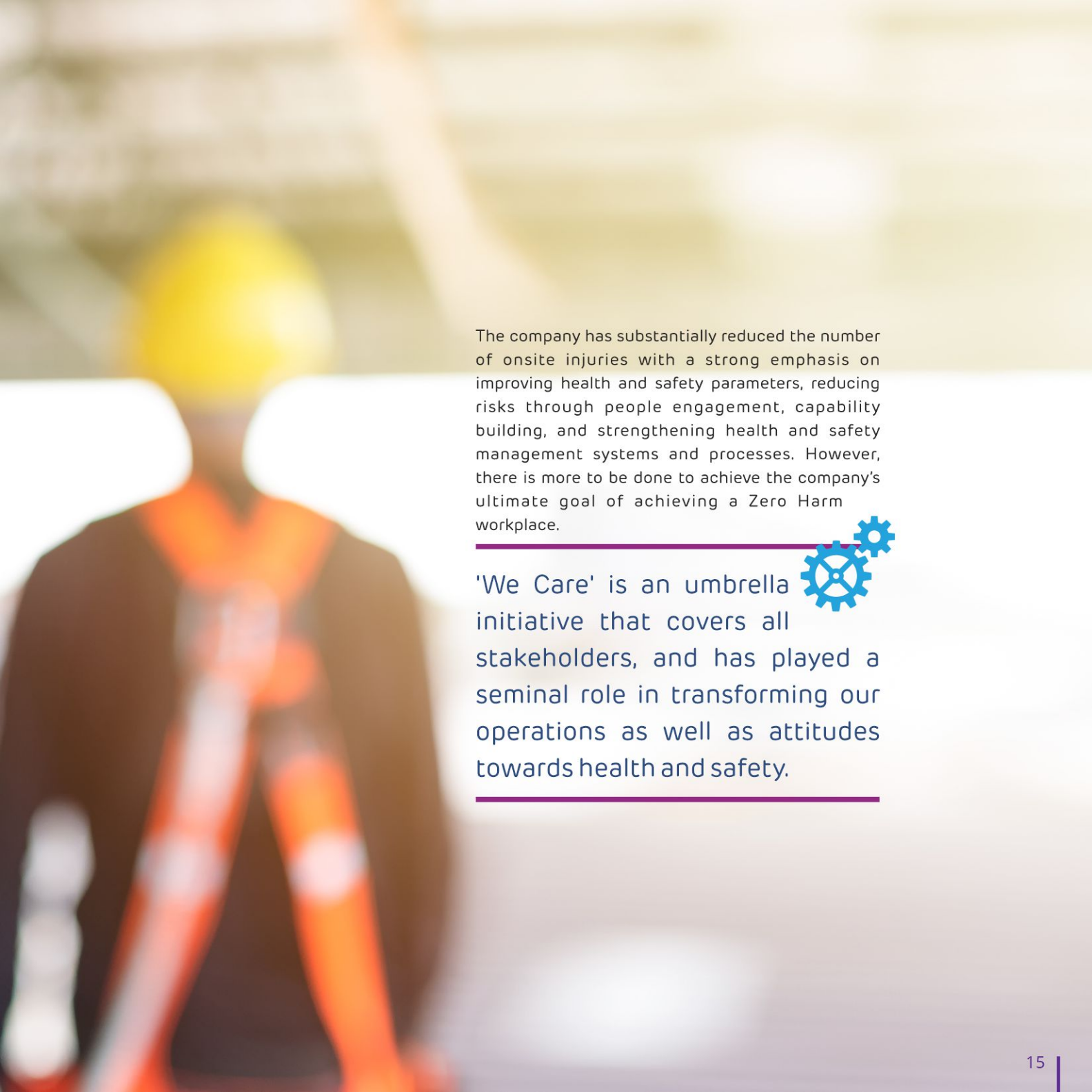
It implements need-based and participatory programmes in the thematic areas of water resource development, health and sanitation, women empowerment, rural infrastructure, education and agro-based/skill-based livelihood creation.






We mean no harm. Especially when it comes to Health and Safety.

Health and Safety is one of our's core value. For the company, people are its most important resource. The company is committed to ensure the safety of all employees, contractors, and others connected with our operations, through its Zero Harm policy.



The company has substantially reduced the number of onsite injuries with a strong emphasis on improving health and safety parameters, reducing risks through people engagement, capability building, and strengthening health and safety management systems and processes. However, there is more to be done to achieve the company's ultimate goal of achieving a Zero Harm workplace.

'We Care' is an umbrella  initiative that covers all stakeholders, and has played a seminal role in transforming our operations as well as attitudes towards health and safety.

You won't
encounter a
stronger brand.

Today, Ambuja Cement and ACC has become synonymous with strength and durability.

Our most towering structure is our pan-India presence.

With a strong footprint in the North, West, and East parts of India, and a presence in the South, Ambuja Cement and ACC covers key locations in each region. A wide network of dealers and retailers has taken Ambuja Cement and ACC to the remotest locations of the country. Whether it be a tiny village or a mega city, Ambuja and ACC are building towards a stronger nation.

Being an employee friendly workplace, Ambuja Cements and ACC has been voted 'Best Companies to Work For' in the Construction and Infrastructure sector.

Ambuja Cements and ACC Limited **rank amongst India's Most Sustainable Companies**

Ambuja Cements is now 8 times water positive and is also the first Cement Company to make it to the 'A' list in Global Water Stewardship by CDP for tackling water security.

ACC is recognised as Global leader in Climate and ranked in CDP 'A' list for taking the lead on environmental transparency and developing the low-carbon economy.



Ambuja Cements Limited
Adani Corporate House
Shantigram, S. G. Highway
Khodiyar, Ahmedabad – 382 421
Gujarat, India
Ph +91 79-2555 5555
www.adani.com

Ambuja Cements Limited
Elegant Business Park
MIDC Cross Road 'B', Off Andheri Kurla Road
Andheri (E), Mumbai-400 059
Maharashtra, India
Ph +91 22-4066 7000
www.ambujacement.com

ACC Limited
Cement House
121, Maharshi Karve Rd
Churchgate, Mumbai, 400020
Maharashtra, India
Ph +91 22-4159 3321
www.acc.com