

Ref: ACL/BYT/ENV/2024-2025/ 58

Date: 22.05.2024

To,
Regional Officer,
Integrated Regional office,
Ministry of Environment, Forest & Climate Change, Aranya Bhawan, North Block,
Sector-19, Naya Raipur, Atal Nagar, Chhattisgarh 492002.

Sub: Submission of Half Yearly Environment Clearance Compliance Report along with Environmental Monitoring Report for the period **October 2023 to March 2024** for Cement Plant Complex of Ambuja Cements Ltd (Unit-Bhatapara), Chhattisgarh.

Ref:

1. EC letter no. J-11011/289/2005-IA II (I) dated 6th January 2006.
2. EC letter no. J-11011/355/2005-IA II (I) dated 13th April 2007.
3. EC letter no. J-11011/539/2008-IA II (I) dated 23rd December 2008.
4. EC letter no. J-11011/72/2009-IA II (I) dated 15th May 2009.
5. EC letter no. J-11011/72/2009-IA II (I) dated 13th May 2011.
6. EC letter no. J-11011/355/2005-IA II (I) dated 25th Jan 2016.

Dear Sir,

Please find the enclosed herewith the six -monthly Environment Clearance compliance report along with Monthly Environmental Monitoring report from **October 2023 to March 2024**, for Cement Plant Complex of Ambuja Cements Ltd (Unit-Bhatapara), at Village & Post office-Rawan, Distt. Balodabazar, Chhattisgarh.

This is for your kind information and record.

Thanking you.

Yours Sincerely,

For Ambuja Cements Limited

(Unit: Bhatapara)


(Kaushal Kumar Mishra)
Chief Operation Manager



Encl.: Six Monthly Environment Clearance compliance report along with Environment Monitoring report.

Cc : 1. CPCB, Zonal Office, Vithal Market, Paryavaran Parisar , E-5 Arera Colony Bhopal (MP) -462016

2. The M.S., CECB, Paryavas Bhavan, North Block Sector-19, Atal Nagar (C.G.) 490099.

3. The RO, CECB, Commercial Complex, Chhattisgarh Housing Board Colony, Kabir Nagar Raipur (C.G.)

**ENVIRONMENT CLEARANCE HALF YEARLY COMPLIANCE REPORT FOR
THE PERIOD
(October 2023 - March 2024)**

OF



**M/S AMBUJA CEMENTS LTD.
(UNIT-BHATAPARA)**

**P.O.: RAWAN, DIST.: BALODA BAZAR - BHATAPARA
CHHATTISGARH - 493331**

1. EC Letter No.J-11011/289/2005-IA II (I) dated 6th January, 2006.
2. EC Letter No.J-11011/355/2005-IA II (I) dated 13thApril, 2007.
3. EC Letter No.J-11011/539/2008-IA II (I) dated 23rd December, 2008.
4. EC Letter No.J-11011/72/2009-IA II (I) dated 15thMay, 2009.
5. EC Letter No.J-11011/72/2009-IA-II (I) dated 13th May, 2011.
6. EC Letter No.J-11011/355/2005-IA II (I) dated 25th January,2016.

Compliance of the conditions stipulated in the environmental clearance accorded by MOEFCC for production enhancement from 1.2 MTPA TO 1.8 MTPA cement production.

Ref. No. J-11011/289/2005-IA II (I), Date: 6th January 2006

Sr. No.	EC Conditions	Compliance Status as on 22 May 2024
A. Specific Conditions		
i	<p>The gaseous and particulate matter emissions from various units should conform to the standards prescribed by the State Pollution Control Board. At no time the particulate emissions from the cement plant and captive power plant (CPP) shall exceed 50 mg/Nm³. Regular lime injection at Circulating Fluidized Bed Combustion (CFBC) boiler must be ensured to reduce SO₂ emissions. NOX burners should be installed to control NOX emissions. Continuous on-line monitors for particulate emissions will be installed. Interlocking facility should be provided in the pollution control equipment so that in the event of the pollution control equipment not working, the respective unit (s) is shut down automatically.</p>	<p>Complied.</p> <p>Cement Plant and Captive Power Plant are equipped with pollution control equipment (i.e. Bag filters, Glass Bag House & ESP) of adequate capacity to achieve Particulate Matter emission as per the new Notification dated 10th May, 2016. Regular lime injection at boiler to reduce SO₂ emissions as per the new Notification dated 10th May, 2016 at Captive TPP. Our APC are having adequate capacity and the particulate emissions from the cement plant and captive power plant (CPP) are maintained below 50 mg/Nm³. Interlocking facilities are also installed, in case of failure of APC the respective unit gets automatically shut off. CEMS (PM, SO₂ & NO_x) has been installed in cement plant and Power Plant and connectivity provided to CPCB portal, New Delhi and CECB Atal Nagar, Naya Raipur. Interlocking system is provided in pollution control equipment's. CEMS data of Cement Plant Line-I&II can be seen on URL- http://rtdms.cpcb.gov.in/industry-login and CEMS data of CPP can be seen on URL -http://rtdms.cpcb.gov.in/industry-login Photographs of Pollution control equipment's are shown in Annexure I. Cement plant stacks monitoring report enclosed as Annexure II</p>

ii.	<p>Ambient air quality including ambient noise levels must not exceed the Stipulated under EPA or by the State authorities. Monitoring of ambient air quality and stack emissions shall be carried out regularly in consultation with CECB and report submitted to the Board quarterly and to the Ministry's Regional Office at Bhopal half-yearly. Continuous stack monitoring system should be installed.</p>	<p>Complied</p> <p>Four (4) Continuous Ambient Air Quality Monitoring Stations (CAAQMS) have been installed in consultation with CECB and result can be seen on URL- https://cecb.glensserver.com/#/login : login AMBUJA Password: Ambuja@789. CEMS (PM, SO₂ & NO_x) has been installed in cement plant and Power Plant and connectivity provided to CPCB portal, New Delhi and CECB Atal Nagar, Naya Raipur.</p> <p>CEMS has been installed in all the stacks (Nos.) and its connectivity given to CPCB and CECB in single URL https://cecb.glensserver.com/#/publicPortal/categoryList.</p> <p>Six monthly compliances submitted to MoEF&CC, Raipur office regularly. Manual ambient air quality monitoring as per CPCB is being done in the core and buffer zone. Monitoring data is submitted quarterly to CECB and six monthly to MoEF&CC RO office, Raipur. Manual AAQM & Noise monitoring reports enclosed as Annexure II</p> <p>The 3rd party monitoring is undertaken through QCI-NABET MoEF&CC approved laboratory.</p>
iii.	<p>The company shall install adequate dust collection and extraction systems to control fugitive dust emissions at various transfer points. Glass bag house in raw mill and kiln, ESP in cooler and cement mill and bag filter at all the transfer points shall be installed. Coal and clinker storage will be in the form of stockpiles. The dust collected from the pollution control equipment shall be recycled back into the process. Storage of raw material shall be in closed roof sheds. Water sprinkling arrangement shall be made in the raw material stock yard and cement bag loading areas.</p>	<p>Complied</p> <p>Dust collection and extraction system are installed at various transfer points to control fugitive dust.</p> <p>Glass bag house in raw mill and kiln, ESP in cooler & cement mills are installed. Bag filters at all the transfer points are installed. Coal and clinker storage are in the form of stockpile under covered shed. The dust collected from the pollution control equipment is recycled into the process. Storage of raw material is in closed roof sheds. It is intimated that Covered shed for fly ash and coal (Nos 1) and Limestone stockpile shed for Line 1&2 (Nos 2) has been installed. The latest photographs are attached as Annexure XI. Regular water sprinkling at various location is being done in the raw material stock yard and loading area. Mobile water sprinkling system has been deployed to control the fugitive dust emissions. Fugitive dust monitoring undertaken through QCI-NABET MoEF&CC approved laboratory is enclosed as Annexure-II</p>

iv.	All the recommendations of the Corporate Responsibility for Environmental Protection (CREP) shall be followed and existing ESP in cement mill I and II and bag filters in raw mill and kiln, and crusher area shall be modified to achieve 99.95% efficiency and particulate emission levels less than 50 mg/Nm ³ .	Complied. CREP guidelines are being followed. Cement Plant and Captive Power Plant are well equipped with dust extraction system (Bag filters, Glass Bag House & ESP) of adequate capacity to achieve particulate matter emission as per the new Notification dated 10 th May, 2016. Air pollution control systems are upgraded to achieve 99.95 % efficiency and particulate emissions are maintained below 30 mg/Nm ³ . CEMS data of Cement Plant Line-I&II can be seen on URL- http://rtdms.cpcb.gov.in/industry-login and CEMS data of CPP can be seen on URL - http://rtdms.cpcb.gov.in/industry-login Photographs of control equipment's are shown in Annexure I . Cement and CPP manual stacks Monitoring results for the period of October 2023 to March 2024 are given in Annexure-II
v.	No effluent shall be discharged from the process outside the premises and all the treated effluent from CPP and STP shall be utilized for green belt development and other plant related activities.	Complied. In cement plant there is no question of process effluents as the cement manufacturing process adopted is a dry. Cooling tower COC is maintained 8-9 cycles, and discharged TDS is around 900-1100 mg/lit and this water is used for dust suppression. We have adapted Zero liquid Discharge is maintained all the time, No process effluent are discharged outside the plant premises. No effluent is generated from cement plant. Treated effluent from CPP and treated Wastewater from STP is further used for other plant activities, including dust suppression & green belt development within the plant area.
vi.	The company must harvest the rainwater from the roof tops and storm water drains to recharge the ground water. The company must also collect rainwater in the minedout pits of captive limestone mine and use the same water for the various activities of the project to conserve fresh water.	Complied. We are collecting the rainwater in two Mine Pits and one pit at Bhadrapali for rainwater recharge. Most of the plant process water requirement met with Mine pit water. Further we have created Roof Rainwater harvesting structure (Nos7) in August 2022.
vii.	Green belt shall be developed in 33% of the plant area. Central Pollution Control Board guidelines must be followed in planning and developing green belt and selection of species etc.	Complied. We have developed more than 33% green belt is developed within the plant premises. Total plant area as per EC 238.97 Green belt area 83.032 Hectare, no of existing plants 202598 Photographs of Plantation & Certificate shown in Annexure III .
viii.	Solid waste generated in the form of fly ash and slag shall be 100% recycled in the process itself.	Complied. Fly ash generated from CPP is 100% utilized in cement manufacturing (PPC and Composite cement) as per BIS standard. Whereas flyash and blast furnace slag (bought from outside) from other industries are also being used for making cement. Thus, solid waste generated within the plant is utilized 100 %.

ix.	The company shall undertake eco-development measures including community welfare measures in the project area.	Complied. Ambuja Cement Foundation (ACF) is taking care of implementation of all CSR activities regularly as per rules. These activities are regularly undertaken in consultation with community and local administration and implemented within study area. CSR funds are utilized for Community welfare activities Ref. Annexure IV for details of activities and budget.
B. General Conditions		
i.	The project authority must adhere to the stipulations made by Chhattisgarh Environment Conservation Board (CECB) and State Government.	During operation phase the project authorities are complying all the conditions of EC and CTO issued by CECB i.e. Chhattisgarh Environment Conservation Board (CECB) and State Government. Hence Complied.
ii.	No further expansion or modification of the plant should be carried out without prior approval of this ministry.	Prior EC will be obtained in case of change/enhancement in production capacity.
iii.	At least four ambient air quality monitoring stations should be established in the downward direction as well as where maximum ground level concentration of SPM, SO ₂ and NO _x are anticipated in consultation with the CECB. Data on ambient air quality and stack emissions should be regularly submitted to this Ministry including its Regional Office at Bhopal and CECB /CPCB once in six months.	Complied In order to monitor SPM, SO ₂ , NO _x four (4) Continuous Ambient Air Quality Monitoring Stations (CAAQMS) have been installed in consultation with CECB and the monitored data is automatically transmitted regularly on the portal CECB as well as CPCB URL- https://cecb.glensserver.com/#/login : login AMBUJA Password: Ambuja@789. Six monthly reports are filed to RO MOEFCC office, Raipur as desired. Manual ambient air quality monitoring as per CPCB is being done in the core and buffer zone through MoEF&CC approved, NABL accredited lab as a part of compliance of EC and CTO attached as Annexure II .
iv.	Industrial wastewater should be properly collected, treated so as to conform to the standards prescribed under GSR 422 (E) dated 19th May, 1993 and 31st December, 1993 or as amended from time to time. The treated wastewater should be utilized for plantation purpose.	Complied. Industrial wastewater is properly collected, treated as per the CTO discharge standards. The treated wastewater is used for the purpose of dust suppression within the plant area and also recycled in TPP process. Latest Monitoring results of water quality enclosed as Annexure II
v.	The overall noise levels in and around the plant area should be kept well within the standards (85 dBA) by providing noise control measures including acoustic hoods, silencers, enclosures etc. on all sources of noise generation. The ambient noise levels should conform to the standards prescribed under Environmental (Protection) Act, 1986 Rules, 1989 viz. 75 dBA(daytime) and 70 dBA (nighttime).	Complied. Noise control measures including acoustic hoods, silencers, enclosures etc. are provided at various noise generating sources within Power and cement plant. The ambient noise levels are maintained below 85 dBA in the plant area, and ambient levels are maintained 75 dBA (daytime) and 70 dBA (night-time). Noise monitoring carried out in core and buffer zone, report is enclosed as Annexure II .

vi.	Proper housekeeping and adequate occupational health programmes must be taken up. Occupational Health Surveillance programme should be done on a regular basis and records maintained. The programme must include lung function and sputum analysis tests once in six months.	Complied. Regular housekeeping is being carried out regularly. Occupational health and safety awareness program and mock drills are conducted regularly in order to sensitize workers. Pre-employment and periodic medical check-up of each employee is being performed, which includes lung function test and sputum analysis tests once in six months. Records are maintained at Occupational Health Centre (OHC) which is serviced by permanent doctors and health staff. EC six monthly returns are filed covering above data.
vii.	The project proponent shall also comply with all the environmental protection measures and safeguards recommended in the Environmental Impact Assessment/Environmental Management Plan.	Noted and Agreed. Environmental protection measures suggested in the EIA/EMP report are duly implemented in the plant on regularly basis.
viii.	A separate environmental management cell with full-fledged laboratory facilities to carry out various management and monitoring functions should be set up under the control of Senior Executive.	Complied Environmental Management Cell has been established under supervision of Environmental Head with laboratory facilities. Environmental monitoring is being carried out through MoEF&CC & NABL accredited laboratories. Head of Environment is directly reporting to the Unit Head. The hierarchy chart and function of EMD is mentioned in the attached Annexure – IX
ix.	The project authorities will provide adequate funds both recurring and non-recurring to implement the conditions stipulated by the Ministry of Environment and Forests as well as the State Government along with the implementation schedule for all the conditions stipulated herein. The funds so provided should not be diverted for any other purposes.	Agreed and being complied. State of the art environmental protection measures have been implemented in the plant facilities. Necessary funds are allocated for implementation and maintenance of the environmental protection measures to control pollution within permissible limits. Details of fund utilized in different heads are depicted in Annexure-V
x.	The Regional Office of this Ministry at Bhopal / CPCB / CECB will monitor the stipulated conditions. A six-monthly compliance report and the monitored data along with statistical interpretation should be submitted to them regularly.	Complied. As per EC and CTO as a part of compliance point wise compliances are filed regularly as per the frequency mentioned. Environment monitoring data is interpreted by MoEF&CC/NABET accredited experts and included in returns. Regular six-monthly compliance report and monitoring data is submitted to MoEF&CC, CECB & CPCB.
xi.	The Project Authorities should inform the Regional Office as well as the Ministry, the date of financial closure and final approval of the project by the concerned authorities and the date of commencing the land development work.	Noted and complied. These issues are covered in subsequent six-monthly reports.

xii.	The Project Proponent should inform the public that the project has been accorded environmental clearance by the Ministry and copies of the clearance letter are available with the CECB / Committee and may also be seen at Website of the Ministry of Environment and Forests at http://envfor.nic.in . This should be advertised within seven days from the date of issue of the clearance letter at least in two local newspapers that are widely circulated in the region of which one shall be in the vernacular language of the locality concerned and a copy of the same should be forwarded to the Regional office.	Complied. Advertisement for obtaining EC for change in capacity is filed in subsequent Six- monthly returns.
3.	The Ministry or any competent, authority may stipulate any further condition(s) on receiving reports from the project authorities. The above conditions will be monitored by the Regional Office of this Ministry located at Bhopal.	Noted
4.	The Ministry may revoke or suspend the clearance if implementation of any of the above mentioned conditions is not satisfactory.	Noted
5.	Any other conditions or alteration in the above conditions will have to be implemented by the project authorities in a time bound manner.	Noted
6.	The above conditions will be enforced, inter-alia under the provisions of the Water (Prevention and Control of Pollution) Act, 1974 the Air (Prevention and Control of Pollution) Act, 1981 the Environment (Protection) Act, 1986 and the Public Liability Insurance Act, 1991 along with their amendments and rules.	Noted

Compliance of the conditions stipulated in the environmental clearance given by ministry of environment and forests for 2.72 MTPA new clinker production unit (2.72MTPA) along with thermal power plant (15 MW) and captive power plant(33 MW).Ref. No. J-11011/355/2005-ia ii (i), date: 02th September April 2007.

Sr. No.	EC Conditions	Compliance Status as on 22 May 2024
A. Specific Conditions		
i.	<p>The gaseous and particulate matter emission from various units shall conform to the standards prescribed by the Chhattisgarh Environment Conservation Board (CECB). At no time, the particulate emission from the cement plant shall exceed 50 mg/Nm³. The emission from CPP shall be less than 100 mg/Nm³. Continuous online stack monitoring facilities for all the stacks and adequate air pollution control system shall be provided to keep emission levels below 50 mg/Nm³ and on-line data shall be submitted to the CECB and CPCB regularly. Interlocking facility shall be provided in the pollution control equipment so that in the event of the pollution control equipment not working, the respective unit(s) is shut down automatically.</p>	<p>Complied. Cement Plant and Captive Power Plant are equipped with pollution control equipment (i.e. Bag filters, Glass Bag House & ESP) of adequate capacity to achieve Particulate Matter emission as per the new Notification dated 10th May, 2016. Our APC are having adequate capacity and the particulate emissions from the cement plant and captive power plant (CPP) are maintained below 50 mg/Nm³ and 100 mg/Nm³ respectively. Interlocking facilities are also installed, in case of failure of APCE the respective unit gets automatically shut off. CEMS (PM, SO₂ & NO_x) has been installed in cement plant and Power Plant and connectivity provided to CPCB portal, New Delhi and CECB office all online environmental data has been given in single URL. Atal Nagar, Naya Raipur. Interlocking system is provided in pollution control equipment's. CEMS data of Cement Plant Line-I&II can be seen on URL- http://rtdms.cpcb.gov.in/industry-login and CEMS data of CPP can be seen on URL -http://rtdms.cpcb.gov.in/industry-login Photographs of Pollution control equipment's are shown in Annexure I. Cement plant stacks monitoring report enclosed as Annexure II</p>

ii.	Ambient air quality including ambient noise levels shall not exceed the standards stipulated under EPA or by the State authorities Monitoring of ambient air quality and stack emissions shall be carried out regularly in consultation with CECB and report submitted to CECB quarterly and to the Ministry's Regional Office at Bhopal half-yearly. One ambient air quality monitoring station shall be installed in downwind direction.	<p>Complied</p> <p>Four (4) Continuous Ambient Air Quality Monitoring Stations (CAAQMS) have been installed in consultation with CECB and result can be seen on URL- URL- https://cecb.glensserver.com/#/login : login AMBUJA Password: Ambuja@789. CEMS (PM, SO₂ &NO_x) has been installed in cement plant and Power Plant and connectivity provided to CPCB portal, New Delhi and CECB Atal Nagar, Naya Raipur.</p> <p>CEMS has been installed in all the major stacks and its connectivity given to CPCB and CECB portal.</p> <p>Six monthly compliances submitted to MoEF&CC, Raipur office regularly. Manual ambient air quality monitoring as per CPCB is being done in the core and buffer zone. Monitoring data is submitted quarterly to CECB and six monthly to MoEF&CC RO office, Raipur. Manual AAQM & Noise monitoring reports enclosed as Annexure IIThe 3rd party monitoring is undertaken through QCI-NABET MoEF&CC approved laboratory.</p>
iii.	The company shall install adequate dust collection and extraction system to Control fugitive dust emissions at various transfer points, raw mill handling (unloading, conveying, transporting, stacking), vehicular movement bagging and packing areas etc. ESP to AFBC boilers, clinker cooler and glass bag house to the raw mill/kiln system shall be provided to control air emission less than 50 mg/Nm ³ from all the sources except CPP where 100 mg/Nm ³ norms shall be achieved. Bag filters shall be provided to crushing plant, raw mill hopper, blending silo/kiln feed clinker storage, coal mill system, transfer points and vesting of auxiliaries. The dust collected from the pollution control equipment's shall be recycled back in to the process. Storage of raw material shall be in closed roof shed.	<p>Complied</p> <p>Dust collection and extraction system are installed at various transfer points to control fugitive dust.</p> <p>Glass bag house in raw mill and kiln, ESP in cooler & cement mills are installed. Bag filters at all the transfer points are installed. Coal and clinker storage are in the form of stockpile under covered shed. The dust collected from the pollution control equipment is recycled into the process. Storage of raw material is in closed roof sheds.</p> <p>Regular water sprinkling at various is being done in the raw material stock yard and loading area. For fugitive dust control mobile water sprinkling system has been deputed. Fugitive dust monitoring undertaken through QCI-NABET MoEF&CC approved laboratory is enclosed as Annexure-II</p>
iv.	Asphalting/concreting of roads and water spray all around the coal stockpiles shall be carried out to control fugitive emissions.	<p>Complied</p> <p>For controlling fugitive emission all roads are concreted inside the plant premises and Regular water sprinkling at various locations is being done around the raw material storage facilities. Also, ample greenery development has been undertaken.</p>

v.	Secondary fugitive emissions should be controlled and shall be within the prescribed limits and regularly monitored. Guidelines / Code of Practice issued by the CPCB in this regard shall be followed.	Complied Cement Plant and Captive Power Plant are well equipped with dust extraction system. Fugitive dust monitoring undertaken through QCI-NABET MoEF&CC approved laboratory is enclosed as Annexure-II
vi.	Total water requirement shall be met from the mine pits only and no surface/ground water shall be used. No process wastewater shall be discharged due to use of all the treated wastewater for ash conditioning, dust suppression, green belt development and other plant related activities etc. No effluent shall be discharged outside the factory premises and 'zero' discharge shall be adopted. Domestic effluent shall be used after treated in Sewage Treatment Plant (STP) for green belt development within the plant and colony area.	Complied. It is intimated that due to delayed delivery by vendor and not fulfilling the delivery commitment on time we have cancelled the Purchase order and again issued to another vendor. We assured that this WTP project will be completed by end of October 2024 and total water requirements shall be met from mine pits only.
vii.	The entire water requirement shall be met from the artificial reservoir made in mine pit only and no water from surface and ground water sources shall be used for any purpose.	Complied. It is intimated that due to delayed delivery by vendor and not fulfilling the delivery commitment on time we have cancelled the Purchase order and again issued to another vendor. We assured that this WTP project will be completed by end of October 2024 and total water requirements shall be met from mine pits only.
viii.	The company must harvest the rainwater from the roof tops and storm water drains to recharge the ground water. The company must also collect rainwater in the mined out pits and use the same water for the various activities of the project to conserve fresh water.	Complied. We are collecting the rainwater in two Mine Pits and one pit at Bhadrupali for rainwater recharge. Most of the plant process water requirement met with Mine pit water. Further we have created Roof Rainwater harvesting structure (Nos7) in August 2022.
ix.	As proposed in EIA/EMP, out of total 238.97 ha. Green belt shall be developed in 75 ha. (30%) in consultation with the local DFO as per the CPCB guidelines.	Complied. We have developed more than 33% green belt is developed within the plant premises. Total plant area as per EC 238.97. Green belt area 83.55. Hec, no of existing plants 202598 Photographs of Plantation & Application for green belt certification to Local DFO Submitted as shown in Annexure III .
x.	All the cement dust collected from pollution control devices shall be recycled and reutilized in the process. The entire fly ash generated from the power plant shall be pneumatically conveyed to the cement plant and used for manufacturing of Pozzolana Portland Cement (PPC) Boiler ash shall be used for land filling Sludge from the sewage treatment plant shall be used as manure Hazardous waste viz. Spent oil from gear boxes and automatic batteries etc. shall be properly stored in a designated area and sold to authorized recyclers / re-processors.	Complied. All the dust collected from pollution control equipment's is reused in processes. Fly ash generated from the CPP power plant is handled pneumatically and 100% utilized in cement manufacturing (PPC and Composite cement) as per BIS standard. Sludge generated from the sewage treatment plant (STP) is used as manure for greenbelt development. Hazardous waste (Used Oil, Waste Oil etc.) and batteries are properly stored in confined area and sold to authorize recycler only.

xi.	Efforts shall be made to make use of high calorific hazardous waste as fuel in kiln. Accordingly, provision shall be made in the kiln and inform to the Ministry.	Complied. High calorific hazardous waste is used as alternative fuel in kiln.
xii.	The company shall undertake eco-development measures including community welfare measures in the project area.	Complied. Ambuja Cement Foundation (ACF) is taking care of implementation of all CSR activities regularly as per rules. These activities are regularly undertaken in consultation with community and local administration and implemented within study area. CSR funds are utilized for Community welfare activities Ref. Annexure IV for details of activities and budget.
xiii.	All the recommendations of the CREP guidelines shall be strictly followed.	Noted and complied
B. General Conditions		
i.	The project authorities must strictly adhere to the stipulations made by the Chhattisgarh Environment Conservation Board (CECB) and the State Government.	During operation phase the project authorities are complying all the conditions of EC and CTO issued by CECB i.e. Chhattisgarh Environment Conservation Board (CECB) and State Government. Hence Complied.
ii..	No further expansion or modifications in the plant should be carried out without prior approval of the Ministry of Environment and Forests.	Noted Prior EC will be obtained in case of change/enhancement in production capacity.
iii.	At least four ambient air quality-monitoring stations should be established in the downward direction as well as where maximum ground level concentration of SPM, SO ₂ and NO _x are anticipated in consultation with the CECB Data on ambient air quality and stack emission should be regularly submitted to this Ministry including its Regional Office at Bhopal and the CECB/CPCB once in six months.	Complied In order to monitor SPM, SO ₂ , NO _x four (4) Continuous Ambient Air Quality Monitoring Stations (CAAQMS) have been installed in consultation with CECB and the monitored data is automatically transmitted regularly on the portal CECB as well as CPCB URL- https://cecb.glensserver.com/#/login : login AMBUJA Password: Ambuja@789. Six monthly reports are filed to RO MOEF office, Raipur as desired. Manual ambient air quality monitoring as per CPCB is being done in the core and buffer zone thru MoEF&CC approved, NABL accredited lab as a part of compliance of EC and CTO. The test records are attached as Annexure II
iv.	Industrial wastewater shall be properly collected, treated so as to conform to the standards prescribed under GSR 422 (E) dated 19th May 1993 and 31st December 1993 or as amended from time to time. The treated wastewater shall be utilized for plantation purpose.	Complied. Industrial wastewater is properly collected, treated as per the CTO discharge standards. The treated wastewater is used for the purpose of dust suppression within the plant area and also recycled in TPP process. Latest Monitoring results of water quality enclosed as Annexure II.

v.	The overall noise level in and around the plant area shall be kept well within the standards (85dBA) by providing noise control measures including acoustic hoods silencers enclosures etc. on all sources of noise generation. The ambient noise levels should conform to the standards prescribed under EPA Rules. 1989 viz., 75 dBA(daytime) and 70 dBA (nighttime).	Complied. Noise control measures including acoustic hoods, silencers, enclosures etc. are provided at various noise generating sources within Power and cement plant. The ambient noise levels are maintained below 85 dBA in the plant area, and ambient levels are maintained 75 dBA (day- time) and 70 dBA (night-time).Noise monitoring carried out in core and buffer zone, report is enclosed as Annexure II .
vi.	The project proponent shall also comply with all the environmental protection measures and safeguards recommended in the EIA / EMP report. Further the company must undertake socio-economic development activities in the surrounding villages like community development programmes, educational programmes, drinking water supply and health care etc.	Noted and Agreed Environmental protection measures suggested in the EIA/EMP report are duly implemented in the plant on regularly basis. Various socio-economic development programs are being implemented in surrounding community through Ambuja Cement Foundation (ACF) as per rule. These activities are regularly undertaken in consultation with community and local administration and implemented within study area. CSR funds are utilized for Community welfare activities Ref. Annexure IV for details of activities and budget.
vii.	The project authorities shall provide Rs. 40.00 Crores and Rs. 5.00 Crores/annum towards capital and recurring cost/annum for environmental protection measures to implement the conditions stipulated by the Ministry of Environment and Forests as well as the State Government and an implementation schedule for implementing all the conditions stipulated herein shall be submitted to the Regional Office of this Ministry at Bhopal. The funds so provided shall not be diverted for any other purpose.	Agreed and being complied. State of the art environmental protection measures have been implemented in the plant facilities. Annual funds are allocated for implementation and maintenance of the environmental protection measures to control pollution within permissible limits. Details of fund utilized in different heads are depicted in Annexure-V
viii.	The Regional Office of this ministry at Bhopal / CPCB / CECB will monitor the stipulated conditions. A six - monthly compliance report and the monitored data along with statistical interpretation shall be submitted to them regularly.	Complied. As per EC and CTO as a part of compliance point wise compliances are filed regularly as per the frequency mentioned. Environment monitoring data is interpreted by MoEF&CC/NABET accredited experts and included in returns. Regular six-monthly compliance report and monitoring data is submitted to MoEF&CC, CECB & CPCB. Last EC compliance report was submitted by mail Copy is enclosed Annexure-VI .

ix.	The project proponent shall inform the public that the project has been accorded environmental clearance by the Ministry and copies of the clearance letter are available with the CECB/Committee and may also be seen at Website of the Ministry of Environment and Forests at http://envfor.nic.in . This shall be advertised within seven day from the date of issue of the clearance letter, at least in two local newspapers that are widely circulated in the region of which one shall be in the vernacular language of the locality concerned and a copy of the same should be forwarded to the Regional office at Bhopal.	Complied. Advertisement for obtaining EC for change in capacity is filed in subsequent six- monthly returns. Copy of information to the public is enclosed as Annexure-VII.
x.	Project authorities shall inform the Regional Office as well as the Ministry, the date of financial closure and final approval of the project by the concerned authorities and the date of commencing the land development work.	Noted and Complied These details are covered in subsequent six-monthly reports. <ul style="list-style-type: none"> • Environmental Clearance date:13.04.2007 • Financial closures is on 31st December, 2007
3.	The Ministry may revoke or suspend the clearance, if implementation of any of the above conditions is not satisfactory.	Noted
4.	The Ministry reserves the right to stipulate additional conditions if found necessary. The Company in a time bound manner will implement these conditions.	Noted
5.	The above conditions will be enforced, inter-alia under the provisions of the Water (Prevention & Control of Pollution) Act, 1974. the Air (Prevention & Control of Pollution) Act,1981, the Environment (Protection) Act, 1986. Hazardous Wastes (Management and Handling) Rules, 2003 and the Public (insurance) Liability Act, 1991 along with their amendments and rules.	Noted

Compliance of the conditions stipulated in the environmental clearance given by ministry of environment and forests for the expansion project from 1.8 MTPA to 2.4 MTPA cement production, Ref. No. J-11011/539/2008-IA II (I), Date: 23rd December 2008

Sr. No.	EC Conditions	Compliance Status as on 22 May 2024
A. Specific Conditions		
i.	Continuous stack monitoring facilities to monitor gaseous emissions from all the stacks shall be provided. After expansion, limit of SPM shall be controlled within 50mg/Nm ³ by installing adequate air pollution control system viz. glass bag house to kiln mill, bag filters to coal mill etc. As proposed, existing electrostatic precipitators (ESPs) provided to kiln/ shall be replaced by glass bag house. Data on ambient air, fugitive and stack emissions shall be submitted to the Ministry's Regional Office at Bhopal, CECB and CPCB regularly. Efforts shall also be made to reduce SO ₂ and NO _x emissions. Stack emission monitoring reports shall be submitted to the Ministry's Regional Office at Bhopal, CECB and CPCB regularly.	<p>Complied</p> <p>Cement Plant and Captive Power Plant are equipped with pollution control equipment (i.e. Bag filters, Glass Bag House & ESP) of adequate capacity to achieve Particulate Matter emission as per the new Notification dated 10th May, 2016. Regular lime injection at boiler to reduce SO₂ emissions as per the new Notification dated 10th May 2016 at Captive TPP. ESP is installed at AFBC boiler whereas Glass Bag House is installed at Raw Mill & Kiln exit to control air emission below 50 mg/Nm³ at CPP.</p> <p>Our APC are having adequate capacity and the particulate emissions from the cement plant and captive power plant (CPP) are maintained below 50 mg/Nm³. Interlocking facilities are also installed, in case of failure of APC the respective unit gets automatically shut off.</p> <p>CEMS (for PM, SO₂&NO_x) have been installed in cement plant and Power Plant and connectivity provided to CPCB portal, New Delhi and CECB Atal Nagar, Naya Raipur. Interlocking system is provided in pollution control equipment's. CEMS data of Cement Plant Line-I&II can be seen on URL- http://rtdms.cpcb.gov.in/industry-login and Id- environment.bhatapara-ind@adani.com</p> <p>CEMS data of CPP can be seen on URL -http://rtdms.cpcb.gov.in/industry-login Id- environment.tppbhatapara-ind@adani.com</p> <p>(Photographs of control equipment's are shown in Annexure I.)</p> <p>Latest Cement and CPP manual stacks Monitoring results for the given in Annexure II</p>
ii.	Secondary fugitive emissions shall be controlled and should be within the prescribed limits and regularly monitored. Guidelines / Code of Practice issued by the CPCB in this regard shall be followed.	<p>Complied</p> <p>Cement Plant and Captive Power Plant are well equipped with dust extraction system. Fugitive dust monitoring undertaken through QCI-NABET MoEF&CC approved laboratory is enclosed as Annexure-II.</p>

iii.	Efforts shall be made to reduce impact of the transport of the raw materials and end products on the surrounding environment including agricultural land. All the raw materials, including fly ash shall be transported in the closed containers only and shall not be overloaded. Vehicular emissions shall be regularly monitored.	<p>Complied.</p> <p>Raw material and end products transport is being carried out in tarpaulin covered trucks. Fly ash is transported in closed bulkers. Transport roads are regularly sprinkled with water and are periodically maintained. Overloading is strictly prohibited. Air quality monitoring is carried out in nearby villages to ensure efficacy of air pollution control measures adopted in the plant.</p> <p>Photographs of material transport shown in Annexure – VIII</p>
iv.	The company shall install adequate dust collection and extraction system to control fugitive dust emissions from different sources viz. raw material storage yards, loading and unloading operations, transfer points, crusher, coal mill and packing plant. Bag filters and water sprinkling arrangements shall be made in raw material stock yards and cement bag loading areas etc. Covered sheds for storage of raw materials and fully covered conveyers for transportation of materials shall be provided. Cement and fly ash shall be stored in silos. Dust suppression system shall be provided at transfer points and coal/lignite handling area to control fugitive emissions. Automatic dust cleaning system for removing dust from floors, concrete/tar topped roads inside the plant to avoid dispersion of dust and good housekeeping shall be adopted to control fugitive emissions.	<p>Complied</p> <ol style="list-style-type: none"> 1. Plant cleaning in Mill section and other area has been done and same will be maintained. The bag of bag filter has been replaced costing more than 3.0 Crore. 2. Leakage has been arrested by Maintenance team regularly. All bag filter inspection done on periodically basis 3. Clinker silo sheeting work completed. 4. The material lying in the open has been covered with tarpaulin. 5. Road sweeping machine has been deployed for road cleaning regularly. 6. Water tankers have been deployed regularly. 7. Two new sweeping machines procured at a cost of Rs 70 Lakh for road cleaning and control of Fugitive emissions in the plant. 8. Two Mobile dust suppression systems already procured & same is in operation in coal yard, limestone piling area and other areas for fugitive dust control. 9. Line 1 Raw mill Bag house Filter maintenance done and all the new bags installed. 10. Repair and cleaning of roads done for proper movement of sweeping machines. 11. The fly ash generated from Captive Power Plant is being fully utilized for manufacturing of Cement. 12. We have done various good practices like walk by inspections on routine basis resulting our Housekeeping has been improved.

v.	Asphalting/concreting of roads and water spray ail around the stockyard and loading/ unloading areas in the cement plant shall be carried out to control fugitive emissions. Regular water sprinkling shall be carried out in critical areas prone to air pollution and having high levels of SPM and RPM such as haul road, loading and unloading points, transfer points and other vulnerable areas. It shall be ensured that the ambient air quality parameters conform to the norms prescribed by the Central Pollution Control Board in this regard.	<p>Complied.</p> <p>For controlling fugitive emission, the roads are black topped/concreted inside the plant premises and Regular water sprinkling at is being done in the raw material stock yard and loading area. Mobile water sprinkling system has been deputed to strengthen the existing dust suppressions systems. Fugitive dust monitoring undertaken through QCI-NABET MoEF&CC approved laboratory is enclosed as Annexure-II</p>
vi.	Ambient air quality including ambient noise levels shall be monitored at different locations including fence of the sanctuary and must not exceed the standards stipulated under EPA or by the State authorities. Monitoring of ambient air quality, fugitive and stack emissions shall be carried out regularly in consultation with CECB and reports submitted to the to the Ministry's Regional Office at Bhopal, CECB and CPCB regularly.	<p>Complied</p> <p>Four (4) Continuous Ambient Air Quality Monitoring Stations (CAAQMS) have been installed in consultation with CECB and result can be seen on URL-http https://cecb.glensserver.com/#/login : login AMBUJA Password: Ambuja@789. CEMS (PM, SO₂ & NO_x) has been installed in cement plant and Power Plant and connectivity provided to CPCB portal, New Delhi and CECB Atal Nagar, Naya Raipur. CEMS has been installed in all the major stacks and its connectivity given to CPCB and CECB portal. Six - monthly compliances submitted to MoEF&CC, Raipur office regularly. Manual ambient air quality monitoring as per CPCB is being done in the core and buffer zone. Monitoring data is submitted quarterly to CECB and six monthly to MoEF&CC RO office, Raipur. Manual AAQM & Noise monitoring reports enclosed as Annexure II The 3rd party monitoring is undertaken through QCI-NABET MoEF&CC approved laboratory.</p>
vii.	As proposed, total water requirement for cement plant (50m ³ /day) shall be met from mine pit only and no surface or ground water shall be used. No liquid effluent shall be generated from the cement plant. All the other treated wastewater shall be recycled and reused in the process for cooling and/or for ash quenching, dust suppression, green belt development and other plant related activities etc. No process wastewater shall be discharged outside the factory premises and 'zero' discharge shall be adopted. All the sewage water shall be treated in Sewage Water Reclamation Plant (SWRP) and treated wastewater shall be used for green belt development.	<p>Complied</p> <p>It is intimated that due to delayed delivery by vendor and not fulfilling the delivery commitment on time we have cancelled the Purchase order and again issued to another vendor. We assured that this WTP project will be completed by end of October 2024 and total water requirements shall be met from mine pits only.</p>

viii.	Sewage Water Reclamation Plant (SWRP) shall be used for the treatment of sewage from the colony and treated domestic effluent shall be used for green belt development within the plant premises. Domestic waste from colony and SWRP shall be segregated into biodegradable and non-biodegradable. Biodegradable waste shall be composted, and non-biodegradable waste should be land filled at identified sites. Effluent treatment plant (ETP) shall also be provided for workshop.	<p>Complied</p> <p>No effluent is discharged from the process outside the premises. Treated effluent from Sewage Water Reclamation Plant (SWRP) / STP is used for green belt development. Treated effluent from CPP is used in process and dust suppression and recycled in the CPP process through RO.</p> <p>Biodegradable domestic waste from the colony is used for composting and green belt development.</p>
ix.	All the bag filter dust, raw meal dust, coal dust, clinker dust and cement dust from pollution control devices shall be recycled and reused in the process and used for cement manufacturing. Spent oil and batteries shall be sold to authorized recyclers / re-processors only. All the solid waste generated from colony and Sewage Water Reclamation Plant (SWRP) shall be disposed after segregating the waste into biodegradable and non-degradable. Treated SWRP sludge shall be used as manure for green belt development. The waste oil and scrapped automobile batteries etc. shall be properly disposed off as per the Hazardous Waste (Management & Handling) Rules, 1989 and subsequent amendments and shall be sold to authorized recyclers / re-processors only.	<p>Complied</p> <p>All the dust collected from pollution control equipment's is reused in processes. Fly ash generated from the CPP power plant is handled pneumatically and 100% utilized in cement manufacturing (PPC and Composite cement) as per BIS standard.</p> <p>All the solid waste generated from colony and STP are disposed after segregating the waste into biodegradable and non-degradable. Treated STP sludge & biodegradable domestic is used as manure/composting for green belt development.</p> <p>Hazardous waste (Used Oil, Waste Oil etc.) and batteries are properly stored in confined area and sold to authorize recycler only.</p>
x.	An effort shall be made to use high calorific hazardous waste in the cement kiln and necessary provision shall be made accordingly.	<p>Complied.</p> <p>High calorific hazardous waste is being pre-processed and co-processed in kiln. CECB Atal Nagar, Naya Raipur has granted the permission for utilization of HW. Authorization vide letter No. 6573 /HSMD/HO/CECB/2022Raipur, Dated 20/12/2022</p>
xi.	Efforts shall be made to use low grade lime, more fly ash and solid waste in the cement manufacturing.	<p>Being complied.</p> <p>Low grade limestone, Fly ash and other solid wastes are being used as alternative raw material for cement manufacturing.</p>
xii.	All the fly ash shall be utilized as per Fly Ash Notification, 1999 subsequently amended in 2003. Efforts shall be made to use fly ash maximum in making Pozzolana Portland Cement (PPC).	<p>Complied.</p> <p>Fly ash generated from CPP is 100% utilized in cement manufacturing (PPC and Composite cement) as per BIS standard. Whereas fly ash and blast furnace slag (bought from outside) from other industries are also being used for making cement. Thus solid waste generated within the plant is utilized 100 %.</p>
xiii.	As proposed, green belt shall be developed in at least 33 % area in and around the cement plant as per the CPCB guidelines to mitigate the effects of air emissions in consultation with local DFO.	<p>Complied.</p> <p>We have developed more than 33% green belt is developed within the plant premises. Total plant area as per EC 238.97 Green belt area 83.03. Hec, no of existing plants 202598. Photographs of Plantation & application submitted to local DFO for green belt certification is attached as Annexure III.</p>

xiv.	All the recommendations made in the Charter on Corporate Responsibility for Environment Protection (CREP) for the Cement Plants shall be implemented.	Complied. CREP guidelines are being followed. Cement Plant and Captive Power Plant are well equipped with dust extraction system (Bag filters, Glass Bag House & ESP) of adequate capacity to achieve particulate matter emission as per the new Notification dated 10 th May, 2016.
xv.	The company shall provide housing for construction labor within the site with all necessary infrastructure and facilities such as fuel for cooking, mobile toilets, mobile \ STP, safe drinking water, medical health care, creche etc. The housing may be in the form of temporary structures to be removed after the completion of the project.	Noted & complied.
B. General Conditions		
i.	The project authority must adhere to the stipulations made by Chhattisgarh Environment Conservation Board (CECB) and State Government.	During operation phase the project authorities are complying all the conditions of EC and CTO issued by CECB i.e. Chhattisgarh Environment Conservation Board (CECB) and State Government. Hence Complied.
ii.	No further expansion or modification of the plant shall be carried out without prior approval of this Ministry.	Noted. Prior EC will be obtained in case of change/enhancement in production capacity.
iii.	The gaseous (SO ₂ , NO _x , CO) and particulate matter emissions from various units shall conform to the standards prescribed by the Chhattisgarh Environment Conservation Board. Inter-locking facility shall be provided between pollution control equipment and the process operation so that in the event of the pollution control equipment not working, the respective unit(s) is shut down automatically.	Complied Cement Plant and Captive Power Plant are equipped with pollution control equipment's (i.e. Bag filters, Glass Bag House & ESP) of adequate capacity to achieve Particulate Matter emission as per the new Notification dated 10 th May, 2016. Regular lime injection at boiler to reduce SO ₂ emissions and Low NO _x burner has been installed to reduce NO _x emission as per the new Notification dated 10 th May, 2016. CEMS (for PM, SO ₂ & NO _x) has been installed in cement plant and Power Plant and connectivity provided to CPCB, New Delhi and CECB Atal Nagar. Interlocking system is provided in pollution control equipment's. CEMS data of Cement Plant Line-I&II can be seen on URL- http://rtdms.cpcb.gov.in/industry-login and Id- environment.bhatapara-ind@adani.com CEMS data of CPP can be seen on URL- http://rtdms.cpcb.gov.in/industry-login Id- environment.bhatapara-ind@adani.com (Photographs of control equipment's are shown in Annexure I . Cement and CPP manual stacks monitoring results for the period of October 2023 to March 2024 are given in Annexure II

iv.	Industrial wastewater shall be properly collected, treated so as to conform to the standards prescribed under GSR 422 (E) dated 19th May, 1993 and 31st December, 1993 or as amended from time to time. The treated wastewater shall be utilized for plantation purpose.	Complied. Industrial wastewater is properly collected, treated as per the CTO discharge standards. The treated wastewater is used for the purpose of dust suppression within the plant area and also recycled in TPP process. Latest Monitoring results of water quality enclosed as Annexure II
v.	The company shall harvest surface as well as rainwater from the roof tops of the buildings and storm water drains to recharge the ground water and use the same water for the various activities of the project to conserve fresh water.	Complied. Rainwater harvesting system has been constructed in colony and in nearby villages. Roof tops rainwater and storm water drains are used to recharge the ground water. Rainwater that gets collected in the mined-out pit is used for various activities after proper settling and treatment. Collected rainwater is used for process and fresh water is conserved. As per CGWB regional map our area is covered in safe zone. Also we have installed Roof top Building Rain water recharge Structure (Nos. 7) in the plant and colony in 2022.
vi.	The overall noise levels in and around the plant area shall be kept well within the standards (85 dBA) by providing noise control measures including acoustic hoods, silencers, enclosures etc. on all sources of noise generation. The ambient noise levels shall conform to the standards prescribed under Environmental (Protection) Act, 1986 Rules, 1989 viz. 75 dBA (daytime) and 70 dBA (nighttime). Compliance to all the standards for DG sets for noise shall be ensured and acoustic enclosures around DG sets shall be provided.	Complied. Noise control measures including acoustic hoods, silencers, enclosures etc. are provided at various noise generating sources within Power and cement plant. The ambient noise levels are maintained below 85 dBA in the plant area, and ambient levels are maintained 75 dBA (daytime) and 70 dBA (nighttime). Noise monitoring carried out in core and buffer zone; report is enclosed as Annexure II
vii.	Proper housekeeping and adequate occupational health programmes must be taken up. All the persons working in the sensitive areas shall wear protective covers. Occupational Health Surveillance programme shall be done on a regular basis and records maintained. The programme must include lung function and sputum analysis tests once in six months.	Complied. Regular housekeeping is being carried out regularly. Occupational health and safety awareness program and mock drills are conducted regularly in order to sensitize workers. Pre-employment and periodic medical check-up of each employee is being performed, which includes lung function test and sputum analysis tests once in six months. Records are maintained at Occupational Health Centre (OHC) which is serviced by permanent doctors and health staff. EC six monthly returns are filed covering above data.
viii.	The company shall undertake eco-development measures including community welfare measures in the project area.	Complied. Ambuja Cement Foundation (ACF) is taking care of implementation of all CSR activities regularly as per rules. These activities are regularly undertaken in consultation with community and local administration and implemented within study area. CSR funds are utilized for Community welfare activities Ref. Annexure IV for details of activities and budget.

ix.	The project proponent shall also comply with all the environmental protection measures and safeguards recommended in the Rapid and Comprehensive EIA/EMP.	Complied. Environmental protection measures recommended in the EIA/EMP report are duly implemented in the plant on regularly basis.
x.	A separate environmental management cell with full-fledged laboratory facilities to carry out various management and monitoring functions shall be set up under the control of the Senior Executive.	Complied Environmental Management Cell has been established under supervision of Environmental Head with laboratory facilities. Environmental monitoring is being carried out through MoEF&CC & NABL accredited laboratories. Head of Environment is directly reporting to the Unit Head. The copy of Environment Cell formulated, and their functions is attached as Annexure-IX
xi.	As proposed, Rs. 2.02 Crores and Rs. 0.20 Crores shall be earmarked towards capital cost and recurring cost/annum for environmental pollution control measures shall be used exclusively to implement the conditions stipulated by the Ministry of Environment and Forests as well as the State Government. A time bound action plan along with the implementation schedule for all the conditions stipulated herein shall be submitted to the Ministry, CECB and CPCB. The funds so provided shall not be diverted for any other purposes.	Complied. Agreed and being complied. State of the art environmental protection measures have been implemented in the plant facilities. Annual funds are allocated for implementation and maintenance of the environmental protection measures to control pollution within permissible limits. Details of fund utilized in different heads are depicted in Annexure-V
xii.	The Regional Office of this Ministry at Bhopal/CPCB/CECB shall monitor the stipulated conditions. A six monthly compliance report and the monitored data along with statistical interpretation shall be submitted to them regularly.	Complied. As per EC and CTO as a part of compliance point wise compliances are filed regularly as per the frequency mentioned. Environment monitoring data is interpreted by MoEF&CC /NABET accredited experts and included in returns. Regular six- monthly compliance report and monitoring data is submitted to MoEF&CC, CECB & CPCB. Last EC compliance report was submitted by mail Copy is enclosed Annexure-VI
xiii.	The Project Authorities shall inform the Regional Office as well as the Ministry, the date of financial closure and final approval of the project by the concerned authorities and the date of commencing the land development work.	Noted and Complied These issues are covered in subsequent six- monthly reports. Environmental clearance granted on 23 rd December 2008. Annual Financial Closure is on 31 st December.

xiv.	<p>The Project Proponent should inform the public that the project has been accorded environmental clearance by the Ministry and copies of the clearance letter are available with the CECB and may also be seen at Website of the Ministry of Environment and Forests at http://envfor.nic.in. This shall be advertised within seven days from the date of issue of the clearance letter at least in two local newspapers that are widely circulated in the region of which one shall be in the vernacular language of the locality concerned and a copy of the same shall be forwarded to the Regional office.</p>	<p>Complied. Advertisement for obtaining EC for change in capacity is filed in subsequent six -monthly returns. The advertisement of grant of environmental clearance was published in local widely circulated newspapers. Copy of information to the public is enclosed As Annexure-VII.</p>
7.	The Ministry or any competent authority may stipulate any further condition(s) on receiving reports from the project authorities. The above conditions shall be monitored by the Regional Office of this Ministry located at Bhopal.	Noted
8.	The Ministry may revoke or suspend the clearance if implementation of any of the above conditions is not satisfactory.	Noted
9.	Any other conditions or alteration in the above conditions shall have to be implemented by the project authorities in a time bound manner.	Noted
10.	Any appeal against this environmental clearance shall lie with the National Environment Appellate Authority, if preferred within a period of 30 days as prescribed under Section 11 of the National Environment Appellate Act, 1997.	Noted
11.	The above conditions will be enforced, inter-alia under the provisions of the Water(Prevention and Control of Pollution) Act, 1974 the Air (Prevention and Control of Pollution) Act,1981 the Environment (Protection) Act, 1986 and the Public Liability Insurance Act, 1991 Along with their amendments and rules.	Noted

Compliance of the conditions stipulated in the environmental clearance given by ministry of environment and forests for the expansion project from 2.4 MTPA TO 3.5 MTPA, Ref.no. J-11011/72/2009-IA II (I), Date: 10th SeptemberMay 2009.

Sr. No.	EC Conditions	Compliance Status as on 22 May 2024
A. Specific Conditions.		
i.	The company shall comply with the stipulation made in the environmental clearance granted to the existing plant by the Ministry of Environment and Forests vide letter No. J-11011/539/2008 dated 23rd December, 2008.	Noted and complied. During operation phase the project authorities are complying all the conditions of EC and CTO issued by CECB i.e. Chhattisgarh Environment Conservation Board (CECB) and State Government.
ii.	The particulate matter emissions from various sources shall not exceed 50 mg/Nm ³ . Bag house/ filters shall be provided to control air emissions to achieve the prescribed standards. The fugitive emissions during loading and unloading shall be suitably controlled.	Complied Cement Plant and Captive Power Plant are equipped with pollution control equipment's (i.e. Bag filters, Glass Bag House & ESP) of adequate capacity to achieve Particulate Matter emission as per the new Notification dated 10 th May, 2016. Regular lime injection at boiler to reduce SO ₂ emissions and Low NO _x burner has been installed to reduce NO _x emission as per the new Notification dated 10 th May, 2016 at Captive Power Plant. Our APC are having adequate capacity and the particulate emissions from the cement plant and captive power plant (CPP) are maintained below 50 mg/Nm ³ . Interlocking facilities are also installed, in case of failure of APC the respective unit gets automatically shut off. CEMS (for PM, SO ₂ &NO _x) has been installed in cement plant and Power Plant and connectivity provided to CPCB, New Delhi and CECB Atal Nagar. Interlocking system is provided in pollution control equipment's. CEMS data of Cement Plant Line-I&II can be seen on URL- http://rtdms.cpcb.gov.in/industry-login and Id- environment.bhatapara-ind@adani.com CEMS data of CPP can be seen on URL - http://rtdms.cpcb.gov.in/industry-login Id- environment.tppbhatapara-ind@adani.com (Photographs of control equipment's are shown in Annexure I . Regular water sprinkling at (No. of locations 6) is being done in loading and unloading area. Stack emission monitoring and Fugitive dust emission monitoring undertaken through QCI-NABET MoEF&CC approved laboratory is enclosed as Annexure-II

iii.	The locations of ambient air quality monitoring stations shall be set up as per statutory requirement in consultation with Chhattisgarh Environment Conservation Board (CECB) and additional stations shall be installed, if required, in the downwind direction as well as where maximum ground level concentrations are anticipated.	Complied Four (4) Continuous Ambient Air Quality Monitoring Stations (CAAQMS) have been installed in consultation with CECB and result can be seen on URL- https://cecb.glensserver.com/#/login : login AMBUJA Password: Ambuja@789. Regular manual ambient air quality monitoring as per CPCB is being done in the core and buffer zone (at ten locations). Manual AAQM results by undertaken through QCI-NABET MoEF&CC approved laboratory are enclosed as Annexure II
iv.	Data on ambient air quality stack emission and fugitive emissions shall be uploaded on the company's website and also regularly submitted online to the Ministry's Regional Office at Bhopal, Chhattisgarh Environment Conservation Board and Central Pollution Control Board as well as hard copy once in six months. Data on SPM, SO ₂ and NO _x shall also be displayed prominently outside the premises at the appropriate place for the general public.	Compiled. Data on ambient air quality, stack emission is regularly submitted to MOEF&CC, CECB & CPCB. Same is uploaded on the company's website. Website link. http://www.ambujacement.com/sustainable-development/environment/ CEMS has been installed in all the major stacks and its connectivity given to CPCB and CECB portal. Six monthly compliances submitted to MoEF&CC, Raipur office regularly. Data on SPM, SO ₂ and NO _x is also displayed at the main gate of the plant premises.
v.	The Company shall submit a water conservation and management plan to meet the requirement of 150 m ³ /day from the existing water sources and no ground water shall be drawn for the plant. The copy of the water conservation and management plan shall be submitted to the Ministry and its Regional Office at Bhopal within three months from date of issue of this letter.	Complied Rainwater accumulated in Rawan Mines pit is being used for plant operation. The total water requirement for plant operation is 6044.KLD. Rainwater harvesting measures are implemented in the plant & colony. Treated effluent from STP in the colony is used for dust suppression and plantation in mines and plant area. The rainwater is collected in the plant area and further stored in Badarapali Pond to Recharge and utilization
vi.	Green belt shall be developed at least in 33% of plant area to mitigate the effect of fugitive emissions all around the plant as per the guidelines of Central Pollution Control Board.	Complied. We have developed more than 33% green belt is developed within the plant premises. Total plant area as per EC 238.97 Green belt area 83.55 Hec, no of existing plants 202598 Photographs of Plantation & Certificate shown in Annexure III.
vii.	The project authorities shall transport the raw materials and cement in covered means to avoid fugitive emission during transport.	Compiled. Raw material and cement are transported in fully covered/closed manner. Fly ash is transported in closed bulkers. Transport roads are regularly sprinkled with water and are periodically maintained. A photograph of material transport is enclosed as Annexure VIII
viii.	The clinker requirement shall be met from the existing unit and no additional clinker manufacturing facility shall be installed by the company for this grinding unit.	Noted and agreed.

ix.	All the recommendations mentioned in the CREP guidelines for the cement plants shall be followed and compiled.	Complied. CREP guidelines are being followed. Cement Plant and Captive Power Plant are well equipped with dust extraction system (Bag filters, Glass Bag House & ESP) of adequate capacity to achieve particulate matter emission as per the new Notification dated 10 th May 2016.
x.	Provision shall be made for the housing of construction labor within the site with all necessary infrastructure and facilities such as fuel for cooking, mobile toilets, mobile STP, Safe drinking water, medical health care, crèche etc. The housing may be in the form of temporary structures to be removed after the completion of the project.	Noted and compiled.
B. General Conditions		
i.	The project authorities shall strictly adhere to the stipulations of the SPCB/state government or any statutory body.	Noted and compiled. During operation phase the project authorities are complying all the conditions of EC and CTO issued by CECB i.e. Chhattisgarh Environment Conservation Board (CECB) and State Government.
ii.	All other necessary statutory clearances from the concern Departments including 'No Objection Certificate' from the State Pollution Control Board shall be obtained prior to commencement of construction and/or operation.	Complied.
iii.	No further expansion or modification of the plant shall be carried out without prior approval of the Ministry of Environment and Forests. In case of deviations or alterations in the project proposal from those submitted to this Ministry for clearance, a fresh reference shall be made to add additional environmental protection measures required, if any.	Noted and agreed. Prior EC will be obtained in case of change/enhancement in production capacity.
iv.	At no time, the emissions shall exceed the prescribed limits. In the event of failure of any pollution control system adopted by the unit, the unit shall be immediately put out of operation and shall not be restarted until the desired efficiency has been achieved.	Noted and being compiled. Our APC are having adequate capacity and the particulate emissions from the cement plant and captive power plant (CPP) are maintained below 50 mg/Nm ³ . Interlocking facilities are also installed, in case of failure of APC the respective unit gets automatically shut off.

v.	<p>The gaseous emissions (SO₂, NO_x) and particulate matter along with RSPM levels from various process units shall conform to the standards prescribed by the concerned authorities from time to time.</p>	<p>Compiled.</p> <p>CEMS (PM, SO₂ & NO_x) has been installed in cement plant and Power Plant and connectivity provided to CPCB, New Delhi and CECB Atal Nagar, Naya Raipur. Interlocking facilities are also installed, in case of failure of APC the respective unit gets automatically shut off.</p> <p>Regular lime injection at boiler to reduce SO₂ emissions and Low NO_x burner has been installed to reduce NO_x emission as per the new Notification dated 10th May, 2016.</p> <p>CEMS data of Cement Plant Line-I&II can be seen on URL-http://rtdms.cpcb.gov.in/industry-login and Id- environment.bhatapara-ind@adani.com CEMS data of CPP can be seen on URL -http://rtdms.cpcb.gov.in/industry-login Id- environment.tppbhatapara-ind@adani.com. (Photographs of control equipment's are shown in Annexure I.</p> <p>Cement and CPP manual stacks Monitoring results for the period of October 2023 to March 2024 are given in Annexure II</p>
vi.	<p>The company shall undertake following Waste Minimization measures.</p> <ul style="list-style-type: none"> • Reuse of by-products from the process as raw materials or as raw material substitutes in other processes. • Use of "Closed pneumatic" system for transport of fine material. • All venting systems shall be connected with dust arresting equipment. • Dust collected in pollution control equipment shall be reused 	<p>Compiled.</p> <p>Fly ash generated from captive power plant is fully utilized for making PPC grade cement.</p> <p>Fly ash generated from the power plant is handled by a closed pneumatic system. All venting and transfer points are connected with bag filters for arresting the dust. Dust collected in pollution control equipment is reused in the process.</p>
vii.	<p>Fugitive emissions in the work zone environment, product, and raw materials storage area shall be regularly monitored. The emissions shall conform to the limits imposed by the State Pollution Control Boards/Central Pollution Control Board.</p>	<p>Compiled.</p> <p>Regular water sprinkling at various is being done in the raw material storage area and loading and unloading area. Mobile water sprinkling system is recently ordered to strengthen the existing dust suppressions systems. Fugitive dust monitoring undertaken through QCI-NABET MoEF&CC approved laboratory is enclosed as Annexure-II</p>
viii.	<p>The overall noise levels in and around the plant area shall be kept well within the standards by providing noise control measures including acoustic hoods, silencers, enclosures etc. on all sources of noise generation. The ambient noise levels shall conform to the standards prescribed under Environmental (Protection) Act, 1986 Rules, 1989 viz. 75 dBA (daytime) and 70 dBA (night time).</p>	<p>Complied.</p> <p>Noise control measures including acoustic hoods, silencers, enclosures etc. are provided at various noise generating sources within Power and cement plant. The ambient noise levels are maintained below 85 dBA in the plant area, and ambient levels are maintained 75 dBA (day time) and 70 dBA (night time). Noise monitoring carried out in core and buffer zone, report is enclosed as Annexure II</p>

ix.	The company shall develop rainwater harvesting structures to harvest the run-off water for recharge of ground water.	Compiled. Rainwater is being harvested in mined out pits. The water requirement of plant and Mines is fulfilled by the harvested water stored in mined out pits. Roof tops rainwater and storm water drains are used to recharge the ground water. Collected rainwater is used for process and fresh water is conserved. As per CGWB regional map our area is covered in safe zone. Also we have installed Roof top Building Rain water recharge Structure (Nos. 7) in the plant and colony in 2022.
x.	Occupational health and safety measures shall be undertaken. Periodic monitoring for exposure to dust on the workers should be conducted and records maintained including health records of the workers. The company shall engage a doctor who is trained in occupational health.	Compiled. Occupational health and safety awareness program and mock drills are conducted regularly in order to sensitize workers. Pre-employment and periodic medical check-up of each employee is being performed, which includes lung function test and sputum analysis test. Records are maintained at Occupational Health Centre (OHC) which is serviced by permanent doctors and health staff. EC six monthly returns are filed covering above data. The Company has engaged doctors and health staff having in depth knowledge of occupational health.
xi.	The company shall undertake eco-developmental measures including community welfare measures in the project area for the overall improvement of the environment. The eco-development plan should be submitted to the SPCB within three months of receipt of this letter for approval.	Complied. Ambuja Cement Foundation (ACF) is taking care of implementation of all CSR activities regularly as per rules. These activities are regularly undertaken in consultation with community and local administration and implemented within study area. CSR funds are utilized for Community welfare activities Ref. Annexure IV for details of activities and budget.
xii.	A separate Environmental Management Cell equipped with full-fledged laboratory facilities shall be set up to carry out the Environmental Management and Monitoring functions.	Complied The Environmental Management Cell has been established under supervision of the Environmental Head with laboratory facilities. Environmental monitoring is being carried out through MOEF&CC & NABL accredited laboratories. The Head of Environment is directly reporting to the Unit Head.
xiii.	The project authorities shall earmark adequate funds to implement the conditions stipulated by the Ministry of Environment and Forests as well as the State Government. An implementation schedule for all the conditions stipulated herein shall be submitted to the Ministry's Regional Office. The funds so provided shall not be diverted for any other purpose.	Agreed and being complied. State of the art environmental protection measures have been implemented in the plant facilities. Necessary funds are allocated for implementation and maintenance of the environmental protection measures to control pollution within permissible limits. Details of fund utilized in different heads are depicted in Annexure-V .

xiv.	The implementation of the project vis-à-vis environmental action plans shall be monitored by the concerned Regional Office of the Ministry/SPCB/CPCB. A six - monthly compliance status report shall be submitted to monitoring agencies and shall be posted on the website of the Company.	Compiled. Six monthly compliance reports are regularly submitted to MoEF&CC, CPCB & CECB and are uploaded on the website of the company.
xv.	The Project Proponent shall inform the public that the project has been accorded environmental clearance by the Ministry and copies of the clearance letter are available with the SPCB and may also be seen at Website of the Ministry at http://envfor.nic.in . This shall be advertised within seven days from the date of issue of the clearance letter, at least in two local newspapers that are widely circulated in the region of which one shall be in the vernacular language of the locality concerned and a copy of the same shall be forwarded to the concerned regional office of the Ministry.	Compiled. Advertisement for obtaining EC for change in capacity is filed in subsequent six-monthly returns.
xvi.	The project authorities shall inform the Regional Office as well as the Ministry, the date of financial closure and final approval of the project by the concerned authorities and the date of start of the project.	Compiled. These issues are covered in subsequent six-monthly reports. <ul style="list-style-type: none"> ● Environmental Clearance date:15.05.2009 ● Financial Closure is on 31st December 2021
6.	The ministry may revoke or suspend the clearance if implementation of any of the above conditions is not satisfactory.	Noted.
7.	The Ministry reserves the right to stipulate additional conditions, if found necessary. The company in a time bound manner shall implement these conditions.	Noted.
8.	Any appeal against this environmental clearance shall lie with the National Environment Appellate Authority, if preferred within a period of 30 days as prescribed under Section 11 of the National Environment Appellate Authority Act, 1997.	Noted.
9.	The above conditions will be enforced, inter-alia under the provisions of the Water (Prevention and Control of Pollution) Act, 1974, Air (Prevention and Control of Pollution) Act, 1981 the Environment (Protection) Act, 1986, Hazardous waste (Management and Handling) Rules, 2003 and the Public Liability Insurance Act, 1991 along with their amendments and rules.	Noted.

COMPLIANCE OF THE CONDITIONS STIPULATED IN THE ENVIRONMENTAL CLEARANCE (AMENDED) GIVEN BY MINISTRY OF ENVIRONMENT AND FORESTS FOR THE INTERMEDIATE CEMENT CAPACITY EXPANSION FROM 1.8 MTPA TO 2.9 MTPA, Ref. No. J-11011/72/2009-IA-II (I), Dated: 13.05.2011.

This has reference to letter no. ACL: BH: ENV: 25: 2010/7216 dated 6.12.2010 seeking permission for expansion of intermediate capacity of cement production from 1.8 MTPA to 2.9 MTPA by installing 1.1 MTPA cement grinding mill. It is noted that intermediate cement capacity expansion for Stage I would be from 1.8 MTPA to 2.9 MTPA by installing a ball mill and then cement capacity expansion for Stage II would be from 2.9 MTPA to 3.5 MTPA by installing a VRPM.

Sr. No.	EC Conditions	Compliance Status as on 22 May 2024
	Additional conditions	
i.	The Stage I and Stage II cement expansion should be within the maximum capacity for which environmental clearance has been obtained i.e. 3.5 MTPA.	Complied The Stage I and Stage II cement expansion is within the maximum capacity of 3.5 MTPA for which environmental clearance has been obtained.
ii.	There shall not be any change in process technology or any other process parameters, or air pollution control system.	Noted and Agreed There is no change in process technology, or any other process parameters, or air pollution control system.
iii.	Continuous on-line monitors for the particulate emissions shall be installed. Interlocking facilities shall be provided in the pollution control equipment so that in the event of the pollution control equipment not working, the respective unit(s) is shut down automatically.	Compiled. CEMS (PM, SO ₂ & NO _x) has been installed in cement plant and Power Plant and connectivity provided to CPCB portal, New Delhi and CECB Atal Nagar, Naya Raipur. CEMS has been installed in all the stacks and its connectivity given to CPCB and CECB portal. Interlocking facilities are also installed, in case of failure of APC the respective unit gets automatically shut off. CEMS data of Cement Plant Line-I&II can be seen on URL- http://rtdms.cpcb.gov.in/industry-login and Id- environment.bhatapara-ind@adani.com CEMS data of CPP can be seen on URL - http://rtdms.cpcb.gov.in/industry-login Id- environment.tppbhatapara-ind@adani.com (Photographs of control equipment's are shown in Annexure I. Manual stack emission monitoring results for the period of October 2023 to March 2024 are given in Annexure II

iv.	A copy of clearance letter shall be sent by the proponent to concern Panchayat, ZilaParishad/Municipal Corporation, Urban Local Body and the Local NGO, if any, from whom suggestions/representations if any were received while processing the proposal. The clearance letter shall also be put up on the website of the company by the proponent.	Compiled. Copy of information to the public is enclosed as Annexure- VII. EC Letter can be seen on company website: www.ambujacement.com
v.	The environment statement for each financial year ending 31st March in Form-V as is mandated to be submitted by the project proponent to the concerned State Pollution Control Board as prescribed under the Environment (Protection) Rules, 1986 as amended subsequently, shall also be put on the website of the Company along with the status of compliance of environmental clearance conditions and shall also be sent to the respective regional Office of the MoEF&CC by email	Complied Environmental statement is submitted annually to CECB. Compliance of environment clearance conditions is regularly submitted to MoEF&CC regional office on six monthly basis, the same is also uploaded on the company's website. Copy of Environment statement submitted to MoEF&CC is enclosed as Annexure-X
5.	In case of change in the scope of the project, the company shall obtain fresh environmental clearance.	Noted.

Compliance of the conditions stipulated in the Environmental Clearance (amended) given by ministry of Environment and Forests for expansion in clinker production capacity (4.42 to 4.8 MTPA) by process optimization F NO. J-11011/355/2005-IA-II (I), Dated: 25.01.2016

This has reference to letter no. ACL/Bhatapara/Line-II/01 dated 13.08.2015 regarding amendment in Environment Clearance under clause 7(ii) of EIA notification 2006, for the project mentioned above.

The project was earlier accorded Environment Clearance by the Ministry vide letter No. J-11011/355/2005-IA-II (I) dated 02nd September April, 2007, for Clinker production capacity of 4.42 MTPA (Line I-1.70 MTPA and Line-II 2.72 MTPA) cement production capacity of 3.5 MTPA; CPP of 63 MW (2 * 15 MW & 1* 33 MW) capacity & DG set having 14 MW. The proponent intends to optimize the clinker production capacity of existing Line-II (i.e. 2.72 MTPA) by process optimization.

Sr. No.	EC Conditions	Compliance Status as on 22 May 2024
	Additional conditions	
3.	There is no additional land requirement for the proposed expansion project, as the same will be done within the existing plant premises by optimization. No additional manpower requirement is envisaged. No additional capital cost is required for proposed expansion. The proponent has mentioned that the existing Air Pollution Control Equipments (APCEs) have adequate potential for proposed marginal expansion capacity.	Compiled. No additional land was required during expansion. Expansion was done within the plant with process optimization. No additional capital cost was incurred. There is no change in process technology, or any other process parameters, or air pollution control system.
4	The proposal was considered by the expert Appraisal Committee (Industry) during its meetings held on 02 th September-14 th November'2015 (27 th Meeting) and 3 rd -4 th September, 2015 (47 th Meeting) and recommended the project for Environment Clearance subject to stipulation of following additional specific conditions: (i) The Project proponent should install 24 * 7 air devices to monitor air emission, as provided by CPCB and submit reports to the Ministry and its Regional Office. (ii) The expansion project shall comply with the new MOEFCC standards vide GSR 612(E) dated 25.08.2014 with respect to particulate matter, SO ₂ , NO _x for Cement Sector.	Complied Four (4 Nos.) real-time CAAQMS has been installed with consultation of CECB and result can be seen on URL- https://cecb.glensserver.com/#/login : login AMBUJA Password: Ambuja@789.Regular ambient air quality monitoring at six locations is being done. CEMS (PM, SO ₂ & NO _x) has been installed in cement plant and Power Plant and connectivity provided to CPCB portal, New Delhi and CECB Atal Nagar, Naya Raipur. CEMS has been installed in all the major stacks and its connectivity given to CPCB and CECB portal Continuous manual Stack Emission, Ambient Air Quality Monitoring (AAQM), Noise monitoring, water quality and soil quality reports enclosed as Annexure II .The 3 rd party monitoring is undertaken through QCI-NABET MoEF&CC approved laboratory.

5.	The Ministry had considered the recommendations of Expert appraisal Committee (Industry) and hereby decided to accord Environment Clearance for Expansion in clinker production capacity from 4.42 MTPA to 4.8 MTPA by Process Optimization in line-2 of the existing clinker capacity from 2.72 MTPA to 3.1 MTPA of M/S Ambuja Cement Ltd. Under clause 7(ii) of EIA Notification, 2006 subject to strict compliance of the following additional specific conditions:	Noted and being compiled.
A: SPECIFIC CONDITION:		
(i)	The project proponent should install 24 * 7 air devices to monitor air emission, as provided by CPCB and submit report to Ministry and its Regional office	Complied Four (4 Nos.) Continuous Ambient Air Quality Monitoring Stations (CAAQMS) have been installed in consultation with CECB and result can be seen on URL- https://cecb.glensserver.com/#/login : login AMBUJA Password: Ambuja@789. CEMS has been installed in all the major stacks and its connectivity given to CPCB and CECB portal. Monitoring data is submitted six monthly to MoEF&CC RO office, Raipur.
(ii)	The expansion project shall comply with the new MOEFCC standards vide GSR 612(E) dated 25.08.2014 with respect to particulate matter, SO ₂ , NO _x for Cement Sector	Noted and being compiled.
6.	The project proponent shall comply with all the environmental safeguards stipulated in the environmental clearance letter of EC No. dated 02 nd September April, 2007	Noted and compiled. Environmental protection measures suggested in the EIA/EMP report are duly implemented in the plant on regularly basis as mentioned in the letter no Compliance report of the same is annexed herewith.
7.	The company shall obtain fresh Environment Clearance in case of any change in the scope of the project.	Noted
8.	This issues with the approval of Competent Authority.	Noted

.....

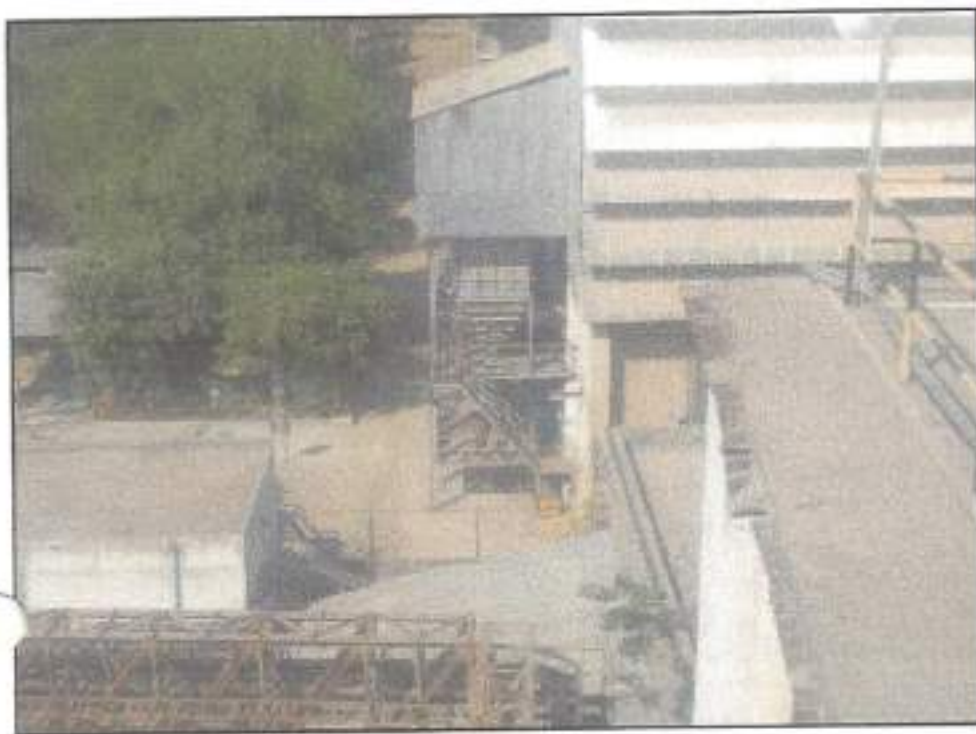
ANNEXURE-1



ESP at TTP 15 MW



ESP at Cooler



Bag Filter at Crusher Stack



Hybrid Filter at Cement Mill



Ultimate
ENVIROLYTICAL SOLUTIONS

HDD-272, PHASE III- NEAR JP CHOWK,
RING ROAD NO - 2, KAHIR NAGAR, RUPPUR, C.G. -192099
PH - 0771 - 4027777 | email - ultimatenviro@gmail.com

Name & Address Of The Customer

TO,
AMBUJA CEMENT LIMITED
(UNIT: BHATAPARA)
P.O. Rawan, Tehsil: Baloda Bazar,
Dist.: Baloda Bazar-Bhatapara-493331

MONTH OF SAMPLING

OCTOBER-2023 to MARCH-2024

TYPES OF REPORT

HALF YEARLY MONTHLY AVERAGE REPORT

SAMPLE DETAILS

Monitoring For	Ambient Air Quality Monitoring
Sampling Location	Buffer Zone
Customer Ref. No. & Date	2800956665/NE08, Date: 10/06/2023
Duration Of Sampling	As per CPCB norms
Sample Collected by	Laboratory Chemist
Sampling Procedure	As Per Method Reference
Sample Quantity/Packing	Filter Paper (PM10): 1X1 No., Filter Paper (PM2.5): 1X1 No. SO2: 30mlX1 No. PVC Bottle, NO2: 30mlX1 No. PVC BOTTLE, Rubber Bladder: 1X1 No., C6H6: CARCOAL Tube, OSCONE: 10MLX1 No. Brown PVC Bottle, NH4: 10MLX1 No. Brown PVC Bottle

TEST REPORT

Parameter	Unit	NAAQM Standard	METHOD REFERENCE	Devrani Village	Karmandi Village	Mopar Village
Particulate Matter size less than 10 microns (PM ₁₀)	µg/m ³	100	IS 5182 (Part 23): 2006 & CPCB Guidelines Vol.-I	63.2	62.9	64.2
Particulate Matter size less than 2.5 microns (PM _{2.5})	µg/m ³	60	IS 5182 (Part 24): 2019 & CPCB Guidelines Vol.-I	21.3	19.5	20.3
Sulphur Dioxide (SO ₂)	µg/m ³	80	IS 5182 (Part 2): 2001, RA 2006 & CPCB Guidelines Vol.-I	13.5	15.4	14.1
Nitrogen Dioxide (NO ₂)	µg/m ³	80	IS 5182 (Part 6): 2006 & CPCB Guidelines Vol.-I	16.3	17.8	15.5
Carbon Monoxide (CO)	mg/m ³	4.0	IS 5182 (Part 10): 1999, RA 2003	0.52	0.50	0.68
Ozone (O ₃)	µg/m ³	180	CPCB Guidelines Vol-I	6.3	7.5	8.0
Ammonia (NH ₃)	µg/m ³	400	CPCB Guidelines Vol-I	13.1	14.6	13.2
Arsenic (As)	ng/m ³	6.0	CPCB Guidelines Vol-I and AAS Method	N.D.	N.D.	N.D.
Nickel (Ni)	ng/m ³	20	CPCB Guidelines Vol-I and AAS Method	N.D.	N.D.	N.D.
Lead (Pb)	µg/m ³	1.0	CPCB Guidelines Vol-I and AAS Method	N.D.	N.D.	N.D.
Benzene (C ₆ H ₆)	µg/m ³	5.0	IS 5182 (Part 11): 2006	N.D.	N.D.	N.D.
Benzo (a) Pyrene	ng/m ³	1.0	IS 5182 (Part 12): 2014	N.D.	N.D.	N.D.

Note: N.D.: Not Detected.

REMARKS: RESULTS ARE AS ABOVE

Terms & conditions

- The use of the report for publication, arbitration or as the legal dispute is forbidden.
- Test sample will be retained for 15 days after issue of test report unless otherwise agreed with the customer.
- This is for information as the party has asked for above test(s) only.

REVIEWED BY



For ULTIMATE ENVIROLYTICAL SOLUTIONS

AUTHORIZED SIGNATORY

End of the test report



Ultimate
ENVIROLYTICAL SOLUTIONS

Format No.: UES/FORM/09

HDD-272, PHASE III- NEAR JP CHOWN,
RING ROAD NO - 2, KAMR NAGAR, RAIPUR, C.G. -492099
PH - 0771 - 4027777 email - ultimatenviro@gmail.com

Name & Address Of The Customer		MONTH OF SAMPLING	OCTOBER-2023 to MARCH-2024
TO, AMBUJA CEMENT LIMITED (UNIT: BHATAPARA) P.O. Rawan, Tehsil: Baloda Bazar, Dist: Baloda Bazar-Bhatapara-493331		TYPES OF REPORT	HALF YEARLY MONTHLY AVERAGE REPORT
SAMPLE DETAILS			
Monitoring For	Ambient Air Quality Monitoring		
Sampling Location	Buffer Zone		
Customer Ref. No. & Date	2800956663/NE08, Date 10/06/2023		
Duration Of Sampling	As per CPCB norms		
Sample Collected by	Laboratory Chemist		
Sampling Procedure	As Per Method Reference		
Sample Quantity/Packing	Filter Paper (PM10): 1X1 No., Filter Paper (PM2.5): 1X1 No. 802/ 30mlX1 No. PVC Bottle, NO2: 30mlX1 No. PVC BOTTLE, Rubber Bladder: 1X1 No., C5H6: CARCOAL Tube, OZONE: 10MLX1 No. Brown PVC Bottle, NH4: 10MLX1 No. Brown PVC Bottle		

TEST REPORT						
Parameter	Unit	NAAQM Standard	METHOD REFERENCE	Maldi Village	Parsadi Village	Mudhipar Village
Particulate Matter size less than 10 microns (PM ₁₀)	µg/m ³	100	IS 5182 (Part 23):2006 & CPCB Guidelines Vol.-I	60.3	62.4	59.1
Particulate Matter size less than 2.5 microns (PM _{2.5})	µg/m ³	60	IS 5182 (Part 24):2019 & CPCB Guidelines Vol.-I	17.3	18.1	19.2
Sulphur Dioxide (SO ₂)	µg/m ³	80	IS 5182 (Part 2):2001, RA 2006 & CPCB Guidelines Vol.-I	15.6	14.1	16.8
Nitrogen Dioxide (NO ₂)	µg/m ³	80	IS 5182 (Part 6): 2006 & CPCB Guidelines Vol.-I	17.4	16.4	17.1
Carbon Monoxide (CO)	mg/m ³	4.0	IS 5182 (Part 10):1999, RA 2003	0.58	0.55	0.62
Ozone (O ₃)	µg/m ³	180	CPCB Guidelines Vol-I	8.6	6.8	8.4
Ammonia (NH ₃)	µg/m ³	400	CPCB Guidelines Vol-I	11.0	14.6	13.3
Arsenic (As)	ng/m ³	6.0	CPCB Guidelines Vol-I and AAS Method	N.D.	N.D.	N.D.
Nickel (Ni)	ng/m ³	20	CPCB Guidelines Vol-I and AAS Method	N.D.	N.D.	N.D.
Lead (Pb)	µg/m ³	1.0	CPCB Guidelines Vol-I and AAS Method	N.D.	N.D.	N.D.
Benzene (C ₆ H ₆)	µg/m ³	5.0	IS 5182 (Part 11):2006	N.D.	N.D.	N.D.
Benzo(a) Pyrene	ng/m ³	1.0	IS 5182 (Part 12):2014	N.D.	N.D.	N.D.

Note: N.D.: Not Detected.

REMARKS: RESULTS ARE AS ABOVE

Terms & conditions

- The use of the report for publications, arbitration or as the legal dispute is forbidden.
- Test sample will be retained for 15 days after issue of test report unless otherwise agreed with the customer.
- This is the information as the party has asked for above test(s) only.

 REVIEWED BY		For ULTIMATE ENVIROLYTICAL SOLUTIONS  AUTHORIZED SIGNATORY
---	---	---

-----End of the test report-----



Ultimate
ENVIROLYTICAL SOLUTIONS

HDD-272, PHASE III- NEAR JP CHOWN,
RING ROAD NO - 2, KAMBI NAGAR, RAIPUR, C.G. -492099
PH - 0771 - 4027777 | email - ultimatenviro@gmail.com

Form No.: UES/FORM/09

Name & Address Of The Customer

TO,
AMBUJA CEMENT LIMITED
(UNIT: BHATAPARA)
P.O. Rawan, Tehsil: Baloda Bazar,
Dist: Baloda Bazar-Bhatapara-493331

MONTH OF SAMPLING

OCTOBER-2023 to MARCH-2024

TYPES OF REPORT

HALF YEARLY MONTHLY AVERAGE REPORT

SAMPLE DETAILS

Monitoring For	Ambient Air Quality Monitoring
Sampling Location	Buffer Zone
Customer Ref. No. & Date	2800956665/NK08, Date:10/06/2023
Duration Of Sampling	As per CPCB norms
Sample Collected by	Laboratory Chemist
Sampling Procedure	As Per Method Reference
Sample Quantity/Packing	Filter Paper (PM10): 1X1 No., Filter Paper (PM2.5): 1X1 No. 802: 30x1X1 No. PVC Bottle, W02: 30x1X1 No. PVC BOTTLE, Rubber Bladder: 1X1 No., CSH6: CHARCOAL Tube. GEONE: 10x1X1 No. Brown PVC Bottle, NH4:10x1X1 No. Brown PVC Bottle

TEST REPORT

Parameter	Unit	NAAQM Standard	METHOD REFERENCE	Kairatal Village	Bhadrapali Village	Arjuni Village
Particulate Matter size less than 10 microns (PM ₁₀)	µg/m ³	100	IS 5182(Part 23):2006 & CPCB Guidelines Vol.-I	65.7	66.4	53.6
Particulate Matter size less than 2.5 microns (PM _{2.5})	µg/m ³	60	IS 5182(Part 24):2019 & CPCB Guidelines Vol.-I	19.6	18.2	18.4
Sulphur Dioxide (SO ₂)	µg/m ³	80	IS 5182(Part 2):2001, RA 2006 & CPCB Guidelines Vol.-I	15.3	16.6	18.1
Nitrogen Dioxide (NO ₂)	µg/m ³	80	IS 5182(Part 6): 2006 & CPCB Guidelines Vol.-I	16.4	18.1	17.1
Carbon Monoxide(CO)	mg/m ³	4.0	IS 5182(Part 10):1999, RA 2003	0.60	0.64	0.67
Ozone (O ₃)	µg/m ³	180	CPCB Guidelines Vol-I	7.2	7.6	7.4
Ammonia (NH ₃)	µg/m ³	400	CPCB Guidelines Vol-I	10.3	13.7	14.1
Arsenic (As)	ng/m ³	6.0	CPCB Guidelines Vol-I and AAS Method	N.D.	N.D.	N.D.
Nickel (Ni)	ng/m ³	20	CPCB Guidelines Vol-I and AAS Method	N.D.	N.D.	N.D.
Lead (Pb)	µg/m ³	1.0	CPCB Guidelines Vol-I and AAS Method	N.D.	N.D.	N.D.
Benzene (C ₆ H ₆)	µg/m ³	5.0	IS 5182 (Part 11):2006	N.D.	N.D.	N.D.
Benzo (a) Pyrene	ng/m ³	1.0	IS 5182 (Part 12):2014	N.D.	N.D.	N.D.

Note: N.D.: Not Detected.

REMARKS: RESULTS ARE AS ABOVE

Terms & conditions

- The use of this report for publication, circulation or as the legal document is forbidden.
- Test sample will be retained for 15 days after issue of test report unless otherwise agreed with the customer.
- This is for information as the party has asked for above test(s) only.

REVIEWED BY



For ULTIMATE ENVIROLYTICAL SOLUTIONS

AUTHORIZED SIGNATORY

-----End of the test report-----



Ultimate
ENVIROLYTICAL SOLUTIONS

Format No.: UES/FORM/08

HOD-272, PHASE III- NEAR JP CHOWN,
RING ROAD NO - 2, KABIR NAGAR, RAIPUR, C.G. -492099
PH - 0774 - 4027777 email - ultimatenviro@gmail.com

Name & Address Of The Customer

TO,
AMBUJA CEMENT LIMITED
(UNIT: BHATAPARA)
P.O. Rawan, Tehsil: Baloda Bazar,
Dist: Baloda Bazar-Bhatapara-493331

MONTH OF SAMPLING

OCTOBER-2023 to MARCH-2024

TYPES OF REPORT

HALF YEARLY MONTHLY AVERAGE REPORT

SAMPLE DETAILS

Monitoring For	Ambient Air Quality Monitoring
Sampling Location	Buffer Zone
Customer Ref. No. & Date	2800956665/ME08, Date: 10/06/2023
Duration Of Sampling	As per CPCB norms
Sample Collected by	Laboratory Chemist
Sampling Procedure	As Per Method Reference
Sample Quantity/Packing	Filter Paper (PM10): 1X1 No., Filter Paper (PM2.5): 1X1 No. 802; 30x1X1 No. PVC Bottle, NO2: 30x1X1 No. PVC BOTTLE, Rubber Bladder: 1X1 No., C6H6: CHARCOAL Tube, OZONE: 10MLX1 No. Brown PVC Bottle, NH4: 10MLX1 No. Brown PVC Bottle

TEST REPORT

Parameter	Unit	NAAQM Standard	METHOD REFERENCE	Rawan Village	Pausari Village	Bharseli Village
Particulate Matter size less than 10 microns (PM ₁₀)	µg/m ³	100	IS 5182(Part 23):2006 & CPCB Guidelines Vol.-I	63.0	67.0	59.0
Particulate Matter size less than 2.5 microns (PM _{2.5})	µg/m ³	60	IS 5182(Part 24):2019 & CPCB Guidelines Vol.-I	16.7	18.3	19.2
Sulphur Dioxide (SO ₂)	µg/m ³	80	IS 5182(Part 2):2001, RA 2006 & CPCB Guidelines Vol.-I	17.3	18.5	19.1
Nitrogen Dioxide (NO ₂)	µg/m ³	80	IS 5182(Part 6): 2006 & CPCB Guidelines Vol.-I	17.5	18.6	17.1
Carbon Monoxide(CO)	mg/m ³	4.0	IS 5182(Part 10):1999, RA 2003	0.68	0.63	0.65
Ozone (O ₃)	µg/m ³	180	CPCB Guidelines Vol-I	8.2	8.4	7.5
Ammonia (NH ₃)	µg/m ³	400	CPCB Guidelines Vol-I	12.4	8.6	9.1
Arsenic (As)	ng/m ³	6.0	CPCB Guidelines Vol-I and AAS Method	N.D.	N.D.	N.D.
Nickel (Ni)	ng/m ³	20	CPCB Guidelines Vol-I and AAS Method	N.D.	N.D.	N.D.
Lead (Pb)	µg/m ³	1.0	CPCB Guidelines Vol-I and AAS Method	N.D.	N.D.	N.D.
Benzene (C ₆ H ₆)	µg/m ³	5.0	IS 5182 (Part 11):2006	N.D.	N.D.	N.D.
Benzo (a) Pyrene	ng/m ³	1.0	IS 5182 (Part 12):2014	N.D.	N.D.	N.D.

Note: N.D.: Not Detected.

REMARKS: RESULTS ARE AS ABOVE

Terms & conditions

- > The use of this report for publication, advertisement or as the legal dispute is forbidden.
- > Test sample will be retained for 15 days after issue of test report unless otherwise agreed with the customer.
- > This is for information as the party has asked for above method only.

REVIEWED BY



For ULTIMATE ENVIROLYTICAL SOLUTIONS

AUTHORIZED SIGNATORY

-----End of the test report-----



Ultimate
ENVIROLYTICAL SOLUTIONS

HOD-272, PHASE III- NEAR JP CROWN,

RING ROAD NO - 2, KAHIR NAGAR, RAIPUR, C.G. -492099

PH - 0771 - 4027777 /email- ultimatenviro@gmail.com

Name & Address Of The Customer

TO,
AMBUJA CEMENT LIMITED
(UNIT: BHATAPARA)
P.O. Rawan, Tehsil: Baloda Bazar,
Dist.: Baloda Bazar-Bhatapara-493331

SAMPLING MONTH

OCTOBER-2023 to MARCH-2024

TYPES OF REPORT

HALF YEARLY MONTH AVERAGE REPORT

SAMPLE DETAILS

MONITORING FOR	AMBIENT AIR QUALITY MONITORING	CUSTOMER REF. NO. & DATE	2800956665/NE08 Date:10/06/2023
SAMPLING LOCATION	CORE SONE A.V.P. SCHOOL		
DURATION OF SAMPLING	24 HOURS		
SAMPLING PROCEDURE	AS PER METHOD REFERENCE		
SAMPLE QUANTITY/PACKING	FILTER PAPER (PM ₁₀): 1X1 NO., FILTER PAPER (PM _{2.5}): 1X1 NO. SO ₂ : 30MLX1 NO. PVC BOTTLE, NO ₂ : 30MLX1 NO. PVC BOTTLE RUBBER BLADDER: 1X1 NO.		

Test Method and NAAQM Standard for Ambient Air Quality Monitoring

Parameter	Method Reference	NAAQM Standard
Particulate Matter size less than 10 microns (PM ₁₀)	IS 5182 (Part 23): 2006 & CPCB Guidelines Vol.-I	100
Particulate Matter size less than 2.5 microns (PM _{2.5})	IS 5182 (Part 24): 2019 CPCB Guidelines Vol.-I	60
Sulphur Dioxide (SO ₂)	IS 5182 (Part 2): 2001, RA 2006 & CPCB Guidelines Vol.-I	80
Nitrogen Dioxide (NO ₂)	IS 5182 (Part 6): 2006 & CPCB Guidelines Vol.-I	80
Carbon Monoxide (CO)*	IS 5182 (Part 10): 1999, RA 2003	4.0

Sampling Location	Date of Sampling	PM ₁₀ µg/m ³	PM _{2.5} µg/m ³	SO ₂ µg/m ³	NO ₂ µg/m ³	CO* mg/m ³
A.V.P. SCHOOL	OCT-2023	52.52	16.26	16.77	17.6	0.60
	NOV-2023	68.82	22.88	21.62	18.9	0.63
	DEC-2023	69.80	22.16	21.52	19.7	0.73
	JAN-2024	73.01	25.83	25.17	25.0	0.69
	FEB-2024	67.76	22.68	21.81	21.17	0.68
	MAR-2024	72.15	26.26	25.28	26.70	0.69

Terms & conditions

- > The report for publication, arbitration or as legal dispute is forbidden.
- > Test sample will be retained for 15 days after issue of test report unless otherwise agreed with customer.
- > This is for information as the party has asked for above test(s) only.

 REVIEWED BY	 AUTHORIZED SIGNATORY
----------------------------	-------------------------------------

-----End of the test report-----



Ultimate
ENVIROLYTICAL SOLUTIONS

HDD-272, PHASE III- NEAR 3RD CROWN,
RING ROAD NO - 2, KAMR NAGAR, RAIPUR, C.G. -492099
PH - 0771 - 4027777 | email - ultimatenviro@gmail.com

Formet No.: UES/FORM/09

Name & Address Of The Customer

TO,
AMBUJA CEMENT LIMITED
(UNIT: BHATAPARA)
P.O. Rawan, Tehsil: Baloda Bazar,
Dist.: Baloda Bazar-Bhatapara-493331

SAMPLING MONTH

OCTOBER-2023 to MARCH-2024

TYPES OF REPORT

HALF YEARLY MONTH AVERAGE REPORT

SAMPLE DETAILS

MONITORING FOR	AMBIENT AIR QUALITY MONITORING	CUSTOMER REF. NO. & DATE	2800956665/MS08 Date: 10/06/2023
SAMPLING LOCATION	CORE ZONE AMBUJA CEMENT COLONY GUST HOUSE		
DURATION OF SAMPLING	24 HOURS		
SAMPLING PROCEDURE	AS PER METHOD REFERENCE		
SAMPLE QUANTITY/PACKING	FILTER PAPER (PM ₁₀): 1X1 NO., FILTER PAPER (PM _{2.5}): 1X1 NO. SO ₂ : 30MLX1 NO. PVC BOTTLE, NO ₂ : 30MLX1 NO. PVC BOTTLE RUBBER BLADDER: 1X1 NO.		

Test Method and NAAQM Standard for Ambient Air Quality Monitoring

Parameter	Method Reference	NAAQM Standard
Particulate Matter size less than 10 microns (PM ₁₀)	IS 5182 (Part 23): 2006 & CPCB Guidelines Vol.-I	100
Particulate Matter size less than 2.5 microns (PM _{2.5})	IS 5182 (Part 24): 2019 CPCB Guidelines Vol.-I	60
Sulphur Dioxide (SO ₂)	IS 5182 (Part 2): 2001, RA 2006 & CPCB Guidelines Vol.-I	80
Nitrogen Dioxide (NO ₂)	IS 5182 (Part 6): 2006 & CPCB Guidelines Vol.-I	80
Carbon Monoxide (CO)*	IS 5182 (Part 10): 1999, RA 2003	4.0

Sampling Location	Date of Sampling	PM ₁₀ µg/m ³	PM _{2.5} µg/m ³	SO ₂ µg/m ³	NO ₂ µg/m ³	CO* mg/m ³
AMBUJA CEMENT COLONY GUST HOUSE	OCT-2023	54.36	16.46	16.96	17.15	0.72
	NOV-2023	70.41	24.16	22.91	18.60	0.67
	DEC-2023	70.30	25.58	20.65	18.60	0.67
	JAN-2024	73.95	25.68	24.32	25.05	0.68
	FEB-2024	75.03	26.01	24.87	26.12	0.70
	Mar-2024	75.04	25.95	24.88	26.13	0.71

Terms & conditions

- > The report for publication, arbitration or as legal dispute is forbidden.
- > Test sample will be retained for 15 days after issue of test report unless otherwise agreed with customer.
- > This is for information as the party has asked for above test(s) only.

Shel

REVIEWED BY



For ULTIMATE ENVIROLYTICAL SOLUTIONS

Shel

AUTHORIZED SIGNATORY

-----End of the test report-----



Ultimate
ENVIROLYTICAL SOLUTIONS

HDD-272, PHASE III- NEAR JP CHOWN,
RING ROAD NO - 2, KABIR NAGAR, RAIPUR, C.G. -492099
PH - 0771 - 4027777 email - ultimatenviro@gmail.com

Formid No.: UEE/FORM/09

Name & Address Of The Customer

TO,
AMBUJA CEMENT LIMITED
(UNIT: BHATAPARA)
P.O. Rawan, Tehsil: Baloda Bazar,
Dist.: Baloda Bazar-Bhatapara-493331

SAMPLING MONTH

OCTOBER-2023 to MARCH-2024

TYPES OF REPORT

HALF YEARLY MONTH AVERAGE REPORT

SAMPLE DETAILS

MONITORING FOR	AMBIENT AIR QUALITY MONITORING	CUSTOMER REF. NO. & DATE	2800956665/NE08 Date: 10/06/2023
SAMPLING LOCATION	CORE ZONE AMBUJA CEMENT PLANT MATERIAL GATE AREA		
DURATION OF SAMPLING	24 HOURS		
SAMPLING PROCEDURE	AS PER METHOD REFERENCE		
SAMPLE QUANTITY/PACKING	FILTER PAPER (PM ₁₀): 1X1 NO., FILTER PAPER (PM _{2.5}): 1X1 NO. SO ₂ : 30MLX1 NO. PVC BOTTLE, NO ₂ : 30MLX1 NO. PVC BOTTLE RUBBER BLADDER: 1X1 NO.		

Test Method and NAAQM Standard for Ambient Air Quality Monitoring

Parameter	Method Reference	NAAQM Standard
Particulate Matter size less than 10 microns (PM ₁₀)	IS 5182 (Part 23): 2006 & CPCB Guidelines Vol.-I	100
Particulate Matter size less than 2.5 microns (PM _{2.5})	IS 5182 (Part 24): 2019 CPCB Guidelines Vol.-I	60
Sulphur Dioxide (SO ₂)	IS 5182 (Part 2): 2001, RA 2006 & CPCB Guidelines Vol.-I	80
Nitrogen Dioxide (NO ₂)	IS 5182 (Part 6): 2006 & CPCB Guidelines Vol.-I	80
Carbon Monoxide (CO) ⁺	IS 5182 (Part 10): 1999, RA 2003	4.0

Sampling Location	Date of Sampling	PM ₁₀ µg/m ³	PM _{2.5} µg/m ³	SO ₂ µg/m ³	NO ₂ µg/m ³	CO ⁺ mg/m ³
AMBUJA CEMENT PLANT MATERIAL GATE AREA	OCT-2023	62.06	15.18	16.76	17.68	0.71
	NOV-2023	68.55	23.17	24.11	19.33	0.68
	DEC-2023	75.41	26.61	23.03	19.62	0.76
	JAN-2024	75.65	26.05	25.03	25.05	0.69
	FEB-2024	78.35	26.98	26.77	25.80	0.69
	MAR-2024	73.69	26.39	26.78	25.34	0.67

Terms & conditions

- > The report for publication, arbitration or as legal dispute is forbidden.
- > Test sample will be retained for 15 days after issue of test report unless otherwise agreed with customer.
- > This is for information as the party has asked for above test(s) only.

[Signature]

REVIEWED BY



For ULTIMATE ENVIROLYTICAL SOLUTIONS

[Signature]

AUTHORIZED SIGNATORY

-----End of the test report-----



Ultimate
ENVIROLYTICAL SOLUTIONS

HDD-272, PHASE III- NEAR JP CHOWK,
RING ROAD NO - 2, KABRI NAGAR, RAIPUR, C.G. -492099
PH - 0771 - 4027777 / email - ultimatenviro@gmail.com

Format No.: UES/FORM/09

Name & Address Of The Customer

TO,
AMBUJA CEMENT LIMITED
(UNIT: BHATAPARA)
P.O. Rawan, Tehsil: Baloda Bazar,
Dist.: Baloda Bazar-Bhatapara-493331

SAMPLING MONTH

OCTOBER-2023 to MARCH-2024

TYPE OF REPORT

HALF YEARLY MONTH AVERAGE REPORT

SAMPLE DETAILS

MONITORING FOR	AMBIENT AIR QUALITY MONITORING	CUSTOMER REF. NO. & DATE	2800956665/NE08 Date: 10/06/2023
SAMPLING LOCATION	CORE SOME AMBUJA CEMENT PLANT RAILWAY OPERATION AREA		
DURATION OF SAMPLING	24 HOURS		
SAMPLING PROCEDURE	AS PER METHOD REFERENCE		
SAMPLE QUANTITY/PACKING	FILTER PAPER (PM ₁₀): 1X1 NO., FILTER PAPER (PM _{2.5}): 1X1 NO. SO ₂ : 30MLX1 NO. PVC BOTTLE, NO ₂ : 30MLX1 NO. PVC BOTTLE RUBBER BLADDER: 1X1 NO.		

Test Method and NAAQM Standard for Ambient Air Quality Monitoring

Parameter	Method Reference	NAAQM Standard
Particulate Matter size less than 10 microns (PM ₁₀)	IS 5182 (Part 23): 2006 & CPCB Guidelines Vol.-I	100
Particulate Matter size less than 2.5 microns (PM _{2.5})	IS 5182 (Part 24): 2019 CPCB Guidelines Vol.-I	60
Sulphur Dioxide (SO ₂)	IS 5182 (Part 2): 2001, RA 2006 & CPCB Guidelines Vol.-I	80
Nitrogen Dioxide (NO ₂)	IS 5182 (Part 6): 2006 & CPCB Guidelines Vol.-I	80
Carbon Monoxide (CO)*	IS 5182 (Part 10): 1999, RA 2003	4.0

Sampling Location	Date of Sampling	PM ₁₀ µg/m ³	PM _{2.5} µg/m ³	SO ₂ µg/m ³	NO ₂ µg/m ³	CO* mg/m ³
AMBUJA CEMENT PLANT RAILWAY OPERATION AREA	OCT-2023	61.61	15.0	17.23	17.61	0.67
	NOV-2023	68.23	24.06	24.21	19.02	0.66
	DEC-2023	76.36	26.81	24.83	22.15	0.72
	JAN-2024	75.18	26.17	24.16	24.96	0.68
	FEB-2024	74.86	26.22	25.23	24.62	0.75
	MAR-2024	79.90	26.78	26.09	23.86	0.67

Terms & conditions

- > The report for publication, arbitration or as legal dispute is forbidden.
- > Test sample will be retained for 15 days after issue of test report unless otherwise agreed with customer.
- > This is for information as the party has asked for above test(s) only.

[Signature]

REVIEWED BY



For ULTIMATE ENVIROLYTICAL SOLUTIONS

[Signature]

AUTHORIZED SIGNATORY

-----End of the test report-----



Ultimate
ENVIROLYTICAL SOLUTIONS

HDD-272, PHASE-IB- NEAR JP CHOWK,
RING ROAD NO - 2, KAHIR NAGAR, RAIPUR, C.G. -492099
PH - 0771 - 4027777 | email - ultimatenviro@gmail.com

Format No.: UES/FORM/09

Name & Address Of The Customer

TO,
AMBUJA CEMENT LIMITED
(UNIT: BHATAPARA)
P.O. Rawan, Tehsil: Baloda Bazar,
Dist.: Baloda Bazar-Bhatapara-493331

SAMPLING MONTH

OCTOBER-2023 to MARCH-2024

TYPES OF REPORT

HALF YEARLY MONTH AVERAGE REPORT

SAMPLE DETAILS

MONITORING FOR	AMBIENT AIR QUALITY MONITORING	CUSTOMER REF. NO. & DATE	2800956665/NE08 Date: 10/06/2023
SAMPLING LOCATION	CORE ZONE AMBUJA CEMENT PLANT AFR OFFICE		
DURATION OF SAMPLING	24 HOURS		
SAMPLING PROCEDURE	AS PER METHOD REFERENCE		
SAMPLE QUANTITY/PACKING	FILTER PAPER (PM ₁₀): 1X1 NO., FILTER PAPER (PM _{2.5}): 1X1 NO. SO ₂ : 30MLX1 NO. PVC BOTTLE, NO ₂ : 30MLX1 NO. PVC BOTTLE RUBBER BLADDER: 1X1 NO.		

Test Method and NAAQM Standard for Ambient Air Quality Monitoring

Parameter	Method Reference	NAAQM Standard
Particulate Matter size less than 10 microns (PM ₁₀)	IS 5182 (Part 23): 2006 & CPCB Guidelines Vol.-I	100
Particulate Matter size less than 2.5 microns (PM _{2.5})	IS 5182 (Part 24): 2019 CPCB Guidelines Vol.-I	60
Sulphur Dioxide (SO ₂)	IS 5182 (Part 2): 2001, RA 2006 & CPCB Guidelines Vol.-I	80
Nitrogen Dioxide (NO ₂)	IS 5182 (Part 6): 2006 & CPCB Guidelines Vol.-I	80
Carbon Monoxide (CO)*	IS 5182 (Part 10): 1999, RA 2003	4.0

Sampling Location	Date of Sampling	PM ₁₀ µg/m ³	PM _{2.5} µg/m ³	SO ₂ µg/m ³	NO ₂ µg/m ³	CO* mg/m ³
AMBUJA CEMENT PLANT AFR OFFICE	OCT-2023	60.73	16.57	17.87	17.42	0.68
	NOV-2023	68.08	24.72	24.04	20.33	0.58
	DEC-2023	74.15	26.68	24.77	20.08	0.77
	JAN-2024	75.1	26.13	24.16	24.96	0.68
	FEB-2024	75.80	25.91	23.50	25.06	0.73
	MAR-2024	75.15	25.96	24.74	25.73	0.70

Terms & conditions

- The report for publication, arbitration or as legal dispute is forbidden.
- Test sample will be retained for 15 days after issue of test report unless otherwise agreed with customer.
- This is for information as the party has asked for above test(s) only.

[Signature]

REVIEWED BY



For ULTIMATE ENVIROLYTICAL SOLUTIONS

[Signature]

AUTHORIZED SIGNATORY

-----End of the test report-----



Ultimate
ENVIRONMENTAL SOLUTIONS

HDD-272, PHASE IB- NEAR JP CHOWK,
HING ROAD NO - 2, KAHIR NAGAR, RAIPUR, C.G. -492099
PH - 0771 - 4027777 / email - ultimatenviro@gmail.com

Form No.: UES/FORM/09

Name & Address of The Customer

TO,
AMBUJA CEMENT LIMITED
(UNIT: BHATAPARA)
P.O. Rawan, Tehsil: Baloda Bazar,
Dist.: Baloda Bazar-Bhatapara-493331

MONTH OF SAMPLING

OCTOBER-2023 to MARCH-2024

TYPES OF REPORT

HALF YEARLY MONTHLY AVERAGE REPORT

SAMPLE DETAILS

SAMPLE TYPE	BO DRINKING WATER	ORDER /REFERENCE:	2800956665/NE08, Date10/06/2023
CUSTOMER SAMPLE ID	BORE WELL CEMENT PLANT	AMBUJA COLONY BORE WELL	AFR BORE WELL
PACKING OF SAMPLE	3 L X 1 NO. PVC CAN 1 L X 1 NO. PVC CAN 1 L X 1 NO. GLASS BOTTLE	SEALED	SAMPLE COLLECTED BY CHEMIST
SAMPLING PROCEDURE	IS:3025(PART I):1987 RA 2003; APHA 22ND ED. 2012, 1060-B, 1-39	QUANTITY RECEIVED	5 LTR

TEST REPORT

SR. NO.	PARAMETER	UNIT	METHOD OF TEST	AS PER IS 10500:2012		RESULT		
				Acceptable Limit	Permissible limit	BORE WELL CEMENT PLANT	AMBUJA COLONY BORE WELL	AFR BORE WELL
1	Colour	Hazen	IS:3025:(Part-4)	5	15	1	1	1
2	Odour	-	IS:3025:(Part-5)	Agreeable	Agree	Agree	Agree	Agree
3	Taste	-	IS:3025:(Part-8)	Agreeable	Agree	Agree	Agree	Agree
4	Ph	-	APHA 23 rd Ed.2017,4500-H ⁺ -B, 4-92	6.5-8.5	No Relax	7.78	7.81	7.89
5	Turbidity	NTU	APHA 23 rd Ed.2017,2130-B,2-13	1	5	0.70	0.73	0.69
6	Electrical Conductivity	μS/cm	IS 3025(part-14):1984, RA 2013	-	-	443.7	436.8	454.4
7	Total Dissolved Solids	mg/Lit	IS 3025(part-16):1984, RA 2006	500	2000	265.0	261.0	272.0
8	Alkalinity Total (as CaCO ₃)	mg/Lit	IS 3025(part-23):1986, RA 2003	200	600	150.0	148.0	146.0
9	Total Hardness (as CaCO ₃)	mg/Lit	APHA 23 rd Ed.2017,2340-C, 2-44,45	200	600	184.0	182.0	174.0
10	Calcium (as Ca)	mg/Lit	APHA 23 rd Ed.2017,3500-Ca-B, 3-67	75	200	48.89	48.09	51.30
11	Magnesium (as Mg)	mg/Lit	APHA 23 rd Ed.2017,3500-Mg-B, 3-84	30	100	15.07	15.07	11.18
12	Chloride (as Cl)	mg/Lit	APHA 23 rd Ed.2017,4500-Cl-B, 4-72	250	1000	17.9	17.9	12.9
13	Sulphate (as SO ₄)	mg/Lit	APHA 23 rd Ed.2017,4500-SO ₄ -E, 4-190	200	400	19.71	19.41	33.9
14	Nitrate (as NO ₃)	mg/Lit	APHA 23 rd Ed.2017,4500-NO ₃ -B, 4-122	45	No Relax	6.81	5.91	12.2
15	Boron (as B)	mg/Lit	APHA 23 rd Ed.2017,4500-B-B, 4-25	0.5	1.0	BDL	BDL	BDL
16	Iron (as Fe)	mg/Lit	APHA 23 rd Ed.2017,3111-B,3-18	0.3	No Relax	0.01	0.02	BDL
17	Fluoride (as F)	mg/Lit	APHA 23 rd Ed.2017,4500-F-B & D, 4-84 & 87	1	1.5	0.02	0.01	BDL
18	Manganese (as Mn)	mg/Lit	APHA 23 rd Ed.2017,3111-B, 3-18	0.1	0.3	BDL	BDL	BDL
19	Lead (as Pb)	mg/Lit	APHA 23 rd Ed.2017,3111-B, 3-18	0.01	No Relax	BDL	BDL	BDL



Ultimate
ENVIROLYTICAL SOLUTIONS

HOD-272, PHASE III- NEAR JP CHOWK,
RING ROAD NO - 2, KABIR NAGAR, RAIPUR, C.G. - 492099
PH - 0771 - 4027777 email - ultimatenviro@gmail.com

Format No.: UES/FORM/09

TEST REPORT

SR. NO.	PARAMETER	UNIT	METHOD OF TEST	AS PER IS 10500:2012		RESULT		
				Acceptable Limit	Permissible limit	BORE WELL CEMENT PLANT	AMBUJA COLONY BORE WELL	AFR BORE WELL
20	Zinc (as Zn)	mg/Lit	APHA 23 rd Ed.2017,3111-B, 3-18	5	15	BDL	BDL	BDL
21	Copper (as Cu)	mg/Lit	APHA 23 rd Ed.2017,3111-B, 3-18	0.05	1.5	BDL	BDL	BDL
22	Cadmium (as Cd)	mg/Lit	APHA 23 rd Ed.2017,3500-Cd, 3-105	0.003	No Relax	BDL	BDL	BDL
23	Mercury (as Hg)	mg/Lit	APHA 23 rd Ed.2017,3112-B, 3-23	0.001	No Relax	BDL	BDL	BDL
24	Arsenic (as as)	mg/Lit	APHA 23 rd Ed.2017,3114-C, 3-38	0.01	0.05	BDL	BDL	BDL
25	Aluminum (as Al)	mg/Lit	IS:3025:(Part-2)	0.01	No Relax	BDL	BDL	BDL
26	Total Chromium (as Cr)	mg/Lit	IS:3025:(Part-2)	0.05	No Relax	BDL	BDL	BDL

Microbiological Analysis

1	Total Coliform	MPN/100 ML	IS: 1622:1981:RA:2019	Shall not be detectable in any 100 ml sample	Absent	Absent	Absent
2	E. Coli	MPN/100ml	IS: 1622:1981:RA:2019	Shall not be detectable in any 100ml sample	Absent	Absent	Absent

Note: mg/lit.: milligram per liter, N.D.: Not Detected.

REMARKS: RESULTS ARE AS ABOVE

Terms & conditions

- > The report for publication, arbitration or as legal dispute is forbidden.
- > Test sample will be retained for 15 days after issue of test report unless otherwise agreed with customer.
- > This is for information as the party has asked for above test(s) only.

REVIEWED BY



For ULTIMATE ENVIROLYTICAL SOLUTIONS

AUTHORIZED SIGNATORY

-----End of the test report-----



Ultimate
ENVIROLYTICAL SOLUTIONS

Format No.: UES/FORM/09

HDD-272, PHASE III- NEAR JP CHOWK,
RING ROAD NO - 2, KAMR NAGAR, RAIPUR, C.G. -492099
PH - 0771 - 4027777 email - ultimatenviron@gmail.com

Name & Address of The Customer		MONTH OF SAMPLING		OCTOBER-2023 to MARCH-2024	
TO, AMBUJA CEMENT LIMITED (UNIT: BHATAPARA) P.O. Rawan, Tehsil: Baloda Bazar, Dist.: Baloda Bazar-Bhatapara-493331		TYPES OF REPORT		HALF YEARLY MONTHLY AVERAGE REPORT	
SAMPLE DETAILS					
SAMPLE TYPE	RO DRINKING WATER	ORDER /REFERENCE:	2900956665/NE08, Date10/06/2023		
CUSTOMER SAMPLE ID	NEW OCR RO DRINKING WATER	AMBUJA COLONY RO DRINKING WATER	PLANT CANTEN RO WATER		
PACKING OF SAMPLE	3 L X 1 NO. PVC CAN 1 L X 1 NO. PVC CAN 1 L X 1 NO. GLASS BOTTLE	SEALED	SAMPLE COLLECTED BY	CHEMIST	
SAMPLING PROCEDURE	IS:3025 (PART 1):1987 RA 2003: APHA 22ND ED. 2012, 2060-B, 1-39	QUANTITY RECEIVED	5 LTR		

TEST REPORT

SR. NO.	PARAMETER	UNIT	METHOD OF TEST	AS PER IS 10500:2012		RESULT		
				Acceptable Limit	Permissible Limit	NEW CCR RO WATER	GUST HOUSE RO WATER	PLANT CANTEN RO WATER
1	Colour	Hazen	IS:3025:(Part-4)	5	15	1	1	1
2	Odour	-	IS:3025:(Part-5)	Agreeable	Agree	Agree	Agree	Agree
3	Taste	-	IS:3025:(Part-8)	Agreeable	Agree	Agree	Agree	Agree
4	Ph	-	APHA 23 rd Ed.2017,4500-H ⁺ -B, 4-92	6.5-8.5	No Relax	7.48	7.55	7.71
5	Turbidity	NTU	APHA 23 rd Ed.2017,2130-B,2-13	1	5	0.51	0.47	0.51
6	Electrical Conductivity	μS/cm	IS 3025(part-14):1984, RA 2013	-	-	303.5	291.1	306.7
7	Total Dissolved Solids	mg/Lit	IS 3025(part-16):1984, RA 2006	500	2000	181	176	183
8	Alkalinity Total (as CaCO ₃)	mg/Lit	IS 3025(part-23):1986, RA 2003	200	600	102.0	100.0	104.0
9	Total Hardness (as CaCO ₃)	mg/Lit	APHA 23 rd Ed.2017,2340-C, 2-44,45	200	600	128.0	124.0	128.0
10	Calcium (as Ca)	mg/Lit	APHA 23 rd Ed.2017,3500-Ca-B, 3-67	75	200	34.47	32.87	33.67
11	Magnesium (as Mg)	mg/Lit	APHA 23 rd Ed.2017,3500-Mg-B, 3-84	30	100	10.21	10.21	10.69
12	Chloride (as Cl)	mg/Lit	APHA 23 rd Ed.2017,4500-Cl-B, 4-72	250	1000	13.9	11.9	12.9
13	Sulphate (as SO ₄)	mg/Lit	APHA 23 rd Ed.2017,4500-SO ₄ -E, 4-190	200	400	13.46	13.09	13.61
14	Nitrate (as NO ₃)	mg/Lit	APHA 23 rd Ed.2017,4500-NO ₃ -B, 4-122	45	No Relax	1.73	4.01	5.12
15	Boron (as B)	mg/Lit	APHA 23 rd Ed.2017,4500-B-B, 4-25	0.5	1.0	BDL	BDL	BDL
16	Iron (as Fe)	mg/Lit	APHA 23 rd Ed.2017,3111-B,3-18	0.3	No Relax	BDL	BDL	BDL
17	Fluoride (as F)	mg/Lit	APHA 23 rd Ed.2017,4500-F-B & D, 4-84 & 87	1	1.5	BDL	BDL	BDL
18	Manganese (as Mn)	mg/Lit	APHA 23 rd Ed.2017,3111-B, 3-18	0.1	0.3	BDL	BDL	BDL



Ultimate
ENVIROLYTICAL SOLUTIONS

HDD-272, PHASE III- NEAR JP CHOWK,
RING ROAD NO - 2, KABRI NAGAR, RAIPUR, C.G. -492099
PH - 0771 - 4027777 :email - ultimatenviro@gmail.com

Form No. - UES/FORM/09

TEST REPORT

SR. NO.	PARAMETER	UNIT	METHOD OF TEST	AS PER IS 10500:2012		RESULT		
				Acceptable Limit	Permissible Limit	NEW CCR RO WATER	GUEST HOUSE RO WATER	PLANT CANTEN RO WATER
19	Lead (as Pb)	mg/Lit	APHA 23 rd Ed.2017,3111-B, 3-18	0.01	No Relax	BDL	BDL	BDL
20	Zinc (as Zn)	mg/Lit	APHA 23 rd Ed.2017,3111-B, 3-18	5	15	BDL	BDL	BDL
21	Copper (as Cu)	mg/Lit	APHA 23 rd Ed.2017,3111-B, 3-18	0.05	1.5	BDL	BDL	BDL
22	Cadmium (as Cd)	mg/Lit	APHA 23 rd Ed.2017,3500-Cd, 3-105	0.003	No Relax	BDL	BDL	BDL
23	Mercury (as Hg)	mg/Lit	APHA 23 rd Ed.2017,3112-B, 3-23	0.001	No Relax	BDL	BDL	BDL
24	Arsenic (as as)	mg/Lit	APHA 23 rd Ed.2017,3114-C, 3-38	0.01	0.05	BDL	BDL	BDL
25	Aluminum (as Al)	mg/Lit	IS:3025:(Part-2)	0.01	No Relax	BDL	BDL	BDL
26	Total Chromium (as Cr)	mg/Lit	IS:3025:(Part-2)	0.05	No Relax	BDL	BDL	BDL

Microbiological Analysis

1	Total Coliform	MPN/100 ML	IS: 1622:1981:RA:2019	Shall not be detectable in any 100 ml sample	Absent	Absent	Absent
2	E. Coli	MPN/100ml	IS: 1622:1981:RA:2019	Shall not be detectable in any 100ml sample	Absent	Absent	Absent

Note: mg/lit.: milligram per liter, N.D.: Not Detected.

REMARKS: RESULTS ARE AS ABOVE

Terms & conditions

- > The report for publication, arbitration or as legal dispute is forbidden.
- > Test sample will be retained for 15 days after issue of test report unless otherwise agreed with customer.
- > This is for information as the party has asked for above test(s) only.

 REVIEWED BY		For ULTIMATE ENVIROLYTICAL SOLUTIONS  AUTHORIZED SIGNATORY
---	---	--

-----End of the test report-----



Ultimate
ENVIROLYTICAL SOLUTIONS

HDD-272, PHASE III- NEAR JP CHOWN,

RING ROAD NO - 2, KAHIR NAGAR, RAIPUR, C.G. -492099

PH - 0771 - 4027777 | email - ultimatenviro@gmail.com

Format No.: UCS/FORM/09

Name & Address of The Customer

TO,
AMBUJA CEMENT LIMITED
(UNIT: BHATAPARA)
P.O. Rawan, Tehsil: Baloda Bazar,
Dist.: Baloda Bazar-Bhatapara-493331

MONTH OF SAMPLING

March-2024

DATE OF REPORT

HALF YEARLY MONTHLY AVERAGE REPORT

SAMPLE DETAILS

SAMPLING LOCATION	PIEZO LEVEL MONITORING	ORDER /REFERENCE:	2800956665/NE08, Date 10/06/2023
MONITORING FOR	GROUND WATER LEVEL MONITORING		
SAMPLE COLLECTED BY	LABORATORY CHEMIST		

S.NO	NAME OF VILLAGE	SAMPLE CODE	DATE OF MEASUREMENT	DEPTH (MTR)
1	LATWA	GW-1	07-03-2024	6.20
2	CHHUIHA	GW-2	07-03-2024	6.70
3	KUKURDIH	GW-3	07-03-2024	5.74
4	RAWAN	GW-4	07-03-2024	5.90
5	PAUSARI	GW-5	07-03-2024	6.10
6	KHAMRIYA	GW-6	07-03-2024	4.70
7	KARMADA	GW-7	07-03-2024	7.30
8	ARJUNI	GW-8	07-03-2024	6.50
9	MALDI	GW-9	07-03-2024	5.40
10	MOPAR	GW-10	07-03-2024	4.80
11	DEVrani	GW-11	07-03-2024	4.90
12	SEMRADIH	GW-12	07-03-2024	7.10
13	CHANDIH	GW-13	07-03-2024	6.80
14	CHAMPA	GW-14	07-03-2024	7.60
15	DHABADIH	GW-15	07-03-2024	5.30
16	RISDA	GW-16	07-03-2024	4.10
17	TOPA	GW-17	07-03-2024	6.80
18	AMERA	GW-18	07-03-2024	5.70
19	MAGARCHABA	GW-19	07-03-2024	3.30
20	BHADARPALLI	GW-20	07-03-2024	6.00
21	BALODA BAZAR	GW-20	07-03-2024	5.10

Note: mg/lit.: milligram per liter, N.D.: Not Detected.

REMARKS: RESULTS ARE AS ABOVE

Terms & conditions

- > The report for publication, arbitration or as legal dispute is forbidden.
- > Test sample will be retained for 15 days after issue of test report unless otherwise agreed with customer.
- > This is for information as the party has asked for above test(s) only.

REVIEWED BY



For ULTIMATE ENVIROLYTICAL SOLUTIONS

AUTHORIZED SIGNATORY

-----End of the test report-----



Ultimate
ENVIROLYTICAL SOLUTIONS

HEAD-272, PHASE III- NEAR JP CHOWK.

JUNG ROAD NO - 2, KAHNI NAGAR, RAIPUR, C.G. -492099

PH - 0771 - 4627777 email - ultimatenviro@gmail.com

Formet No.: UES/FORM/08

Name & Address Of The Customer		MONTH OF SAMPLING	OCTOBER-2023 to MARCH-2024
TO, AMBUJA CEMENT LIMITED (UNIT: BHATAPARA) P.O. Rawan, Tehsil: Baloda Bazar, Dist: Baloda Bazar-Bhatapara-493331		TYPES OF REPORT	HALF YEARLY MONTHLY AVERAGE REPORT
SAMPLE DETAILS			
Monitoring For	Work Place Air Monitoring (PLANT)		
Customer Ref. No. & Date	2800956665/NE08, Date:10/06/2023		
Duration Of Sampling	8 Hours		
Sample Collected By	Laboratory Chemist		
Sampling Procedure	As Per Method Reference		
Sample Quantity/Packing	GMF Filter Paper (8 X 10 Inch): 1x1 No.		

TEST REPORT				
Parameter	Unit	Result (SPM)	The Environment (Protection) Rules, 1986 Standard	Method Reference
Packing Plant	$\mu\text{g}/\text{m}^3$	1851	2000	EPA Method IO-2.1
Coal Yard Near Wagon Tippler	$\mu\text{g}/\text{m}^3$	1762		
TPP Area	$\mu\text{g}/\text{m}^3$	1671		
Coal Mill Line-2	$\mu\text{g}/\text{m}^3$	1541		
Near AFR Area	$\mu\text{g}/\text{m}^3$	1479		
Cement Mill Area	$\mu\text{g}/\text{m}^3$	1775		
Fly Ash Loading Area	$\mu\text{g}/\text{m}^3$	1803		
Coal Yard Near Cycle Stand	$\mu\text{g}/\text{m}^3$	1620		

Terms & conditions

- > The report for publication, arbitration or as the legal dispute is forbidden.
- > Test sample will be retained for 15 days after issue of test report unless otherwise agreed with the customer.
- > This is for information as the party has asked for the above test (s) only.

 REVIEWED BY		 AUTHORIZED SIGNATORY
---	---	--

-----End of the test report-----



Ultimate
ENVIROLYTICAL SOLUTIONS

HDD-272, PHASE III- NEAR JP CHOWN,
RING ROAD NO - 2, KAHIR NAGAR, RAIPUR, C.G. -492099
PH - 0771 - 4027777 / email - ultimatenviro@gmail.com

Form No.: UES/FORM/09

Name & Address of The Customer		MONTH OF SAMPLING	OCTOBER-2023 TO MARCH-2024
TO, AMBUJA CEMENT LIMITED (UNIT: BHATAPARA) P.O. Rawan, Tehsil: Baloda Bazar, Dist.: Baloda Bazar-Bhatapara-493331		TYPES OF REPORT	HALF YEARLY MONTHLY AVERAGE REPORT
SAMPLE DETAILS			
MONITORING FOR	NOISE LEVEL MONITORING		
CUSTOMER REF. NO. & DATE	2800956665/NE08, Date 10/06/2023		
SAMPLING LOCATION	BUFFER ZONE (OUTSIDE VILLAGE)		
SAMPLE COLLECTED BY	LABORATORY CHEMIST		
SAMPLING PROCEDURE	IS 9989:1981:RA 2001		

TEST REPORT					
LOCATION	UNIT	RESULT		LIMIT (RESIDENTIAL ZONE)	
		DAY TIME	NIGHT TIME	DAY TIME	NIGHT TIME
Residential Area				55	45
DEVIRANI VILLAGE	dB(A)	52.1	41.2		
KARMANDI VILLAGE	dB(A)	50.2	43.0		
MOPAR VILLAGE	dB(A)	52.0	42.3		
MALDI VILLAGE	dB(A)	50.5	40.9		
PARSADI VILLAGE	dB(A)	49.8	39.4		
MUDHIPAR VILLAGE	dB(A)	53.1	40.3		
KHAIRATAL VILLAGE	dB(A)	51.0	42.1		
SHADRAPALI VILLAGE	dB(A)	49.6	42.2		
ARJUNI VILLAGE	dB(A)	52.9	43.5		
RAWAN VILLAGE	dB(A)	51.4	40.2		
PAUSARI VILLAGE	dB(A)	53.0	43.1		
SHARSELI VILLAGE	dB(A)	50.6	42.4		

REMARKS: RESULTS ARE AS ABOVE

Terms & conditions

- > The report for publication, arbitration or as legal dispute is forbidden.
- > Test sample will be retained for 15 days after issue of test report unless otherwise agreed with customer.
- > This is for information as the party has asked for above test(s) only.

 REVIEWED BY	 For ULTIMATE ENVIROLYTICAL SOLUTIONS	 AUTHORIZED SIGNATORY
---	--	--

-----End of the test report-----



Ultimate
ENVIROLYTICAL SOLUTIONS

Formet No.: UES/FORM/09

HDD-272, PHASE III- NEAR JP CHOWK,
RING ROAD NO - 2, KAHIR NAGAR, RAIPUR, C.G. -492099
PH - 0771 - 4027777 /email - ultimatenviro@gmail.com

Name & Address of The Customer

TO,
AMBUJA CEMENT LIMITED
(UNIT: BHATAPARA)
P.O. Rawan, Tehsil: Baloda Bazar,
Dist: Baloda Bazar-Bhatapara-493331

MONTH OF SAMPLING

OCTOBER-2023 to MARCH-2024

TYPES OF REPORT

HALF YEARLY MONTHLY AVERAGE REPORT

SAMPLE DETAILS

MONITORING FOR	NOISE LEVEL MONITORING
CUSTOMER REF. NO. & DATE	2800956665/NE08, Date 10/06/2023
SAMPLING LOCATION	PLANT (CORE ZONE)
SAMPLE COLLECTED BY	LABORATORY CHEMIST
SAMPLING PROCEDURE	IS 9989:1981:RA 2001

TEST REPORT

LOCATION	UNIT	RESULT		LIMIT (INDUSTRIAL ZONE)	
		DAY TIME	NIGHT TIME	DAY TIME	NIGHT TIME
Industrial Area				75	70
NEAR TPP AREA	dB(A)	72.1	63.9		
AFR OFFICE	dB(A)	70.4	58.3		
NEW CCR BUILDING	dB(A)	70.0	68.1		
ROP AREA	dB(A)	73.4	65.5		

REMARKS: RESULTS ARE AS ABOVE

Terms & conditions

- > The report for publication, arbitration or as legal dispute is forbidden.
- > Test sample will be retained for 15 days after issue of test report unless otherwise agreed with customer.
- > This is for information as the party has asked for above test(s) only.

REVIEWED BY



For ULTIMATE ENVIROLYTICAL SOLUTIONS

AUTHORIZED SIGNATORY

-----End of the test report-----



Ultimate
ENVIROLYTICAL SOLUTIONS

HDD-272, PHASE III- NEAR JP CHOWK,
RING ROAD NO - 2, KABIR NAGAR, RAIPUR, C.G. -492099
PH - 0771 - 4027777 email - ultimatenviro@gmail.com

Formul No.: UES/FORM/09

Name & Address Of The Customer		MONTH OF SAMPLING	OCTOBER-2023 TO MARCH-2024
TO, AMBUJA CEMENT LIMITED (UNIT: BHATAPARA) P.O. Rawan, Tehsil: Baloda Bazar, Dist: Baloda Bazar-Bhatapara-493331		TYPES OF REPORT	HALF YEARLY MONTHLY AVERAGE REPORT
SAMPLE DETAILS			
MONITORING FOR	SOIL	CUSTOMER REF. NO. & DATE	2800956665/NE08, Date 10/06/2023
SAMPLING LOCATION	1. NEAR AFR AREA 2. NEAR AMBUJA COLONY		
SAMPLE COLLECTED BY	LABORATORY CHEMIST		
SAMPLING PROCEDURE	MANUAL ON SOIL, PLANT & WATER ANALYSIS		
SAMPLE QUANTITY/PACKING	3.0 KG (APPROX)		

TEST REPORT					
Sr. No	Parameter	Unit	Method Reference	Near AFR Area	Near Ambuja Colony
A. PHYSICAL PROPERTIES					
1	Gravel	%	AGRICULTURE SOIL MANUAL	10.16	10.21
2	Moisture	%	AGRICULTURE SOIL MANUAL	23.2	22.9
3	Texture	-	AGRICULTURE SOIL MANUAL	CLAY LOAM	CLAY LOAM
4	Bulk density	g/cm ³	AGRICULTURE SOIL MANUAL	1.3	1.4
PARTICLE SIZE DISTRIBUTION					
5	Sand	%	AGRICULTURE SOIL MANUAL	26.1	27.0
	Silt	%	AGRICULTURE SOIL MANUAL	23.4	25.1
	Clay	%	AGRICULTURE SOIL MANUAL	38.3	35.5
6	Permeability	cm/sec	AGRICULTURE SOIL MANUAL	10 ⁻²	10 ⁻⁷
7	Water Holding Capacity	%	AGRICULTURE SOIL MANUAL	25.3	26.2
B. CHEMICAL PROPERTIES					
8	pH (1:2.5 Aq. Extract) At 25°C	-	IS: 2720: (PART-26):1987 RA 2011	7.24	7.28
9	Electrical Conductivity (1:2.5 Aq. Extract)	µs/cm	IS: 14767:2000 RA 2016	232	239
10	Total Organic matter	%	AGRICULTURE SOIL MANUAL	3.21	3.14
11	Total Organic Carbon	%	AGRICULTURE SOIL MANUAL	1.20	1.22
12	Available Nitrogen (as N)	Kg/hect	AGRICULTURE SOIL MANUAL	231	220
13	Available Phosphorous (as P)	Kg/hect	AGRICULTURE SOIL MANUAL	34.6	36.3
14	Available Potassium (as K)	Kg/hect	AGRICULTURE SOIL MANUAL	141.0	138.2
15	Water soluble Sulphate (as SO ₄)	mg/Kg	AGRICULTURE SOIL MANUAL	90.5	101.1
16	Available Boron (B)	mg/Kg	AGRICULTURE SOIL MANUAL	BDL	BDL
17	Available Iron (Fe)	mg/Kg	AGRICULTURE SOIL MANUAL	0.18	0.23



Ultimate
ENVIROLYTICAL SOLUTIONS

HDD-272, PHASE III- NEAR JP CROWK,

RING ROAD NO - 2, KAHIR NAGAR, RAIPUR, C.G. -492099

PH - 0771 - 4027777 /email - ultimatenviro@gmail.com

Form No.: UES/FORM/06

TEST REPORT

Sr. No	Parameter	Unit	Method Reference	Near AFR Area	Near Ambuja Colony
18	Available Copper (Cu)	mg/Kg	AGRICULTURE SOIL MANUAL	0.29	0.27
19	Available Zinc (Zn)	mg/Kg	AGRICULTURE SOIL MANUAL	0.24	0.26
20	Available Manganese (Mn)	mg/Kg	AGRICULTURE SOIL MANUAL	0.27	0.24
21	Total Chromium (Cr)	mg/Kg	AGRICULTURE SOIL MANUAL	BDL	BDL
22	Molybdenum (Mo)	mg/Kg	AGRICULTURE SOIL MANUAL	BDL	BDL
23	Total Lead (Pb)	mg/Kg	AGRICULTURE SOIL MANUAL	1.24	1.20
24	Total Cadmium (Cd)	mg/Kg	AGRICULTURE SOIL MANUAL	BDL	BDL
25	Total Selenium (Se)	mg/Kg	AGRICULTURE SOIL MANUAL	BDL	BDL
26	Total Nickel (Ni)	mg/Kg	AGRICULTURE SOIL MANUAL	BDL	BDL

N.D.:-NOT DETECTED

REMARKS: RESULTS ARE AS ABOVE

Terms & conditions

- > The report for publication, arbitration or as legal dispute is forbidden.
- > Test sample will be retained for 15 days after issue of test report unless otherwise agreed with customer.
- > This is for information as the party has asked for above test(s) only.

REVIEWED BY



For ULTIMATE ENVIROLYTICAL SOLUTIONS

AUTHORIZED SIGNATORY

-----End of the test report-----



Ultimate
ENVIROLYTICAL SOLUTIONS

Format No.: UCS/FORM/09

HDD-272, PHASE III- NEAR JP CHOWK,
RING ROAD NO - 2, KAPRI NAGAR, RAIPUR, C.G. -492099
PH - 0771 - 1027777 / email - ultimateenviro@gmail.com

Name & Address Of The Customer		MONTH OF SAMPLING	OCTOBER-2023 to MARCH-2024
TO, AMBUJA CEMENT LIMITED (UNIT: BHATAPARA) P.O. Rawan, Tehsil: Baloda Bazar, Dist: Baloda Bazar-Bhatapara-493331		TYPES OF REPORT	HALF MONTHLY YEARLY REPORT
SAMPLE DETAILS			
MONITORING FOR	STACK EMISSION MONITORING		
CUSTOMER REF. NO. & DATE	2800956665/NE08, Date 10/06/2023		
SAMPLE COLLECTED BY	LABORATORY CHEMIST		
SAMPLING PROCEDURE	IS 11255 PART 1,2:1985 REAFFIRMED 2009; PART 3:2008		
SAMPLE QUANTITY/PACKING	TITRABLE: 1 X 1 NO.		

TEST REPORT

RAW MILLKILN LINE 01			COAL MILL LINE 01			COOLER LINE 01		
MONTH	UNIT	RESULT	MONTH	UNIT	RESULT	MONTH	UNIT	RESULT
OCTOBER	mg/Nm ³	17.50	OCTOBER	mg/Nm ³	16.9	OCTOBER	mg/Nm ³	16.71
NOVEMBER	mg/Nm ³	23.44	NOVEMBER	mg/Nm ³	16.19	NOVEMBER	mg/Nm ³	24.11
DECEMBER	mg/Nm ³	22.35	DECEMBER	mg/Nm ³	12.12	DECEMBER	mg/Nm ³	26.72
JANUARY	mg/Nm ³	24.12	JANUARY	mg/Nm ³	14.25	JANUARY	mg/Nm ³	27.18
FEBRUARY	mg/Nm ³	16.51	FEBRUARY	mg/Nm ³	15.75	FEBRUARY	mg/Nm ³	24.76
MARCH	mg/Nm ³	11.20	MARCH	mg/Nm ³	15.30	MARCH	mg/Nm ³	24.16

REMARKS: Results Are As Above

Terms & conditions

- > The report for publication, arbitration or as legal dispute is forbidden.
- > Test sample will be retained for 15 days after issue of test report unless otherwise agreed with customer.
- > This is for information as the party has asked for above test(s) only

 REVIEWED BY		For ULTIMATE ENVIROLYTICAL SOLUTIONS  AUTHORIZED SIGNATORY
---	---	--

-----End of the test report-----



Ultimate
ENVIROLYTICAL SOLUTIONS

HDD-272, PHASE III- NEAR JP CHOWN,
RING ROAD NO - 2, KAMR NAGAR, RAIPUR, C.G. -492009
PH - 0771 - 4927777 email - ultimatenviro@gmail.com

Name & Address Of The Customer		MONTH OF SAMPLING	OCTOBER-2023 to MARCH-2024
TO, AMBUJA CEMENT LIMITED (UNIT: BHATAPARA) P.O. Rawan, Tehsil: Baloda Bazar, Dist: Baloda Bazar-Bhatapara-493331		TYPES OF REPORT	HALF MONTHLY YEARLY REPORT
SAMPLE DETAILS			
MONITORING FOR	STACK EMISSION MONITORING		
CUSTOMER REF. NO. & DATE	2800956665/NE08, Date 10/06/2023		
SAMPLE COLLECTED BY	LABORATORY CHEMIST		
SAMPLING PROCEDURE	IS 11255 PART 1,2:1985 REAFFIRMED 2009; PART 3:2008		
SAMPLE QUANTITY/PACKING	TRIMBLE: 1 X 1 NO.,		

TEST REPORT

RAW MILL KILN LINE 02			COAL MILL LINE 02			COOLER LINE 02		
MONTH	UNIT	RESULT	MONTH	UNIT	RESULT	MONTH	UNIT	RESULT
OCTOBER	mg/Nm ³	11.2	OCTOBER	mg/Nm ³	17.4	OCTOBER	mg/Nm ³	19.61
NOVEMEER	mg/Nm ³	11.18	NOVEMBER	mg/Nm ³	14.16	NOVEMBER	mg/Nm ³	19.72
DECEMBER	mg/Nm ³	11.2	DECEMBER	mg/Nm ³	19.30	DECEMBER	mg/Nm ³	17.45
JANUARY	mg/Nm ³	9.70	JANUARY	mg/Nm ³	23.10	JANUARY	mg/Nm ³	18.15
FEBRUARY	mg/Nm ³	14.90	FEBRUARY	mg/Nm ³	25.23	FEBRUARY	mg/Nm ³	17.08
MARCH	mg/Nm ³	14.70	MARCH	mg/Nm ³	24.36	MARCH	mg/Nm ³	24.16

REMARKS: Results Are As Above

Terms & conditions

- > The report for publication, arbitration or as legal dispute is forbidden.
- > Test sample will be retained for 15 days after issue of test report unless otherwise agreed with customer.
- > This is for information as the party has asked for above test(s) only

 REVIEWED BY	 For ULTIMATE ENVIROLYTICAL SOLUTIONS	 AUTHORIZED SIGNATORY
---	--	--

-----End of the test report-----



Ultimate
ENVIROLYTICAL SOLUTIONS

Form No.: UES/FORM/09

HDD-272, PHASE III- NEAR JP CROWK,

RING ROAD NO - 2, KABIR NAGAR, RAIPUR, C.G - 492099

PH - 0771 - 4927777 | email - ultimatenviro@gmail.com

Name & Address Of The Customer

TO,
AMBUJA CEMENT LIMITED
(UNIT: BHATAPARA)
P.O. Rawan, Tehsil: Baloda Bazar,
Dist: Baloda Bazar-Bhatapara-493331

MONTH OF SAMPLING OCTOBER-2023 to MARCH-2024

TYPES OF REPORT HALF MONTHLY YEARLY REPORT

SAMPLE DETAILS

MONITORING FOR	STACK EMISSION MONITORING
CUSTOMER REF. NO. & DATE	2800956665/NE08, Date 10/06/2023
SAMPLE COLLECTED BY	LABORATORY CHEMIST
SAMPLING PROCEDURE	IS 11255 PART 1,2:1985 REAFFIRMED 2009; PART 3:2008,
SAMPLE QUANTITY/PACKING	THIMBLE: 1 X 1 NO.,

TEST REPORT

CEMENT MILL LINE 01			CEMENT MILL LINE 02			CEMENT MILL LINE 03		
MONTH	UNIT	RESULT	MONTH	UNIT	RESULT	MONTH	UNIT	RESULT
OCTOBER	mg/Nm ³	17.29	OCTOBER	mg/Nm ³	15.1	OCTOBER	mg/Nm ³	16.91
NOVEMBER	mg/Nm ³	16.12	NOVEMBER	mg/Nm ³	14.32	NOVEMBER	mg/Nm ³	13.42
DECEMBER	mg/Nm ³	18.85	DECEMBER	mg/Nm ³	22.94	DECEMBER	mg/Nm ³	18.19
JANUARY	mg/Nm ³	19.01	JANUARY	mg/Nm ³	23.16	JANUARY	mg/Nm ³	18.09
FEBRUARY	mg/Nm ³	19.10	FEBRUARY	mg/Nm ³	17.10	FEBRUARY	mg/Nm ³	16.15
MARCH	mg/Nm ³	19.88	MARCH	mg/Nm ³	14.10	MARCH	mg/Nm ³	12.16

REMARKS: Results Are As Above

Terms & conditions

- > The report for publication, arbitration or as legal dispute is forbidden.
- > Test sample will be retained for 15 days after issue of test report unless otherwise agreed with customer.
- > This is for information as the party has asked for above test(s) only

REVIEWED BY



For ULTIMATE ENVIROLYTICAL SOLUTIONS

AUTHORIZED SIGNATORY

-----End of the test report-----



Ultimate
ENVIROLYTICAL SOLUTIONS

HDD-272, PHASE III- NEAR JP CHOWK,
RING ROAD NO - 2, KABIR NAGAR, RAIPUR, C.G. -492099
PH - 0771 - 4027777 email - ultimatenviro@gmail.com

Form No.: UES/FORM/09

Name & Address Of The Customer		MONTH OF SAMPLING	OCTOBER-2023 to MARCH-2024
TO, AMBUJA CEMENT LIMITED (UNIT: BHATAPARA) P.O. Rawan, Tehsil: Baloda Bazar, Dist: Baloda Bazar-Bhatapara-493331		TYPES OF REPORT	HALF MONTHLY YEARLY REPORT
SAMPLE DETAILS			
MONITORING FOR	STACK EMISSION MONITORING		
CUSTOMER REF. NO. & DATE	2800956665/NE08, Date 10/06/2023		
SAMPLE COLLECTED BY	LABORATORY CHEMIST		
SAMPLING PROCEDURE	IS 11255 PART 1,2:1985 REAFFIRMED 2009; PART 3:2008,		
SAMPLE QUANTITY/PACKING	THIMBLE: 1 X 1 NO.,		

TEST REPORT

TPP 1 X 15 MW (OLD BOILER NO.01)			TPP15 MW (BOILER NO.02 & 03)			TPPBOILER04 (33 MW)		
MONTH	UNIT	RESULT	MONTH	UNIT	RESULT	MONTH	UNIT	RESULT
OCTOBER	mg/Nm ³	0	OCTOBER	mg/Nm ³	0	OCTOBER	mg/Nm ³	21.9
NOVEMBER	mg/Nm ³	0	NOVEMBER	mg/Nm ³	0	NOVEMBER	mg/Nm ³	22.41
DECEMBER	mg/Nm ³	0	DECEMBER	mg/Nm ³	0	DECEMBER	mg/Nm ³	18.65
JANUARY	mg/Nm ³	0	JANUARY	mg/Nm ³	0	JANUARY	mg/Nm ³	16.41
FEBRUARY	mg/Nm ³	0	FEBRUARY	mg/Nm ³	0	FEBRUARY	mg/Nm ³	15.45
MARCH	mg/Nm ³	0	MARCH	mg/Nm ³	0	MARCH	mg/Nm ³	16.51

REMARKS: Results Are As Above

Terms & conditions

- > The report for publication, arbitration or as legal dispute is forbidden.
- > Test sample will be retained for 15 days after issue of test report unless otherwise agreed with customer.
- > This is for information as the party has asked for above test(s) only

 REVIEWED BY	 For ULTIMATE ENVIROLYTICAL SOLUTIONS	 AUTHORIZED SIGNATORY
---	--	--

-----End of the test report-----



Ultimate
ENVIROLYTICAL SOLUTIONS

HDD-272, PHASE III- NEAR JP CHOWK
RING ROAD NO - 2, KAMHI NAGAR, RAIPUR, C.G. - 492009
PH - 0771 - 4027777, email - ultimatenviro@gmail.com

Name & Address Of The Customer

TO,
AMBUJA CEMENT LIMITED
(UNIT: BHATAPARA)
P.O. Rawan, Tehsil: Baloda Bazar,
Dist: Baloda Bazar-Bhatapara-493331

MONTH OF SAMPLING

OCTOBER-2023 to MARCH-2024

TYPES OF REPORT

HALF YEARLY MONTHLY AVERAGE REPORT

SAMPLE DETAILS

Sample Type	Waste Water	Customer Ref. No. & Date	2800956665/NE08 Date: 10/06/2023
Customer Sample ID	ETP ETP INLET/OUTLET		
Packing Of Sample	Jerry Can (2.5 ltr.*1) Glass bottle (300ml*1)	Sample Collected By	Laboratory Chemist
Other Details	Sealed	Quantity Received	Approx. 5.0 Liter.

TEST REPORT

SR. NO.	PARAMETER	UNIT	METHOD OF TEST	LIMITS AS PER TREATED WATER	ETP INLET (UNTREATED)	ETP OUTLET (TREATED)
1	pH Value at 25.0°C	-	IS:3025:(Part-11): 1983, RA 2012	5.5 To 9.0	7.58	7.43
2	Total Suspended Solid	mg/L	IS:3025:(Part-17): 1984, RA 2012	100	85.10	13.06
3	Total Dissolved Solids	mg/L	IS:3025:(Part-16)	-	2684.00	49.1
4	Chemical Oxygen Demand	mg/L	IS:3025:(Part-58):2006, RA 2012	250	241.00	40.1
5	Bio-chemical Oxygen Demand at 27°C for three day	mg/L	IS:3025:(Part-44):1993 RA 2014	30	71.20	12.02
6	Oil & Grease	mg/L	IS:3025:(Part-39):1986	10	Absent	Absent

Note:mg/lit.: milligram per liter. N.D.: Not Detected.

REMARKS: RESULTS ARE AS ABOVE

Terms & conditions

- > The report for publication, arbitration or as legal dispute is forbidden.
- > Test sample will be retained for 15 days after issue of test report unless otherwise agreed with customer.
- > This is for information as the party has asked for above test(s) only.

REVIEWED BY



For ULTIMATE ENVIROLYTICAL SOLUTIONS

AUTHORIZED SIGNATORY

-----End of the test report-----



Ultimate
ENVIROLYTICAL SOLUTIONS

HDD-272, PHASE III, NEAR JP CHOWK,

RING ROAD NO - 2, KAMR NAGAR, RAIPUR, C.G. - 492009

PH - 0771 - 4027777 : email - ultimatenviro@gmail.com

Name & Address Of The Customer

TO,
AMBUJA CEMENT LIMITED
(UNIT: BHATAPARA)
P.O. Rawan, Tehsil: Baloda Bazar,
Dist: Baloda Bazar-Bhatapara-493331

MONTH OF SAMPLING

OCTOBER-2023 to MARCH -2024

TITLES OF REPORT

HALF YEARLY MONTHLY AVERAGE REPORT

SAMPLER DETAILS

Sample Type	Waste Water	Customer Ref. No. & Date	2800956665/NE08, Date 10/06/2023
Customer Sample Id	NEW OCR STP INLET/OUTLET		
Packing Of Sample	Jerry Can (2.5 ltr.*1) Glass bottle (300ml*1)	Sample Collected By	Laboratory Chemist
Other Details	Sealed	Quantity Received	Approx. 5.0 Ltr.

TEST REPORT

SR. NO.	PARAMETER	UNIT	METHOD OF TEST	LIMITS AS PER TREATED WATER	STP INLET (UNTREATED)	STP OUTLET (TREATED)
1	pH Value at 25.0°C	-	IS:3025:(Part-11): 1983, RA 2012	5.5 To 9.0	7.44	7.32
2	Total Suspended Solid	mg/L	IS:3025:(Part-17): 1984, RA 2012	100	40.40	40.40
3	Total Dissolved Solids	mg/L	IS:3025:(Part-16)	-	281.20	271.20
4	Chemical Oxygen Demand	mg/L	IS:3025:(Part-58):2006, RA 2012	250	171.10	40.20
5	Bio-chemical Oxygen Demand at 27°C for three day	mg/L	IS:3025:(Part-44):1993 RA 2014	30	70.50	10.10
6	Oil & Grease	mg/L	IS:3025:(Part-39):1986	10	Absent	Absent

Note:mg/lit.: milligram per liter. N.D.: Not Detected.

REMARKS: RESULTS ARE AS ABOVE

Terms & conditions

- > The report for publication, arbitration or as legal dispute is forbidden.
- > Test sample will be retained for 15 days after issue of test report unless otherwise agreed with customer.
- > This is for information as the party has asked for above test(s) only.

REVIEWED BY



For ULTIMATE ENVIROLYTICAL SOLUTIONS

AUTHORIZED SIGNATORY

-----End of the test report-----



Ultimate
ENVIROLYTICAL SOLUTIONS

HDD-272, PHASE III - NEAR JP CHOWN,

RING ROAD NO - 2, KAMR NAGAR, RAIPUR, C.G. - 492009

PH - 0771 - 4027777 / email - ultimatenviro@gmail.com

Name & Address Of The Customer

TO,
AMBUJA CEMENT LIMITED
(UNIT: BHATAPARA)
P.O. Rawan, Tehsil: Baloda Bazar,
Dist: Baloda Bazar-Bhatapara-493331

MONTH OF SAMPLING

OCTOBER-2023 to MARCH-2024

TYPES OF REPORT

HALE YEARLY MONTHLY AVERAGE REPORT

SAMPLER DETAILS

Sample Type	Waste Water	Customer Ref. No. & Date	2800956665/NE08 Date 10/06/2023
Customer Sample Id	Ambuja Colony STP Inlet/Outlet		
Packing Of Sample	Jerry Can (2.5 ltr.*1) Glass bottle (300ml*1)	Sample Collected By	Laboratory Chemist
Other Details	Sealed	Quantity Received	Approx. 5.0 liter.

TEST REPORT

SR. NO.	PARAMETER	UNIT	METHOD OF TEST	LIMITS AS PER TREATED WATER	STP INLET (UNTREATED)	STP OUTLET (TREATED)
1	pH Value at 25.2°C	-	IS:3025:(Part-11): 1983, RA 2012	5.5 To 9.0	7.54	7.41
2	Total Suspended Solid	mg/L	IS:3025:(Part-17): 1984, RA 2012	100	139.10	39.20
3	Total Dissolved Solids	mg/L	IS:3025:(Part-16)	-	479.00	464
4	Chemical Oxygen Demand	mg/L	IS:3025:(Part-58):2006, RA 2012	250	140.10	35.10
5	Bio-chemical Oxygen Demand at 27°C for three day	mg/L	IS:3025:(Part-44):1993 RA 2014	30	43.10	10.9
6	Oil & Grease	mg/L	IS:3025:(Part-39):1986	10	Absent	Absent

Note:mg/lit.: milligram per liter. N.D.: Not Detected.

REMARKS: RESULTS ARE AS ABOVE

Terms & conditions

- > The report for publication, arbitration or as legal dispute is forbidden.
- > Test sample will be retained for 15 days after issue of test report unless otherwise agreed with customer.
- > This is for information as the party has asked for above test(s) only.

REVIEWED BY



For ULTIMATE ENVIROLYTICAL SOLUTIONS

AUTHORIZED SIGNATORY

-----End of the test report-----

कार्यालय वनमण्डलाधिकारी बलौदाबाजार वनमण्डल, बलौदाबाजार

Email :- dfo_balodabazar@rediffmail.com, 07727-296526

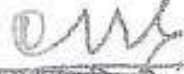
क्रमांक / तकनीकी / दिवस 1613
प्रति,

बलौदाबाजार, दिनांक 7/08/2022

- ✓ श्री. अम्बुजा सीमेंट लिमि.
(युनिट-भाटापारा)
ग्राम व पोस्ट रवान, तह. बलौदाबाजार
जिला बलौदाबाजार-भाटापारा (छ.ग.)
- विषय :- Submission of physical verification report of plantation and greensbelt development at Ambuja Cements Limited (Bhatapara Unit), Rawan Limestone mines & Malki Mopar Limestone mines.
- संदर्भ :- आपका पत्र क्रमांक / ACL / BYT / ENV / 2021-22 / 160 दिनांक 30.12.2021.

=== : 00 : ===

उपरोक्त विषयान्वित संदर्भित पत्र के तारतम्य में आपके द्वारा प्रस्तुत प्रतिवेदन अनुसार संयंत्र एवं माईन्स क्षेत्र का M/s Anacon Laboratories Pvt. Ltd. Nagpur (QCI-NABET Accredited EIA Consultant) द्वारा तैयार किए ग्रीनबेल्ट/प्लानटेशन प्रतिवेदन का भौतिक सत्यापन वनमण्डलाधिकारी बलौदाबाजार द्वारा किए जाने पर हरिपट्टी एवं वृक्षारोपण की स्थिति 33% से अधिक पारा गया है।


वनमण्डलाधिकारी
बलौदाबाजार वनमण्डल, बलौदाबाजार





**AMBUJA CEMENT FOUNDATION
CSR ACTIVITIES DURING THE YEAR
April 2023 to March 2024**



Highlights of Works

Programme/Activities	Achievement	Details of Activity
Agro Based Livelihood & Allied Activities		
Farmers covered under Kharif season through improved package of practices	350 farmers (350 acres)	Core Villages
Farmers trained on Kharif crop in Improved package of practice.	459 farmers	Core Villages
Farmers covered under Rabi season through improved package of practices	320 Farmers	Core Villages
Farmers trained on Rabi crop in Improved package of practice.	382 Farmers	Core Villages
Virtual workshop/trainings with Krishi Mitras on season wise crop planning and improved package of practices, Seed Bank, Natural Farming	6 Krishi Mitra	Core Villages
Training of farmers on Biofloc fish farming	21 farmers	Core villages
Demo plots promoted under Kharif and Rabi crop	148	Core village
Farmer's field day cum training in Kharif and Rabi	3515 farmers	Core villages
Support in no. of goats/sheep covered through treatment and ET vaccine	3769 goats	215 Households (139 HH in core villages and 76 in peripheral villages)
No. of farmers benefitted from custom hiring center with farm machinery	660 farmers	Core village
Support farmer producer company in it's functioning	1263 farmers	Core villages
No. of farmers supported for farm protection – fencing	60 farmers	Core villages
No of soil testing done	655 farmers	Core villages
Promoted Azola Culture & Mineral mixture under Animal Husbandry	50 farmers	Core villages
Promoted Goat manure making machine	1 group	Core village
MoU with district animal husbandry department for Artificial insemination promotion	13 village	Core village
Promoted Bio resource center	13 village	Core village

Women Empowerment		
No. of awareness sessions conducted on the concept of SHGs	19	Core Villages
No. of women participated in the awareness sessions	206	Core Villages
New SHG Formed	15	Core Villages
New Members added in SHGs	157	Core Villages
No. of SHGs Linked with Bank	102	Core Villages
Amount Received form Bank	210 Lakh	Core Villages
No. of Six Module Training	36	Core Villages
Turmeric Cultivation with SHG members	261	Core Villages
Area Covered in Turmeric Cultivation	8 Acer	Core Villages
Education		
Education Programme	5032 Students	Core Villages
Physical Education Programme	2106 Students (1002 Boys, 1104 Girls)	12 Schools in Core Villages
Reading Promotion	95 Students	3 school in core village
Students participated for district/stated level sports competition	24	All core village
Khel Utsav, Sports Event (10 Schools)	250 Participants (133 Girls and 117 Boys)	Core Villages
Under WASH Activity 1 Toilet Renovation and 1 Toilet Construction at Primary School	1 Toilet Renovation at Government P.S Pousri and 1 Toilet Construction at Government P.S Devrani	Core Villages
Sessions on Personal Hygiene	30 (547 students participated)	All core village
Session on Water Use Efficiency	4 (387 students participated)	All core village
Health		
MCH Program	100%	100% ANC/PNC mother have taken Iron Folic tablet and have registered within 1st trimester of their pregnancy. Institutional deliveries is up to 99%. Family planning counselling has been done among the eligible couple, where 16076 eligible couple used temporary family planning method and 127 have done Tubectomy and 6 have done vasectomy. Total 2069 Health Awareness program has been conducted on exclusive

		breast feeding and benefit of breast feeding where 100% of early and exclusive breast feeding has been done in our area.
NCD Program	525 health awareness program	Organized health marker days (World No tobacco day, world cancer day, world Heart day, World diabetes day, world Hypertension day) to sensitize the community as well as school children. 312 screening camp has been organized to identify the high risk individuals and 382 screening and awareness camp has been organized among the community on Cancer (cervical, breast and oral) with the support of BALCO cancer care hospital, Raipur.
Atmiyata Program	402 awareness program	Awareness programs has been conducted in the community to sensitize about the different social issues (domestic violence, unemployment etc) through Audio visual aids, in which 4880 community members took part.
APEKSHA and MHM Program	532 health awareness sessions	6236 adolescent girls have been provided absorbent and 1783 women have been provided absorbent. 10 Sanitary vending machines and 10 incinerators have been provided to schools as well as PHC.
NSF survey	382 awareness session have been conducted by sakhi in community level	358 first trimester pregnant ladies have been screened through baseline survey. The tobacco users have been followed up every month by

		sakhis
Malnutrition	1626 events have been conducted	Events have been conducted on early breastfeeding, immunization, complementary feeding, growth and development of child and importance of nutrition at 41 AWCs where 2317 participants took part. Developed Nutritional Garden under Ma Ganga model for the AWC children.
Community Clinic and Telemedicine	232 patients treated	Patient health cards has been developed for verification of case history of patients and initiating referrals. Health promotion and awareness activities are conducted to enhance behavior change communication and knowledge regarding risk factors. Telemedicine program started with health expert, Apollo hospital, Chennai.
Health and Safety	14 safety awareness programs has been conducted	Safety awareness programs has been conducted on domestic safety (fire, gas, electricity, medicine road, personal safety) by our safety ambassador (health sakhis). Specifically they have promoted for wearing helmet and taking safety measures while using gas or electricity.
Water Resource Management, Drinking Water& Rural Infrastructure Development		
Awareness session on drinking water	13	Core Villages
Total Participants in awareness session	243	Core Villages
RRWHS Constructed	100	Core Villages
RRWHS in the name of women	62	Core Villages
Potential capacity of HH level RRWHS	172.79 m3	Core Villages
Doha/ponds revived	7	Core Villages

No. of check dams constructed/revived	3	Core Villages
Potential capacity of water structures created through construction	214229 m3	Core Villages
Skill Development		
Training Batch Completed	22 Batches	
Total No. of Trainee Enrolled	578	
Trainee Trained	414	
Trainee Placed	291	
Total number of safety session	22	
Total candidate attended safety session	414	
Total Awareness session (Tobacco, use sanitary napkins, Menstrual Cycle,jal yatra,Health awareness,)	22	
Financial Literacy session	22 Session (1 sesion in a Batch)	Financial literacy session conducted by SBI at SEDI,Bhatapara.
Career Guidance program	414	
Different programmed & activities conducted like (Kargil Vijay Diwas, Republic Day, Women's Day, International Earth Day, World Safety Day For Safety And Health, World Environment Day, International Yoga Day, World Youth Day)	All enrolled candidates participated during the activity & celebration	Day wise programmed conducted
Organized Raipur Chapter Alumni Meet by SEDI Bhatapara.	Approx. 150 candidates participated	
Organized guest lecture in virtual class from different SEDI locations for domains, Electrical, Retail, Mason, Beautician and soft skill, welder & EDP	Each batch	Through online internal and External Guest
Innovated Virtual E- Pamphlet, and online Registration form Google Form for mobilization, Physical mobilization ,Door to door, Road show	Got 755 Inquiry from mobilization activity	
Online assessment	1504	4 Assessment per batch
Parents meeting Participation	494	Each batch

Financial Statement

AMBUJA CEMENT FOUNDATION – Bhatapara		
EXPENSES DETAIL FROM 01-04-2023 to 31.03.2024		
S.NO	ACTIVITIES	ADANI SPEND
1	EDUCATION DEVELOPMENT	2401045
2	WATER RESOURCE MANAGEMENT	9656847
3	HEALTH DEVELOPMENT	5012090
4	WOMEN ENPOWERMENT	2093481
5	INFRASTRUCTURE	21612916
6	AGRO BASED ACTIVITIES	5078547
7	SKILL TRAINING	7470463
8	Community Development & Welfare Expenses	1493996
9	ESTABLISHMENT	2218902
	TOTAL=	57038287

Activity Photographs

Agriculture



SRI Plot of Paddy



Soil Testing Kit



Goat Shed



Goat Manure Production



Farmers Training Kharif



FPO Farmers Training



Farmer Producer Company Promoted



Annual General Meeting of FPO

Women Empowerment Programme



SHG Credit Linkages



IGA Bamboo Making



Group IGA



Turmeric IGA



SHG Training

Education



Hand Wash Session



Reading Session



Sports Events conducted at Village Government M.S School Mopar (8th& 9th Feb 2024

Health and Sanitation



Specialty Camp



No Tobacco Campaign



Nutrition Sessions



Yoga Sessions with Adolescent Girls



MHM Session



Awareness Session

Water&Rural Infrastructure Development



Magarway Pond



Pachri Construction



RRWHS Constructed



Water Awareness Session

Skill Development Programme



Practical Training



Guest Visits at SEDI



Alumni Chapter Inauguration at Raipur Chhattishgarh



Alumni Meet

Annexure V

List of Environmental Expenditure incurred existing for the Environmental Protection (Cost in Lacs.) Cement Plant October 2023- March 2024

Sr.No	Particulars	Cost In Lacs.
1	ESP Maintenance	57.8
2	Bag filter Maintenance	31.7
3	Environment Monitoring	12.2
4	STP,ETP Operation & Maintenance	7.0
6	Sweeping Machine Maintenance	7.4
7	Water Audit Plant & Mines	3.1
8	ETP RO Plant	17.1
9	Noise Control Management	111.3
9	Green Belt Development	28.2
10	Captive Power Plant ESP Maintenance	34.1
11	CPP Bag filter Maintenance	0.4
Total		310.1

ACL BHATAPARA _Half Yearly EC Compliance Report Cement Plant _ April 2023 - Sept 2023**Subash Awasthy <subhash.awasthi@adani.com>**

Mon 27/11/2023 18:17

To: IRO Raipur <iro.raipur-mefcc@gov.in>

Cc: cpcb.bhopal@gmail.com <cpcb.bhopal@gmail.com>; ecompliance-cg@gov.in <ecompliance-cg@gov.in>; Head Office CECB (hocecb@gmail.com) <hocecb@gmail.com>; Regional Officer (rocecbraipur2014@gmail.com) <rocecbraipur2014@gmail.com>; Sanjay Prasad <Sanjay.Prasad@adani.com>; Mohit Kumar Chauhan <MohitKumar.Chauhan@adani.com>; Sheeba Khan <sheeba.khan@adani.com>

 2 attachments (15 MB)

ACL BHATAPARA _Half Yearly EC Compliance Report Cement Plant _ April 2023 - Sept 2023.pdf.pdf; ACL BHATAPARA _Half Yearly EC Compliance Report Cement Plant Line 3 _ April 2023 - Sept 2023 .pdf.pdf;

Dear Sir,

Please find enclosed herewith Half yearly EC Compliance Report of stipulated conditions along with Monthly Environmental Monitoring Report for the period (April 2023 to September 2023) Ambuja Cements Ltd. Bhatapara integrated Cement Plant and Line 3 Cement Plant . Copy of same will be uploaded on the company & MOEFCC website shortly .

This is for your kind information and record please.

Regards**SUBHASH AWASTHI****Deputy General Manager (Environment & Sustainability)**

I Ambuja Cements Limited I Rawan Village I Balodabazar District I

I Chhattisgarh I Pin - 493331 I

I Mobile- +91-8982073666 I Email – subhash.awasthi@adani.com I www.adani.com IGrowth
with
Goodness

Our Values: Courage | Trust | Commitment

 /AdaniOnline

**Ambuja
Cement**

प्रति,

- 1- अध्यक्ष,
जिला पंचायत रायपुर
- 2- अध्यक्ष,
नगरपालिका परिषद बलीदाबाजार
- 3- कार्याध्यक्ष,
ग्राम पंचायत बकान, बलावाली, पीरारी, कुकुर
सहसील बलीदाबाजार जिला रायपुर छगन

माननीय महोदय,

अम्बुजा सीमेंट लिमिटेड बकान के अग्रावेदन पर आप
यन मंत्रालय नई दिल्ली ने अपने पत्र दिनांक 13 मई 2011 द्वारा नि-
कारण के फलस्वरूप उत्पादन क्षमता 1.8 एम्बीटीपीपीएच में वृद्धि करके
बकान की अनुमति प्रदान की है कि निम्नानुसार कम्पनी द्वारा पर्या-
ज का पालन किया जावेगा।

इस संदर्भ में निर्देशानुसार भारत शासन पर्यावरण ए-
की प्रतिकृति इस पत्र के साथ आपकी जानकारी के लिए संलग्न

दिनांक - 13/5/2011

यारसे

संलग्न - पर्यावरण एवं यन मंत्रालय भारत

अम्बुजा सि

शासन का पत्र दिनांक 13/5/2011

Control Certificate Date- 03-06-2009



पर्यावरण Date- 03-06-2009



Annexure VIII



Raw Material Transported Covered

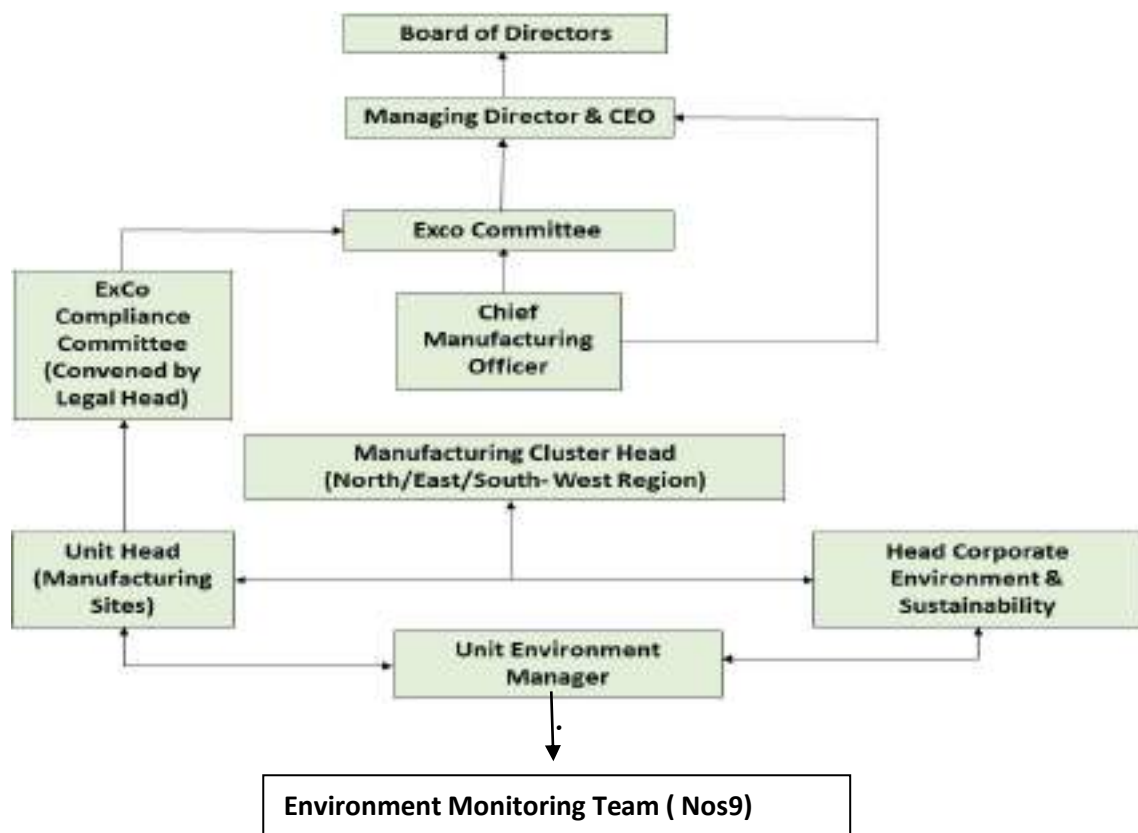
Annexure - IX

ENVIRONMENTAL MANAGEMENT CELL (EMC)

In order to maintain the environmental quality within the standards, regular monitoring of various environmental components is necessary. M/s.Ambuja Cements Ltd. Is maintaining/ will maintain a full-fledged Environmental Management Cell (EMC) for environmental monitoring and management. The EMC team is responsible for pollution monitoring aspects and implementation of control measures in the plant .A group of qualified and efficient engineers with technicians has been deputed for maintenance, up keeping and monitoring of the pollution control equipment, to keep them in working at the best of their efficiencies.

Structure of EMC

Structure of Environment Management Cell at M/s. Ambuja Cements Ltd.



Structure of EMC at M/s. Ambuja Cements Ltd.

Annexure - IX

Responsibilities of EMC

The EMC looks after and implement the various functions to ensure that environmental status of the area remains within the statutory standard of MOEFCC and SPCB. The responsibilities of the EMC include the following:

- ⌘ Procurement and commissioning of Pollution Control/Monitoring Equipment.
- ⌘ Environmental monitoring of the core and buffer zone and evaluation of results. Keeping of records to track the surrounding environment quality status.
- ⌘ Timely Calibration of Pollution Control Equipment and facilities.
- ⌘ Specification and regulation of maintenance schedules for Pollution Control Equipment.
- ⌘ Ensuring that prescribed standards are maintained.
- ⌘ Implementation of the mitigation measures as suggested in EIA/EMP Report.
- ⌘ Ensuring greenbelt development/plantation & its maintenance.
- ⌘ Compliance with guidelines and statutory requirements.
- ⌘ Coordination with statutory bodies, functional groups of the unit, Corporate Project / Environment & Engineering department etc.
- ⌘ Organizing meetings of the Environmental Management Committee.
- ⌘ Interaction with engineering & operation team for implementation of any modification programmes intended to improve the availability / efficiency of pollution control devices / systems.
- ⌘ Carry out proactive environmental studies and observe all precautions necessary to avert disasters and emergencies in the mining observations as well as nearby areas.
- ⌘ Regular environmental review and performance appraisal (Internal) and organizing Environmental / Energy and Water Audits by independent agencies/ 3rd party agencies.
- ⌘ Coordination with the vendors dealing in waste supplies and disposal.
- ⌘ Ensuring that the waste handling and disposal is carried out as per prescribed conditions.
- ⌘ Conducting regular training programmes on various environmental requirements especially sustainable development, climate change, environmental monitoring etc.
- ⌘ Reporting of compliances and non-compliances (if any) to management and other stakeholders.


Environmental Statement of Cement Plant Bhatapara

Subash Awasthy <subhash.awasthi@adani.com>

Thu 14/09/2023 16:42

To:Regional Officer (rocecbraipur2014@gmail.com) <rocecbraipur2014@gmail.com>

Cc:Head Office CECB (hocecb@gmail.com) <hocecb@gmail.com>

 1 attachments (3 MB)

ACL Bhatapara _Environmental Statement Cement Plant _2022-2023.pdf;

Dear Sir,

Please find here with Environmental Statement report for the year 2022-2023 of the Integrated Cement Plant Bhatapara for your kind information further record please. Hope same will be find in order.

Regards

SUBHASH AWASTHI

Deputy General Manager (Environment & Sustainability)

I Ambuja Cements Limited I Rawan Village I Balodabazar District I

I Chhattisgarh I Pin - 493331 I

I Mobile- +91-8982073666 I Email – subhash.awasthi@adani.com I www.adani.com I

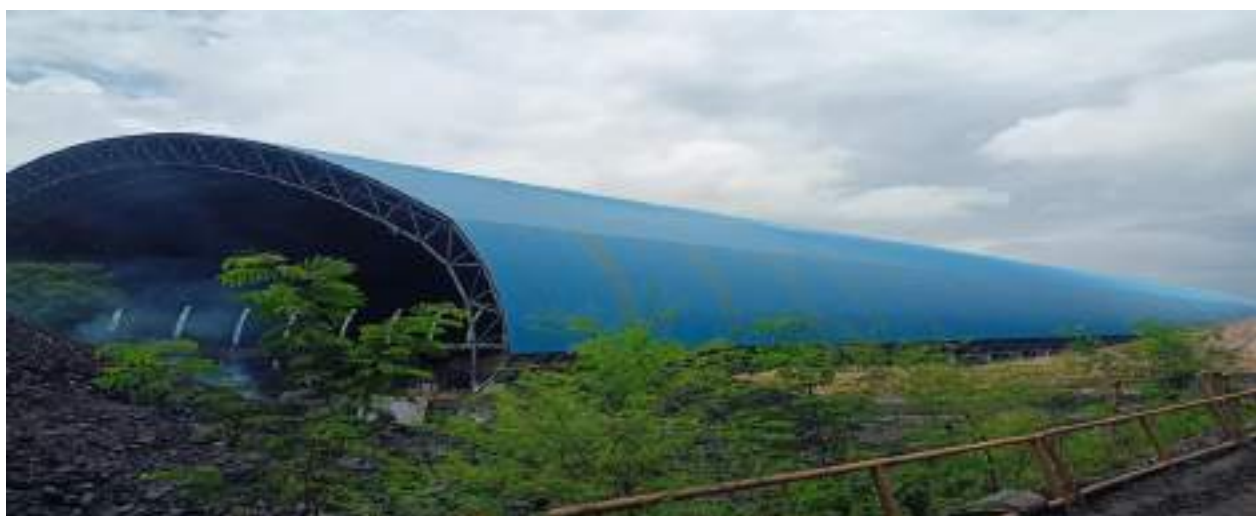
adani

Growth
with
Goodness

Our Values: Courage | Trust | Commitment



Annexure XI



Typical View of Coal and other raw material shed commissioned



Typical View of Limestone stockpile 2 material shed commissioned



Typical View of Limestone stockpile 1 material shed commissioned