

Ambuja Cement

Ref: ACL/BYT/ENV/2021-22/85

Date: 28.05.2021

To,

The Regional Officer,

Integrated Regional office,

Ministry of Environment, Forest & Climate Change, Aranya Bhawan, North Block,

Sector-19, Naya Raipur, Atal Nagar,

Chhattisgarh - 492002.

Sub: Submission of Half Yearly Environment Clearance Compliance Report along with Environmental Monitoring Report for the period **Oct 2020 to Mar 2021** for Cement Plant Complex of Ambuja Cements Ltd (Unit-Bhatapara), Chhattisgarh.

- Ref:**
1. EC letter no. J-11011/289/2005-IA II (I) dated 6th January 2006.
 2. EC letter no. J-11011/355/2005-IA II (I) dated 13th April 2007.
 3. EC letter no. J-11011/539/2008-IA II (I) dated 23th December 2008.
 4. EC letter no. J-11011/72/2009-IA II (I) dated 15th May 2009.
 5. EC letter no. J-11011/72/2009-IA II (I) dated 13th May 2011.
 6. EC letter no. J-11011/355/2005-IA II (I) dated 25th Jan 2016.

Dear Sir,

Please find the enclosed herewith the six monthly Environment Clearance compliance report along with Monthly Environmental Monitoring report from **Oct 2020 to Mar 2021**, for Cement Plant Complex of Ambuja Cements Ltd (Unit-Bhatapara), at Village & Post office-Rawan, Distt. Balodabazar, Chhattisgarh.

This is for your kind information and record please.

Thanking you.

Yours faithfully,

For Ambuja Cements Limited,

(Unit: Bhatapara)


(A V N V S Murthy)

Unit Head

Encl.: Six Monthly Environment Clearance compliance report along with Environment Monitoring report.

Copy to:

1. Central Pollution Control Board, Zonal Office, Sahkar Bhawan, North T.T. Nagar, Bhopal -462003.
2. The Member Secretary, Chhattisgarh Environment Conservation Board, Paryavas Bhavan, North Block Sector-19, Atal Nagar (C.G.) 490099.
3. The Regional Officer, CECB, Kabir Nagar Commercial Complex, Chhattisgarh Housing Board Colony, Kabir Nagar, Raipur (C.G.)

AMBUJA CEMENTS LIMITED

(Unit - Bhatapara)

Vill & PO. : Rawan, Tehsil Balodabazar, Dist.: Baloda, Bazar-Bhatapara, Chhattisgarh- 493 331

Ph.: 07727-220010 to 15, Fax: 077277220004

CIN: L2694GJ1981PL004717, Website: www.ambujacement.com

Regd. Office: PO: Ambuja Nagar, Taluka: Kodinar, District: Gir Somnath,, Gujarat, 362715

ENVIRONMENT CLEARANCE COMPLIANCE REPORT
For
(Oct.2020 to March.-2021)

OF



M/S AMBUJA CEMENTS LTD.
(UNIT-BHATAPARA)

P.O.: RAWAN, DIST.: BALODA BAZAR - BHATAPARA
CHHATTISGARH - 493331

1. EC letter no. J-11011/289/2005-IA II (I) dated 6th January, 2006.
2. EC letter no. J-11011/355/2005-IA II (I) dated 13th April, 2007.
3. EC letter no. J-11011/539/2008-IA II (I) dated 23rd December, 2008.
4. EC letter no. J-11011/72/2009-IA II (I) dated 15th May, 2009.
5. EC letter no. J-11011/72/2009-IA-II (I) dated 13th May, 2011.
6. EC letter no. J-11011/355/2005-IA II (I) dated 25th Jan, 2016.

Compliance of the conditions stipulated in the environmental clearance accorded by MOEFCC for production enhancement from 1.2 MTPA TO 1.8 MTPA cement production.

Ref. No. J-11011/289/2005-IA II (I), Date: 6th January 2006

Sr. No.	EC Conditions	Compliance Status
A. Specific Conditions		
i.	<p>The gaseous and particulate matter emissions from various units should conform to the standards prescribed by the State Pollution Control Board. At no time the particulate emissions from the cement plant and captive power plant (CPP) shall exceed 50 mg/Nm³. Regular lime injection at Circulating Fluidized Bed Combustion (CFBC) boiler must be ensured to reduce SO₂ emissions. NO_x burners should be installed to control NO_x emissions. Continuous on-line monitors for particulate emissions will be installed. Interlocking facility should be provided in the pollution control equipment so that in the event of the pollution control equipment not working, the respective unit (s) is shut down automatically.</p>	<p>Complied</p> <p>Cement Plant and Captive Power Plant are equipped with pollution control equipments (i.e. Bag filters, Glass Bag House & ESP) of adequate capacity to achieve Particulate Matter emission as per the new Notification dated 10th May, 2016. Regular lime injection at boiler to reduce SO₂ emissions and Low NO_x burner has been installed to reduce the NO_x emission as per the new Notification dated 10th May, 2016.</p> <p>CEMS (PM, SO₂ & NO_x) has been installed in cement plant and Power Plant and connectivity provided to CPCB, New Delhi and CECB Atal Nagar. Interlocking system is provided in pollution control equipments. CEMS data of Cement Plant Line-I&II can be seen on URL- http://rtdms.cpcb.gov.in/industry-login and CEMS data of CPP can be seen on URL- http://rtdms.cpcb.gov.in/industry-login Photographs of Pollution control equipment's are shown in Annexure I. Cement plant stacks monitoring report enclosed as Annexure II</p>
ii.	<p>Ambient air quality including ambient noise levels must not exceed the Stipulated under EPA or by the State authorities. Monitoring of ambient air Quality and stack emissions shall be carried out regularly in consultation with CECB and report submitted to the Board quarterly and to the Ministry's Regional Office at Bhopal half- yearly. Continuous stack monitoring system Should be installed.</p>	<p>Complied</p> <p>4 CAAQMS (Real Time Sampling & Analyses) have been installed with consultation of CECB and result can be seen on URL-http://www.envsaindia.com/cpcb/industry.php Manual ambient air quality monitoring as per CPCB is being done in the core and buffer zone. CEMS has been installed in all the stacks and its connectivity given to CPCB and CECB.</p>

Sr. No.	EC Conditions	Compliance Status
		Manual AAQM & Noise monitoring reports enclosed as Annexure III .
iii.	The company shall install adequate dust collection and extraction system to control fugitive dust emissions at various transfer points. Glass bag house in raw mill and kiln, ESP in cooler and cement mill and bag filter at all the transfer points shall be installed. Coal and clinker storage will be in the form of stockpile. The dust collected from the pollution control equipment shall be recycled back into the process. Storage of raw material shall be in closed roof sheds. Water sprinkling arrangement shall be made in the raw material stock yard and cement bag loading areas.	<p>Complied</p> <p>Adequate dust collection and extraction system are installed at various transfer points to control fugitive dust.</p> <p>Glass bag house in raw mill and ESP in kiln, cooler & cement mill. Bag filter at all the transfer points are installed. Coal and clinker storage are in the form of stockpile under covered shed. The dust collected from the pollution control equipment is recycled into the process. Storage of raw material is in closed roof sheds.</p> <p>Regular water sprinkling is being done in the raw material stock yard and loading area. Fugitive monitoring report enclose as Annexure-IV</p>
iv.	All the recommendations of the Corporate Responsibility for Environmental Protection (CREP) shall be followed and existing ESP in cement mill I and II and bag filters in raw mill and kiln, and crusher area shall be modified to achieve 99.95% efficiency and particulate emission levels less than 50 mg/Nm ³ .	<p>Complied.</p> <p>CREP guidelines are being followed. Cement Plant and Captive Power Plant are equipped with dust extraction system (Bag filters, Glass Bag House & ESP) of adequate capacity to achieve particulate matter emission as per the new Notification dated 10th May, 2016.</p> <p>CEMS data of Cement Plant Line-I&II can be seen on URL- http://rdms.cpcb.gov.in/industry-login and CEMS data of CPP can be seen on URL - http://rdms.cpcb.gov.in/industry-login</p> <p>Photographs of control equipment's are shown in Annexure I.</p> <p>Cement and CPP manual stacks Monitoring results for the period of October 2020 to March 2021 are given in Annexure II</p>
v.	No effluent shall be discharged from the process outside the premises and all the treated effluent from	<p>Complied.</p> <p>We have adapted Zero discharge, No effluent is discharged from the process outside the plant</p>

Sr. No.	EC Conditions	Compliance Status
	CPP and STP shall be utilized for green belt development and other plant related activities.	premises. No effluent is generated from cement plant. Treated effluent from CPP and Waste water treated in STP which further used for Other plant activities & green belt development. Treated effluent from TPP is used for dust suppression and recycled in the TPP process.
vi.	The company must harvest the rainwater from the roof tops and storm water drains to recharge the ground water. The company must also collect rain water in the mined out pits of captive lime stone mine and use the same water for the various activities of the project to conserve fresh water.	Complied. Roof tops rain water and storm water drains to recharge the ground water, rain water that gets collected in the mined out pit is used for various activities after proper settling. Rain water harvesting system has been constructed in colony and in nearby villages.
vii.	Green belt shall be developed in 33% of the plant area. Central Pollution Control Board guidelines must be followed in planning and developing green belt and selection of species etc.	Complied. We have developed more than 33% dense green belt within the plant premises. Photographs of Plantation & Certificate shown in Annexure V .
viii.	Solid waste generated in the form of fly ash and slag shall be 100% recycled in the process itself.	Complied. Fly ash generated from TPP is 100% utilized in cement manufacturing. Whereas slag from other industries are also being used for making slag cement.
ix.	The company shall undertake eco-development measures including community welfare measures in the project area.	Complied. Community welfare activities are being conducted in the nearby villages through Ambuja Cement Foundation (ACF).
B. General Conditions		
i.	The project authority must adhere to the stipulations made by Chhattisgarh Environment Conservation Board (CECB) and State Government.	Noted and Complied
ii.	No further expansion or modification of the plant should be carried out without prior approval of this ministry.	Noted. No further expansion or modification will be done without prior approval of ministry.
iii.	At least four ambient air quality monitoring stations should be established in the downward direction as well as where maximum ground level concentration of SPM, SO ₂ and NO _X are anticipated in consultation with the CECB. Data on ambient air	Complied Complied 4 CAAQMS (Real Time Sampling & Analyses) has been installed with consultation of CECB and

Sr. No.	EC Conditions	Compliance Status
	quality and stack emissions should be regularly submitted to this Ministry including its Regional Office at Bhopal and CECB /CPCB once in six months.	<p>result can be seen on URL-http://www.envsaindia.com/cpcb/industry.php. Manual ambient air quality monitoring as per CPCB is being done in the core and buffer zone. CEMS has been installed in all the stacks and its connectivity given to CPCB and CECB. Manual AAQM & Noise monitoring reports enclosed as Annexure III. CEMS data of Cement plant Line I&II can be seen on URL- http://rtcms.cpcb.gov.in/industry-login and CEMS data of CPP can be seen on URL - http://rtcms.cpcb.gov.in/industry-login Six months monitoring submitted along with EC Compliance to CECB and CPCB regional office.</p>
iv.	Industrial waste water should be properly collected, treated so as to conform to the standards prescribed under GSR 422 (E) dated 19th May, 1993 and 31st December, 1993 or as amended from time to time. The treated wastewater should be utilized for plantation purpose.	<p>Complied. Industrial waste water properly collected, treated as per the standards prescribed. The treated waste water from the treatment plant is used for the purpose of dust suppression and also recycled in TPP process. Monitoring results for the period October 2020 to March 2021 enclosed as Annexure III.</p>
v.	The overall noise levels in and around the plant area should be kept well within the standards (85 dBA) by providing noise control measures including acoustic hoods, silencers, enclosures etc. on all sources of noise generation. The ambient noise levels should conform to the standards prescribed under Environmental (Protection) Act, 1986 Rules, 1989 viz. 75 dBA (day time) and 70 dBA (night time).	<p>Complied. Noise control measures including acoustic hoods, silencers, enclosures etc. are applied at various noise generating sources. The ambient noise level monitoring carried out in core and buffer zone, report is enclosed as Annexure III</p>
vi.	Proper housekeeping and adequate occupational health programmes must be taken up. Occupational Health Surveillance programme should be done on a regular basis and records maintained. The programme must include lung function and sputum analysis tests once in six months.	<p>Complied. Regular housekeeping is being performed. Occupational health program is in place, as a part of that pre medical and periodic medical check-up of employee is being performed, which includes lung function test and sputum analysis tests once in six</p>

Sr. No.	EC Conditions	Compliance Status
		months. Records are maintained at Health Department.
vii.	The project proponent shall also comply with all the environmental protection measures and safeguards recommended in the Environmental Impact Assessment/Environmental Management Plan.	Noted and Agreed. Environmental protection measures suggested in the EIA/EMP report are duly implemented in the plant.
viii.	A separate environmental management cell with full-fledged laboratory facilities to carry out various management and monitoring functions should be set up under the control of Senior Executive.	Complied Environmental Management Cell has been established under supervision of Environmental Head with laboratory facilities. Environmental monitoring is being carried out through MOEFCC & NABL accredited laboratories. Head of Environment is directly reporting to plant head.
ix.	The project authorities will provide adequate funds both recurring and non-recurring to implement the conditions stipulated by the Ministry of Environment and Forests as well as the State Government along with the implementation schedule for all the conditions stipulated herein. The funds so provided should not be diverted for any other purposes.	Agreed and being complied. State of the art environmental protection measures have been implemented in the plant facilities. Necessary funds are allocated for implementation and maintenance of the environmental protection measures to control pollution within permissible limits. Fund is enclosed as Annexure-VI
x.	The Regional Office of this Ministry at Bhopal / CPCB / CECB will monitor the stipulated conditions. A six monthly compliance report and the monitored data along with statistical interpretation should be submitted to them regularly.	Complied. Regular six monthly compliance report and monitoring data is submitted to MoEFCC, CECB & CPCB. Last EC compliance report was submitted by mail Copy is enclosed Annexure-VII
xi.	The Project Authorities should inform the Regional Office as well as the Ministry, the date of financial closure and final approval of the project by the concerned authorities and the date of commencing the land development work.	Noted and Complied.
xii.	The Project Proponent should inform the public that the project has been accorded environmental clearance by the Ministry and copies of the clearance letter are available with the CECB / Committee and may also be seen at Website of the Ministry of Environment and Forests at http://envfor.nic.in . This should be advertised within seven days from the date	Complied.

Sr. No.	EC Conditions	Compliance Status
	of issue of the clearance letter at least in two local newspapers that are widely circulated in the region of which one shall be in the vernacular language of the locality concerned and a copy of the same should be forwarded to the Regional office.	
3.	The Ministry or any competent, authority may stipulate any further condition(s) on receiving reports from the project authorities. The above conditions will be monitored by the Regional Office of this Ministry located at Bhopal.	Noted
4.	The Ministry may revoke or suspend the clearance if implementation of any of the above mentioned conditions is not satisfactory.	Noted
5.	Any other conditions or alteration in the above conditions will have to be implemented by the project authorities in a time bound manner.	Noted
6.	The above conditions will be enforced, inter-alia under the provisions of the Water (Prevention and Control of Pollution) Act, 1974 the Air (Prevention and Control of Pollution) Act, 1981 the Environment (Protection) Act, 1986 and the Public Liability Insurance Act, 1991 along with their amendments and rules.	Noted

Compliance of the conditions stipulated in the environmental clearance given by ministry of environment and forests for 2.72 MTPA new clinker production unit (2.72MTPA) along with thermal power plant (15 mw) and captive power plant(33 mw). Ref. no. J-11011/355/2005-ia ii (i), date: 13th April 2007

Sr. No.	EC Conditions	Compliance Status
A. Specific Conditions		
i.	The gaseous and particulate matter emission from various units shall conform to the standards prescribed by the Chhattisgarh Environment Conservation Board(CECB). At no time, the particulate emission from the cement plant shall exceed 50 mg/Nm ³ . The emission from CPP shall be less than 100 mg/Nm ³ . Continuous online stack monitoring facilities for all the stacks and adequate air pollution control system shall be provided to keep emission levels below 50 mg/Nm ³ and on-line data shall be submitted to the CECB and CPCB regularly. Interlocking facility shall be provided in the pollution control equipment so that in the event of the pollution control equipment not working, the respective unit(s) is shut down automatically.	<p>Complied</p> <p>Cement Plant and Captive Power Plant are equipped with pollution control equipments (i.e. Bag filters, Glass Bag House & ESP) of adequate capacity to achieve Particulate Matter emission as per the new Notification dated 10th May, 2016. Regular lime injection at boiler to reduce SO₂ emissions and Low NO_x burner has been installed for reduce the NO_x emission as per the new Notification dated 10th May,2016.</p> <p>CEMS (PM, SO₂ & NO_x) has been installed in cement plant and Power Plant and connectivity provided to CPCB, New Delhi and CECB Atal Nagar. Interlocking system is provided in pollution control equipments. CEMS data of Cement plant Line I&II can be seen on URL- http://rtdms.cpcb.gov.in/industry-login CEMS data of CPP can be seen on URL - http://rtdms.cpcb.gov.in/industry-login Id- environmentalappl@ambuja.com ind@ambujacement.com (Photographs of pollution control equipment's are shown in Annexure I. Cement and CPP manual stacks Monitoring results for the period of October 2020 to March 2021 are given in Annexure II</p>
ii.	Ambient air quality including ambient noise levels shall not exceed the standards stipulated under EPA or by the State authorities Monitoring of ambient air quality and stack emissions shall be carried out regularly in consultation with CECB and report submitted to CECB quarterly and to the Ministry's Regional Office at Bhopal half-yearly. One ambient	<p>Complied</p> <p>4 nos. real time CAAQMS have been installed with consultation of CECB and result can be seen on URL- http://www.envsa.india.com/cpcb/industry.php Regular ambient air quality monitoring in core and buffer zone at ten locations is being done. Continuous stack monitoring system has been installed. Manual AAQM report enclosed as Annexure III.</p>

Sr. No.	EC Conditions	Compliance Status
	air quality monitoring station shall be installed in downwind direction.	
iii.	<p>The company shall install adequate dust collection and extraction system to Control fugitive dust emissions at various transfer points, raw mill handling (unloading, conveying, transporting, stacking), vehicular movement bagging and packing areas etc. ESP to AFBC boilers, clinker cooler and glass bag house to the raw mill/kiln system shall be provided to control air emission less than 50 mg/Nm³ from all the sources except CPP where 100 mg/Nm³ norms shall be achieved. Bag filters shall be provided to crushing plant, raw mill hopper, blending silo/kiln feed clinker storage, coal mill system, transfer points and vesting of auxiliaries. The dust collected from the pollution control equipment's shall be recycled back in to the process. Storage of raw material shall be in closed roof shed.</p>	<p>Complied</p> <p>Adequate dust collection and extraction system are installed at various transfer points to control fugitive dust.</p> <p>Glass bag house in raw mill and kiln, ESP in cooler and cement mill and bag filter at all the transfer points are installed. Coal and clinker storage are in the form of stockpile under cover shed. The dust collected from the pollution control equipment is recycled into the process. Storage of raw material is in closed roof sheds. Regular water sprinkling is being done in the raw material stock yard and loading area. Fugitive monitoring report enclose as Annexure-IV</p> <p>CEMS (PM, SO₂ & NO_x) has been installed in cement plant and Power Plant and connectivity provided to CPCB, New Delhi and CECB Atal Nagar. Interlocking system is provided in pollution control equipments. Stacks Emission as per the new Notification dated 10th May, 2016 for Cement and 7th December 2015 for CPP. CEMS data of Cement plant Line I&II can be seen on</p> <p>URL- http://rtdms.cpcb.gov.in/industry-login Id- environment.bhatapara-ind@ambujacement.com</p> <p>CEMS data of CPP can be seen on</p> <p>URL -http://rtdms.cpcb.gov.in/industry-login Id-environment.tppbhatapara-ind@ambujacement.com</p> <p>(Photographs of pollution control equipment's are shown in Annexure I.</p> <p>Cement and CPP manual stacks Monitoring results for the period of October 2020 to March 2021 are given in Annexure II.</p>
iv.	<p>Asphalting/concreting of roads and water spray all around the coal stockpiles shall be carried out to control fugitive emissions.</p>	<p>Complied.</p> <p>For controlling fugitive emission all roads are concreted inside the plant premises and regular water sprinkling is being done around the raw material storage facilities.</p>

Sr. No.	EC Conditions	Compliance Status
v.	Secondary fugitive emissions should be controlled and shall be within the prescribed limits and regularly monitored. Guidelines / Code of Practice issued by the CPCB in this regard shall be followed.	Complied. Monitoring report is enclosed Annexure-IV
vi.	Total water requirement shall be met from the mine pits only and no surface/ground water shall be used. No process wastewater shall be discharged due to use of all the treated wastewater for ash conditioning, dust suppression, green belt development and other plant related activities etc. No effluent shall be discharged outside the factory premises and 'zero' discharge shall be adopted. Domestic effluent shall be used after treated in Sewage Treatment Plant (STP) for green belt development within the plant and colony area.	Complied Total water requirement is being met from our mines pit only. Zero effluent discharge condition is maintained. Domestic waste water after treatment in STP is used for green belt development.
vii.	The entire water requirement shall be met from the artificial reservoir made in mine pit only and no water from surface and ground water sources shall be used for any purpose.	Complied. The entire water requirement is being met from artificial reservoir made in mine pit only.
viii.	The company must harvest the rainwater from the roof tops and storm water drains to recharge the ground water. The company must also collect rain water in the mined out pits and use the same water for the various activities of the project to conserve fresh water.	Complied. Roof tops rain water and storm water drains to recharge the ground water, rain water that gets collected in the mined out pit is used for various activities after proper settling. Rain water harvesting has been started in colony and in nearby villages.
ix.	As proposed in EIA/EMP, out of total 238.97 ha. Green belt shall be developed in 75 ha. (30%) in consultation with the local DFO as per the CPCB guidelines.	Complied. We have developed more than 33% dense green belt within the plant premises. Photographs of Plantation & Certificate shown in Annexure V .
x.	All the cement dust collected from pollution control devices shall be recycled and reutilized in the process. The entire fly ash generated from the power plant shall be pneumatically conveyed to the cement plant and used for manufacturing of Pozollana Portland Cement (PPC) Boiler ash shall be used for land filling Sludge from the sewage treatment plant shall be used as manure Hazardous waste viz. Spent oil from gear boxes and automatic batteries etc. shall be properly	Complied. All the dust collected from pollution control equipments is reused in processes. Fly ash generated from the CPP power plant is handled pneumatically and 100% used in making PPC grade cement. Sludge from the sewage treatment plant is used as manure. Hazardous waste (Used Oil, Waste Oil etc.) and batteries are sold to authorize recycler only.

Sr. No.	EC Conditions	Compliance Status
	stored in a designated area and sold to authorized recyclers / re-processors.	
xi.	Efforts shall be made to make use of high calorific hazardous waste as fuel in kiln. Accordingly, provision shall be made in the kiln and inform to the Ministry.	Complied.
xii.	The company shall undertake eco-development measures including community welfare measures in the project area.	Complied. Ambuja Cement Foundation is engaged in Socio economic welfare activities like Skill development programs, water management, health & sanitation, rural infrastructure development to name a few.
xiii.	All the recommendations of the CREP guidelines shall be strictly followed.	Noted and Complied.
B. General Conditions		
i.	The project authorities must strictly adhere to the stipulations made by the Chhattisgarh Environment Conservation Board (CECB) and the State Government.	Noted
ii.	No further expansion or modifications in the plant should be carried out without prior approval of the Ministry of Environment and Forests.	Noted and Agreed No further expansion or modification will be done without prior approval of ministry.
iii.	At least four ambient air quality-monitoring stations should be established in the downward direction as well as where maximum ground level concentration of SPM, SO ₂ and NO _x are anticipated in consultation with the CECB Data on ambient air quality and stack emission should be regularly submitted to this Ministry including its Regional Office at Bhopal and the CECB/CPCB once in six months.	Complied 4 nos. real time CAAQMS have been installed with consultation of CECB and result can be seen on URL- http://www.envsaindia.com/cpcb/industry.php# Regular ambient air quality monitoring core and buffer zone at ten locations is being done. Continuous stack monitoring system has been installed. Manual AAQM report enclosed as Annexure III .
iv.	Industrial wastewater shall be properly collected, treated so as to conform to the standards prescribed under GSR 422 (E) dated 19th May 1993 and 31st December 1993 or as amended from time to time. The treated wastewater shall be utilized for plantation purpose.	Complied. Industrial waste water properly collected, treated as per the standards prescribed. The treated waste water from the treatment plant is used for the purpose of dust suppression and also recycled in TPP process.

Sr. No.	EC Conditions	Compliance Status
		Monitoring results for the period October 2020 to March 2021 is enclosed as Annexure III .
v.	The overall noise level in and around the plant area shall be kept well within the standards (85dBA) by providing noise control measures including acoustic hoods silencers enclosures etc. on all sources of noise generation. The ambient noise levels should conform to the standards prescribed under EPA Rules. 1989 viz., 75 dBA(daytime) and 70 dBA (nighttime).	Complied. Noise control measures are applied at various noise generating sources. The ambient noise level monitoring report is enclosed as Annexure-III .
vi.	The project proponent shall also comply with all the environmental protection measures and safeguards recommended in the EIA / EMP report. Further the company must undertake socio-economic development activities in the surrounding villages like community development programmes, educational programmes, drinking water supply and health care etc.	Complied. Environmental protection measures, suggested in the EIA/EMP report are duly implemented in the plant. Whereas various socio economic development program is being implemented in surrounding community through Ambuja Cement Foundation. Detail of various socio economic work done during October 2020 to March 2021 attached as Annexure – VIII .
vii.	The project authorities shall provide Rs. 40.00 Crores and Rs. 5.00 Crores/annum towards capital and recurring cost/annum for environmental protection measures to implement the conditions stipulated by the Ministry of Environment and Forests as well as the State Government and an implementation schedule for implementing all the conditions stipulated herein shall be submitted to the Regional Office of this Ministry at Bhopal. The funds so provided shall not be diverted for any other purpose.	Agreed and being complied. State of the art environmental protection measures have been implemented in the plant facilities. Annual funds are allocated for implementation and maintenance of the environmental protection measures to control pollution within permissible limits, details is enclosed as Annexure-VI .
viii.	The Regional Office of this ministry at Bhopal / CPCB / CECB will monitor the stipulated conditions. A six monthly compliance report and the monitored data along with statistical interpretation shall be submitted to them regularly.	Complied. Regular six monthly compliance report and monitoring data is submitted to MoEFCC, CECB & CPCB. Last EC compliance report was submitted by mail Copy is enclosed Annexure-VII .
ix.	The project proponent shall inform the public that the project has been accorded environmental clearance by the Ministry and copies of the clearance letter are available with the CECB/Committee and may also be seen at Website of the Ministry of Environment and Forests at http://envfor.nic.in . This shall be advertised within seven day from the date of issue of the	Complied. Copy of information to the public is enclosed as Annexure-IX .

Sr. No.	EC Conditions	Compliance Status
	clearance letter, at least in two local newspapers that are widely circulated in the region of which one shall be in the vernacular language of the locality concerned and a copy of the same should be forwarded to the Regional office at Bhopal.	
x.	Project authorities shall inform the Regional Office as well as the Ministry, the date of financial closure and final approval of the project by the concerned authorities and the date of commencing the land development work.	<ul style="list-style-type: none"> • Complied. • Environmental Clearance date:13.04.2007 • Annual financial closures is on 31st December
3.	The Ministry may revoke or suspend the clearance, if implementation of any of the above conditions is not satisfactory.	Agreed.
4.	The Ministry reserves the right to stipulate additional conditions if found necessary. The Company in a time bound manner will implement these conditions.	Agreed.
5.	The above conditions will be enforced, inter-alia under the provisions of the Water (Prevention & Control of Pollution) Act, 1974, the Air (Prevention & Control of Pollution) Act,1981, the Environment (Protection) Act, 1986. Hazardous Wastes (Management and Handling) Rules, 2003 and the Public (insurance) Liability Act, 1991 along with their amendments and rules.	Noted.

Compliance of the conditions stipulated in the environmental clearance given by ministry of environment and forests for the expansion project from 1.8 MTPA to 2.4 MTPA cement production, Ref.no. J-11011/539/2008-IA II (I), Date: 23rd December 2008

Sr. No.	EC Conditions	Compliance Status
A. Specific Conditions		
i.	Continuous stack monitoring facilities to monitor gaseous emissions from all the stacks shall be provided. After expansion, limit of SPM shall be controlled within 50mg/Nm ³ by installing adequate air pollution control system viz. glass bag house to kiln mill, bag filters to coal mill etc. As proposed, existing electrostatic precipitators (ESPs) provided to kiln/ shall be replaced by glass bag house. Data on ambient air, fugitive and stack emissions shall be submitted to the Ministry's Regional Office at Bhopal, CECB and CPCB regularly. Efforts shall also be made to reduce SO ₂ and NO _x emissions. Stack emission monitoring reports shall be submitted to the Ministry's Regional Office at Bhopal, CECB and CPCB regularly.	Complied Cement Plant and Captive Power Plant are equipped with pollution control equipments (i.e. Bag filters, Glass Bag House & ESP) of adequate capacity to achieve Particulate Matter emission as per the new Notification dated 10 th May, 2016. Regular lime injection at boiler to reduce SO ₂ emissions and Low NO _x burner has been installed for reduce the NO _x emission as per the new Notification dated 10 th May, 2016 in the cement plant. CEMS (PM, SO ₂ & NO _x) has been installed in cement plant and Power Plant and connectivity provided to CPCB, New Delhi and CECB Atal Nagar. Interlocking system is provided in pollution control equipments. CEMS data of Cement Plant Line-I&II can be seen on URL- http://rtdms.cpcb.gov.in/industry-login and Id- environment.bhatapara-india@ambujacement.com CEMS data of CPP can be seen on URL - http://rtdms.cpcb.gov.in/industry-login Id- environment.tppbhatapara-india@ambujacement.com (Photographs of control equipment's are shown in Annexure I . Cement and CPP manual stacks Monitoring results for the period of October 2020 to March 2021 are given in Annexure II
ii.	Secondary fugitive emissions shall be controlled and should be within the prescribed limits and regularly monitored. Guidelines / Code of Practice issued by the CPCB in this regard shall be followed.	Complied. Monitoring report is enclosed Annexure-IV
iii.	Efforts shall be made to reduce impact of the transport of the raw materials and end products on the surrounding environment including agricultural land. All the raw materials, including fly ash shall be transported in the closed containers only and shall not be overloaded. Vehicular emissions shall be regularly monitored.	Complied. Material transport is being carried out in tarpaulin covered trucks. Transport roads are regularly sprinkled with water and are periodically maintained. Overloading is strictly prohibited. Air quality monitoring is carried out in nearby villages to ensure efficacy of air pollution

Sr. No.	EC Conditions	Compliance Status
		control measures adopted in the plant. Fly ash is transported in closed bulkers.
iv.	<p>The company shall install adequate dust collection and extraction system to control fugitive dust emissions from different sources viz. raw material storage yards, loading and unloading operations, transfer points, crusher, coal mill and packing plant. Bag filters and water sprinkling arrangements shall be made in raw material stock yards and cement bag loading areas etc. Covered sheds for storage of raw materials and fully covered conveyers for transportation of materials shall be provided. Cement and fly ash shall be stored in silos. Dust suppression system shall be provided at transfer points and coal/lignite handling area to control fugitive emissions. Automatic dust cleaning system for removing dust from floors, concrete/tar topped roads inside the plant to avoid dispersion of dust and good housekeeping shall be adopted to control fugitive emissions.</p>	<p>Complied</p> <p>The company has installed adequate dust collection and extraction system to control fugitive dust emissions at various transfer points, raw mill, material handling areas (i.e. unloading, conveying, transporting, stacking), vehicular movement bagging and packing areas etc. ESP is installed at AFBC boiler whereas Glass bag is installed at Raw Mill & Kiln exit to control air emission below 50 mg/nm³ at CPP and 30 mg/Nm³ at Cement plant.</p> <p>Bag filters are provided to crushing plant, raw mill hopper, blending silo/kiln feed, clinker storage, coal mill system and transfer points. The dust collected from the pollution control equipments is recycled back in to the process. Raw material storage areas are provided with closed roof shed.</p> <p>CEMS data of Cement Plant Line I&II can be seen on URL- http://rtdms.cpcb.gov.in/industry-login and Id- environment.bhatapara-india@ambujacement.com</p> <p>CEMS data of CPP can be seen on URL -http://rtdms.cpcb.gov.in/industry-login Id- environment.ipbhatapara-india@ambujacement.com (Photographs of control equipment's are shown in Annexure I.</p> <p>Cement and CPP manual stacks Monitoring results for the period of October 2020 to March 2021 enclosed as Annexure II</p>
v.	<p>Asphalting/concreting of roads and water spray ail around the stockyard and loading/ unloading areas in the cement plant shall be carried out to control fugitive emissions. Regular water sprinkling shall be carried out in critical areas prone to air pollution and having high levels of SPM and RPM such as haul road, loading and unloading points, transfer points and other vulnerable areas. It shall be ensured that the ambient air quality parameters conform to the</p>	<p>Complied.</p> <p>For controlling fugitive emission the roads are black topped/concreted inside the plant premises and regular water sprinkling is being done around the raw material storage facilities.</p>

Sr. No.	EC Conditions	Compliance Status
	norms prescribed by the Central Pollution Control Board in this regard.	
vi.	Ambient air quality including ambient noise levels shall be monitored at different locations including fence of the sanctuary and must not exceed the standards stipulated under EPA or by the State authorities. Monitoring of ambient air quality, fugitive and stack emissions shall be carried out regularly in consultation with CECB and reports submitted to the to the Ministry's Regional Office at Bhopal, CECB and CPCB regularly.	Complied 4 nos. real time CAAQMS have been installed with consultation of CECB and result can be seen on URL- http://www.enysaIndia.com/cecb/industry.php Regular ambient air quality monitoring at six locations is being done. Continuous stack monitoring system has been installed. Manual AAQM and Noise level monitoring report enclosed as Annexure III .
vii.	As proposed, total water requirement for cement plant (50m ³ /day) shall be met from mine pit only and no surface or ground water shall be used. No liquid effluent shall be generated from the cement plant. All the other treated wastewater shall be recycled and reused in the process for cooling and/or for ash quenching, dust suppression, green belt development and other plant related activities etc. No process wastewater shall be discharged outside the factory premises and 'zero' discharge shall be adopted. All the sewage water shall be treated in Sewage Water Reclamation Plant (SWRP) and treated wastewater shall be used for green belt development.	Complied Water requirement of the plant is being met from mines pit water. No effluent is discharged outside the plant premises. Sewage is treated in STP (25X2 KL) , treated effluent is used for green belt development and dust suppression.
viii.	Sewage Water Reclamation Plant (SWRP) shall be used for the treatment of sewage from the colony and treated domestic effluent shall be used for green belt development within the plant premises. Domestic waste from colony and SWRP shall be segregated into biodegradable and non-biodegradable. Biodegradable waste shall be composted and non-biodegradable waste should be land filled at identified sites. Effluent treatment plant (ETP) shall also be provided for workshop.	Complied No effluent is discharged from the process outside the premises. Treated effluent from STP is used for green belt development. Treated effluent from CPP is used in process and dust suppression and recycled in the CPP process through RO. Domestic waste from the colony is used for composting and the compost thus prepared is used for green belt development.
ix.	All the bag filter dust, raw meal dust, coal dust, clinker dust and cement dust from pollution control devices shall be recycled and reused in the	Complied

Sr. No.	EC Conditions	Compliance Status
	process and used for cement manufacturing. Spent oil and batteries shall be sold to authorized recyclers / re-processors only. All the solid waste generated from colony and Sewage Water Reclamation Plant (SWRP) shall be disposed after segregating the waste in to biodegradable and non-degradable. Treated SWRP sludge shall be used as manure for green belt development. The waste oil and scrapped automobile batteries etc. shall be properly disposed off as per the Hazardous Waste (Management & Handling) Rules, 1989 and subsequent amendments and shall be sold to authorized recyclers / re-processors only.	All the bag filter dust, raw meal dust, coal dust, clinker dust and cement dust from pollution control devices is being recycled and reused in the process and used for cement manufacturing. All the solid waste generated from colony and STP are disposed after segregating the waste into biodegradable and non-degradable. Treated STP sludge is used as manure for green belt development. The waste oil and scrapped automobile batteries etc. are sold to authorized recyclers / re-processors only.
x.	An effort shall be made to use high calorific hazardous waste in the cement kiln and necessary provision shall be made accordingly.	Complied. High calorific hazardous waste is being pre-processed and co-processed in kiln. CECB Atal Nagar has granted the permission for utilization of HW. Authorization vide letter No. 6718/HSMD/HO/CECB/2019 Raipur, Date 06/11/2019.
xi.	Efforts shall be made to use low grade lime, more fly ash and solid waste in the cement manufacturing.	Being complied. Low grade lime, Fly ash and other solid waste is being used as alternative raw material and fuel for manufacturing cement.
xii.	All the fly ash shall be utilized as per Fly Ash Notification, 1999 subsequently amended in 2003. Efforts shall be made to use fly ash maximum in making Pozzolana Portland Cement (PPC).	Complied. 100% fly ash generated from our power plant utilized in production of PPC grade cement.
xiii.	As proposed, green belt shall be developed in at least 33 % area in and around the cement plant as per the CPCB guidelines to mitigate the effects of air emissions in consultation with local DFO.	Complied. We have developed more than 33% dense green belt within the plant premises. Photographs of Plantation & Certificate shown in Annexure V .
xiv.	All the recommendations made in the Charter on Corporate Responsibility for Environment Protection (CREP) for the Cement Plants shall be implemented.	Complied.

Sr. No.	EC Conditions	Compliance Status
xv.	The company shall provide housing for construction labor within the site with all necessary infrastructure and facilities such as fuel for cooking, mobile toilets, mobile \ STP, safe drinking water, medical health care, creche etc. The housing may be in the form of temporary structures to be removed after the completion of the project.	Complied.
B. General Conditions		
i.	The project authority must adhere to the stipulations made by Chhattisgarh Environment Conservation Board (CECB) and State Government.	Complied
ii.	No further expansion or modification of the plant shall be carried out without prior approval of this Ministry.	Noted and Agreed No further expansion or modification will be done without prior approval of ministry.
iii.	The gaseous (SO ₂ , NO _x , CO) and particulate matter emissions from various units shall conform to the standards prescribed by the Chhattisgarh Environment Conservation Board. Inter-locking facility shall be provided between pollution control equipment and the process operation so that in the event of the pollution control equipment not working, the respective unit(s) is shut down automatically.	Complied Cement Plant and Captive Power Plant are equipped with pollution control equipments (i.e. Bag filters, Glass Bag House & ESP) of adequate capacity to achieve Particulate Matter emission as per the new Notification dated 10 th May, 2016. Regular lime injection at boiler to reduce SO ₂ emissions and Low NO _x burner has been installed for reduce the NO _x emission as per the new Notification dated 10 th May, 2016. CEMS (PM, SO ₂ & NO _x) has been installed in cement plant and Power Plant and connectivity provided to CPCB, New Delhi and CECB Atal Nagar. Interlocking system is provided in pollution control equipments. CEMS data of Cement Plant Line-I&II can be seen on URL- http://rtdms.cpcb.gov.in/industry-login and Id- environment.bhatapara-india/ambujacement.com CEMS data of CPP can be seen on URL - http://rtdms.cpcb.gov.in/industry-login Id- environment.bhatapara-india/ambujacement.com (Photographs of control equipment's are shown in Annexure I .

Sr. No.	EC Conditions	Compliance Status
		Cement and CPP manual stacks Monitoring results for the period of October 2020 to March 2021 are given in Annexure II
iv.	Industrial wastewater shall be properly collected, treated so as to conform to the standards prescribed under GSR 422 (E) dated 19th May, 1993 and 31st December, 1993 or as amended from time to time. The treated wastewater shall be utilized for plantation purpose.	Complied. Industrial waste water properly collected, treated as per the standards prescribed. The treated waste water from the treatment plant is used for the purpose of dust suppression and also recycled in TPP process. Monitoring results for the period October 2020 to March 2021 is enclosed as Annexure III .
v.	The company shall harvest surface as well as rainwater from the roof tops of the buildings and storm water drains to recharge the ground water and use the same water for the various activities of the project to conserve fresh water.	Complied. Roof tops rain water and storm water drains to recharge the ground water, rain water that gets collected in the mined out pit is used for various activities after proper settling. Rain water harvesting has been started in colony and in nearby villages.
vi.	The overall noise levels in and around the plant area shall be kept well within the standards (85 dBA) by providing noise control measures including acoustic hoods, silencers, enclosures etc. on all sources of noise generation. The ambient noise levels shall conform to the standards prescribed under Environmental (Protection) Act, 1986 Rules, 1989 viz. 75 dBA (day time) and 70 dBA (night time). Compliance to all the standards for DG sets for noise shall be ensured and acoustic enclosures around DG sets shall be provided.	Complied. Noise control measures including acoustic hoods, silencers, enclosures etc. are applied at various noise generating sources. The ambient noise level monitoring report is enclosed as Annexure III
vii.	Proper housekeeping and adequate occupational health programmes must be taken up. All the persons working in the sensitive areas shall wear protective covers. Occupational Health Surveillance programme shall be done on a regular basis and records maintained. The programme must include lung function and sputum analysis tests once in six months.	Complied. Regular housekeeping is being performed. Occupational health program is in place, as a part of that pre medical and periodic medical check-up of employee is being performed, which includes lung function test. Records are maintained at Health department.
viii.	The company shall undertake eco-development measures including community welfare measures in the project area.	Complied. Eco-development measures and community welfare measures are being implemented through Ambuja Cement Foundation.

Sr. No.	EC Conditions	Compliance Status
ix.	The project proponent shall also comply with all the environmental protection measures and safeguards recommended in the Rapid and Comprehensive EIA/EMP.	Complied. Environmental protection measures recommended in EIA/EMP report are duly implemented in the plant.
x.	A separate environmental management cell with full-fledged laboratory facilities to carry out various management and monitoring functions shall be set up under the control of Senior Executive.	Environmental Management Cell along with full-fledged laboratory facilities has been established under supervision of Environmental Head. Head of Environment is directly reporting to Head of plant
xi.	As proposed, Rs. 2.02 Crores and Rs. 0.20 Crores shall be earmarked towards capital cost and recurring cost/annum for environmental pollution control measures shall be used exclusively to implement the conditions stipulated by the Ministry of Environment and Forest's as well as the State Government. A time bound action plan along with the implementation schedule for all the conditions stipulated herein shall be submitted to the Ministry, CECB and CPCB. The funds so provided shall not be diverted for any other purposes.	Complied. State of the art environmental protection measures have been implemented in the plant facilities. Annual funds are allocated for implementation and maintenance of the environmental protection measures to contain pollution within permissible limits, details is enclosed as Annexure-VI.
xii.	The Regional Office of this Ministry at Bhopal/CPCB/CECB shall monitor the stipulated conditions. A six monthly compliance report and the monitored data along with statistical interpretation shall be submitted to them regularly.	Complied. Regular six monthly compliance report and monitoring data is submitted to MoEFCC, CECB & CPCB. Last EC compliance report was submitted by mail Copy is enclosed Annexure-VII.
xiii.	The Project Authorities shall inform the Regional Office as well as the Ministry, the date of financial closure and final approval of the project by the concerned authorities and the date of commencing the land development work.	Complied. Environmental clearance granted on 23rd December 2008. Annual Financial Closure is on 31 st December.
xiv.	The Project Proponent should inform the public that the project has been accorded environmental clearance by the Ministry and copies of the clearance letter are available with the CECB and	Complied. The advertisement of grant of environmental clearance was published in local widely circulated newspapers.

Sr. No.	EC Conditions	Compliance Status
	may also be seen at Website of the Ministry of Environment and Forests at http://envfor.nic.in . This shall be advertised within seven days from the date of issue of the clearance letter at least in two local newspapers that are widely circulated in the region of which one shall be in the vernacular language of the locality concerned and a copy of the same shall be forwarded to the Regional office.	Copy of information to the public is enclosed As Annexure-IX.
7.	The Ministry or any competent authority may stipulate any further condition(s) on receiving reports from the project authorities. The above conditions shall be monitored by the Regional Office of this Ministry located at Bhopal.	Noted.
8.	The Ministry may revoke or suspend the clearance if implementation of any of the above conditions is not satisfactory.	Noted.
9.	Any other conditions or alteration in the above conditions shall have to be implemented by the project authorities in a time bound manner.	Noted.
10.	Any appeal against this environmental clearance shall lie with the National Environment Appellate Authority, if preferred within a period of 30 days as prescribed under Section 11 of the National Environment Appellate Act, 1997.	Noted.
11.	The above conditions will be enforced, inter-alia under the provisions of the Water(Prevention and Control of Pollution) Act, 1974 the Air (Prevention and Control of Pollution) Act,1981 the Environment (Protection) Act, 1986 and the Public Liability Insurance Act, 1991 Along with their amendments and rules.	Noted.

Compliance of the conditions stipulated in the environmental clearance given by ministry of environment and forests for the expansion project from 2.4 MTPA TO 3.5 MTPA, Ref. no. J-11011/72/2009-IA II (I), Date: 15th May 2009

Sr. No.	EC Conditions	Compliance Status
A. Specific Conditions		
i.	The company shall comply with the stipulation made in the environmental clearance granted to the existing plant by the Ministry of Environment and Forests vide letter No. J-11011/539/2008 dated 23rd December, 2008.	Noted and complied. Compliance report of the same is attached herewith.
ii.	The particulate matter emissions from various sources shall not exceed 50 mg/Nm ³ . Bag house/ filters shall be provided to control air emissions to achieve the prescribed standards. The fugitive emissions during loading and unloading shall be suitably controlled.	Complied Cement Plant and Captive Power Plant are equipped with pollution control equipments (i.e. Bag filters, Glass Bag House & ESP) of adequate capacity to achieve Particulate Matter emission as per the new Notification dated 10 th May, 2016. Regular lime injection at boiler to reduce SO ₂ emissions and Low NO _x burner has been installed for reduce the NO _x emission as per the new Notification dated 10 th May, 2016. CEMS (PM, SO ₂ & NO _x) has been installed in cement plant and Power Plant and connectivity provided to CPCB, New Delhi and CECB Atal Nagar. Interlocking system is provided in pollution control equipments. CEMS data of Cement Plant Line-I&II can be seen on URL- http://rtdms.cpcb.gov.in/industry-login and Id- environment.bhatapara-india@ambujaacement.com CEMS data of CPP can be seen on URL - http://rtdms.cpcb.gov.in/industry-login Id- environment.tppbhatapara-india@ambujaacement.com (Photographs of control equipment's are shown in Annexure I . Cement and CPP manual stacks Monitoring results for the period of October 2020 to March 2021 are given in Annexure II
iii.	The locations of ambient air quality monitoring stations shall be set up as per statutory requirement in consultation with Chhattisgarh Environment Conservation Board (CECB) and additional stations shall be installed, if required, in the downwind direction as well as where maximum ground level concentrations are anticipated.	Complied 4 nos. real time CAAQMS have been installed with consultation of CECB and result can be seen on URL- http://www.envsaindia.com/cpcb/industry.php Regular ambient air quality monitoring at ten locations is being done. Continuous stack monitoring system has

Sr. No.	EC Conditions	Compliance Status
		been installed. Manual AAQM and Noise level report enclosed as Annexure III .
iv.	Data on ambient air quality stack emission and fugitive emissions shall be uploaded on the company's website and also regularly submitted on line to Ministry's Regional Office at Bhopal, Chhattisgarh Environment Conservation Board and Central Pollution Control Board as well as hard copy once in six months. Data on SPM, SO ₂ and NO _x shall also be displayed prominently outside the premises at the appropriate place for the general public.	Complied. Data on ambient air quality, stack emission is regularly submitted to MOEFCC, CECB & CPCB. Same is uploaded on the company's website. Website link. http://www.ambujacement.com/sustainable-development/environment/ Data on SPM, SO ₂ and NO _x is also displayed at main gate of the plant premises.
v.	The Company shall submit water conservation and management plan to meet out the requirement of 150 m ³ /day from the existing water sources and no ground water shall be drawn for the plant. The copy of water conservation and management plan shall be submitted to the Ministry and its Regional Office at Bhopal within three months from date of issue of this letter.	Complied Rainwater accumulated in Rawan Mines pit is being used for plant operation. Rainwater harvesting measures are implemented in the plant & colony. Treated effluent from STP in the colony is used for dust suppression and plantation in mines and plant.
vi.	Green belt shall be developed at least in 33% of plant area to mitigate the effect of fugitive emissions all around the plant as per the guidelines of Central Pollution Control Board.	Complied. We have developed more than 33% dense green belt within the plant premises. Photographs of Plantation & Certificate shown in Annexure V .
vii.	The project authorities shall transport the raw materials and cement in covered means to avoid fugitive emission during transport.	Complied. Raw material and cement are transported in fully covered/closed manner.
viii	The clinker requirement shall be met from the existing unit and no additional clinker manufacturing facility shall be installed by the company for this grinding unit.	Noted and Agreed.
ix.	All the recommendations mentioned in the CREP guidelines for the cement plants shall be followed and complied.	Complied.
x.	Provision shall be made for the housing of construction labor within the site with all necessary infrastructure and facilities such as fuel for cooking, mobile toilets, mobile STP, Safe drinking water,	Complied.

Sr. No.	EC Conditions	Compliance Status
	medical health care, crèche etc. The housing may be in the form of temporary structures to be removed after the completion of the project.	
B. General Conditions		
i.	The project authorities shall strictly adhere to the stipulations of the SPCB/state government or any statutory body.	Noted
ii.	All other necessary statutory clearances from the concern Departments including 'No Objection Certificate' from the State Pollution Control Board shall be obtained prior to commencement of construction and/or operation.	Complied.
iii.	No further expansion or modification of the plant shall be carried out without prior approval of the Ministry of Environment and Forests. In case of deviations or alterations in the project proposal from those submitted to this Ministry for clearance, a fresh reference shall be made to add additional environmental protection measures required, if any.	Noted and agreed. No further expansion or modification will be done without prior approval of ministry.
iv.	At no time, the emissions shall exceed the prescribed limits. In the event of failure of any pollution control system adopted by the unit, the unit shall be immediately put out of operation and shall not be restarted until the desired efficiency has been achieved.	Noted and being implemented.
v.	The gaseous emissions (SO ₂ , NO _x ,) and particulate matter along with RSPM levels from various process units shall conform to the standards prescribed by the concerned authorities from time to time.	Complied. CEMS (PM, SO ₂ & NO _x) has been installed in cement plant and Power Plant and connectivity provided to CPCB, New Delhi and CECB Atal Nagar. Interlocking system is provided in pollution control equipments. Monitoring results for the period of October 2020 to March 2021 are given in Annexure II Regular lime injection at boiler to reduce SO ₂ emissions and Low NO _x burner has been installed for reduce the NO _x emission as per the new Notification dated 10 th May,2016. CEMS (PM, SO ₂ & NO _x) has been installed in cement plant and Power Plant and connectivity provided to CPCB, New Delhi and CECB Atal Nagar. Interlocking

Sr. No.	EC Conditions	Compliance Status
		<p>system is provided in pollution control equipments. CEMS data of Cement Plant Line-I&II can be seen on URL- http://rtdms.epcb.gov.in/industry-login and Id- environment.bhatapara-ind@ambujacement.com CEMS data of CPP can be seen on URL -http://rtdms.epcb.gov.in/industry-login Id- environment.tppbhatapara-ind@ambujacement.com (Photographs of control equipment's are shown in Annexure I. Cement and CPP manual stacks Monitoring results for the period of October 2020 to March 2021 are given in Annexure II</p>
vi.	<p>The company shall undertake following Waste Minimization measures.</p> <ul style="list-style-type: none"> • Reuse of by-products from the process as raw materials or as raw material substitutes in other processes. • Use of "Closed pneumatic" system for transport of fine material. • All venting systems shall be connected with dust arresting equipment's. • Dust collected in pollution control equipment's shall be reused. 	<p>Complied.</p> <p>Fly ash generated from captive power plant is fully utilized for making PPC grade cement. Fly ash generated from the power plant is handled by closed pneumatic system. All venting and transfer points are connected with bag filters for arresting the dust. Dust collected in pollution control equipment is reused in the process.</p>
vii.	<p>Fugitive emissions in the work zone environment, product, and raw materials storage area shall be regularly monitored. The emissions shall conform to the limits imposed by the State Pollution Control Boards/Central Pollution Control Board.</p>	<p>Complied.</p> <p>Monitoring report is enclosed Annexure-IV</p>
viii	<p>The overall noise levels in and around the plant area shall be kept well within the standards by providing noise control measures including acoustic hoods, silencers, enclosures etc. on all sources of noise generation. The ambient noise levels shall conform to the standards prescribed under Environmental (Protection) Act, 1986 Rules, 1989 viz. 75 dBA (day time) and 70 dBA (night time).</p>	<p>Complied.</p> <p>Noise control measures are applied at various noise generating sources. The ambient noise level monitoring report is enclosed as Annexure III</p>
ix.	<p>The company shall develop rain water harvesting structures to harvest the run-off water for recharge of ground water.</p>	<p>Complied.</p> <p>Rain water is being harvested in mined out pits. The water requirement of plant and Mines is fulfilled by the harvested water stored in mined out pits. Rooftop rainwater harvesting system is implemented in the plant and colony.</p>

Sr. No.	EC Conditions	Compliance Status
x.	Occupational health and safety measures shall be undertaken. Periodic monitorial for exposure to dust on the workers should be conducted and records maintained including health records of the workers. The company shall engage a doctor who is trained in occupational health.	Complied. Occupational health surveillance program for the workers are undertaken regularly. Pre-employment medical checkup and periodic medical check-up of workers is performing. Records are maintained at Health department. Company has engaged trained doctor having in depth knowledge of occupational health.
xi.	The company shall undertake eco-developmental measures including community welfare measures in the project area for the overall improvement of the environment. The eco-development plan should be submitted to the SPCB within three months of receipt of this letter for approval.	Complied. Eco-development measures and community welfare measures are being implemented through Ambuja Cement Foundation.
xii.	A separate Environmental Management Cell equipped with full-fledged laboratory facilities shall be set up to carry out the Environmental Management and Monitoring functions.	Complied Environmental Management Cell has been established under supervision of Environmental Head with laboratory facilities. Environmental monitoring is being carried out through MOEFCC & NABL accredited laboratories. Head of Environment is directly reporting to plant head.
xiii.	The project authorities shall earmark adequate fund to implement the conditions stipulated by the Ministry of Environment and Forests as well as the State Government. An implementation schedule for all the conditions stipulated herein shall be submitted to the Ministry's Regional Office. The funds so provided shall not be diverted for any other purpose.	Complied. State of the art environmental protection measures have been implemented in the plant facilities. Annual funds are allocated for implementation and maintenance of the environmental protection measures to contain pollution within permissible limits, details is enclosed as Annexure-VI .
xiv.	The implementation of the project vis-à-vis environmental action plans shall be monitored by the concerned Regional Office of the Ministry/SPCB/CPCB. A six monthly compliance status report shall be submitted to monitoring agencies and shall be posted on the website of the Company.	Complied. Six monthly compliance reports are regularly submitted to MoEFCC, CPCB & CECB and are uploaded on website of the company.
xv.	The Project Proponent shall inform the public that the project has been accorded environmental clearance by the Ministry and copies of the clearance letter are available with the SPCB and may also be	Complied.

Sr. No.	EC Conditions	Compliance Status
	seen at Website of the Ministry at http://envfor.nic.in . This shall be advertised within seven days from the date of issue of the clearance letter, at least in two local newspapers that are widely circulated in the region of which one shall be in the vernacular language of the locality concerned and a copy of the same shall be forwarded to the concerned Regional office of the Ministry.	
xvi	The project authorities shall inform the Regional Office as well as the Ministry, the date of financial closure and final approval of the project by the concerned authorities and the date of start of the project.	<ul style="list-style-type: none"> • Complied. • Environmental Clearance date:15.05.2009 • Annual Financial Closure is on 31st December
6.	The ministry may revoke or suspend the clearance if implementation of any of the above conditions is not satisfactory.	Noted.
7.	The Ministry reserves the right to stipulate additional conditions, if found necessary. The company in a time bound manner shall implement these conditions.	Noted.
8.	Any appeal against this environmental clearance shall lie with the National Environment Appellate Authority, if preferred within a period of 30 days as prescribed under Section 11 of the National Environment Appellate Authority Act, 1997.	Noted.
9.	The above conditions will be enforced, inter-alia under the provisions of the Water (Prevention and Control of Pollution) Act, 1974, Air (Prevention and Control of Pollution) Act, 1981 the Environment (Protection) Act, 1986, Hazardous waste (Management and Handling) Rules, 2003 and the Public Liability Insurance Act, 1991 along with their amendments and rules.	Noted.

COMPLIANCE OF THE CONDITIONS STIPULATED IN THE ENVIRONMENTAL CLEARANCE (AMENDED) GIVEN BY MINISTRY OF ENVIRONMENT AND FORESTS FOR THE INTERMEDIATE CEMENT CAPACITY EXPANSION FROM 1.8 MTPA TO 2.9 MTPA, Ref.NO. J-11011/72/2009-IA-II (I), Dated: 13th May, 2011

This has reference to letter no. ACL: BH: ENV: 25: 2010/7216 dated 6.12.2010 seeking permission for expansion of intermediate capacity of cement production from 1.8 MTPA to 2.9 MTPA by installing 1.1 MTPA cement grinding mill. It is noted that intermediate cement capacity expansion for Stage I would be from 1.8 MTPA to 2.9 MTPA by installing a ball mill and then cement capacity expansion for Stage II would be from 2.9 MTPA to 3.5 MTPA by installing a VRPM.

Sr. No.	EC Conditions	Compliance Status
	Additional conditions	
i.	The Stage I and Stage II cement expansion should be within the maximum capacity for which environmental clearance has been obtained i.e. 3.5 MTPA.	Complied The Stage I and Stage II cement expansion is within the maximum capacity of 3.5 MTPA for which environmental clearance has been obtained.
ii.	There shall not be any change in process technology or any other process parameters, or air pollution control system.	Noted and Agreed There is no change in process technology, or any other process parameters, or air pollution control system.
iii.	Continuous on-line monitors for the particulate emissions shall be installed. Interlocking facility shall be provided in the pollution control equipment so that in the event of the pollution control equipment not working, the respective unit(s) is shut down automatically.	Complied. Continuous on-line monitors for the particulate emissions are installed. Interlocking system is provided in pollution control equipments. CEMS (PM, SO ₂ & NO _x) has been installed in cement plant and Power Plant and connectivity provided to CPCB, New Delhi and CECB Atal Nagar. Interlocking system is provided in pollution control equipments. CEMS data of Cement Plant Line-I&II can be seen on URL- http://rdms.epcb.gov.in/industry-login and Id- environment@ambujacement.com CEMS data of CPP can be seen on URL - http://rdms.epcb.gov.in/industry-login Id- environment@ambujacement.com

Sr. No.	EC Conditions	Compliance Status
		(Photographs of control equipment's are shown in Annexure I . Cement and CPP manual stacks Monitoring results for the period of October 2020 to March 2021 are given in Annexure II
iv.	A copy of clearance letter shall be sent by the proponent to concerned Panchayat, Zila Parishad/Municipal Corporation, Urban Local Body and the Local NGO, if any, from whom suggestions/representations if any were received while processing the proposal. The clearance letter shall also put up on the website of the company by the proponent.	Complied. Copy of information to the public is enclosed As Annexure-IV .
v.	The environment statement for each financial year ending 31st March in Form-V as is mandated to be submitted by the project proponent to the concerned State Pollution Control Board as prescribed under the Environment (Protection) Rules, 1986 as amended subsequently, shall also be put on the website of the Company along with the status of compliance of environmental clearance conditions and shall also be sent to the respective regional Office of the MoEFCC by e-mail	Complied Environmental statement is submitted annually to CECB. Compliance of environment clearance condition is regularly submitted to MoEFCC regional office on six monthly basis, same is also uploaded on company's website. Copy of Environment statement is enclosed as Annexure-X .
5.	In case of change in the scope of the project, the company shall obtain fresh environmental clearance.	Noted.

Compliance of the conditions stipulated in the Environmental Clearance (amended) given by ministry of Environment and Forests for expansion in clinker production capacity (4.42 to 4.8 mtpa) by process optimization of m/s Ambuja Cements Ltd. (unit bhatapara), (existing capacity: 2.72 mtpa clinker production (line-ii) and existing total plant area: 238.97 ha) located at village rawan, tehsil & district balodabazar-bhatapara , chhattisgarh-application under clause 7(II) OF EIA Notification,2006-regarding, Ref. NO. J-11011/355/2005-IA-II (I), Dated: 25th Jan'2016

This has reference to letter no. ACL/Bhatapara/Line-II/01 dated 13.08.2015 regarding amendment in Environment Clearance under clause 7(ii) of EIA notification 2006, for the project mentioned above.

The project was earlier accorded Environment Clearance by the Ministry vide letter No. J-11011/355/2005-IA-II (I) dated 13th April, 2007, for Clinker production capacity of 4.42 MTPA (Line I-1.70 MTPA and Line-II 2.72 MTPA) cement production capacity of 3.5 MTPA;CPP of 63 MW (2 * 15 MW & 1* 33 MW) capacity & DG set having 14 MW. The proponent intends to optimize the clinker production capacity of exiting Line-II (i.e. 2.72 MTPA) by process optimization.

Sr. No.	EC Conditions	Compliance Status
	Additional conditions	
3.	There is no additional land requirement for the proposed expansion project, as the same will be done within the existing plant premises by optimization. No additional manpower requirement is envisaged. No additional capital cost is required for proposed expansion. The proponent has mentioned that the existing Air Pollution Control Equipments (APCEs) have adequate potential for proposed marginal expansion capacity.	Complied. No additional land was required during expansion. Expansion was done within plant with process optimisation. No additional capital cost was incurred. There is no change in process technology, or any other process parameters, or air pollution control system.
4	The proposal was considered by the expert Appraisal Committee (Industry) during its meetings held on 13 th -14 th November'2015 (27 th Meeting) and 3 rd -4 th September, 2015 (47 th Meeting) and recommended the project for Environment Clearance subject to stipulation of following additional specific conditions: (i) The Project proponent should install 24 * 7 air devices to monitor air emission, as provided by CPCB and submit report to Ministry and its Regional Office. (ii) The expansion project shall comply with the new MOEFCC standards vide GSR 612(E) dated 25.08.2014 with respect to particulate matter, SO ₂ , NOx for Cement Sector.	Complied 4 nos real time CAAQMS has been installed with consultation of CECB and result can be seen on URL- http://www.envsaindia.com/cpcb/industry.php Regular ambient air quality monitoring at six locations is being done. Continuous stack monitoring system has been installed. Manual AAQM and Noise level report enclosed as Annexure III.

Sr. No.	EC Conditions	Compliance Status
5.	The Ministry had considered the recommendations of Expert appraisal Committee (Industry) and hereby decided to accord Environment Clearance for Expansion in clinker production capacity from 4.42 MTPA to 4.8 MTPA by Process Optimization in line-2 of the existing clinker capacity from 2.72 MTPA to 3.1 mtpa OF m/S Ambuja Cement Ltd. Under clause 7(ii) of EIA Notification, 2006 subject to strict compliance of the following additional specific conditions:	Noted and being complied.
A: SPECIFIC CONDITION :		
(i)	The project proponent should install 24 * 7 air devices to monitor air emission, as provided by CPCB and submit report to Ministry and its Regional office	Complied
(ii)	The expansion project shall comply with the new MOEFCC standards vide GSR 612(E) dated 25.08.2014 with respect to particulate matter, SO ₂ , NO _x for Cement Sector.	Noted and being complied.
6.	The project proponent shall comply with all the environmental safeguards stipulated in the environmental clearance letter of even No. dated 13 th April, 2007	Noted and complied. Compliance report of the same is annexed herewith.
7.	The company shall obtain fresh Environment Clearance in case of any change in the scope of the project.	Noted
8.	This issues with the approval of Competent Authority.	Noted



ESP at TTP 15 MW



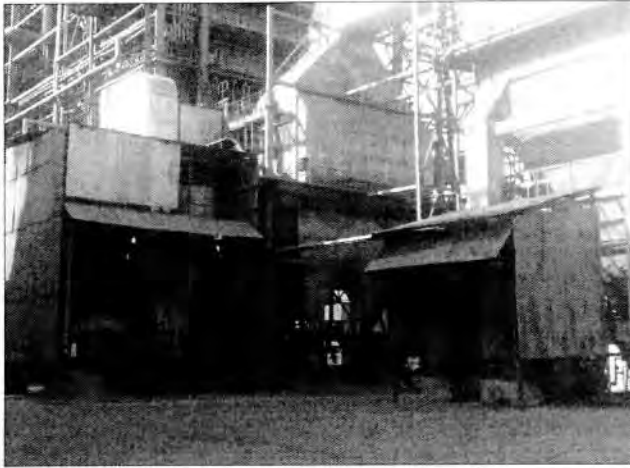
ESP at Cooler



Bag Filter at Crusher Stack



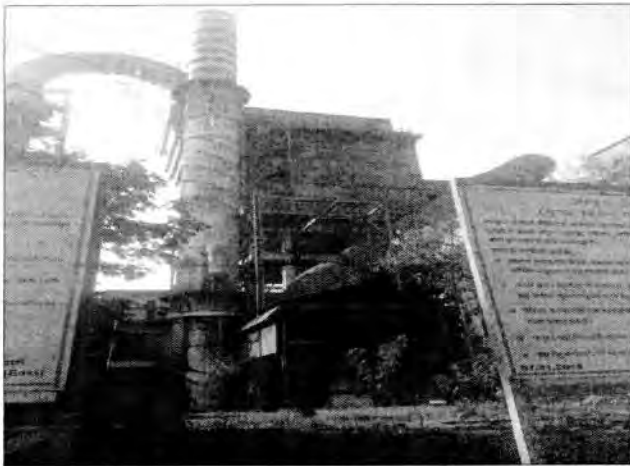
Hybrid Filter at Cement Mill



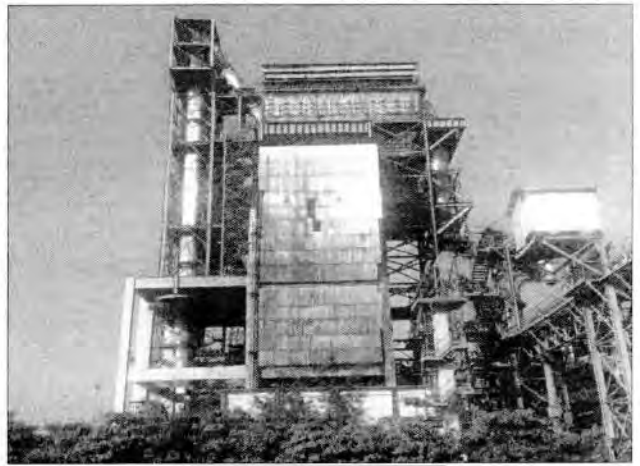
ESP at Old TTP 15 MW



Bag House at Klin Stack



Bag House at Klin Stack



ESP at Cooler

ANNEXURE-II

M/s Ambuja Cements Ltd. Six Monthly Stocks Monitoring Report of Month
Oct-2020 to Mar-21[illegible]

Oct-2020 to Mar-21

Month		Norms (mg/Nm ³)	Oct-20	Nov-20	Dec-20	Jan-21	Feb-21	Mar-21
S.No.	Monitoring Station	CEMS Particulate Matter (mg/Nm³)						
13	DG – 04 MW	50	Didn't Run in the month	Didn't Run in the month	Didn't Run in the month	Didn't Run in the month	Didn't Run in the month	Didn't Run in the month
14	TPP- 15 MW (Old)	50	18.61	16.98	14.62	17.5	21.34	18.66
15	TPP- 33 MW	50	25.05	24.71	16.66	25.00	13.09	14.53
16	TPP- 15 MW (New)	50	14.11	18.9	18.04	20.00	12.61	19.88
		CEMS SO₂						
14	TPP- 15 MW (Old)	600	384.1	312.3	412.3	385.4	394.2	302.3
15	TPP- 33 MW	600	294.55	288.4	218.06	235.95	164.24	201.11
16	TPP- 15 MW (New)	600	167.57	211.98	236.08	235.97	218.88	238.77
		CEMS NO_x						
14	TPP- 15 MW (Old)	300	98.4	92.6	84.6	75.2	71.3	76.5
15	TPP- 33 MW	300	136.31	162.03	121.12	103.97	63.79	102.78
16	TPP- 15 MW (New)	300	63.95	112.44	103.01	103.24	88.56	101.23

Annexure- III

Ambuja Cements Ltd. Six Monthly Ambient Air Monitoring Report (Oct -2020 to Mar-2021)

Ambient Air Monitoring Report of month Oct-2020						Ambient Air Monitoring Report of month –Nov-2020					
Monitoring Station	PM ₁₀ (100µg/m ³)	PM _{2.5} (60 µg/m ³)	SO ₂ (80 µg/m ³)	NOx (80 µg/m ³)	CO (4 mg/m ³)	Monitoring Station	PM ₁₀ (100µg/m ³)	PM _{2.5} (60 µg/m ³)	SO ₂ (80 µg/m ³)	NOx (80 µg/m ³)	CO (4 mg/m ³)
Railway yard check point	65.8-54.2	28.4-22.1	12.9-8.4	28.6-14.7	2.3-1.05	Railway yard check point	74.6-65.2	36.1-26.4	13.5-9.5	32.5-25.4	2.7-1.1
Rawan Mines Office	51.8-62.8	22.6-28.4	6.3-11.48	24.1-32.1	1.65-2.87	Rawan Mines Office	65.2-78.7	27.2-36.9	9.4-14.7	19.6-25.7	1.2-3.6
Maldi Mines Office	44.9-52.9	12.4-17.8	6.4-9.6	15.2-21.4	1.02-1.54	Maldi Mines Office	51.1-62.2	17.1-26.7	4-9.5	11.7-16.8	1.3-2.2
Bhatagaon	50.7	14.8	9.7	22.9	2.06	Bhatagaon	59.4	21.6	11.5	25.6	3.06
Turna	53.1	16.7	6.1	16.7	0.84	Turna	58.2	21.5	7.2	19.1	1.04
Rawan	59.7	20.6	11	26.3	2.88	Rawan	66.9	25.7	13.4	22.6	2.4
Dhandhani	59.2	24.4	9.6	17.2	1.6	Dhandhani	62.1	28.4	11.1	23.6	2.06
Chhuiha	55.6	16.1	13.7	24.7	2.58	Chhuiha	58.4	21.7	12.1	23.6	3.06
Purena	62.3	21.6	8.3	21.2	1.95	Purena	63.5	27.7	10.1	16.6	2.64
Ajuni	66.1	25.69	10.13	27.2	1.87	Ajuni	74.7	24.7	11.6	25.5	2.4
Ambient Air Monitoring Report of month –Dec-2020						Ambient Air Monitoring Report of month –Jan-2021					
Monitoring Station	PM ₁₀ (100µg/m ³)	PM _{2.5} (60 µg/m ³)	SO ₂ (80 µg/m ³)	NOx (80 µg/m ³)	CO (4 mg/m ³)	Monitoring Station	PM ₁₀ (100µg/m ³)	PM _{2.5} (60 µg/m ³)	SO ₂ (80 µg/m ³)	NOx (80 µg/m ³)	CO (4 mg/m ³)
Railway yard check point	74.6-66.2	36.7-24.9	11.1-6.1	22.7-18.4	2.2-0.98	Railway yard check point	75.2-66.6	36.2-24.6	7.6-5.2	22.6-17	1.7-4-0.98
Rawan Mines Office	67.6-75.2	23-31.9	7.3-12.5	18.3-25.6	1.25-2.65	Rawan Mines Office	69.3-77.2	26.9-35.7	5.3-8.3	15.3-24.2	1.98-3.14

Maldar Mines Office	61.1-70.4	15.1-25.7	7.5-10.7	14.7-20.2	0.89-2.07
Bhatagaon	62.5	26.7	9.7	29.6	2.49
Turna	62.4	27.5	8.2	22.6	1.34
Rawan	64.8	22.9	10.7	25.6	2.05
Dhandhani	55.2	21.4	9.6	24.1	2.68
Chhuiha	62.4	26.9	9.7	20.5	2.54
Purena	69.5	22.5	7.7	19.8	3.54
Arjuni	76.2	26.4	9.6	23.5	2.87

Ambient Air Monitoring Report of month –Feb-2021

Monitoring Station	PM ₁₀ (100µg/m ³)	PM _{2.5} (60 µg/m ³)	SO ₂ (80 µg/m ³)	NOx (80 µg/m ³)	CO (4 mg/m ³)
Railway yard check point	76.15-57.49	32.55-22.64	6.17-4.36	22.11-17.34	2.71-1.68
Rawan Mines Office	55.18-71.34	21.08-28.44	4.25-7.01	17.64-21.64	1.42-2.67
Maldar Mines Office	54.15-62.84	19.34-27.41	3.87-5.17	16.01-21.67	1.01-1.68
Bhatagaon	57.15	21.14	04.22	18.04	2.84
Turna	65.18	26.47	5.02	19.34	1.81
Rawan	57.15	12.33	04.26	17.25	2.05
Dhandhani	62.33	23.84	05.64	17.41	2.05
Chhuiha	58.62	27.34	4.15	16.24	2.25
Purena	55.2	18.36	3.51	16.08	2.05
Arjuni	61.24	24.33	05.15	17.05	2.65

Maldar Mines Office	58.2-65.1	16.7-21.6	5.2-9.4	14.4-17.2	1.02-1.84
Bhatagaon	69.6	33.2	7.6	23.6	3
Turna	69.4	30.5	6.2	20.4	1.56
Rawan	68.4	18.2	6.2	20.3	2.6
Dhandhani	58.2	24.3	7.5	19	1.22
Chhuiha	65.4	36.6	6.5	18.4	3.01
Purena	72.1	26.5	4.1	17.5	2.8
Arjuni	79.4	36.5	8.1	18.3	3.2

Ambient Air Monitoring Report of month –Mar-2021

Monitoring Station	PM ₁₀ (100µg/m ³)	PM _{2.5} (60 µg/m ³)	SO ₂ (80 µg/m ³)	NOx (80 µg/m ³)	CO (4 mg/m ³)
Railway Yard check point	70.22-52.05	27.51-22.84	5.68-4.02	24.61-16.25	3.54-2.21
Rawan Mines Office	68.95-79.55	20.34-28.24	4.36-7.14	22.23-27.11	1.98-3.51
Maldar Mines Office	50.31-60.84	17.22-25.37	3.01-4.34	16.22-21.28	0.98-1.61
Bhatagaon	61.03	18.67	04.57	20.16	2.06
Turna	60.15	20.54	4.69	20.36	2.03
Rawan	65.41	17.62	04.74	20.61	2.61
Dhandhani	68.51	26.41	05.22	18.67	2.57
Chhuiha	60.27	23.51	4.03	17.54	2.68
Purena	55.2	18.36	3.51	15.08	2.05
Arjuni	61.24	24.33	5.15	17.05	2.65

Ambuja Cements Ltd. Six Monthly AMBIENT NOISE LEVEL REPORT OF MONTH

Oct -2020 to Mar-2021

S.N o.	MONTH	Oct-20		Nov-20		Dec-20	
	Location	Noise Level (dB)		Noise Level (dB)		Noise Level (dB)	
		Day Time Leq.	Night Time Leq.	Day Time Leq.	Night Time Leq.	Day Time Leq.	Night Time Leq.
1	New CCR Building	71.51	68.7	70.9	67.1	72.65	69.47
2	Main Office plant	60.23	57.84	62.1	59.3	62.48	60.14
3	Rawan Lime stone North Block area	58.69	52.22	55.1	52.1	60.44	51.84
4	Rawan Lime stone South Block area	53.57	50.56	52.2	49.3	55.69	49.22
5	Maldi Lime stone Field office	48.36	43.43	46.2	41.7	47.51	44.05
6	Maldi Limestone Haulage Road	46.82	41.70	45.6	43	47.01	41.84
7	Near TPP Area	72.51	68.8	72.9	67.3	73.54	69.25
8	AFR Office	56.0	53.64	51.5	49.6	54.11	51.04
9	TURMA village	46.38	39.54	49.7	44	48.23	40.28
10	DHANDANI village	42.5	35.68	46.8	39	48.68	42.74
11	Ambuja colony	43.1	38.26	45.7	40.6	41.87	36.48
12	Arjuni village	43.8	38.14	46.5	41.2	45.74	39.25
13	Bhatgoan village	38.6	34.4	42.9	37.8	40.58	36.47

S.N	MONTH Location	Jan-21		Feb-21		Mar-21	
		Noise Level (dB)		Noise Level (dB)		Noise Level (dB)	
		Day Time Leq.	Night Time Leq.	Day Time Leq.	Night Time Leq.	Day Time Leq.	Night Time Leq.
1	New CCR Building	73.6	61.2	72.62	68.46	73.11	68.84
2	Main Office plant	58.14	56.25	62.84	60.67	62.34	59.15
3	Rawan Lime stone North Block area	58.41	55.41	56.64	54.22	55.13	53.41
4	Rawan Lime stone South Block area	57.69	48.74	53.32	49.54	56.54	49.15
5	Maldi Lime stone Field office	46.21	43.51	47.28	44.05	46.78	45.34
6	Maldi Limestone Haulage Road	45.62	42.0	44.28	42.32	46.84	43.47
7	Near TPP Area	72.94	60.63	70.74	65.63	73.22	69.48
8	AFR Office	52.04	48.71	53.24	49.75	54.61	48.74
9	TURMA village (R)	45.15	42.55	48.03	43.24	46.71	40.21
10	DHANDANI village (R)	46.35	40.67	44.27	42.12	47.27	41.68
11	Ambuja colony (R)	43.51	39.52	45.36	42.15	46.82	43.58
12	arjuni village (R)	44.38	40.87	45.08	41.44	47.69	43.57
13	Bhatagoan village (R)	43.27	38.41	45.17	39.45	46.14	41.25

Norms**	Area	Day Time Leq.	Night Time Leq.
	Industrial area (I)	75	70
	Commercial area	65	55
	Residential area (R)	55	45
	Silence Zone	50	40

M/s Ambuja Cements Ltd. Six Monthly ETP, STP and Mine water REPORT OF MONTH

MONTH		Oct-20					Nov-20					Dec-20				
S. No.	Test Parameters	pH	COD (mg/l)	BOD (mg/l)	Oil & Grease (mg/l)	SS (mg/l)	pH	COD (mg/l)	BOD (mg/l)	Oil & Grease (mg/l)	SS (mg/l)	pH	COD (mg/l)	BOD (mg/l)	Oil & Grease (mg/l)	SS (mg/l)
	Location															
	Norms	5.5-9	250	30	10	100	5.5-9	250	30	10	100	5.5-9	250	30	10	100
1	STP Ambuja Colony (treated)	7.45	16	<3	0.6	<40	7.02	12	<3	0.7	<40	7.15	28	<3	0.6	<4
2	STP near Plant (treated)	7.40	20	6.0	0.4	16.0	7.77	24.0	8.0	0.6	12.0	7.4	16	6	0.4	8
3	STP New CCR (treated)	8.01	16	8.0	0.6	15.0	8.74	20.0	8.0	0.5	12.0	7.46	12	3	0.6	4
4	Rawan Mines Work Shop (treated)	7.25	16.0	8.0	0.5	<4.0	8.17	12	6	0.7	<4	7.63	16	8	0.5	<4
5	TPP DM Plant backwash (TTP) (treated)	7.51	18.0	6.0	<1	<4.0	8.02	28	8	<1	<4.0	7.68	28	6	0.5	<4.0

Annexure- IV

M/s Ambuja Cements Ltd. Six Monthly Fugitive Dust Emission Analysis Report of Month Oct 2020 to Mar 2021

	MONTH	Oct-20
Sr. No.	LOCATION	SPM (µg/m3)
1	Packing plant fly ash unloading area	1752.36
2	Wagon loading area	1562.24
3	clinker cooler 2 area	1427.6
4	cement mill silo	1567.33
5	coal stacker	1284.72
6	crusher unloading area	1428.87
7	gypsum yard area	1627.64
8	coal dome	1268.05
9	cement mill (TLM 1 & 3)	1658.15
10	cement mill near VRPM	1698.41
11	Field office area (south block)	751.69
12	Field office area (north block)	824.17
13	crusher area (Maldi Mines)	526.68
14	Near workshop Area (Maldi Mines)	574.15
Norms		2000

	MONTH	Nov-20
Sr. No.	LOCATION	SPM (µg/m3)
1	Near AFR office	1287.9
2	South block haulage road	1376
3	North block haulage road	1422.1
4	TPP area	1532.3
5	North block field office	1132.5
6	mines loading area	987.4
7	coal yard	1288
8	coal yard CPP area	1043.7
9	Flyash loading CPP	1698.9
10	Railway operation area	1278
11	Field office area (south block)	1023.7
12	Field office area (north block)	1154
13	crusher area (Maldi Mines)	634.1
14	Near workshop Area(Maldi Mines)	718.9
Norms		2000

	MONTH	Dec-20
Sr. No.	LOCATION	SPM (µg/m3)
1	Silo area -3	1662.5
2	Packer floor -5	1462.34
3	Packing plant (road side area)	1784.4
4	Coal yard area	1362.2
5	CM area	1551.14
6	WLM-3 packing plant area	967.25
7	Reclaimer stacker area	1634.29
8	Clinker stock pile area	1568.6
9	Silo area (CM 1 & 2)	1184.15
10	Field office area south block	1397.61
11	Field office area north block	975.64
12	Workshop area	761.28
13	Maldi mines crusher house	625.48
14	Workshop area maldi mines	965.1
Norms		2000

	MONTH	Jan-21
Sr. No.	LOCATION	SPM (µg/m3)
1	Packing plant truck loading area	1724.3
2	CM -1	1698.62
3	TPP-15MW (Bioler -2 area)	1562.15
4	Truck yard	1468.4
5	Coal mill line -1	1154.11
6	Coal mill-2	1262.48
7	Raw mill & kiln line -1	1422.61
8	New CCR parking area	1503.68
9	Raw mill line -2	1688.34
10	AFR area	1105.12
11	Rawan mines field office south block	975.64
12	Rawan mines field office north block	761.28
13	Maldi mines crusher house	625.48
14	Maldi mines workshop area	965.1
Norms		2000

	MONTH	Feb-21
Sr. No.	LOCATION	SPM ($\mu\text{g}/\text{m}^3$)
1	Near line -2 CCR	1862.4
2	Rawmill -1 gear box	1835.16
3	Rawmill -2 gear box	1627.65
4	Cement mill 1 & 3	1562.15
5	Silo area	1362.4
6	compressor area	1422.33
7	crusher line 1 & 2	1682.47
8	Tpp new bed ash silo	1761.26
9	packer building 2nd floor	1417.2
10	packer 7 area(near truck loading)	1457.5
11	Rawan mines field office area (south block)	1227.3
12	Rawan mines field office area (north block)	1365.7
13	Near Maldi Mines Crusher house	782.6
14	Near workshop Area (Maldi mines)	684.9
Norms		2000

	MONTH	Mar-21
Sr. No.	LOCATION	SPM ($\mu\text{g}/\text{m}^3$)
1	Packer-5	1724.3
2	Near packing building	1698.62
3	TLM (between 1 to 3)	1562.15
4	TLM-5	1468.4
5	WLM-4	1154.11
6	Near crusher line-2	1262.48
7	Rawan mines filed office	1422.61
8	Stacker line-1	1503.68
9	Reclaimer line-1	1688.34
10	Clinker stock pile line-2	1105.12
11	Rawan mines field office area (south block)	1238.37
12	Rawan mines field office area (north block)	1155.74
13	Near Maldi Mines Crusher house	721.36
14	Near workshop Area (Maldi mines)	865.06
Norms		2000

Annexure- V

Certificate

This is to certify that M/s Ambuja Cements Limited was inspected on 14 June 2016. It was found that plantation of trees in its Plant and Mines area as well as along State Roads is as per guidelines issued by Chhattisgarh Environment Conservation Board, Raipur, and Ministry of Environment and Forests. The required area is covered with variety of trees with safety and protection measures well in place. The salient features observed during the course of inspection are as follows.

1. 79.65 Hectares is covered with Green Belt out of 238.97 Hectare area in the plant premises which is more than 33% of Plant Area.
2. 36.2 Hectares is covered with Green Belt in Mines.
3. Over 30,000 saplings of Neem, Shisham, Jamun, Kadam, Karanj etc have been planted along Baloda Bazar – Bhatapara road as also around several villages, notably Bharseli and Kukurdi in the years 2014 and 2015. The survival percentage for the mentioned plantation is over 90%.

Place: Raipur

Date: 28-06-2016

(C. M. Shakeel)

C.M. SHAKEEL
Consultant
Forests & Environment
Raipur (C.G.)

Annexure - VI

Environment Expenditure		
S.No.	Particulars	Cost (in Lacs)
1	Environment Monitoring	12.34
2	CAAQM Annual maintenance Charge	3.32
3	EQM Annual maintenance Charge	0.93
4	AMC FOR GAS ANALYZER	1.53
5	RO Plant Monthly O&M charges	17.70
6	DISPLAY BOARD	7.55
7	CEMS Annual maintenance Charge	4.17
8	Bag house maintenance charge	17.73
9	ESP maintenance charge	0.55
10	Dust sprinkler Charge	9.75
11	Sweeping Machine Charge (Recurring Cost)	28.8
12	Plantation and its maintenance Cost	0.00
13	EC Consultancy for Maldi Mopar Expansion	2.43
14	EC Consultancy for LINE 3	4.86
15	CTO Renewal consultancy service	12.05
	Total	123.71

Sanjay Kumar YADAVA <sanjay.yadava@ambujacement.com>

Annexure - VII

Reg. Submission of Six monthly EC Compliance Report along with Environmental Monitoring Reports for the period April to Sept.-2020 for Cement Plant Complex of Ambuja Cements Ltd. (Unit-Bhatapara), Chhattisgarh

1 message

Sanjay Kumar YADAVA <sanjay.yadava@ambujacement.com>

Mon, Nov 30, 2020 at 11:22 AM

To: apccfcentral-ngp-mef@gov.in, CPCB RD Bhopal <cpcb.bhopal@gmail.com>, Head Office CECB <hocecb@gmail.com>, Regional Officer <rocecbraipur2014@gmail.com>, ecompliance-cg@gov.in

Ref:

1. EC letter no. J-11011/289/2005-IA II (I) dated 6th January 2006.
2. EC letter no. J-11011/355/2005-IA II (I) dated 13th April 2007.
3. EC letter no. J-11011/539/2008-IA II (I) dated 23rd December 2008.
4. EC letter no. J-11011/72/2009-IA II (I) dated 15th May 2009.
5. EC letter no. J-11011/72/2009-IA-II (I) dated 13th May, 2011.
6. EC letter no. J-11011/355/2005-IA II (I) dated 25th Jan'2016.

Dear Sir/Madam,

Please find the attached herewith the Six Monthly EC Compliance Report and Environmental Monitoring Report (April to Sept.-2020) for integrated Cement Plant of Ambuja Cements Ltd. (Unit Bhatapara), Chhattisgarh. Same copy has been uploaded on the company and MOEFCC website. This is for your kind information and record please.

Thanks & Regards

Sanjay Yadav
Environment Dept.
Ambuja Cements Ltd. Unit - Bhatapara,
Dist: Baloda BazaBhatapara, Chhattisgarh
Mobile - 8982073666
www.ambujacement.com



Bhatapara-Plant- Half Yearly EC Compliance Report-April-Sept. 2020..pdf
3386K

CSR ACTIVITIES DURING THE YEAR
October 2020 to March 2021
Highlights of Works of Ambuja Cement Foundation

Programme/Activities	Achievement	Details of Activity
Water Resource Management & Drinking Water		
Water Resource Management & Drinking Water		
Drinking water pipeline repairing	1	Bharseli
Handpump (repairing)	25	Rawan, Arjuni, Mladi
Water quality testing	48	Core villages
Check Dam construction / Renovation	3	Rawan, Mopar
Rain Water Recharge Structure	9	Rawan, Devrani
Soak Pit Construction	20	Rawan, Mopar
Awareness painting on water	13	Core villages
Rural Infrastructure Development		
Solar Street light	16	Devrani
Construction of CC road	400 meter	Rawan, Karmandi
Rural Haat	1	Maldi
Grill work on road divider	1000 meter	Baloda Bazar
Hume pipe laying	2	Mopar
Agro Based Livelihood & Allied Activities		
Follow up of Farmers under SRI (Paddy) and DSR	118	Core Villages
Wheat Cultivation with improved package of practices (including zero tillage wheat cultivation)	270	Core villages (270 acre)
Mustard cultivation with improved package of practices	94	Core villages (120 acre)
Training of farmers on improved package of practices for wheat/mustard cultivation and felicitation program	129	Core Villages
Exposure of farmers at Wheat/Mustard demo plots (farmer's Field day)	743	Core Villages
Soil testing of farmer's plot a	24	Core Villages
Goat shed construction	8	Core Villages
Send our goat farmers at "District Level Animal Exhibition & Fair"	6	All three prizes received by our farmers in Goat Category
No. of animal treated/vaccinated	4109	139 Households

Support farmer producer company to set up their business like- Infrastructure for Custom Hiring Centre, other support	221	221 members from core villages
Support farmers to install solar pump for irrigation	4	Core Villages
Support farmers for piloting Biofloc Fish Farming	4	Core Villages
Goat Calendar distribution for all GBLG (Goat Based Livelihood Group) members	170	Core Villages
Health & Sanitation		
ANC Camp Organized	39	Core Villages
Total Patient treated	589	
Special health Camp Organized	7	Core Villages
Total Patient treated	119	
NCD Camp	29	Core Villages
Total Patient treated in NCD Camp	1240	
Organized NCD Awareness Sessions	255	Core Villages
People Sensitized through NCD Awareness Sessions	3060	Sensitized on NCD reasons, symptoms, effects & treatment
Awareness Generation Camp on various Health Issues	769	Sensitized on MCH, MHM and Nutrition. prevention of Covid 19 virus, early testing and vaccination of Covid 19
No. of Participant in Health Awareness	9063	
Women Empowerment		
New SHG Formed	43	Core Villages
New Members added in SHGs	486	Core Villages
No. of SHGs Linked with Bank	27	Core Villages
No. of Six Module Training	144	Core Villages
Total Corpus of SHGs	18699004	Core Villages
No. of SHGs Record checked and Updated	335	Core Villages
No. of Members doing Income Generating Activity	1580	Core Villages
Skill Development		
Training Batch Completed	15 Batches	
Trainee Trained	302	
Trainee Placed	229	76%
Ongoing Training Batch	0	All Batches completed till 31 st Mar 2021
Total No. of Trainee Enrolled	316	Enrolled during the period Oct

		20 to Mar 21
Innovated Virtual E- Pamphlet, and online Registration form for mobilization	Registered 286 inquiry	Conducted 06 Days Road show under the following Guidelines and wall painting done 34 villages covered in District Baloda Bazar- Bhatapara
Conducted Virtual interview for placement	Total 189 Trainees Participated	
Conducted parents meeting through virtual meet platform	156 parents participated in virtual parents meet.	
Bankers invited for briefing through online virtual meet	302 trainee participated.	LDM, Mr. M Prashad, Mr. S. S. Baghel (DIC) Baloda Bazar
We have conducted five safety awareness and motivational sessions such as handset safety, thunder safety, road safety and under the governments guidelines follow the during COVID- 19 situation.	296 youth participated.	
Organized guest lecture in virtual class from different SEDI locations for domains, Electrical, Retail, Mason, Beautician and soft skill.	28 Guest lectures	Through online internal and External Guest

Financial Statement

AMBUJA CEMENT FOUNDATION – Bhatapara		
EXPENSES DETAIL FROM 01-10-2020 to 31.03.2021		
S.NO	ACTIVITIES	LH SPEND
1	EDUCATION SUPPORT PROGRAMME	745096.00
2	WATER RESOURCE MANAGEMENT	1385605.37
3	HEALTH AND SANITATION DEVELOPMENT	2536972.24
4	WOMEN EMPOWERMENT	928905.00
5	RURAL INFRASTRUCTURE DEVELOPMENT	8986619.00
6	AGRICULTURE AND ALLIED ACTIVITIES	2718291.80
7	SKILL DEVELOPMENT	3218110.71
8	SPORTS AND CULTURAL ACTIVITIES	344434.00
9	ESTABLISHMENT	536555.57
	TOTAL=	21400589.69

Activity Photographs.

AGRI BASED LIVELIHOODS:



Wheat Cultivation



Farmers field day



Mustard cultivation



Vaccination under Goat program

WATER RESOURCE MANAGEMENT:



Check Dam Renovation



Hume Pipe Laying



Check Dam Renovation- Diversion



Check Dam Renovation- Diversion

HEALTH AND SANITATION:



ANC camp



Pediatric Camp



Adolescent Training Programme



General Health Camp

WOMEN EMPOWERMENT:



IGA- Vermi-Compost Making



IGA- Kirana Shop



IGA- Bathing Soap Making



SHG Training



Online Virtual Training, ACF, SEDI

Bankers online session for financial support, by Lead Bank Manager, SBI & DIC

रजिस्ट्रेशन फॉर्म (Registration Form)

क्या आप बेरोजगार हैं ?

यदि आपका जवाब हाँ है तो, आज ही अम्बुजा सीमेंट फाउंडेशन द्वारा चलाये जा रहे कौशल प्रशिक्षण संस्थान में प्रवेश लेकर खुद को रोजगार में आने की तरफ एक कदम बढ़ाएं। कॉल करें - 9009330390, 9649009111

अम्बुजा सीमेंट

अपना नाम (Your Name) *

Online E-Registration

ऑनलाइन क्लासेस

घर बैठे कौशल सीखने एवं रोजगार प्राप्त करने का सुनहरा अवसर

Free Online Classes

हमारी विशेषताएं-

- क्वालिटी ट्रेनिंग
- 100 % जॉब प्लेसमेंट में मदद
- डी मोबाइल रिचार्ज
- मान्यता प्राप्त सर्टिफिकेट
- 100 से ज्यादा कंपनी पार्टनर

Admission Open

Session 2020-21

क्रमांक	कोर्स	इन्कताम सत्रिता	आयु	अवधि
1	अडिस्टेड इलेक्ट्रिकल	10 वी पास	18-30 वर्ष	02 माह
2	रिटेल मैनेजमेंट	12 वी पास	18-30 वर्ष	01 माह
3	होटल मैनेजमेंट	12 वी पास	18-30 वर्ष	02 माह
4	क्यूटिश्चियन	8 वी पास	18-30 वर्ष	02 माह

अधिक जानकारी के लिए कॉल करें - 9009330390, 9649009111

नोट-प्रशिक्षण हेतु घर पर स्मार्ट फोन होना आवश्यक है-

Online Registration Form

We at ACF are extremely delighted to announce the **Skill Icon Award** for the Quarter July-September, 2020



Chatur Singh Dhruw – Trainee from SEDI, Bhatapara



Heartiest Congratulations to the Winner and Team SEDI, Bhatapara for their contributions !

Chatur Singh Dhruw from Baloda Bazar always aspired to help his single mother in improving the financial conditions of the family. Having completed 10th and 11th, he had to dropout and work on menial wages at road sites, railway tracks and construction sites as a helper. As a tribal he was demotivated by the community about SEDI but his life changed on completing his 4 month course in Asst Electrical. He got placed at Nuvaco Samlin and earns Rs. 15,000 per month including additional benefits of meals, accommodation and PF. Chatur says, "I was very happy that SEDI even supports us from disadvantaged communities. They not only help secure decent employment but also make us representatives of a just society". Team ACF is a proud of his achievements.

Skill Icon Award, Chatur Dhruw, Electrical Trade



Virtual Interview by Reliance Smart



Wall Painting work, under the Mobilization Activity in 42 villages at Baloda Bazar-Bhatapra

15:38


खबर
 भाटापारा


जागरूकता जनसेवा देश

कौशल एवं उद्यमिता विकास संस्थान (सेडी) भाटापारा के द्वारा प्रेस वार्ता का आयोजन किया गया

By Khabar Bhatapara - 2 February 2021

78

लाइक करें 8



Facebook

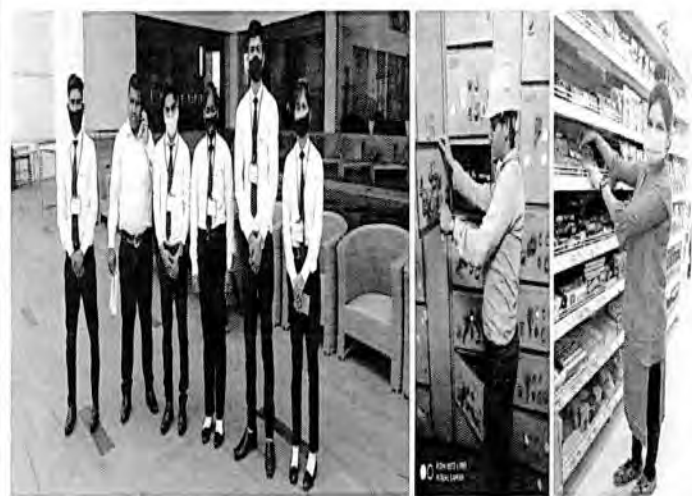


WhatsApp



भाटापारा :- सेडी, अंबुजा सीमेंट फाउण्डेशन जो कि कौशल एवं उद्यमिता विकास के क्षेत्र में 2010 से निरन्तर बेरोजगार युवक एवं युवतियों को विभिन्न ट्रेड ब्यूटिशियन, इलेक्ट्रीशियन, रेफ्रिजरेटर एवं ए. सी. रिपेयरिंग, रिटेल मार्केटिंग, होटल मैनेजमेंट में प्रशिक्षण देकर रोजगार से जोड़ने का निरन्तर प्रयास कर रहा है।

ब्रेकिंग न्यूज़ ने घर की छत पर पार्टी का



Placement Photos

Press Meet Conducted in SEDI Bhatapara

Ambuja Cement

प्रति,

- 1- अध्यक्ष,
जिला पंचायत रायपुर
- 2- अध्यक्ष,
नगरपालिका परिषद बलौदाबाजार
- 3- सरपंच,
ग्राम पंचायत रवान, भद्रापाली, पौंसरी, कुकुरदीह भरसेली
तहसील बलौदाबाजार जिला रायपुर छ0ग0

माननीय महोदय,

अम्बुजा सीमेंट लिमिटेड रवान के अभ्यावेदन पर भारत शासन पर्यावरण एवं वन मंत्रालय नई दिल्ली ने अपने पत्र दिनांक 13 मई 2011 द्वारा सिमेंट संयंत्र के विस्तारीकरण के फलस्वरूप उत्पादन क्षमता 1.8 एम0टी0पी0ए0 में वृद्धि करते हुए 3.5 एम0टी0पी0ए0 बढ़ाने की अनुमति प्रदान की है कि नियमानुसार कम्पनी द्वारा पर्यावरण से संबंधित निर्देशों का पालन किया जावेगा।

इस संदर्भ में निर्देशानुसार भारत शासन पर्यावरण एवं वन मंत्रालय के आदेश की प्रतिलिपि इस पत्र के साथ आपकी जानकारी के लिए संलग्न है।

दिनांक - 18/5/2011

संलग्न - पर्यावरण एवं वन मंत्रालय भारत

शासन का पत्र दिनांक 13/5/2011
की छायाप्रति

वास्ते

अम्बुजा सिमेंट लिमिटेड

रमेश मिश्रा

प्रबंधक (जन सम्पर्क)

राधावती

सरापंच

ग्राम पंचायत रवान
वि.खं. बलौदाबाजार (छ.ग.)

18/5/2011

रमेश मिश्रा

सरपंच
ग्राम पंचायत, भरसेली

18/5/2011

रमेश मिश्रा

ग्राम पंचायत पौंसरी
वि.खं. बलौदाबाजार (छ.ग.)

AMBUJA CEMENTS LIMITED

(UNIT - BHATAPARA)

WORKS : P.O. : Rawan, Tehsil : Baloda Bazar, Dist. : Raipur (Chhattisgarh) 493 331, Phone : 07727-220010-15, Fax : 07727-220004
RAIPUR OFFICE : "Matri Chhaya", Ravi Nagar, Raipur-492 001 (C.G.) Ph. : 0771-2422039, 2424382, 2425311, Fax : 0771-4010030
REGD. OFFICE : P.O. : Ambuja Nagar, Taluka : Kodinar, Dist. : Junagarh, Gujarat-362 715

Central Chronicle Date - 05-06-2009

NOTICE

Ambuja Cements Ltd., Unit: Bhatapara hereby informs that the Environmental Clearance for the expansion project for production of 3.5 MTPA Cement has been accorded by the Ministry of Environment and Forests. A copy of the clearance letter is available with Chhattisgarh Environment Conservation Board/Committee and may also be seen at the website of Ministry of Environment & Forests i.e. <http://envfor.nic.in>

Haribhumi Date - 05-06-2009

सूचना

अंबुजा सीमेंट्स लिमिटेड इकाई भटपारा द्वारा सर्वबनों को सूचित किया जाता है कि उन्हें उनको क्षमता विस्तार परियोजना 3.5 लाख टन सीमेंट उत्पादन प्रति वर्ष हेतु पर्यावरण एवं वन मंत्रालय से पर्यावरण क्लीयरेंस मिल गया है। इसकी प्रति क्लीयरेंस पर्यावरण संरक्षण मंडल के पास भी उपलब्ध है। पर्यावरण क्लीयरेंस को पर्यावरण एवं वन मंत्रालय की वेबसाइट <http://envfor.nic.in> पर भी देखा जा सकता है।

Annexure - X
o/c

Ambuja Cement

REF: ACL/ENV/2020-21/142

Date : 15.09.2020

To,
The Member Secretary
Chhattisgarh Environment Conservation Board,
Paryavas Bhavan, North Block Sector-19,
Nava Raipur, Atal Nagar (C.G.) 490099

Sub : Submission of Environmental Statement (Form-V) of Cement Plant (including Line-1 & Line-2), CPP and DGs. M/s Ambuja Cements Limited, Unit-Bhatapara for the FY 2019-20.

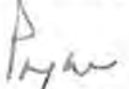
Sir,

Please find enclosed herewith dully filled Form – V (see rule 14), Environment Statement Report (FY 2019-2020) for Cement Plant (including Line-1 & Line-2), Captive Power Plant and DGs.

This is for your kind information and reference.

Thanking you,

For Ambuja Cements Limited.
(Unit- Bhatapara)


(Pankaj Lochan)
Manufacturing Cluster Head (East)



CC. : The Regional Officer, CECB, Kabir Nagar Commercial Complex, Chhattisgarh Housing Board Colony, Kabir Nagar, Raipur (C.G.)

AMBUJA CEMENTS LIMITED
(Unit - Bhatapara)

Vill & PO. : Rawan, Tehsil Balodabazar, Dist.: Baloda, Bazar-Bhatapara, Chhattisgarh- 493 331
Ph.: 07727-220010 to 15, Fax: 077277220004
CIN: L2694GJ1981PL004717, Website www.ambujacement.com
Regd. Office: PO: Ambuja Nagar Taluka: Kodinar, District: Gir Somnath,, Gujarat, 362715

Submission of Half Yearly EC Compliance Report with Environmental Monitoring Report for the period Oct 2020 to March 2021 For Cement plant Complex of Ambuja cements Ltd

1 message

Environment Bhatapara <environment.bhatapara-ind@ambujacement.com>

Tue, Jun 1, 2021 at 6:07 PM

To: iro.raipur-mefcc@gov.in, CPCB RD Bhopal <cpcb.bhopal@gmail.com>, Head Office CECB <hocecb@gmail.com>, Regional Officer <rocecbraipur2014@gmail.com>, ecompliance-cg@gov.in

Dear Sir/Madam,

Please find the enclosed here with the six monthly Environment Clearance Compliance Report of stipulated conditions along with Monthly Environmental Monitoring Report (Oct 20 to March 2021) for For Cement plant Complex of Ambuja cements Ltd. Same copy has been uploaded on the company MOEFCC website.

This is for your kind information and record.

Regards

ANUBABU.B,
Environment Dept.,
Ambuja Cement Ltd (Bhatapara Unit),
Rawan Village, Baloda Bazar Dist.,
Chhattisgarh-493331,
Mobile: +91-8982073523 & +91-7000182227.
Office: 8982073666

 **ACL-BYT-ENV-HECR-2021-22-85.pdf**
11925K