

Ref: ACL/BYT/ENV/2021-22/86

Date: 28.05.2021

To,
The Regional Officer,
Integrated Regional office,
Ministry of Environment, Forest & Climate Change,
Aranya Bhawan, North Block,
Sector-19, Naya Raipur, Atal Nagar,
Chhattisgarh - 492002.

Sub: Submission of Half Yearly Environment Clearance Compliance Report along with Environmental Monitoring Report for the period **Oct 2020 to Mar 2021** for Rawan Limestone Mines.

Ref: EC letter no. J-11015/330/2006-IA II (M) dated 8th June 2007.

Dear Sir,

Please find the enclosed herewith the six monthly Environment Clearance compliance report along with Monthly Environmental Monitoring report from **Oct 2020 to Mar 2021**, for our Rawan Limestone Mine at Village & Post office- Rawan, Distt. Balodabazar, Chhattisgarh.

This is for your kind information and record please.

Thanking you.

Yours faithfully,
For Ambuja Cements Limited,
(Unit: Bhatapara)


(A V N V S Murthy)
Unit Head

Encl.: Six Monthly Environment Clearance compliance report along with Environment Monitoring report.

Copy to:

1. Central Pollution Control Board, Zonal Office, Sahkar Bhawan, North T.T. Nagar, Bhopal -462003.
2. The Member Secretary, Chhattisgarh Environment Conservation Board, Paryavas Bhavan, North Block Sector-19, Atal Nagar (C.G.) 490099.
3. The Regional Officer, CECB, Kabir Nagar Commercial Complex ,Chhattisgarh Housing Board Colony, Kabir Nagar, Raipur (C.G.)

AMBUJA CEMENTS LIMITED

(Unit - Bhatapara)

Vill & PO. : Rawan, Tehsil Balodabazar, Dist.: Baloda, Bazar-Bhatapara, Chhattisgarh- 493 331

Ph.: 07727-220010 to 15, Fax: 077277220004

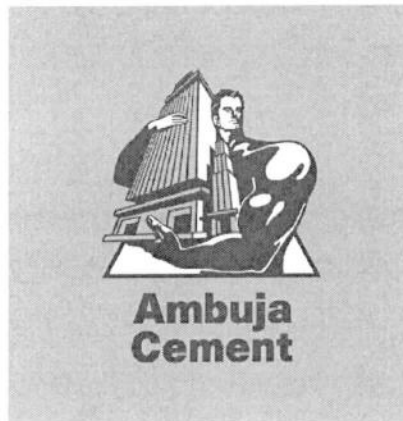
CIN: L2694GJ1981PL004717, Website: www.ambujacement.com

Regd. Office: PO: Ambuja Nagar, Taluka: Kodinar, District: Gir Somnath,, Gujarat, 362715

**Environment Clearance Compliance Report
For
(Oct.2020 to March.-2021)**

of

**Rawan Limestone Mine
(Capacity: 6.31 MTPA, ML Area: 420.95 Ha.)
at
P.O. Rawan, Tehsil-Baloda Bazar,
District-Baloda Bazar- Bhatapara, Chhattisgarh**



**M/s AMBUJA CEMENTS LTD.
(Unit: Bhatapara)
P.O.: Rawan, Dist.: Baloda Bazar - Bhatapara
Chhattisgarh - 493331, India**

Compliance Status of Environmental Clearance Conditions accorded by MoEFCC for the Expansion Project of Rawan Limestone Mine from 2.06 MTPA to 6.31 MTPA of M/s Ambuja Cements Ltd. Located at P.O. Rawan, Tehsil: Baloda Bazar, District Raipur, Chhattisgarh. Ref. no. J-11015/330/2006-IA II (M), Date: 8th June 2007

| Sr. No. | EC Conditions | Compliance Status |
|-------------------------------|--------------------------------------------------------------------------------------------------------------------------------------------------------------------------------------------------------------------------------------------------------------------------------------------------------------------------------------------------------------------------------------------------------------------------------------------------------------------------------------------------------------------------------------------------------------------------------------------------------------------------------------------------------------------------------------------------------------------------------------------------------------------------|-------------------------------------------------------------------------------------------------------------------------------------------------------------------------------------------------------------------------------------------------------------------------------------------------------------------------------------------------------------------------------------------------------------------------------------------------------------------------------------------------------------------------------------------------------------------------------------------------------------------------------------------------------------------------------------------------------------------|
| A. Specific Conditions | | |
| i. | Top soil shall be stacked properly with proper slope with adequate safeguards and shall be backfilled for reclamation and rehabilitation of mined out area. | <p>Being complied.</p> <p>Top soil is stacked separately and utilizing for reclamation and rehabilitation of mined out area and green belt development.</p> |
| ii. | Over burden shall be stacked at earmarked dump site(s) only and shall not be kept active for long period. The maximum height of the dump shall not exceed 20 m each stage shall preferably be of 10 m and over all slope of the dump shall not exceed 26°. The reverse slope shall be maintained to prevent wash off and water logging during rainy season. The mine pit area shall be reclaimed by back filling the OB in a phased manner. The OB dump shall be scientifically vegetated with suitable native species to prevent erosion and surface run off. Monitoring and management of rehabilitated areas shall continue until the vegetation becomes self-sustaining. Compliance status shall submit to the Ministry Of Environment & Forests on six month basis. | <p>Being complied.</p> <p>The overburden dumps are having maximum height of 20 m and overall slope of 26° is being maintained.</p> <p>The reverse slope is being maintained to prevent wash off and water logging during rainy season.</p> <p>The mine pit area reclamation is being done by back filling the OB in phased manner.</p> <p>The OB is stacked at non mineralized area. Inactive OB dumps are being stabilized by coir matting followed by plantation of native plant species.</p> <p>Six monthly compliance is being submitted regularly to MoEF&CC Regional Office, Nagpur.</p> <p>Last compliance report was submitted via mail dated Nov.-30, 2020 copy is enclosed as Annexure-I</p> |
| iii. | Garland drains shall be constructed to arrest silt and sediment flows from soil, and mineral dumps. The water so collected shall be utilized for watering the mine area, roads, green belt development etc. The drains shall be regularly desilted particularly after monsoon and maintained properly. Garland drain (size, gradient and length) shall be constructed for both mine pit and for waste dump and sump | <p>Complied.</p> <p>Garland drains are constructed around the dumps to arrest silt and sediment flows. The drains are connected to a settling tank and/or mine pits and accumulated water is being used for dust suppression, plantation etc.</p> <p>De-silting of garland drains is carried out at</p> |

| Sr. No. | EC Conditions | Compliance Status |
|---------|----------------------------------------------------------------------------------------------------------------------------------------------------------------------------------------------------------------------------------------------------------------------------------------------------------------------------------------------------------------------------------------------------|----------------------------------------------------------------------------------------------------------------------------------------------------------------------------------------------------------------------------------------------------------------------------------------------------------------------|
| | capacity shall be designed keeping 50% safety margin over and above peak sudden rainfall (based on 50 years data) and maximum discharge in the area adjoining the mine site. Sump capacity shall also provide adequate retention period to allow proper settling of silt material. Sedimentation pits shall be constructed at the corners of the garland drains and desilted at regular intervals. | regular intervals. Photograph is enclosed as Annexure-II . |
| iv. | Controlled drilling and blasting shall be done by using dust extractors/wet drilling. | Complied Controlled blasting using non electric delay initiation system are being practiced. Drilling is carried out with drill machines equipped with dust collector as well as water injection. Photograph is enclosed as Annexure-III . |
| v. | Plantation shall be raised in an area of 98.04 ha including green belt of adequate width by planting the native species around the ML area, roads, OB dump sites etc. in consultation with the local DFO/Agriculture Department. The density of the trees shall be around 2500 plants per ha. | Being complied. Phase wise plantation is being carried out as approved mine plan in safety zone, along roads and on inactive OB dumps as shown in Annexure IV . The density of plantation is maintained at around 2500 plants per ha. |
| vi. | The project authority shall implement suitable conservation measures to augment ground water resources in the area in consultation with the Regional Director, Central Ground Water Board. | Complied. Conservation measures to augment ground water resources in the mine area in consultation with the Regional Director, Central Ground Water Board. Rainwater accumulates in the mines pit percolate to the ground thereby recharging the ground water table, Photographs enclosed Annexure V . |
| vii. | Regular monitoring of ground water level and quality shall be carried out by establishing well and constructing new piezometers during the mining operation. The monitoring shall be carried out four times in a year-pre-monsoon (April-May), monsoon (August), Post Monsoon (November) and winter (January) and the data thus collected may be sent regularly to MOEF, | Complied Three Piezometers are established in the ML area. Ground water level and quality is being monitored Post Monsoon (November) and winter (January). Water level monitoring and water quality analysis results enclosed as Annexure-VI |

| Sr. No. | EC Conditions | Compliance Status |
|------------------------------|----------------------------------------------------------------------------------------------------------------------------------------------------------------------------------------------------------------------------------------------------------------------|------------------------------------------------------------------------------------------------------------------------------------------------------------------------------------------------------------------------------------------------------------------------------------------------------------------------------------------|
| | Central Ground Water Authority and Regional Director Central Ground Water Board. | |
| viii. | Prior permission from the competent authority shall be obtained for drawl of ground water, if any. | Complied. We have obtained the NOC from CGWA copy enclosed as Annexure-VII |
| ix. | Vehicular emissions shall be kept under control and regularly monitored. Measures shall be taken for maintenance of vehicles used in mining operations and in transportation of mineral. The vehicles shall be covered with a tarpaulin and shall not be overloaded. | Complied Transportation of mineral from crusher to plant by the fully covered belt conveyer and vehicles used for mineral transportation are maintained periodically to control exhaust emissions and all the vehicles are PUC certified. Overloading vehicles transporting minerals within the mine lease is strictly prohibited. |
| x. | A final mine closure plan, along with details of corpus fund, shall be submitted to the Ministry Of Environment & Forests 5 years in advance of final mine closure for approval. | Noted for compliance. Final mine closure plan, along with details of corpus fund, will be submitted to MoEF&CC, 5 years in advance of final mine closure. |
| B. General Conditions | | |
| i. | No change in mining technology and scope of working shall be made without prior approval of the Ministry Of Environment & Forests. | Noted and Complied No change in mining technology and scope of working will be made without prior approval of MoEF&CC. |
| ii. | No change in the calendar plan including excavation, quantum of mineral limestone ore shall be made. | Noted and Complied Limestone is being produced as per the calendar plan and EC permission. |
| iii. | Conservation measures for protection of flora and fauna in the core and buffer zone shall be drawn up in consultation with the local forest and wildlife department. | Noted and Complied. Thick plantation using local flora species is being carried out on safety zone, along transport roads and on inactive dumps with consultation of Forest Department. Fencing of the mining area is being carried out to avoid inadvertent entry of persons/animals. Plantation Survey has been conducted by |

| Sr. No. | EC Conditions | Compliance Status |
|---------|--------------------------------------------------------------------------------------------------------------------------------------------------------------------------------------------------------------------------------------------------------------------------------------------------------------------------------------------------------------------------------------------------------------------------------------------------|----------------------------------------------------------------------------------------------------------------------------------------------------------------------------------------------------------------------------------------------------------------------------------------------------------------------------------------------------------|
| | | Consultant Forest and Environment copy of Certificate is enclosed as Annexure-IV&VIII. |
| iv. | Four ambient air quality-monitoring stations shall be established in the core zone as well as in the buffer zone for RPM, SPM, SO ₂ , NO _x monitoring. Location of the stations should be decided based on the meteorological data, topographical features and environmentally and ecologically sensitive targets and frequency of monitoring should be undertaken in consultation with the State pollution Control Board. | Complied Six Ambient Air quality monitoring locations have been established in the core zone and in buffer area. Regular air quality monitoring is being carried out by NABL Accredited lab M/s SMS Envocare Ltd., Nagpur. Monitoring report is enclosed as Annexure-IX. |
| v. | Data on ambient air quality (RPM, SPM, SO ₂ and NO _x) should be regularly submitted to the Ministry including its regional office located at Bhopal and the State Pollution Control Board/ Central Pollution Control Board once in six months. | Complied Four CAAQMS installer and its connectivity given to CPCB and CECB. Ambient air quality is regularly monitored by NABL accredited Lab M/s SMS Envocare Ltd. and reports are submitted to Regional office of MoEFCC, CECB & CPCB. The air quality monitoring report for the period Oct 2020 to Mar-2021 is given in Annexure-IX. |
| vi. | Fugitive dust emissions from all the sources shall be controlled regularly. Water spraying arrangement on haul roads, loading and unloading and at transfer points shall be provided and properly maintained. | Complied Mobile water sprinklers are provided for periodic water sprinkling on haul roads and fix sprinklers installed at loading and unloading points, etc. Regular water sprinkling is being carried out at fugitive dust emission sources to control dust emissions. Photograph enclosed as Annexure-X |
| vii. | Measures shall be taken for control of noise levels below 85 dBA in the work environment. Workers engaged in operations of HEMM, etc shall be provided with ear plugs/muffs. | Complied Periodic maintenance of machinery used in mines is carried out to control noise below 85 dBA. Workers engaged in drilling & HEMM operations are provided with ear plugs/Muffs. Periodic noise level monitoring is conducted. The Ambient Noise monitoring report enclosed as Annexure-XI. |

| Sr. No. | EC Conditions | Compliance Status |
|---------|-----------------------------------------------------------------------------------------------------------------------------------------------------------------------------------------------------------------------------------------------------------------------------------------------------------------------------------|--------------------------------------------------------------------------------------------------------------------------------------------------------------------------------------------------------------------------------------------------------------------------------------------------------------------------------------------------------------------------|
| viii. | Industrial waste water (workshop and waste water from the mine) should be properly collected, treated so as to conform to the standards prescribed under GSR 422 (E) dated 19th May, 1993 and 31st December, 1993 or as amended from time to time. Oil and grease trap shall be installed before discharge of workshop effluents. | <p>Complied</p> <p>There is no process effluent generation in the mines. Effluent from workshop in the mine is treated in Oil and Grease trap system provided in the workshop. Surface run-off from the broken up area is collected in settling tank/mine pits and is used for dust suppression and plantation. Analysis report is enclosed as Annexure- XII.</p> |
| ix. | Personnel working in dusty areas shall wear protective respiratory devices and they shall also be provided with adequate training and information on safety and health aspects. | <p>Complied</p> <p>Protective Respiratory Devices (dust masks) are provided & safety appliances are being used by the workers. Shoes, dust mask, helmet & ear plug, have been provided & pre-employment and refresher safety training is being given to all the workers.</p> <p>Annexure-XIII</p> |
| x. | Occupational health surveillance program of the workers shall be undertaken periodically to observe any contractions due to exposure to dust and take corrective measures, if needed. | <p>Complied</p> <p>Occupational health surveillance program for all workers are undertaken periodically as per Mine Acts.</p> |
| xi. | A separate environmental management cell with suitable qualified personnel shall be set-up under the control of a senior executive, who will report directly to the Head of the organization. | <p>Complied</p> <p>Environmental Management Cell has been established under supervision of Environmental Manager. The Environmental Manager directly reports to the Unit Head.</p> |
| xii. | The project authorities shall inform to the Regional Office located at Bhopal regarding date of financial closures and final approval of the project by the concerned authorities and the date of start of land development work. | <p>Complied</p> <p>Annual financial closures is on 31st December</p> <ul style="list-style-type: none"> • Environmental Clearance granted by MOEF vide letter no. J-11015/330/2006-IA II (M) date:08.06.2007 • Mine is in operation since 1984. |

| Sr. No. | EC Conditions | Compliance Status |
|---------|----------------------------------------------------------------------------------------------------------------------------------------------------------------------------------------------------------------------------------------------------------------------------------------------------------------------------------------------------------------------------------------------------------------------------------------------------------------------------------------------------------------------------------------------------------------------------------------------------------------------------|------------------------------------------------------------------------------------------------------------------------------------------------------------------------------------------------------------------------------------------------------------------------------------|
| xiii. | The fund earmarked for environmental protection measures shall be kept in separate account and should not be diverted to other purpose. Year wise expenditure shall be reported to the Ministry and its regional office Bhopal. | Noted & being complied. |
| xiv | The project authorities shall inform to the Regional Office located at Bhopal regarding date of financial closures and final approval of the project by the concerned authorities and the date of start of land development work. | <p>Complied</p> <p>Annual financial closures is on 31st December</p> <ul style="list-style-type: none"> • Environmental Clearance granted by MOEF vide letter no. J-11015/330/2006-IA II (M) date:08.06.2007 • Mine is in operation since 1984. |
| xv. | The Regional Office of this Ministry located at Bhopal shall monitor compliance of the stipulated conditions. The project authorities should extend full cooperation to the officer (s) of the Regional Office by furnishing the requisite data/information/monitoring reports. | Noted. |
| xvi | A copy of clearance letter will be marked to concerned Panchayat/ local NGO, if any, from whom suggestion/representation has been received while processing the proposal. | Complied. |
| xvii. | State Pollution Control Board should display a copy of the clearance letter at the Regional Office, District Industry Centre and Collector's office/ Tehsildar's Office for 30 days. | Complied. |
| xviii | The project authorities should advertise at least in two local newspapers widely circulated, one of which shall be in the vernacular language of the locality concerned, within 7 days of the issue of the clearance letter informing that the project has been accorded environmental clearance and a copy of the clearance letter is available with the State Pollution Control Board and also at the website of the Ministry of Environment and Forests at http://envfor.nic.in and a copy of the same shall be forwarded to the Regional Office of this Ministry located in Bhopal. | <p>Complied.</p> <p>Published in Central chronical, Raipur dated 15.06.2018 and Harit Bhumi Raipur dated 15.06.2018, Copy is enclosed as Annexure-XIV</p> |

| Sr. No. | EC Conditions | Compliance Status |
|------------|-------------------------------------------------------------------------------------------------------------------------------------------------------------------------------------------------------------------------------------------------------------------------------------------------------------------------------------------------------------------------------|-------------------|
| 5. | The Ministry or any other competent authority may alter/modify the above conditions or stipulate any further condition in the interest of environmental protection. | Noted. |
| 6. | Failure to comply with any of the conditions mentioned above may result in withdrawal of this clearance and attract action under the provisions of Environment (Protection) Act, 1986. | Noted. |
| 7. | The above conditions will be enforced, inter-alia under the provisions of the Water (Prevention & Control of Pollution) Act, 1974. The Air (Prevention & Control of Pollution) Act, 1981, the Environment (Protection) Act, 1986. Hazardous Wastes(Management and Handling) Rules, 2003 and the Public (insurance) Liability Act, 1991 along with their amendments and rules. | Noted |

11/30/2020

LafargeHolcim - Production Mail - Reg. Submission of Half Yearly EC Compliance Report along with Environmental Monitoring Report fo...

Sanjay Kumar YADAVA <sanjay.yadava@ambujacement.com>

Reg. Submission of Half Yearly EC Compliance Report along with Environmental Monitoring Report for the period April to Sept-2020 for Rawan Limestone Mine.

1 message

Sanjay Kumar YADAVA <sanjay.yadava@ambujacement.com>

Mon, Nov 30, 2020 at 11:19 AM

To: apccfcentral-ngp-mef@gov.in, CPCB RD Bhopal <cpcb.bhopal@gmail.com>, Head Office CECB <hocecb@gmail.com>, Regional Officer <rocecbraipur2014@gmail.com>, ecompliance-cg@gov.in

Dear Sir/Madam

Please find the enclosed herewith the Six monthly Environment Clearance Compliance Report of stipulated conditions along with Monthly Environmental Monitoring Report (April to Sept-2020) for **Rawan Limestone Mine**. Same copy has been uploaded on the company and MOEFCC website.

This is for your kind information and record.

Thanks & Regards

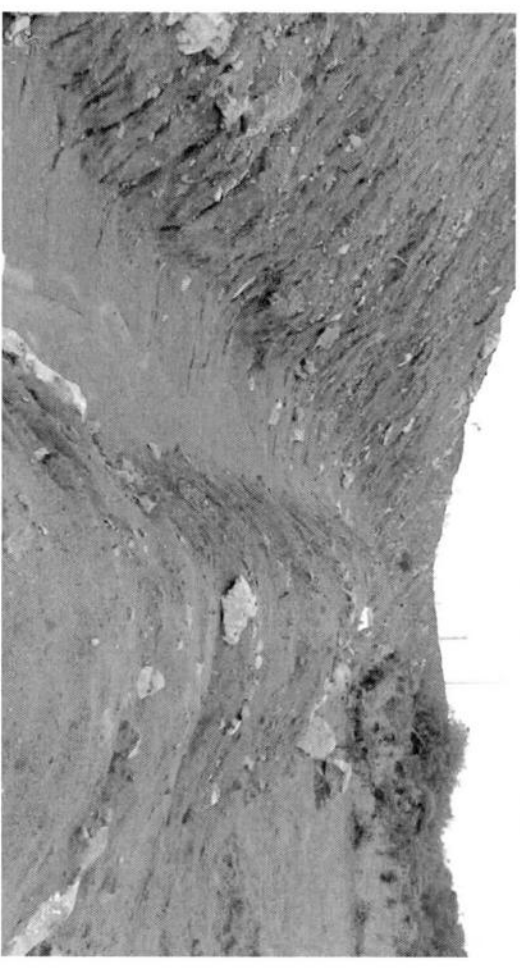
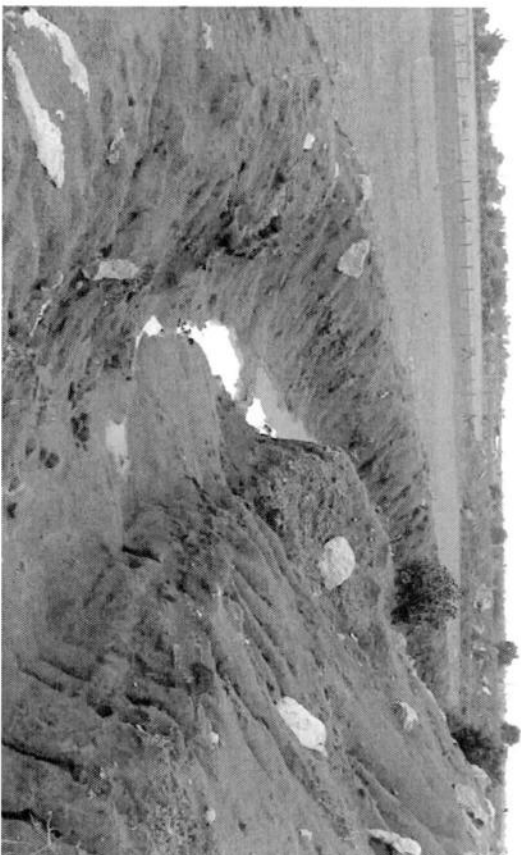
Sanjay Yadav
Environment Dept.
Ambuja Cements Ltd. Unit - Bhatapara,
Dist: Baloda BazaBhatapara, Chhattisgarh
Mobile - 8982073666
www.ambujacement.com



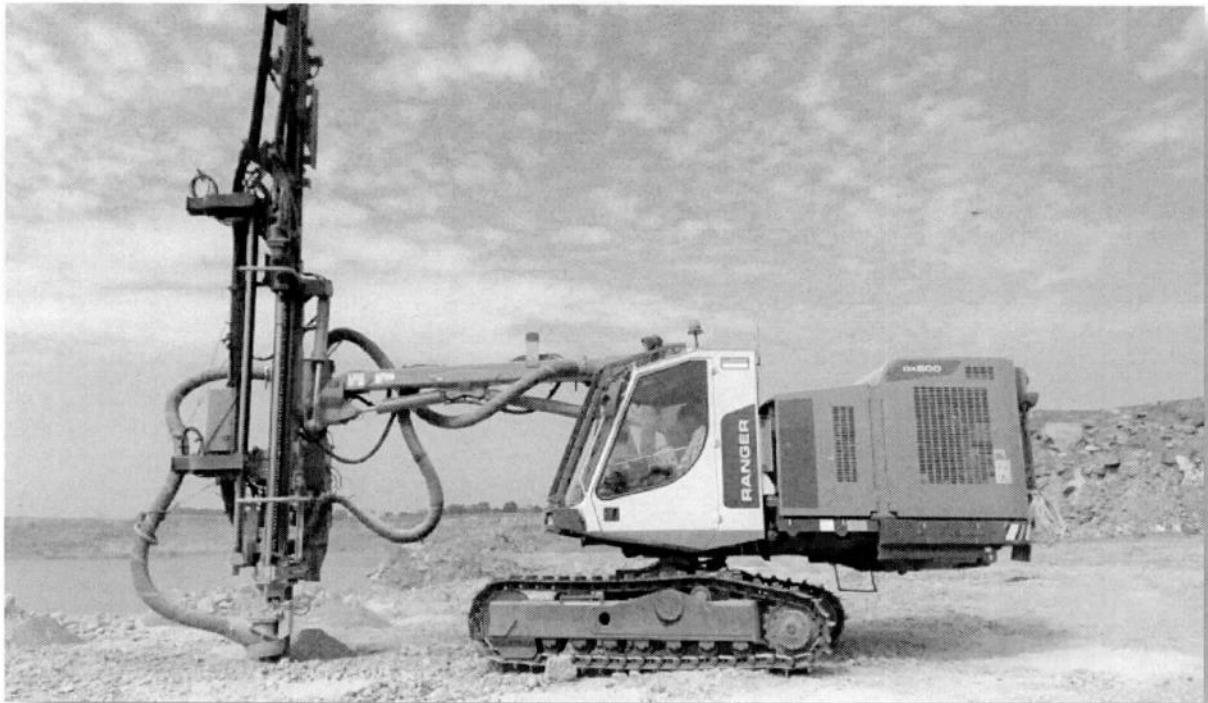
Bhatapara-Rawan Limestone Mines- Half Yearly EC Compliance Report-April-Sept 2020.pdf

1913K

Garland Drain and Slope Stability in Dump



Annexure-III



PLANTATION DETAILS YEARWISE (RAWAN LIMESTONE MINE)

| Year of Plantation | No. of trees planted | | No. of trees survived | | Survial(%) | Area covered (Ha) |
|--------------------|----------------------|--|-----------------------|--|------------|----------------------------------------------|
| | Within ML | | Within ML | | Within ML | Within ML |
| 2006-2007 | 8000 | | 6800 | | 85 | 3.20 |
| 2007-2008 | 5770 | | 4327 | | 75 | 3.06 |
| 2008-2009 | 2300 | | 1380 | | 60 | 1.08 |
| 2009-2010 | 1600 | | 1184 | | 74 | 1.30 |
| 2010-2011 | 1600 | | 1488 | | 93 | 1.07 |
| 2011-2012 | 2230 | | 1070 | | 48 | 1.39 |
| 2012-2013 | 1000 | | 770 | | 77 | 1.63 |
| 2013-2014 | 1000 | | 770 | | 77 | 1.63 |
| 2014-2015 | 6106 | | 4800 | | 79 | 1.55 |
| 2015-2016 | 1743 | | 1650 | | 95 | 0.22 |
| 2016-2017 | 2890 | | 2456 | | 85 | 1.50 |
| 2017-2018 | 1773 | | 1470 | | 83 | infilling (dump) approx 2.00 Hectare area |
| 2018-2019 | 2500 | | 2144 | | 86 | infilling (dump) approx 1.50 Hectare area |
| 2019-2020 | 1500 | | 1278 | | 85 | infilling (dump) approx 1.50 Hectare area |
| 2020-2021 | 1500 | | 1050 | | 70 | infilling (dump) approx 1.50 Hectare area |
| Total | 41512 | | 32637 | | 79 | 17.62 |

| S.No. | Common name | Botanical name | S.No. | Common name | Botanical name |
|-------|-----------------------------|-----------------------|-------|------------------------------|--------------------------|
| 1 | African Tulip Tree | Spathodea Campanulata | 36 | Khair | Senegalia catechu |
| 2 | Alstonia (Chatim) | Alstonia scholaris | 37 | Karanj | Pongamia Glabra |
| 3 | Amaltas | Cassia fistula spp. | 38 | Karounda | Carissa carandus |
| 4 | Anar | Punica granatum | 39 | Kathal (Jack Fruit) | Artocarpus Heterophyllus |
| 5 | Arjuna | Terminalia arjuna | 40 | Kaner (Oleander & Nerium) | Theveatia Peruviana |
| 6 | Ashok Tree | Polyalthia longifolia | 41 | Khamhar | Gemelina arborea |
| 7 | Australian Accasia | Acasia Auriculiformis | 42 | Mango | Mangifera indica |
| 8 | Anola | Embbica Officinalis | 43 | Mahua | Madhuca longifolia |
| 9 | Babul desi | Acacia nilotica | 44 | Maharukh (Mhaneem) | Ailanthus excelsa |
| 10 | Bel | Aegle marmelos | 45 | Musambi | Citrus sinensis |
| 11 | Bair | Ziziphus jujubai | 46 | Munga (Drum Stick) | Moringa oleifera |
| 12 | Bakayan | Melia azedarach | 47 | Mudhi | Mitragyna parvifolia |
| 13 | Babmboo | Phyllostachys | 48 | Neebu | Citrus limon Burma |
| 14 | Bargad (Banyan Tree) | Ficus Bengalensi | 49 | Neel Giri (Safeda) | Eucalyptus |
| 15 | Bottel brush (Scarlet) | Callistemon Citrinus | 50 | Neem | Azadirachta Indica |
| 16 | Bohar tree | Cordia myxa | 51 | Pelto Phorum | Peltophorum enerme |
| 17 | Cassia Saimea (Chakundi) | Cassia saimea | 52 | Palash (Dhak) | Butea frandosa |
| 18 | Casurina | Casurina indica | 53 | Palm tree (Bottel palm) | Palm tree |
| 19 | Chakotra | Achras zapota | 54 | Pangara | Earythrena indica |
| 20 | Chikoo (Sapota) | Achras Sapota | 55 | Putranjeeva (Luck Bean Tree) | Putrangiva roxburghi |
| 21 | Champa | Michelia champaka | 56 | Pipal | Ficus Religiosa |
| 22 | Coral plant | Tecoma gudichauri | 57 | Samal tree (Semhra) | Bombax ceiba |
| 23 | Coconut | Cocos nucifera | 58 | Seetaphal | Annona cherimola |
| 24 | Dhanbahar | Cassia festula | 59 | Siris | Albizia Labeck |
| 25 | Desi Badam | Terminalia catappa | 60 | Shahtut (Mulberry) | Morus Alba / Nigra |
| 26 | Guava | Psidium guajava | 61 | Sisoo | Dalbergia Sisoo |
| 27 | Gul Mohar | Delonix regia | 62 | Subabool | Leucena Leucocehalla |
| 28 | Gliricidia | Gliricidia Masculata | 63 | Saja | Terminalia tomentosa |
| 29 | Gandhraj | Gardenia | 64 | Sagon (Teak) | Tectona Grandis |
| 30 | Gangaemli | Pithecellobium dulce | 65 | Safed siras(Karhi) | Albizzia procera, benth |
| 31 | Gular (Dumar) | Ficus racemosa | 66 | Tikoma | Dhobi podha |
| 32 | Imli | Temredus indica | 67 | Vilayati kiker | Prosopis juliflora |
| 33 | Jamun | Ujinia jaimbolana | 68 | White semal (Kpok Tree) | Ceiba pentandra |
| 34 | Kachanar | Bauhinia variegata | 69 | Laxmi taru | Simarouba glauca |
| 35 | kadamba | Anthocepholus kadamba | | | |



CONSERVATION MEASURES TO AUGMENT GROUND WATER



AMBUJA CEMENTS LIMITED, UNIT: BHATAPARA**RAWAN LIMESTONE MINES**
GROUND WATER MONITORING REPORT**FOR THE QUARTER ENDING DEC-2020 (FROM October -2020 to December -2020)**

| STATION NO. | NAME OF VILLAGE & CITY | Water level Oct - 2020 | Water level Nov- 2020 | Water level Dec - 2020 |
|--------------------|-----------------------------------|-------------------------------|------------------------------|-------------------------------|
| 1 | Khamariya | 9.27 | 8.10 | 7.84 |
| 2 | Topa | 6.21 | 5.96 | 5.76 |
| 3 | Arjuni | 10.50 | 10.13 | 9.70 |
| 4 | Maldi | 8.53 | 8.35 | 8.16 |
| 5 | Devrani | 2.04 | 2.41 | 2.75 |
| 6 | Mopar | 3.51 | 3.18 | 2.84 |
| 7 | Rawan | 5.85 | 5.00 | 4.15 |
| 8 | Karmada | 2.01 | 1.55 | 1.07 |
| 9 | Pausari | 6.86 | 6.43 | 5.99 |
| 10 | Chhuiha | 3.00 | 3.68 | 3.94 |
| 11 | Baloda Bazar | 7.02 | 5.89 | 4.75 |
| 12 | Latua | 6.06 | 6.03 | 5.99 |
| 13 | Dhabadih | 10.96 | 10.90 | 10.84 |
| 14 | Magarchaba | 1.75 | 1.94 | 2.11 |
| 15 | Amera | 3.71 | 3.78 | 3.81 |
| 16 | Risda | 5.11 | 5.03 | 4.94 |
| 17 | Chanpa | 7.63 | 7.12 | 6.59 |
| 18 | Semaradih | 10.17 | 9.69 | 9.20 |
| 19 | Chandih | 3.66 | 3.51 | 3.36 |
| 20 | Khelwari | 9.09 | 7.59 | 6.09 |
| 21 | Kukurdi | 6.87 | 5.76 | 4.58 |


Bhavin Kumar Suthar
Manager (Rawan Limestone Mines)

AMBUJA CEMENTS LIMITED, UNIT: BHATAPARA

MALDI-MOPAR LIMESTONE MINES **GROUND WATER MONITORING REPORT**

FOR THE QUARTER ENDING MARCH-2021 (FROM January -2021 to March 2021)

| Station No. | Location | Water level Jan - 2021 | Water level Feb - 2021 | Water level March - 2021 |
|--------------------|-----------------|-------------------------------|-------------------------------|---------------------------------|
| 1 | Khamariya | 8.12 | 7.23 | 5.95 |
| 2 | Topa | 6.03 | 5.36 | 4.56 |
| 3 | Arjuni | 7.23 | 4.71 | 5.10 |
| 4 | Maldi | 7.01 | 6.28 | 5.20 |
| 5 | Devrani | 5.12 | 3.66 | 1.63 |
| 6 | Mopar | 3.15 | 0.78 | 0.31 |
| 7 | Rawan | 5.31 | 4.64 | 3.38 |
| 8 | Karmada | 2.06 | 1.59 | 0.19 |
| 9 | Pausari | 6.98 | 6.51 | 5.78 |
| 10 | Chhuiha | 4.95 | 2.42 | 1.22 |
| 11 | Baloda Bazar | 5.56 | 4.75 | 4.27 |
| 12 | Latua | 7.73 | 4.44 | 2.43 |
| 13 | Dhabadih | 8.41 | 6.13 | 4.98 |
| 14 | Magarchaba | 3.62 | 0.78 | 0.51 |
| 15 | Amera | 5.67 | 2.38 | 1.30 |
| 16 | Risda | 5.73 | 3.54 | 2.23 |
| 17 | Champa | 7.15 | 5.43 | 4.35 |
| 18 | Semaradih | 8.30 | 7.99 | 7.30 |
| 19 | Chandih | 4.52 | 0.42 | 0.31 |
| 20 | Khelwari | 7.30 | 7.58 | 6.71 |
| 21 | Kukurdi | 5.29 | 5.37 | 3.87 |

f. GramePR.

Bhavin Kumar Suthar
Manager (Rawan Limestone Mines)



**NANDAKUMARAN P
MEMBER SECRETARY**

भारत सरकार
जल शक्ति मंत्रालय
जल संसाधन, नदी विकास
और गंगा संरक्षण विभाग
भूमि जल प्राधिकरण

Government of India
Ministry of Jal Shakti
Department of Water Resources,
River Development and Ganga Rejuvenation
Central Ground Water Authority

CGWA/IND/Proj/2019-375-R

No.21-4(117)/NCCR/CGWA/2011- 762

Dated:- 05 SEP 2019

To

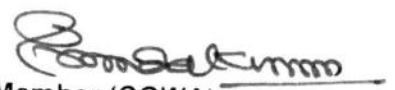
✓ M/s Ambuja Cements Ltd.,
(Unit-Bhatapara), Village & P.O. - Rawan
Block & Tehsil- Balodabazar
Dist- Balodabazar: Bhatapara, Chhattisgarh - 493331

Sub: - Renewal of NOC for ground water withdrawal to M/s Ambuja Cements Ltd., for their existing Integrated cement manufacturing, captive power plant and Limestone Mine located at Villages Rawan, Kukurdih, Pausari and Bharseli, Block & Tehsil Balodabazar, District Balodabazar: Bhatapara, Chhattisgarh - reg.

Refer to your application dated 31/10/2018 on the above cited subject. Based on recommendation of Regional Director, Central Ground Water Board, North Central Chhattisgarh Region, Raipur vide his office letter No 35-1/NCCR/CGWA/Vol-XI- 818 dated 17/06/2019, and further deliberations on the subject, the NOC issued to **M/s Ambuja Cements Ltd., for their existing Integrated cement manufacturing, captive power plant and Limestone Mine located at Villages Rawan, Kukurdih, Pausari and Bharseli, Block & Tehsil Balodabazar, District Balodabazar: Bhatapara, Chhattisgarh** vide this office letter of even no. dated 06/11/2015 is hereby renewed. The earlier NOC issued vide Letter No. 21-4(117)/NCCR/CGWA/2011-1739 dated 06/11/2015 shall be deemed to be extended from 05/11/2018 to 25/07/2019 and the renewed NOC shall be valid from 26/07/2019 to 25/07/2024 and shall be subject to the following conditions:-


1. The firm may continue to abstract **1,11,325 cu.m/year** of ground water through twelve (12) existing bore wells only and **18,47,225 cu.m/year** through dewatering of mine seepage on account of mining intersecting the water table during the mining operation. The total withdrawal from bore wells and dewatering shall not exceed **19,58,550 m3/year**. No additional ground water abstraction structures shall be constructed for this purpose without prior approval of the CGWA.

2. All the wells shall be fitted with digital water flow meters and monthly ground water abstraction data of each well shall be recorded in a log book by the firm.
3. **M/s Ambuja Cements Ltd.**, shall continue to implement ground water recharge measures to the tune of **5,30,188 m³/year** for augmenting the ground water resources of the area. Firm shall also undertake periodic maintenance of recharge structures at its own cost.
4. The firm shall continue to execute monthly ground water level monitoring in the project area through two (2) nos. of existing piezometers. The firm shall install digital water level recorders in both the existing piezometers. Firm shall install telemetry system in one of the piezometers and share user ID and password of the telemetry system with the Regional Director, Central Ground Water Board, North Central Chhattisgarh Region, Raipur.
5. The ground water quality shall be monitored once in a year during pre monsoon period.
6. The ground water monitoring data in respect of S. No. 2, 4, & 5 shall be submitted to the Regional Director, Central Ground Water Board, North Central Chhattisgarh Region, Raipur on regular basis at least once in a year.
7. The firm shall ensure proper recycling and reuse of waste water after adequate treatment.
8. The firm shall submit report on impact of ground water abstraction on the ambient ground water regime within six months of the renewal of NOC.
9. Action taken report in respect of S.N o. 1 to 8 shall be submitted to CGWA within one year period.
10. The NOC is liable to be cancelled in case of non-compliance of any of the conditions as mentioned in S. No. 1 to 9.
11. The project proponent shall take all necessary measures to prevent contamination of groundwater in the premises failing which the firm shall be responsible for any consequences arising there upon.
12. This NOC is subject to prevailing Central/State Government rules/laws or Court orders related to construction of tubewell/ground water withdrawal/construction of recharge or conservation structures/discharge of effluents or any such matter as applicable.
13. This NOC does not absolve the applicant / proponent of his obligation / requirement to obtain other statutory and administrative clearances from other statutory and administrative authorities.
14. The NOC does not imply that other statutory / administrative clearances shall be granted to the project by the concerned authorities. Such authorities would consider the project on merits and be taking decisions independently of the NOC.


Member (CGWA)

Copy to:

1. The Member Secretary, Chhattisgarh Environment Conservation Board, Paryavas Bhavan, North Block Sector-19, Naya Raipur, Chhattisgarh.
2. The District Collector & Magistrate, District Balodabazar, Chhattisgarh for necessary action.
3. The Director, Ministry of Environment & Forests, Paryavaran Bhawan, CGO Complex, Lodhi Road, New Delhi-110003
4. The Regional Director, Central Ground Water Board, North Central Chhattisgarh Region, Raipur. This has reference to your recommendation dated 17/06/2019.
5. Guard File 2019-20.


Member (CGWA)

Certificate

This is to certify that M/s Ambuja Cements Limited was inspected on 14 June 2016. It was found that plantation of trees in its Plant and Mines area as well as along State Roads is as per guidelines issued by Chhattisgarh Environment Conservation Board, Raipur, and Ministry of Environment and Forests. The required area is covered with variety of trees with safety and protection measures well in place. The salient features observed during the course of inspection are as follows.

1. 79.65 Hectares is covered with Green Belt out of 238.97 Hectare area in the plant premises which is more than 33% of Plant Area.
2. 36.2 Hectares is covered with Green Belt in Mines.
3. Over 30,000 saplings of Neem, Shisham, Jamun, Kadam, Karanj etc have been planted along Baloda Bazar – Bhatapara road as also around several villages, notably Bharseli and Kukurdi in the years 2014 and 2015. The survival percentage for the mentioned plantation is over 90%.

Place: Raipur

Date: 28-06-2016

(C. M. Shakeel)

C.M. SHAKEEL
Consultant
Forests & Environment
Raipur (C.G.)

BIODIVERSITY ACTION PLAN BHATAPARA

1. Introduction: Biological diversity or “biodiversity” has been defined as: “The variability among living organisms from all sources including Inter alia and Terrestrial other Aquatic Ecosystems and the Ecological Complexes of which they are part; this includes diversity within species, between species, and of Ecosystems”. Chhattisgarh State, lying in the Vindhyan hill regions and Deccan plateau in central India, has over 44% of its land area under forests and is rich in biodiversity. 7.8 Million indigenous and tribal communities eke out their livelihood from these forests and biological resources. Diversity within species (or genetic diversity) refers to variability in the functional units of heredity present in any material of plant, animal, microbial or other origin. Species diversity is used to describe the variety of Ecosystem diversity refers to the enormous variety of plant, animal and micro organism communities and ecological processes that make them function. This variety provides the building blocks to adapt to changing environmental conditions in the future. Ambuja Cement Ltd. Unit Bhatapara, Chhattisgarh, set up cement plant, Environment Clearance granted by MOEFCC, New Delhi as given in the table:

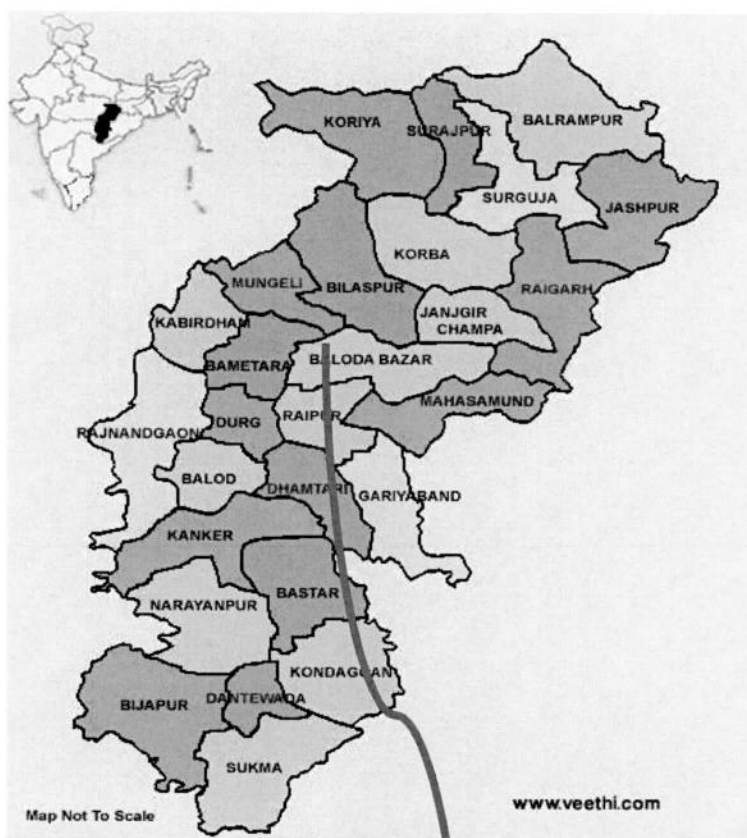
| Sr.No. | EC No. | Purpose | Date issued | Area (Ha.) |
|--------|---------------------------|------------------------------------------------------------------------|-------------|------------|
| 1 | J-11011/72/2009-IA-II(I) | Amendment in EC of Cement capacity from 1.8 MTPA to 2.9MTPA to 3.5MTPA | 13.05.2011 | 238.97 |
| 2 | J-11011/330/2006-IA-II(I) | Rawan Lime Stone Mines from 2.06MTPA to 6.31 MTPA | 08.06.2007 | 420.95 |
| 3 | J-11015/252/2008-IA-II(I) | 2.0 MTPA Maldi Mopar Mines | 13.08.2010 | 553.656 |

2. Objective:

- a. Action plan for Conservation of biodiversity
- b. Study of biodiversity
- c. BIR assessment in 2019

BIRS assessment carried out in Dec, 2017 resulted in a baseline score (Site Biodiversity Index) of 1.7 at Bhatapara. Through implementation of BAP activities, location team will strive to make a positive change on Biodiversity (reflected in a higher score) which will periodically assessed every two year (due in 2019) through BIRS. All concerned functions/departments will act in a co-ordinated manner to achieve the goal to make a positive change on biodiversity.

3. Study Area:



Satellite Image of plant, Colony and Mines

4. Climate and Rainfall: The climate of Chhattisgarh is tropical. It is hot and humid because of its proximity to the Tropic of Cancer and its dependence on the monsoons for rains. Bhatapara's climate is also classified as tropical. The summers here have a good deal of rainfall, while the winters have very little. The climate here is classified as Aw by the Koppen-Geiger system. In Bhatapara, the average annual temperature is 26.9 °C. The average annual rain fall in the area is 1094 mm with approximate 65 rainy days. Summer temperatures can reach 45°C(113 °F). The monsoon season is from late June to October. Winter is from November to January. Winters are pleasant with low temperatures (13⁰ C) and less humidity.

5. Action Plan: Biodiversity action plan at Bhatapara is based on the above studies and approvals. Action points are drawn from the two conservation plans. Additional action points are added in the list of activities wherein ACF attempts to conserve biodiversity of area through different internal activities through ACF, Mining department and Environment department as well as contributing to government and Non-Government efforts towards conservation. ACL will look for opportunities to join hands with Government and Non-Government organizations for identifying and implementing some actions on voluntary basis. BAP will be reviewed from time to time through internal and external consultations to make this plan more robust. BAP has been prepared with special focus on protection of existing habitat within and outside the Sanctuary and rehabilitation / improvement of surrounding areas and degraded habitats with a view to ensure the Biodiversity in the vicinity of the project site (plant and mine). Local community is an important stakeholder and potential driver of conservation efforts are being considered by ACL for long term success. There is good scope for ACF to rope in community help in implementation of BAP through formation of Self-Help Groups and other such activities. ACF has commitment in community involvement (major stakeholder) and protection of environment is obviously discernible given the fact that it has been engaged in organizing the poor women in to Self-Help Groups in and around the project sites. Self Help Groups mean any organized group of persons who are collectively by mutual help are able to enhance their economic status through resource based activities. Formation and strengthening of SHG shall provide an opportunity to these stakeholders to enhance their income and also reduce their dependence on natural resource base to some extent. Awareness creation on biodiversity conservation for community and ACL workforce shall also be intensified

Butterfly Park Project, Fruit bearing Species Post Plantation care, water arrangement, Fire Management to prevent any fire on forest habitat, Fencing to the Lease boundary to prevent animal and human encroachment, Aquatic Plant development/marsh grasses planted around the edge of a pond, Artificial Birds nesting Project, Water features on Quarry slope, Tree Transplantation Proposal, Strengthening of existing self-help groups of rural poor and women and formation of New SHG, Implementation of income generation program to address the livelihood needs of the local people through income generation activities based on micro plans. Providing energy saving devices, Immunization of livestock to control spread of disease in local community, Capacity building of wild life staff and local communities through competence based training, Minimize soil erosion through water harvesting structure in local community.

Ambuja Cements Ltd. Six Monthly Ambient Air Monitoring Report

(Oct -2020 to Mar-2021)

| Ambient Air Monitoring Report of month Oct-2020 | | | | | | Ambient Air Monitoring Report of month –Nov-2020 | | | | | |
|--------------------------------------------------|---------------------------------------------|----------------------------------------------|--------------------------------------------|-----------------------------|----------------------------|--------------------------------------------------|---------------------------------------------|----------------------------------------------|--------------------------------------------|--------------------------------|-------------------------|
| Monitoring Station | PM ₁₀ (100µg/m ³) | PM _{2.5} (60 µg/m ³) | SO ₂ (80 µg/m ³) | NOx (80 µg/m ³) | CO (mg/m ³) | Monitoring Station | PM ₁₀ (100µg/m ³) | PM _{2.5} (60 µg/m ³) | SO ₂ (80 µg/m ³) | NOx (80 µg/m ³) | CO (mg/m ³) |
| Rawan Mines Office | 51.8-62.8 | 22.6-28.4 | 6.3-11.48 | 24.1-32.1 | 1.65-2.87 | Rawan Mines Office | 65.2-78.7 | 27.2-36.9 | 9.4-14.7 | 19.6-25.7 | 1.2-3.6 |
| Bhatagaon | 50.7 | 14.8 | 9.7 | 22.9 | 2.06 | Bhatagaon | 59.4 | 21.6 | 11.5 | 25.6 | 3.06 |
| Turna | 53.1 | 16.7 | 6.1 | 16.7 | 0.84 | Turna | 58.2 | 21.5 | 7.2 | 19.1 | 1.04 |
| Rawan | 59.7 | 20.6 | 11 | 26.3 | 2.88 | Rawan | 66.9 | 25.7 | 13.4 | 22.6 | 2.4 |
| Dhandhani | 59.2 | 24.4 | 9.6 | 17.2 | 1.6 | Dhandhani | 62.1 | 28.4 | 11.1 | 23.6 | 2.06 |
| Chhuiha | 55.6 | 16.1 | 13.7 | 24.7 | 2.58 | Chhuiha | 58.4 | 21.7 | 12.1 | 23.6 | 3.06 |
| Purena | 62.3 | 21.6 | 8.3 | 21.2 | 1.95 | Purena | 63.5 | 27.7 | 10.1 | 16.6 | 2.64 |
| Arjuni | 66.1 | 25.69 | 10.13 | 27.2 | 1.87 | Arjuni | 74.7 | 24.7 | 11.6 | 25.5 | 2.4 |
| Ambient Air Monitoring Report of month –Dec-2020 | | | | | | Ambient Air Monitoring Report of month –Jan-2021 | | | | | |
| Monitoring Station | PM ₁₀ (100µg/m ³) | PM _{2.5} (60 µg/m ³) | SO ₂ (80 µg/m ³) | NOx (80 µg/m ³) | CO (mg/m ³) | Monitoring Station | PM ₁₀ (100µg/m ³) | PM _{2.5} (60 µg/m ³) | SO ₂ (80 µg/m ³) | NOx (80 µg/m ³) | CO (mg/m ³) |
| Rawan Mines Office | 67.6-75.2 | 23-31.9 | 7.3-12.5 | 18.3-25.6 | 1.25-2.65 | Rawan Mines Office | 69.3-77.2 | 26.9-35.7 | 5.3-8.3 | 15.3-24.2 | 1.98-3.14 |
| Bhatagaon | 62.5 | 26.7 | 9.7 | 29.6 | 2.49 | Bhatagaon | 69.6 | 33.2 | 7.6 | 23.6 | 3 |
| Turna | 62.4 | 27.5 | 8.2 | 22.6 | 1.34 | Turna | 69.4 | 30.5 | 6.2 | 20.4 | 1.56 |
| Rawan | 64.8 | 22.9 | 10.7 | 25.6 | 2.05 | Rawan | 68.4 | 18.2 | 6.2 | 20.3 | 2.6 |
| Dhandhani | 55.2 | 21.4 | 9.6 | 24.1 | 2.68 | Dhandhani | 58.2 | 24.3 | 7.5 | 19 | 1.22 |
| Chhuiha | 62.4 | 26.9 | 9.7 | 20.5 | 2.54 | Chhuiha | 65.4 | 36.6 | 6.5 | 18.4 | 3.01 |

| Purena | 69.5 | 22.5 | 7.7 | 19.8 | 3.54 |
|--------------------------------------------------|---------------------------------------------|----------------------------------------------|--------------------------------------------|-----------------------------|----------------------------|
| Arjuni | 76.2 | 26.4 | 9.6 | 23.5 | 2.87 |
| Ambient Air Monitoring Report of month –Feb-2021 | | | | | |
| Monitoring Station | PM ₁₀ (100µg/m ³) | PM _{2.5} (60 µg/m ³) | SO ₂ (80 µg/m ³) | NOx (80 µg/m ³) | CO (mg/m ³) |
| Rawan Mines Office | 55.18-71.34 | 21.08-28.44 | 4.25-7.01 | 17.64-21.64 | 1.42-2.67 |
| Bhatagaon | 57.15 | 21.14 | 04.22 | 18.04 | 2.84 |
| Turma | 65.18 | 26.47 | 5.02 | 19.34 | 1.81 |
| Rawan | 57.15 | 12.33 | 04.26 | 17.25 | 2.05 |
| Dhandhani | 62.33 | 23.84 | 05.64 | 17.41 | 2.05 |
| Chhuiha | 58.62 | 27.34 | 4.15 | 16.24 | 2.25 |
| Purena | 55.2 | 18.36 | 3.51 | 16.08 | 2.05 |
| Arjuni | 61.24 | 24.33 | 05.15 | 17.05 | 2.65 |

| Purena | 72.1 | 26.5 | 4.1 | 17.5 | 2.8 |
|--------------------------------------------------|---------------------------------------------|----------------------------------------------|--------------------------------------------|-----------------------------|-------------------------|
| Arjuni | 79.4 | 36.5 | 8.1 | 18.3 | 3.2 |
| Ambient Air Monitoring Report of month –Mar-2021 | | | | | |
| Monitoring Station | PM ₁₀ (100µg/m ³) | PM _{2.5} (60 µg/m ³) | SO ₂ (80 µg/m ³) | NOx (80 µg/m ³) | CO (mg/m ³) |
| Rawan Mines Office | 68.95-79.55 | 20.34-28.24 | 4.36-7.14 | 22.23-27.11 | 1.98-3.51 |
| Bhatagaon | 61.03 | 18.67 | 04.57 | 20.16 | 2.06 |
| Turma | 60.15 | 20.54 | 4.69 | 20.36 | 2.03 |
| Rawan | 65.41 | 17.62 | 04.74 | 20.61 | 2.61 |
| Dhandhani | 68.51 | 26.41 | 05.22 | 18.67 | 2.57 |
| Chhuiha | 60.27 | 23.51 | 4.03 | 17.54 | 2.68 |
| Purena | 55.2 | 18.36 | 3.51 | 15.08 | 2.05 |
| Arjuni | 61.24 | 24.33 | 5.15 | 17.05 | 2.65 |

Water sprinklers

Annexure-X



Annexure-XI

Ambuja Cements Ltd. Six Monthly AMBIENT NOISE LEVEL REPORT OF MONTH Oct -2020 to Mar-2021

| S.N | MONTH | Oct-20 | | Nov-20 | | Dec-20 | |
|-----|-----------------------------------|------------------|-----------------|------------------|-----------------|------------------|-----------------|
| | Location | Noise Level (dB) | | Noise Level (dB) | | Noise Level (dB) | |
| 0. | | Day Time Leq. | Night Time Leq. | Day Time Leq. | Night Time Leq. | Day Time Leq. | Night Time Leq. |
| 1 | Rawan Lime stone North Block area | 58.69 | 52.22 | 55.1 | 52.1 | 60.44 | 51.84 |
| 2 | Rawan Lime stone South Block area | 53.57 | 50.56 | 52.2 | 49.3 | 55.69 | 49.22 |
| 3 | TURMA village | 46.38 | 39.54 | 49.7 | 44 | 48.23 | 40.28 |
| 4 | DHANDANI village | 42.5 | 35.68 | 46.8 | 39 | 48.68 | 42.74 |
| 5 | Ambuja colony | 43.1 | 38.26 | 45.7 | 40.6 | 41.87 | 36.48 |
| 6 | Arjuni village | 43.8 | 38.14 | 46.5 | 41.2 | 45.74 | 39.25 |
| 7 | Bhatagoan village | 38.6 | 34.4 | 42.9 | 37.8 | 40.58 | 36.47 |

| S.N O. | MONTH | Jan-21 | | Feb-21 | | Mar-21 | |
|-----------|-----------------------------------|------------------|-----------------|------------------|-----------------|------------------|-----------------|
| | Location | Noise Level (dB) | | Noise Level (dB) | | Noise Level (dB) | |
| | | Day Time Leq. | Night Time Leq. | Day Time Leq. | Night Time Leq. | Day Time Leq. | Night Time Leq. |
| 1 | Rawan Lime stone North Block area | 58.41 | 55.41 | 56.64 | 54.22 | 55.13 | 53.41 |
| 2 | Rawan Lime stone South Block area | 57.69 | 48.74 | 53.32 | 49.54 | 56.54 | 49.15 |
| 3 | TURMA village | 45.15 | 42.55 | 48.03 | 43.24 | 46.71 | 40.21 |
| 4 | DHANDANI village | 46.35 | 40.67 | 44.27 | 42.12 | 47.27 | 41.68 |
| 5 | Ambuja colony | 43.51 | 39.52 | 45.36 | 42.15 | 46.82 | 43.58 |
| 6 | arjuni village | 44.38 | 40.87 | 45.08 | 41.44 | 47.69 | 43.57 |
| 7 | Bhatagoan village | 43.27 | 38.41 | 45.17 | 39.45 | 46.14 | 41.25 |

| Norms** | Industrial area | 75 | 70 |
|---------|------------------|----|----|
| | Commercial area | 65 | 55 |
| | Residential area | 55 | 45 |
| | Silence Zone | 50 | 40 |

Annexure- XII

M/s Ambuja Cements Ltd. Six Monthly ETP, STP and Mine water REPORT OF MONTH Oct-20 to Mar-21

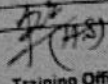
| MONTH | | Oct-20 | | | | | Nov-20 | | | | | Dec-20 | | | | |
|--------|---------------------------------|--------|------------|------------|---------------------|-----------|--------|------------|------------|---------------------|-----------|--------|------------|------------|---------------------|-----------|
| S. No. | Test Parameters Location | pH | COD (mg/l) | BOD (mg/l) | Oil & Grease (mg/l) | SS (mg/l) | pH | COD (mg/l) | BOD (mg/l) | Oil & Grease (mg/l) | SS (mg/l) | pH | COD (mg/l) | BOD (mg/l) | Oil & Grease (mg/l) | SS (mg/l) |
| | Norms | 5.5-9 | 30 | 250 | 10 | 100 | 5.5-9 | 30 | 250 | 10 | 100 | 5.5-9 | 30 | 250 | 10 | 100 |
| 1 | Rawan Mines Work Shop (treated) | 7.25 | 16.0 | 8.0 | 0.5 | <4.0 | 8.17 | 12 | 6 | 0.7 | <4 | 7.63 | 16 | 8 | 0.5 | <4 |
| MONTH | | Jan-21 | | | | | Feb-21 | | | | | Mar-21 | | | | |
| S. No. | Test Parameters Location | pH | COD (mg/l) | BOD (mg/l) | Oil & Grease (mg/l) | SS (mg/l) | pH | COD (mg/l) | BOD (mg/l) | Oil & Grease (mg/l) | SS (mg/l) | pH | COD (mg/l) | BOD (mg/l) | Oil & Grease (mg/l) | SS (mg/l) |
| | Norms | 5.5-9 | 30 | 250 | 10 | 100 | 5.5-9 | 30 | 250 | 10 | 100 | 5.5-9 | 30 | 250 | 10 | 100 |
| 1 | Rawan Mines Work Shop (treated) | 7.5 | 12 | 3 | 0.4 | <4 | 7.37 | 16 | 3 | 0.3 | <4 | 7.31 | 12 | 3 | 0.3 | <4 |

Annexure - XIII

| Ambuja Cements Limited Unit Bhatapara | | Programme Attendance | | Group VT Center | |
|-----------------------------------------------------|--------------------|----------------------|------------|--------------------|-----------|
| Programme Detail | | Basic & Refresher | | | |
| Title: Quarry Safety & Working Near Water | | Date: 08/10/2020 | | | |
| Duration | | Batch No # | | | |
| Faculty: | | Venue: | | | |
| # | Name | Designation | Empl. Code | Department | Signature |
| 01 | Chaitan | | | | |
| 02 | Rajmish | | | | |
| 03 | Shankar Ghauran | | | | |
| 04 | Devgandam Anshu | | | | |
| 05 | Rubin Dey | | | | |
| 06 | Krishna Kumarisati | | | | |
| 07 | Ipokhan M Verma | H.E.M.O | 8954 | mining | |
| 08 | Rajan Rana Verma | - II - | 4012 | - II - | |
| 09 | RAMESH SHAH | H.M.O | 2003932 | mining | |
| 10 | OMPRAKASH SINGH | H.E.M.O | 2003913 | mining | |
| 11 | S.N. GRI | H.E.M.O.P | 2003792 | mining | |
| 12 | NARESH NAIDU | H.E.M.O.P | 2003929 | - II - | |
| 13 | | | | | |
| 14 | | | | | |
| 15 | | | | | |
| 16 | | | | | |
| 17 | | | | | |
| 18 | | | | | |
| 19 | | | | | |
| 20 | | | | | |
| 21 | | | | | |
| 22 | | | | | |
| 23 | | | | | |
| 24 | | | | | |
| 25 | | | | | |
| 26 | | | | | |
| 27 | | | | | |
| 28 | | | | | |
| 29 | | | | | |
| 30 | | | | | |
| Individual Training Records were updated on : _____ | | | | | |
| _____ | | | | | |
| _____ | | | | | |

Training Officer
Group VT Center, Ambuja Cement Limited

| Ambuja Cements Limited Unit Bhatapara | | Programme Attendance | | Group VT Center | |
|----------------------------------------------------|----------------------|----------------------|------------|------------------|-----------|
| Programme Detail | | Basic & Refresher | | Date: 10/10/2020 | |
| Title: Quarry Safety & Working Near Water | | Batch No # | | Venue: | |
| Duration | | | | | |
| Faculty: | | | | | |
| # | Name | Designation | Empl. Code | Department | Signature |
| 01 | Lakhan Lal Verma | operator | 2215 | Mines | |
| 02 | Hemant Sahu | operator | 2207 | Mines | |
| 03 | Tari Ram Sahu | -11- | 741 | -11- | |
| 04 | Ram Pyare Verma | -11- | 7765 | -11- | |
| 05 | Om Prakash Choudhary | -11- | 3913 | -11- | |
| 06 | Snital Sahu | -11- | | -11- | |
| 07 | NARAD Sahu | -11- | 5939 | -11- | |
| 08 | Sheetal Sahu | operator | | Mines | |
| 09 | | | | | |
| 10 | | | | | |
| 11 | | | | | |
| 12 | | | | | |
| 13 | | | | | |
| 14 | | | | | |
| 15 | | | | | |
| 16 | | | | | |
| 17 | | | | | |
| 18 | | | | | |
| 19 | | | | | |
| 20 | | | | | |
| 21 | | | | | |
| 22 | | | | | |
| 23 | | | | | |
| 24 | | | | | |
| 25 | | | | | |
| 26 | | | | | |
| 27 | | | | | |
| 28 | | | | | |
| 29 | | | | | |
| 30 | | | | | |
| Individual Training Records were updated on: _____ | | | | | |
| _____ | | | | | |
| _____ | | | | | |


 Training Officer
 Group VT Center, Ambuja Cement Limited

Annexure- XIV

Central Chronicle Raipur
dated 18.06.07

Page- 6

Notice

Ambuja Cements Limited hereby informed all that they have been accorded Environment Clearance from the Ministry of their Project. Expansion of Rawan Lime Stone Mine and copy of clearance letter are available with the Chhattisgarh Environment Control Board/ Committee and may also be seen on the web site of Ministry of Environment and Forests at <http://envfor.nic.in>

back. daugi and Singh

क्रमांक/ नगर अभियंता, पंजीकृत लिफाफे उपरो कार्यालयी

हरि भूमि रायपुर, दिनांक 18.06.2007

Page- 6

59797

सूचना

अम्बुजा सीमेंट्स लिमिटेड, एतद द्वारा सभी को सूचित करता है कि उनके परियोजना (खान खदान विस्तार) हेतु मंत्रालय से पर्यावरण क्लीयरेंस मिल गया है, जिसकी कापी छत्तीसगढ़ पर्यावरण नियंत्रण मण्डल/कमेटी के पास उपलब्ध है, जिसे पर्यावरण एवं वन मंत्रालय के वेब साइट [http:// envfor .nic.in](http://envfor.nic.in) पर भी देखा जा सकता है।

छात्रावास-गर्ल्स होस्टल न्यू शांतिनगर

Submission of Half Yearly EC Compliance Report with Environmental Monitoring Report for the period Oct 2020 to March 2021

1 message

Environment Bhatapara <environment.bhatapara-ind@ambujacement.com>

Mon, May 31, 2021 at 8:26 PM

To: iro.raipur-mefcc@gov.in, CPCB RD Bhopal <cpcb.bhopal@gmail.com>, Head Office CECB <hocecb@gmail.com>, Regional Officer <rocecbraipur2014@gmail.com>, ecompliance-cg@gov.in

Dear Sir/Madam,

Please find the enclosed here with the six monthly Environment Clearance Compliance Report of stipulated conditions along with Monthly Environmental Monitoring Report (Oct 20 to Sep 2021) for Rawan Limestone Mine. Same copy has been uploaded on the company MOEFCC website. This is for your kind information and record.

Thanks & Regards

ANUBABU.B,
Environment Dept.,
Ambuja Cement Ltd (Bhatapara Unit),
Rawan Village, Baloda Bazar Dist.,
Chhattisgarh-493331,
Mobile: +91-8982073523 & +91-7000182227.
Office: 8982073666

 **ACL-BYT-ENV-2021-22-86.pdf**
17301K