

Ambuja Cement

25th September, 2019

Environmental Engineer
Punjab Pollution Control Board
Plot No. - 55 , Phase - II SAS Nagar
Mohali (Punjab)

-145

Subject: Environmental Statement Report for the year 2018-2019

Dear Sir,

Please find enclosed herewith the Environment Statement Report for the period of April, 2018 to March, 2019 for our Cement Grinding Unit (3.4 MTPA) with Captive Power Plant (30 MW), as per the requirement under section 14 of Environment (Protection) Rules, 1986 amended till date.

Hope you will find the same in order.

Thanking You.

Yours Faithfully,

For Ambuja Cements Ltd.


Rajiv Jain
Sr. Vice President

Encl: As above

Cc: **Director**
Ministry of Environment Forest & Climate Change
Northern Regional Office, Bays No 24-25 Sector 31-A
Dakshin Marg, Chandigarh - 160030

- 146

AMBUJA CEMENTS LIMITED

(Unit Ropar)

Village Daburji, P.O. Lodhimajra, Distt. Ropar - 140 113 (Punjab) Phone : 01881 - 274287 Fax : 276034

Website : www.ambujacement.com

(Regd. Off. : P. O. Ambuja Nagar, Taluka - Kodinar, Distt. Gir Somnath, Gujarat - 362 715)

CIN: L28010GJ000001

Environmental Statement Report for the Financial Year ending on 31st March, 2019

PART - A

- i) Name & address of the : Ambuja Cements Ltd. (Unit – Ropar)
Owner/occupier of the : Sh. Rajiv Jain
Industry, operation : Near - GGSSTP
or process. : Vill. - Daburji, P.O. - Lodhi Majra
Ropar – 140113 (Punjab)
- ii) Date of the last Environmental : 25th September, 2019
Statement report submitted.

PART – B

Water and Raw Material Consumption

(I) Water consumption, M³/day

i) Process (Cement Grinding)

Cement Plant Cooling : 22.98 m³/day

ii) Captive Power Plant (30 MW)

Power Generation (106018725kwh)

Condenser Cooling Water Consumption : 658 m³/day

Captive Power Plant (30 MW)

Power Generation Boiler Water Consumption : 32.64 m³/day

iii) Domestic :

(ACL Colony, Horticulture, Security Barracks and Supply to village Daburji)
: 333 m³/day

Name of the Product	Water consumption per unit of products	
	During the Previous financial year	During the current financial year
	1	2

CEMENT GRINDING

No water is consumed in the process as ACL Ropar is a grinding unit based on dry process. However the water is used for the plant machinery cooling purpose only and consumption per Ton of Cement is:

		3.92 Lt. /Ton	3.21 Lt. /Ton
POWER 30 MW	i) DM Water	0.12 Lt. /KWHr.	0.11 Lt. /KWHr.
	ii) Cooling Water	2.14 Lt./KWHr.	2.25 Lt./KWHr.

II)

Raw Material Consumption

Name of raw Material	Name of Products	Consumption of raw material per unit of output	
		During the Previous Financial year	During the current financial year

Cement Grinding Section (3.4 MTPA):

1)	Fly Ash	0.26	0.26
2)	Clinker	0.67	0.67
3)	Gypsum	0.07	0.07

Captive Power Plant (30 MW):

1)	Rice Husk	0.27 Kg /KWHr	0.09 Kg/KWHr
2)	Coal	0.43 Kg /KWHr	0.57 Kg/KWHr
3)	Biomass	0.28 Kg /KWHr	0.41 Kg/KWHr*

Remark:

The list of chemicals consumed is attached as per **Annexure 1**.

PART – C
POLLUTION GENERATED

(Parameters as specified in the consent issued)

Pollutants		Quantity of Pollution Generated	
<hr/>			
A) Air (Particulate Matter):			
(In terms of Dust loading to atmosphere from the Stacks)			
Pollution Load (Ton/Annum)			
Stack Attached to		Previous Year	Current Year
CM-1 (Bag Filter)	-	1.39	1.21
CM-2(Bag Filter)	-	1.84	1.82
CM-3(Bag Filter)	-	1.53	1.62
CM-4(Bag Filter)	-	1.81	1.78
O.Sepa-1	-	1.39	1.16
O.Sepa-2	-	1.77	1.82
O.Sepa-3	-	1.59	1.62
Packer -1	-	1.20	1.26
Packer -2	-	-	1.28
Packer-3	-	1.25	1.15
Packer-4	-	0.89	1.20
Boiler-1(ESP)	-	1.23	1.87
Boiler-2(ESP)	-	1.32	2.05
Boiler-3 (ESP)	-	0.00	0.00*
<hr/>			
Total	-	19.37	21.02

Kindly refer **Annexure- 2**.

- * Boiler No 3 is not in operation last two year.

B) Water:

1) Sewage Treatment Plant :

We are utilizing 100% STP treated water by using this as cooling tower make up of our Captive Power Plant, in coal dust suppression system. Hence, there is no pollution load of Sewage treatment plant. The STP Sludge after dry in two settling pond being used in our Ambuja Cement Foundation organic farm house as a organic manure. The test report of raw sewage and treated water quality is enclosed as per **Annexure - 3**

2) Effluent Treatment Plant :

Our ETP is zero liquid discharge plant. We using are using 100 % ETP treated water in condenser cooling. RO Reject water of ETP being treated through Force Circulation steam evaporator and ultimate reject of evaporator in the form of Slurry goes to sundry in ETP Solar Pond and thereafter ETP sludge ready for dispose. Hence, there is no pollution load of Effluent treatment plant. Final ETP Hazardous waste ETP Sludge under category 35.3 and 35.2 Water treatment plant Resin under category 35.2 ,15.1 Asbestos and Under Category 33.1 waste oil /Paint /Chemical drum container sent to Punjab Pollution Control Approved TSDF Site Nimbua Tehsil Dera Bassi Punjab. The test report of combined effluent of ETP and treated water quality is enclosed as per **Annexure – 4**

(i) SPM CONCENTRATION ($\mu\text{g}/\text{m}^3$) IN AMBIENT AIR.

Monitoring stations	Distance & direction From the Plant	Annual avg. of RSPM ($\mu\text{g}/\text{m}^3$)	Annual avg. of SPM ($\mu\text{g}/\text{m}^3$)
1. Gunny Bag Go down	0.40 Kms. SSE	38.15	81.46
2. ACL Colony	0.60 Kms. WNW	38.32	79.53
3. Clinker Truck Yard	0.20 Kms. SW	38.27	81.24
4. Bio Mass Storage Yard	0.65 Kms. WS	37.46	77.85
5. ACL Labour Colony	0.70 Kms. WN	36.22	76.24
6. Village Rattanpura	0.40 Kms. ESE	37.11	80.00

For Details Refer **Annexure – 5**

PART – D HAZARDOUS WASTES

As specified under Hazardous and other Wastes (Management & Transboundary Movement) Rules, 2016

Hazardous Wastes	Total Quantity (Kg)	
	During the Previous Financial year	During the current Financial year
(a) From Process		
Used Oil	3780 Kg	5250 Kg .
Used Grease	7410 Kg	8690 Kg
b) Hazardous waste disposed off to Authorised Recyclers:	(M/s Aggarwal Manuf. Co.)	
Used Oil	5460 Kg.	5460 Kg.
Used Grease	7220 Kg	7140 Kg
c) Balance stock as on 31.03.2019:		
Used Oil	630 Kg.	420 Kg
Used Grease	1710 Kg	3260 Kg
d) Hazardous waste disposed off to Approved TSDFs Site Nimbua under category 35.2 :		
Waste Resin	Opening Stock	Received Sent Balance Stock as on 31.03.2019
	0.830 Mt	0.00 0.00 0.830 Mt
e) Hazardous waste to Approved TSDFs Site Nimbua under category 15.1		
Waste Asbestos	Opening Stock	Received Sent Balance Stock as on 31.03.2019
	15.0 Mt.	8.50 12.13 11.37 Mt
f) Hazardous waste to Approved TSDFs Site Nimbua under category 33.1 Waste Empty Oil Barrel / Chemical / Paint Containers		
	Opening Stock	Received Sent Balance Stock as on 31.03.2019
	0.369 Mt.	0.336 Mt 0.144 Mt 0.561 Mt
(b) From Pollution Control Facilities		
	2017-2018	2018-2019
1. ETP sludge Generation		
ETP Sludge under Category 35.3	34180 Kg	35866 Kg
2. ETP sludge sent for Disposal to TSDF Nimbua		
ETP Sludge	30980 Kg	9280 Kg
3. Balance stock as on 31.03.2019:		
ETP Sludge	12642 Kg	39228 Kg.

No hazardous waste is generated from Air Pollution control facilities; however the solid waste i.e. Particulate matter generated from the process is automatically recycled in the process through the APCEs.

E – Waste

Year	Opening Stock (Kg)	Generated (Kg)	Sale (Kg)	Stock (Kg)
April 2018 -March 2019	570.00	250.0	820.0	Nil

Bio Medical Waste

Year	Blue Bag (Kg)	Yellow Bag (Kg)	Yellow Bag (Discarded Medicine) (Kg)	White Translucent (Kg)	Red Bag (Kg)
April 2018 -March 2019	3.27	13.97	5.40	Nil	7.69

The above Bio Medical waste has been sent to Punjab pollution control board approved Vendor M/s Rainbow Environments Mohali Punjab. The report of Bio Medical Waste Disposed is attached as per **Annexure 6**.

Battery Return

1 April 2018 – 30 September 2018 - Nil
1 October 2018 – 31 March 2019 - 0.680 MT

We have sent the battery under category 9.1 to Haryana State pollution control Board approved recycler M/s D.R. Industries Tehsil Bhadarpur Jazzar Haryana

PART – E

SOLID WASTES

Total Quantity		
	During the Previous Financial year	During the current Financial year
a) From Pollution Control Facilities i.e. ESPs and BF's:		
All ESPs, O' Sepas, & all Packers	752766.83 MT	795839.7 MT
b) Quantity recycled or reutilized	752766.83 MT	795839.7 MT

All the solid waste i.e. Particulate matter generated from the process is 100% automatically recycled in the process through the APCEs.

PART – F

Please specify the characteristics in terms of concentration and quantum of hazardous as well as solid wastes and indicate disposal practice adopted for both these category of wastes.

1) Hazardous Waste	
Used Oil	420 Kg.
Used Grease	3260 Kg
ETP Sludge	39228 Kg
Waste Resin	830 Kg
Waste Asbestos	11370 Kg
Empty Oil Barrel / Chemical / Paint Container	561 Kg

Disposal: The hazardous waste i.e. Used Oil, Grease and ETP Sludge generated from the process is stored in the Authorized Hazardous waste storage shed, permission for which has already been taken from PPCB. Used oil & Grease is sold to the authorised recyclers/vendors by CPCB, PPCB and ETP sludge has been sent to landfill site at Nimbua as per the provisions mentioned in Hazardous Waste (Management, Handling & Transboundary Movement) Rules.

2) Solid Waste

Around 29077.23 Ton Fly ash has been generated from the Power Plant which is 100% utilized in the cement manufacturing. However the solid waste (i.e. Particulate Matter) generated from the cement grinding as well as CPP is automatically recycled in the process by the various APCEs installed which in turn enhance the product economy.

PART – G

Impact of the Pollution Control Measures on conservation of natural resources and consequently on the cost of production

1. Around 6,88,615 Ton Fly ash has been consumed for the period from April, 2018 to March, 2019 for Cement production . Since the inception of plant, ACL has consumed more than 139.34 Lac Tons of fly ash. In case, this quantity of fly ash had not been consumed by ACL and had been pumped by thermal power plant into dykes, it would have required additional more than 240 approximate acres of land for its disposal making it unfertile and useless. Also the same is highly polluting in nature and becomes easily air borne leading to air pollution in the vicinity areas.
2. Greenbelt plays an important role in the control of air pollution, noise pollution and also gives and aesthetic look to the site. This year we have planted various species to strengthen the green belt till March 2019 end and further we have planned more than 1500 species to sustain beyond 33 % green belt by rainy season end .Selected species of plants have been planted in and around the premises to control the fugitive dust.
3. Latest technology APCEs like pulse jet bag filters have been installed in the process to capture the dust covering all the point source of emission and material transfer points. There are four bag filters attached to the Cement mills and three ESP attached to Boilers to capture the particulate matter. Also 74 Bag Filters installed in the process at various material transfer points to capture the Particulate Matter having efficiency more than 99%.The material captured by the APCEs is automatically recycled in process, which in turn enhances the process economy.
4. Data of ambient air quality and seven process critical stacks data are transmitted to CPCB/SPCB Server.
5. Noise level in day and night time with in prescribed limit. The detail report of year is attached as per **Annexure 7**. Also we are further in process to develop the green belt so that existing level may further be reduced.
6. Procurement of Biomass from local farmers has been started through formed Roop Nagar producers Co. Ltd. The same is giving employment to local villagers.

PART – H

Additional Investment proposal for Environmental Protection including abatement of pollution.

EXPENDITURE PROPOSED

- 1) Approx Rs 35.00 Lakhs has been budgeted for maintenance of captive power plant ESPs and bag filters of cement plant.
- 2) Approx Rs 1.54 Crore has been proposed budget for 2019-2020 by Ambuja Cement Foundation for well fare Activities, villager's community development & other activities. The details of expenditure 2018 – 2019 and proposed budget 2019-2020 are enclosed as **Annexure- 8 & 9**.
- 3) For improvement of cement loading area venting system costing 95.0 lakh Approx Capex has been proposed .

- 4) Proposed Cost for Operation & Maintenance of Sweeping Machines - 2000000
- 5) More than 4000 tree plantation has been planned in the plant and colony area for the year 2018 Costing More than Rs 10 Lakh.

Any other particulars in respect of Environment Protection and abatement of Pollution.

- 1) We are using sewerage treated water as cooling tower make up water in our CPP & Coal yard dust suppression system to reduce the fresh raw water consumption. This will ultimately lead to the conservation of Natural resources.
- 2) Monthly housekeeping round is undertaken by the senior management to ensure proper housekeeping inside the plant. The house keeping being routed through planned inspection at site by zone owners.
- 3) Our Preventive Maintenance cell is dedicated for maintenance of all pollution control equipments. Heir prime focus is to improve the health of machinery and equipments.
- 4) World Environment day was celebrated at ACL, Ropar on 5th June, 2019 with full zeal and enthusiasm. All the employees & their families attended the function. A note on the same is attached as **Annexure – 10**

Expenses incurred under the various environmental protection head like Operation and maintenance of Sewage Treatment plant, Effluent Treatment plant, environmental monitoring etc. are listed below:

Captive Power Plant & Cement Plant

Operation & Maintenance Cost in Rs (Approx):

1. Power Cost ETP Cost (Annexure 11)	-	462378
2. Power Cost STP Cost (Annexure 12)	-	591261
3. Power Cost of CPP ESP (Annexure 13)	-	1022164
4 Community Development (ACF) expenditure (April 2018 – March 2019)	-	16123295
5 Operation & Maintenance Cost of ETP	-	3130650
6 Operation & Maintenance Cost of Bag Filter (CPP)	-	513130
7 Maintenance Cost of Cement Plant Bag Filter	-	1500000
8 Operation & Maintenance Cost of ESP(CPP)	-	1801598.00
9 Environmental expenditure including Horticulture development	-	4764166
10 Operation & Maintenance cost for Sweeping Machines	-	6500000
11 Diesel Consumption in Tennant Road Sweeping machines(27146 Liter) - and operation cost incurred	-	1601614 .00
12 Cost incurred for Calibration & AMC of Environmental Equipments	-	1800000
13 Cost incurred for Fly Ash Dryer Environmental Equipments	-	5000000

OTHER ACHIEVEMENTS

1. Certified for Recertification Audit for the Integrated Management Systems (IMS) which includes Environment Management Systems (ISO: 14001-2015), Quality Management Systems (ISO: 9001-2008) and Occupational Health and Safety Management Systems (OHSAS: 18001-2007) is being scheduled in October 2019 by DNV.
2. Generated green power approximate **44310758** kwh has been generated around 40.48 % of total power generation for our own utility in cement plant by using agricultural waste bio mass Carbon neutral fuels.
3. Green belt is further strengthen by planting around 1250 tree in this year for completion of 33 % green belt area the same will be completed before end of rainy season.
4. One Roof Top rain water recharge bore well installed at project site .
5. We have Constructed three check dam within the project area of 10 Km from Ropar plant in Munguwal & Chakarma Village for improving water level in the said locations and same will benefit to the local villages and improve the water level of surroundings .The said activity being done with cooperation of local district administration and our CSR Wing Ambuja Cement Foundation.
6. Our CSR initiative & action as mentioned in the Ambuja Cements Ltd Ropar Sustainability Report 2018 highlights as per **Annexure 14**.
7. We have installed 408 LED Lights in the plant in till June 2019.
8. Kitchen waste is being treated through Organic waste Converter plant being converted into manure for further usages in Horticulture purpose.
9. Fly ash Dryer of capacity 1000 Mt/day has been installed for utilization of Fly Ash lying in open dykes. This action will further evacuate the land occupied by fly ash lying in open dykes and will reduce fugitive emissions and convert the land for future agriculture purpose.

AMBUJA CEMENTS LTD UNIT ROPAR

ETP Monthly Chemical Consumption Report April 2018 to March 2019

Chemical Name	Apr-18	May-18	Jun-18	Jul-18	Aug-18	Sep-18	Oct-18	Nov-18	Dec-18	Jan-19	Feb-19	Mar-19	Total Consumption
Dolomite (Kg.)	50.00	70	60	50	50	50	50.00	50	50	50	55	50	635.00
Hydrochloric Acid (Ton.)	0.44	0.44	0.44	0.44	0.44	0.44	0.44	0.44	0.44	0.44	0.44	0.44	5.28
Ferric Chloride (kg.)	42	21	21	14	21	14	14	21	21	14	21	21	245.00
Indion-8211,RO Antiscalant (kg.)	10.00	10	10	10	25.8	15	15	15.00	25	15	15	15	180.80
Indfloc-442 (Polelectrolyte) - Kg.	6.5	2	2	2.2	2	1.03	0.8	1.6	1.6	0.8	0.70	1.60	22.83
Hydrated Lime (Ton)	0.96	0.84	0.72	0.76	1	0.88	0.64	0.6	0.92	0.84	0.68	0.68	9.22
Sodium Hypochlorite (L)	265.00	200	145	190	120	150	125.00	140	160.00	150	60	115	1820.00
Dechloronation-7408 (SMBS) -Kg.	22.4	11.2	11.2	11.2	28.4	44.00	45.00	11.2	25.2	31.20	11.4	11.2	263.60
Soda Ash (Kg)	200	100	200	50	50	200	200	600	200	150	200	200	2350.00

AMBUJA CEMENTS LTD UNIT ROPAR

DUST RECYCLED BY THE VARIOUS APCEs FOR THE YEAR APRIL 2018 - MARCH 2019

Sr. No.	APCE	Vol. Hand. Capacity (m ³ /Hr.)	Running Hours of APCEs	Inlet Dust Loading (mg/m ³) (D/M)	Average Dust Emission (mg/m ³)	Recycled (Ton/Annum)	Efficiency of APCEs	Dust Load per Annum
1	CM Mill BF 1	36000	4833.40	334600	0.25	58221.16	100.00	1.21
2	CM Mill BF 2	36000	7272.15	334600	0.25	87597.34	100.00	1.82
3	CM Mill BF 3	36000	6471.25	334600	0.25	77950.03	100.00	1.62
4	CM-4	65000	7399.55	700000	0.24	336679.41	100.00	1.78
5	O'SEPA-1	48000	4833.40	100000	0.24	23200.26	100.00	1.16
6	O'SEPA-2	48000	7272.15	100000	0.25	34906.23	100.00	1.82
7	O'SEPA-3	48000	6471.25	100000	0.25	31061.92	100.00	1.62
8	Packer-1	48000	5256.85	100000	0.24	25232.82	100.00	1.26
9	Packer-2	48000	5132.56	100000	0.25	24636.23	100.00	1.28
10	Packer-3	26000	4615.20	100000	0.25	11999.49	100.00	1.15
11	Packer-4(1)	20000	4988.85	100000	0.24	9977.68	100.00	1.20
12	Packer-4(2)	20000	4988.85	100000	0.24	9977.68	100.00	1.20
							731440.3	
13	Boiler - 1	75600	6433.00	62000	0.29	30152.62	100.00	1.87
14	Boiler - 2	75600	7306.50	62000	0.28	34246.87	100.00	2.05
15	Boiler-3(1)	144396	0.00	66000	0	0.00	100.00	
16	Boiler-3(2)	144396	0.00	66000	0	0.00	100.00	
							64399.49	21.02
Total							795839.7	

Prepared By :

SEWAGE TREATMENT PLANT MONITORING REPORT FROM (April 18 - MARCH 19)

DATE	RAW PARAMETERS				TREATED PARAMETERS			AEREATION TANK	
	pH	B.O.D (mg/l)	C.O.D (mg/l)	SS (mg/l)	pH	B.O.D (mg/l)	C.O.D (mg/l)	SS (mg/l)	MLSS (mg/l)
02.04.2018	7.14	225.00	265.00	244.00	7.48	18.00	65.00	72.00	2831.00
03.04.2018	7.35	200.00	245.00	226.00	7.35	20.00	50.00	64.00	2861.00
10.04.2018	7.12	215.00	260.00	217.00	7.37	18.00	55.00	72.00	2885.00
11.04.2018	7.41	205.00	245.00	241.00	7.38	20.00	60.00	69.00	2609.00
19.04.2018	6.85	225.00	280.00	241.00	7.41	14.00	55.00	64.00	2683.00
20.04.2018	7.02	230.00	295.00	211.00	4.47	20.00	57.00	61.00	2577.00
25.04.2018	6.82	200.00	270.00	262.00	7.38	20.00	45.00	71.00	2710.00
26.04.2018	7.65	210.00	235.00	197.00	7.36	22.00	55.00	66.00	2521.00
04.05.2018	7.19	240.00	270.00	209.00	7.41	18.00	68.00	67.00	2517.00
05.05.2018	7.08	235.00	265.00	221.00	7.52	22.00	77.00	61.00	2513.00
09.05.2018	7.21	225.00	275.00	247.00	7.43	18.00	66.00	68.00	2501.00
10.05.2018	7.00	215.00	270.00	254.00	7.42	14.00	73.00	71.00	2591.00
15.05.2018	7.61	230.00	265.00	261.00	7.43	17.00	66.00	59.00	2611.00
16.05.2018	7.47	200.00	240.00	231.00	7.40	15.00	64.00	73.00	2510.00
30.05.2018	7.16	210.00	260.00	245.00	7.48	18.00	68.00	61.00	2536.00
01.06.2018	7.59	220.00	270.00	185.00	7.58	14.00	65.00	57.00	2499.00
07.06.2018	7.16	240.00	285.00	214.00	7.43	22.00	60.00	61.00	2555.00
08.06.2018	6.85	205.00	250.00	216.00	7.47	16.00	75.00	63.00	2570.00
12.06.2018	7.32	225.00	265.00	186.00	7.40	20.00	60.00	67.00	2551.00
13.06.2018	7.13	210.00	250.00	221.00	7.51	14.00	65.00	61.00	2401.00
22.06.2018	7.62	215.00	265.00	218.00	7.48	17.00	50.00	59.00	2575.00
23.06.2018	7.19	200.00	250.00	201.00	7.57	18.00	65.00	64.00	2548.00
28.08.2018	7.32	235.00	270.00	211.00	7.40	20.00	60.00	68.00	2501.00
29.06.2018	7.62	210.00	240.00	221.00	7.49	18.00	55.00	64.00	2095.00
05.07.2018	7.81	240.00	285.00	213.00	7.48	20.00	55.00	61.00	2213.00
06.07.2018	7.15	195.00	260.00	204.00	7.52	14.00	60.00	71.00	2154.00
13.07.2018	7.37	240.00	250.00	189.00	7.43	16.00	65.00	66.00	2110.00
14.07.2018	7.46	235.00	260.00	184.00	7.47	22.00	55.00	67.00	2107.00
17.07.2018	7.21	240.00	255.00	192.00	7.40	16.00	50.00	61.00	2217.00
18.07.2018	7.34	245.00	290.00	204.00	7.51	20.00	60.00	71.00	2327.00
26.07.2018	6.99	240.00	285.00	214.00	7.48	18.00	45.00	74.00	2474.00
27.07.2018	7.56	220.00	260.00	229.00	7.57	20.00	48.00	64.00	2419.00
03.08.2018	7.18	235.00	270.00	183.00	7.40	18.00	55.00	61.00	2511.00
04.08.2018	7.64	185.00	240.00	154.00	7.49	14.00	50.00	71.00	2401.00
08.08.2018	7.29	205.00	245.00	198.00	7.61	18.00	75.00	66.00	2504.00
09.08.2018	7.38	215.00	255.00	216.00	7.68	14.00	45.00	67.00	2381.00
16.08.2018	6.94	245.00	295.00	219.00	7.73	20.00	60.00	61.00	2548.00
17.08.2018	7.06	225.00	260.00	213.00	7.40	16.00	72.00	68.00	2501.00
24.08.2018	7.30	215.00	240.00	222.00	7.48	18.00	69.00	59.00	2410.00
25.08.2018	7.54	210.00	270.00	217.00	7.51	15.00	50.00	73.00	2806.00
30.08.2018	7.73	210.00	250.00	219.00	7.46	16.00	65.00	61.00	2831.00
31.08.2018	7.28	220.00	270.00	216.00	7.31	22.00	50.00	65.00	2861.00
06.09.2018	7.04	250.00	295.00	216.00	7.34	16.00	55.00	82.00	2885.00
07.09.2018	7.61	240.00	260.00	221.00	7.32	20.00	55.00	75.00	2609.00
10.09.2018	7.92	255.00	290.00	218.00	7.57	18.00	65.00	90.00	2683.00
11.09.2018	7.43	210.00	245.00	162.00	7.61	20.00	55.00	86.00	2577.00
20.09.2018	7.28	225.00	285.00	162.00	7.73	18.00	50.00	68.00	2432.00
21.09.2018	7.14	235.00	260.00	187.00	7.52	20.00	65.00	76.00	2507.00
26.09.2018	7.39	215.00	275.00	230.00	7.64	18.00	71.00	79.00	2539.00
27.09.2018	7.68	230.00	250.00	215.00	7.41	18.00	50.00	57.00	2517.00
03.10.2018	7.64	240.00	245.00	194.00	4.47	20.00	65.00	71.00	2615.00
04.10.2018	7.60	225.00	240.00	203.00	7.38	14.00	50.00	73.00	2824.00
11.10.2018	7.67	235.00	235.00	206.00	7.36	20.00	55.00	59.00	2785.00
2.10.2018	7.58	220.00	255.00	213.00	7.41	18.00	55.00	69.00	2683.00

16.10.2018	7.60	210.00	260.00	241.00	7.52	22.00	65.00	73.00	2616.00
17.10.2018	7.58	210.00	265.00	226.00	7.43	16.00	45.00	70.00	2145.00
25.10.2018	7.61	225.00	250.00	241.00	7.42	20.00	65.00	73.00	2261.00
26.10.2018	7.57	200.00	240.00	191.00	7.43	20.00	65.00	71.00	2110.00
29.10.2018	7.57	215.00	245.00	201.00	7.40	22.00	55.00	72.00	2095.00
30.10.2018	7.71	225.00	255.00	217.00	7.48	18.00	50.00	67.00	2213.00
01.11.2018	7.47	240.00	265.00	196.00	7.58	22.00	65.00	73.00	2154.00
02.11.2018	7.55	220.00	250.00	198.00	7.43	18.00	60.00	61.00	2110.00
08.11.2018	7.59	240.00	240.00	198.00	7.47	20.00	65.00	59.00	2107.00
09.11.2018	7.25	235.00	240.00	227.00	7.40	22.00	55.00	61.00	2217.00
13.11.2018	7.52	230.00	250.00	216.00	7.51	20.00	45.00	71.00	2327.00
14.11.2018	7.41	230.00	270.00	256.00	7.48	20.00	40.00	68.00	2474.00
18.11.2018	7.64	240.00	235.00	234.00	7.57	18.00	55.00	67.00	2419.00
19.11.2018	7.56	255.00	230.00	211.00	7.40	20.00	60.00	61.00	2511.00
27.11.2018	7.60	250.00	245.00	191.00	7.49	18.00	65.00	71.00	2401.00
28.11.2018	7.60	240.00	225.00	244.00	7.61	20.00	45.00	59.00	2504.00
04.12.2018	7.59	245.00	255.00	226.00	7.68	14.00	40.00	73.00	2381.00
05.12.2018	7.50	240.00	250.00	217.00	7.73	16.00	55.00	61.00	2407.00
12.12.2018	7.46	220.00	255.00	241.00	7.40	22.00	55.00	57.00	2311.00
13.12.2018	7.51	235.00	250.00	241.00	7.48	16.00	60.00	61.00	3083.00
17.12.2018	7.58	185.00	270.00	211.00	7.51	20.00	38.00	63.00	3194.00
18.12.2018	7.50	205.00	245.00	260.00	7.46	18.00	50.00	67.00	2203.00
28.12.2018	7.61	215.00	250.00	197.00	7.31	20.00	60.00	61.00	3191.00
29.12.2018	7.53	245.00	240.00	209.00	7.49	18.00	56.00	59.00	3282.00
02.01.2019	7.63	225.00	250.00	185.00	7.58	14.00	65.00	57.00	3218.00
03.01.2019	7.45	215.00	230.00	214.00	7.60	20.00	60.00	59.00	3159.00
08.01.2019	7.45	210.00	240.00	216.00	7.58	16.00	75.00	55.00	3201.00
09.01.2019	7.55	210.00	255.00	186.00	7.58	18.00	60.00	77.00	2902.00
16.01.2019	7.51	220.00	260.00	221.00	7.61	18.00	65.00	68.00	2811.00
17.01.2019	7.48	250.00	250.00	218.00	7.51	16.00	50.00	59.00	2890.00
24.01.2019	7.56	240.00	260.00	222.00	7.65	16.00	65.00	70.00	2866.00
25.01.2019	7.35	255.00	250.00	217.00	7.76	18.00	60.00	73.00	2871.00
29.01.2019	7.37	210.00	255.00	219.00	7.70	22.00	55.00	66.00	2891.00
30.01.2019	7.38	225.00	280.00	216.00	7.46	20.00	55.00	64.00	2863.00
07.02.2019	7.41	235.00	260.00	216.00	7.51	18.00	36.00	68.00	2851.00
08.02.2019	4.47	215.00	270.00	221.00	7.38	22.00	32.00	64.00	2555.00
13.02.2019	7.38	205.00	270.00	201.00	7.65	18.00	38.00	61.00	2570.00
14.02.2019	7.36	225.00	270.00	211.00	7.41	20.00	40.00	71.00	2551.00
19.02.2019	7.41	220.00	265.00	221.00	7.74	22.00	36.00	66.00	2401.00
20.02.2019	7.52	250.00	250.00	213.00	7.31	20.00	45.00	67.00	2575.00
26.02.2019	7.43	160.00	250.00	204.00	7.56	18.00	40.00	61.00	2548.00
27.02.2019	7.42	180.00	270.00	189.00	7.60	22.00	48.00	68.00	2536.00
03.03.2019	7.43	220.00	225.00	184.00	7.79	20.00	55.00	59.00	2499.00
06.03.2019	7.40	230.00	255.00	192.00	7.43	24.00	55.00	72.00	2481.00
12.03.2019	7.40	200.00	245.00	204.00	7.58	20.00	45.00	64.00	2477.00
13.03.2019	7.37	210.00	270.00	214.00	7.50	18.00	60.00	72.00	2487.00
18.03.2019	7.37	240.00	265.00	229.00	7.61	20.00	60.00	69.00	2458.00
19.03.2019	7.29	235.00	260.00	183.00	7.43	21.00	65.00	70.00	2469.00
28.03.2019	7.37	225.00	260.00	154.00	7.68	18.00	55.00	73.00	2477.00
29.03.2019	7.35	215.00	240.00	198.00	7.37	16.00	50.00	64.00	2481.00
Average:	7.38	223	257.64	212.80	7.44	18.51	56.57	66.64	2557.56

AMBUJA CEMENTS LTD UNIT ROPAR

ETP Combined Effluent & Treated Water Quality Monitoring Report 2018 - 2019

Month	Combined Effluent Controlled Parameters				Treated water Parameters		
	pH	Total Dissolved Solid (TDS)	Total Hardness (PPM)	Chlorides(PPM)	pH	Total Dissolved Solid (TDS)	Total Hardness (ppm)
	6.5 - 8.5	5000 Max.	1700 Max.	1900 Max.			
Apr-18	7.36	1531	638	631	7.52	210	25
May-18	7.57	2168	695	756	7.22	289	34
Jun-18	7.42	1673	572	687	7.18	230	26
Jul-18	7.54	1300	442	427	7.29	249	24
Aug-18	7.54	1497	593	584	7.05	205	22
Sep-18	7.57	1299	506	471	7.11	212	18
Oct-18	7.44	1532	605	619	7.44	270	25
Nov-18	7.50	1732	710	625	7.65	278	35
Dec-18	7.71	1763	754	685	7.16	219	20
Jan-19	7.61	1386	552	480	7.81	230	25
Feb-19	7.59	1301	497	444	7.36	243	45
Mar-19	7.71	1144	523	458	7.88	235	19
Average	7.55	1527	591	572.25	7.39	198	18

Prepared By :



AMBUJA CEMENTS LTD UNIT ROPAR

Annexure 5

Ambient Air Quality Monitoring data of Year 2018 -2019 of Designated Station (Monthly Average)

Month	Village Ratanpura		Gunny Bag Gowdown		ACL Colony		Clinker Truck Yard		Bio Mass Storage Yard		Acl Labour Colony	
	PM 2.5 μ gm/m3*	PM 10 μ gm/m3*	PM 2.5 μ gm/m3*	PM 10 μ gm/m3*	PM 2.5 μ gm/m3*	PM 10 μ gm/m3*	PM 2.5 μ gm/m3*	PM 10 μ gm/m3*	PM 2.5 μ gm/m3*	PM 10 μ gm/m3*	PM 2.5 μ gm/m3*	PM 10 μ gm/m3*
Apr-18	38.67	79.58	40.35	81.49	37.54	75.61	34.48	69.75	41.35	80.44	39.71	76.42
May-18	39.00	76.61	40.75	78.19	38.12	79.87	36.81	75.56	40.34	81.72	37.23	79.56
Jun-18	35.39	78.56	38.51	85.45	41.34	82.13	39.57	78.67	42.61	83.42	40.79	74.60
Jul-18	38.59	81.09	35.55	76.29	40.31	79.46	36.75	77.51	39.17	81.08	41.79	83.42
Aug-18	34.53	72.43	37.65	81.15	32.63	68.71	38.42	79.52	35.48	74.39	38.56	81.01
Sep-18	37.48	83.36	32.24	78.27	39.31	81.09	34.56	87.12	31.79	76.38	34.52	79.91
Oct-18	34.73	79.58	38.41	85.08	35.68	84.25	41.24	86.34	38.71	83.67	35.62	81.36
Nov-18	38.39	86.97	32.53	83.45	37.66	76.58	34.47	81.54	40.38	85.36	38.51	79.50
Dec-18	41.59	89.46	37.53	81.64	43.31	85.59	38.48	87.38	36.57	78.64	32.74	74.04
Jan-19	34.89	78.57	40.65	83.78	42.49	87.54	39.60	81.75	35.58	72.68	31.45	68.63
Feb-19	32.98	72.57	41.54	80.43	34.91	75.39	40.65	85.23	34.95	74.45	32.07	70.82
Mar-19	39.04	81.19	42.12	82.27	36.58	78.16	44.24	84.47	32.61	61.94	31.70	65.64
Average	37.11	80.00	38.15	81.46	38.32	79.53	38.27	81.24	37.46	77.85	36.22	76.24

National Ambient Air Quality Standards

Particular	PM 2.5 μ gm/m3*	PM 10 μ gm/m3*
Daily Average	40	60
Annual Average	60	100

**Occupational Health Centre
Ambuja Cement Limited
Unit: Ropar (Punjab)**

Sr. No	Month	Biomedical waste generation & disposal category wise					
		Blue bag	Yellow bag	Yellow bags(Discarded medicines)	White translucent	Red bags	Total waste(All category)
1	April, 18	Nil	590gm	230gm	Nil	740gm	
2	May,18	Nil	990gm	Nil	Nil	500gm	
3	June,18	Nil	1240gm	690gm	Nil	590gm	
4	July,18	Nil	1760gm	3760gm	Nil	910gm	
5	August,18	Nil	1520gm	Nil	Nil	560gm	
6	September,18	Nil	1660gm	Nil	Nil	590gm	
7	October,18	Nil	1540gm	Nil	Nil	2030gm	
8	November,18	Nil	565gm	Nil	Nil	115gm	
9	December,18	Nil	1400gm	Nil	Nil	550gm	
10	January, 19	Nil	1186gm	325gm	Nil	490gm	
11	February,19	Nil	785gm	395gm	Nil	170m	
12	March,19	3265gm	735gm	Nil	Nil	440gm	
Total waste category wise April 18 to March, 19		3.265 kg	13.971 kg	5.400 kg	Nil	7.685 kg	30.321 kg

		AMBUJA CEMENT LIMITED UNIT ROPAR										F-E-060-06				
		NOISE MONITORING REPORT FROM 01/04/2018 TO 30/04/2018														
		READING TAKEN IN DAY TIME (5:00 AM TO 10:00 PM)										Day time limit =75dB(A)				
		<-----PLANT MACHINERY NOISE----->					<-----AMBIENT AIR NOISE----->									
DATE	FLYASH SYSTEM	C.H.II	C.M.G.BOX	C.M.AREA	C.H.I	TURB.BLD.	BOLLER AREA	MAIN GATE	E. GATE	G.BAG.G	R.H.STORAGE	COLONY M.GATE	COLONY E. GATE	CHILDREN PARK	COLONY W.SIDE	
	dB(A)	dB(A)	dB(A)	dB(A)	dB(A)	dB(A)	dB(A)	dB(A)	dB(A)	dB(A)	dB(A)	dB(A)	dB(A)	dB(A)	dB(A)	
04.04.2018	76.4	84.1	93.2	82.9	79.5	89.7	72.2	61.9	59.7	59.3	61.1	54.1	47.8	40.5	41.9	
12.04.2018	77.5	83.6	97.5	83.7	81.0	93.1	76.8	64.1	61.9	57.7	62.4	50.7	44.7	38.9	39.5	
17.04.2018	73.1	84.6	94.9	85.1	83.1	91.9	71.5	65.8	62.2	55.7	59.9	51.5	49.2	39.9	41.5	
27.04.2018	72.5	85.7	94.8	83.9	81.2	90.7	75.3	64.9	62.8	60.1	59.5	53.6	52.5	39.2	40.2	
Avg.	74.88	84.50	95.10	83.90	81.20	91.35	73.95	64.18	61.65	58.20	60.73	52.48	48.55	39.63	40.78	

READING TAKEN IN NIGHT TIME (10:00PM TO 06:00AM)															
PLANT MACHINERY NOISE					AMBIENT AIR NOISE										
DATE	FLYASH SYSTEM dB(A)	C.H.II dB(A)	C.M.G.BOX dB(A)	C.M.AREA dB(A)	C.H.I dB(A)	TURB.BLD. dB(A)	BOLLER AREA dB(A)	MAIN GATE dB(A)	E. GATE dB(A)	G.BAG.G dB(A)	R.H.STORAGE dB(A)	COLONY M.GATE dB(A)	COLONY E. GATE dB(A)	CHILDREN PARK dB(A)	COLONY W.SIDE dB(A)
04.04.2018	74.1	83.8	92.1	79.3	78.4	88.1	70.5	59.6	57.9	56.2	60.5	52.4	46.2	39.5	39.7
12.04.2018	76.2	82.5	95.9	80.5	79.1	91.0	73.1	62.7	58.3	55.9	61.8	49.3	43.9	37.1	38.1
17.04.2018	72.2	82.4	93.7	83.7	82.1	90.1	70.2	61.1	60.2	53.5	54.3	50.1	47.5	38.9	40.2
27.04.2018	71.9	83.7	94.3	83.5	79.3	90.7	74.5	62.6	61.5	59.7	57.6	52.5	50.9	38.1	39.5
Avg.	73.60	83.10	94.00	81.75	79.73	89.98	72.08	61.50	59.48	56.33	58.55	51.08	47.13	38.40	39.38

Remarks: Use Ear Muff in the area having noise level greater 75dB(A) & 70dB(A) during day time & night time respectively.

Prepared By 

AMBUJA CEMENT LIMITED UNIT ROPAR														F-E-060-06			
NOISE MONITORING REPORT FROM 01/05/2018 TO 31/05/2018																	
READING TAKEN IN DAY TIME (6:00 AM TO 10:00 PM)																	
←-----PLANT MACHINERY NOISE-----→						←-----AMBIENT AIR NOISE-----→										Day time limit =75dB(A)	
DATE	FLYASH SYSTEM dB(A)	C.H.II dB(A)	C.M.G.BOX dB(A)	C.M.AREA dB(A)	C.H.I dB(A)	TURB.BLD. dB(A)	BOLLER AREA dB(A)	MAIN GATE dB(A)	E. GATE dB(A)	G.BAG.G dB(A)	R.H.STORAGE dB(A)	COLONY M.GATE dB(A)	COLONY E. GATE dB(A)	CHILDREN PARK dB(A)	COLONY W.SIDE dB(A)		
02.05.2018	73.6	84.9	94.7	80.3	81.2	90.5	73.1	63.6	62.9	59.1	63.2	51.6	49.5	43.8	39.9		
10.05.2018	74.2	80.9	96.4	85.8	79.7	90.8	74.2	63.3	65.4	59.2	65.1	50.3	47.5	41.1	43.5		
16.05.2018	73.9	82.3	97.1	86.9	82.1	93.4	75.8	62.3	62.4	56.3	63.8	50.6	46.7	44.1	43.8		
25.05.2018	76.4	84.1	93.2	82.9	79.5	89.7	72.2	61.9	59.7	59.3	61.1	54.1	47.8	40.5	41.1		
30.05.2018	76.5	81.9	97.8	100.1	81	90.7	74.5	65.1	63.3	59.5	63.2	50.1	47.1	43.8	42.6		
Avg.	74.92	82.82	95.84	87.20	80.70	91.02	73.96	63.24	62.74	58.68	63.28	51.34	47.72	42.66	42.18		

READING TAKEN IN NIGHT TIME (10:00PM TO 06:00AM)															
PLANT MACHINERY NOISE					AMBIENT AIR NOISE										
DATE	FLYASH SYSTEM dB(A)	C.H.II dB(A)	C.M.G.BOX dB(A)	C.M.AREA dB(A)	C.H.I dB(A)	TURB.BLD. dB(A)	BOLLER AREA dB(A)	MAIN GATE dB(A)	E. GATE dB(A)	G.BAG.G dB(A)	R.H.STORAGE dB(A)	COLONY M.GATE dB(A)	COLONY E. GATE dB(A)	CHILDREN PARK dB(A)	COLONY W.SIDE dB(A)
02.05.2018	71.8	80.2	92.1	79.7	80.1	89.1	71.5	61.5	61.4	57.8	62.3	49.8	49.8	41.7	38.7
10.05.2018	72.2	79.2	95.8	82.9	78.1	88.7	71.5	62.1	63.4	58.5	64.1	48.3	45.7	40.1	41.2
16.05.2018	72.5	81.5	96.1	85.7	81.5	91.9	72.7	61.3	61.8	54.7	62.1	47.8	45.1	42.7	42.5
25.05.2018	74.1	83.8	92.1	79.3	78.4	88.1	70.5	59.6	57.9	56.2	60.5	52.4	46.2	39.5	39.7
30.05.2018	74.3	80.1	96.4	99.5	80.3	90.6	73.7	62.7	62.5	58.3	65.5	44.7	45.9	42.4	42.9
Avg.	72.98	80.96	94.50	85.42	79.68	89.68	71.98	61.44	61.40	57.10	62.90	48.60	46.54	41.28	41.00

Remarks: Use Ear Muff in the area having noise level greater 75dB(A) & 70dB(A) during day time & night time respectively.

Prepared By 

AMBUJA CEMENT LIMITED UNIT ROPAR														F-E-060-06			
NOISE MONITORING REPORT FROM 01/06/2018 TO 30/06/2018																	
READING TAKEN IN DAY TIME (6:00 AM TO 10:00 PM)																	
←-----PLANT MACHINERY NOISE-----→					←-----AMBIENT AIR NOISE-----→											Day time limit =75dB(A)	
DATE	FLYASH SYSTEM dB(A)	C.H.II dB(A)	C.M.G.BOX dB(A)	C.M.AREA dB(A)	C.H.I dB(A)	TURB.BLD. dB(A)	BOLLER AREA dB(A)	MAIN GATE dB(A)	E. GATE dB(A)	G.BAG.G dB(A)	R.H.STORAGE dB(A)	COLONY M.GATE dB(A)	COLONY E. GATE dB(A)	CHILDREN PARK dB(A)	COLONY W.SIDE dB(A)		
05.06.2018	75.1	80.5	96.1	82.5	81.9	90.8	70.9	63.2	62.9	55.7	60.3	52.6	52.1	44.1	44.7		
14.06.2018	73.9	81.2	94.5	79.2	82.2	94.2	72.1	64.5	61.6	60.1	63.1	55.9	51.4	43.2	41.9		
20.06.2018	72.8	82.5	92.7	83.1	80.4	93.6	71.9	62.5	61.8	56.4	60.1	51.9	48.5	42.1	41.6		

28.06.2018	74.5	84.1	94.4	80.7	78.5	91.3	73.5	61.8	64.5	59.5	63.6	53.4	51.2	40.9	38.8
Avg.	74.08	82.08	94.43	81.38	80.75	92.48	72.10	63.00	62.70	57.93	61.78	53.45	50.80	42.58	41.75

READING TAKEN IN NIGHT TIME (10:00PM TO 06:00AM)

Night time limit = 70dB(A)

PLANT MACHINERY NOISE						AMBIENT AIR NOISE									
DATE	FLYASH SYSTEM dB(A)	C.H.II dB(A)	C.M.G.BOX dB(A)	C.M.AREA dB(A)	C.H.I dB(A)	TURB.BLD. dB(A)	BOLLER AREA dB(A)	MAIN GATE dB(A)	E. GATE dB(A)	G.BAG.G dB(A)	R.H.STORAGE dB(A)	COLONY M.GATE dB(A)	COLONY E. GATE dB(A)	CHILDREN PARK dB(A)	COLONY W.SIDE dB(A)
05.06.2018	72.3	79.6	93.1	80.4	81.1	89.1	69.8	60.9	61.2	55.1	59.1	50.8	50.9	42.9	42.8
14.06.2018	70.9	80.1	93.4	78.2	81.2	92.3	71.5	62.4	59.9	59.4	60.2	52.3	51.1	42.1	40.9
20.06.2018	71.1	81.7	91.3	81.9	79.5	91.4	70.7	61.1	59.9	56.1	59.5	50.4	47.9	41.3	40.1
28.06.2018	73.6	83.3	93.7	79.5	77.9	90.5	72.6	60.4	62.5	58.7	62.9	51.9	50.6	40.1	37.9
Avg.	71.98	81.18	92.88	80.00	79.93	90.83	71.15	61.20	60.88	57.33	60.43	51.35	50.13	41.60	40.43

Remarks: Use Ear Muff in the area having noise level greater 75dB(A) & 70dB(A) during day time & night time respectively.

Prepared By

AMBUJA CEMENT LIMITED UNIT ROPAR NOISE MONITORING REPORT FROM 01/07/2018 TO 31/07/2018															
PLANT MACHINERY NOISE						AMBIENT AIR NOISE									
DATE	FLYASH SYSTEM dB(A)	C.H.II dB(A)	C.M.G.BOX dB(A)	C.M.AREA dB(A)	C.H.I dB(A)	TURB.BLD. dB(A)	BOLLER AREA dB(A)	MAIN GATE dB(A)	E. GATE dB(A)	G.BAG.G dB(A)	R.H.STORAGE dB(A)	COLONY M.GATE dB(A)	COLONY E. GATE dB(A)	CHILDREN PARK dB(A)	COLONY W.SIDE dB(A)
06.07.2018	73.9	79.9	92.5	80.6	81.6	89.1	73.9	65.5	64.2	59.1	60.5	51.2	49.8	45.5	41.3
11.07.2018	75.4	80.2	94.6	81.3	84.7	91.9	75.9	63.4	63.3	61.6	58.1	51.4	48.3	44.7	40.5
17.07.2018	71.2	81.4	95.8	82.9	80.4	91.7	73.1	61.1	60.5	58.5	65.4	49.7	48.9	42.1	40.2
26.07.2018	72.8	81.9	96.5	80.9	78.5	94.9	72.9	62.5	62.2	59.1	60.6	54.9	50.4	41.9	42.5
Avg.	73.33	80.85	94.85	81.43	81.30	91.90	73.95	63.13	62.55	59.58	61.15	51.80	49.35	43.55	41.13

READING TAKEN IN NIGHT TIME (10:00PM TO 06:00AM)

Night time limit = 70dB(A)

PLANT MACHINERY NOISE						AMBIENT AIR NOISE									
DATE	FLYASH SYSTEM dB(A)	C.H.II dB(A)	C.M.G.BOX dB(A)	C.M.AREA dB(A)	C.H.I dB(A)	TURB.BLD. dB(A)	BOLLER AREA dB(A)	MAIN GATE dB(A)	E. GATE dB(A)	G.BAG.G dB(A)	R.H.STORAGE dB(A)	COLONY M.GATE dB(A)	COLONY E. GATE dB(A)	CHILDREN PARK dB(A)	COLONY W.SIDE dB(A)
06.07.2018	73.4	77.8	91.9	79.7	80.2	88.4	72.5	63.2	62.1	56.1	59.5	49.9	48.2	42.4	40.7
11.07.2018	73.9	78.9	93.5	81.1	82.1	89.3	75.1	61.5	60.8	58.6	57.1	50.6	47.5	43.1	39.8
17.07.2018	69.8	80.3	94.9	80.1	79.2	89.4	72.9	60.2	58.4	57.1	62.9	48.9	48.1	40.1	39.7
26.07.2018	71.2	79.5	95.9	79.6	76.7	92.4	71.5	61.7	61.1	58.8	59.4	53.1	48.1	40.9	41.6
Avg.	72.08	79.13	94.05	80.13	79.55	89.88	73.00	61.65	60.60	57.65	59.73	50.63	47.98	41.63	40.45

Remarks: Use Ear Muff in the area having noise level greater 75dB(A) & 70dB(A) during day time & night time respectively.

Prepared By

AMBUJA CEMENT LIMITED UNIT ROPAR NOISE MONITORING REPORT FROM 01/08/2018 TO 31/08/2018															
PLANT MACHINERY NOISE						AMBIENT AIR NOISE									
DATE	FLYASH SYSTEM dB(A)	C.H.II dB(A)	C.M.G.BOX dB(A)	C.M.AREA dB(A)	C.H.I dB(A)	TURB.BLD. dB(A)	BOLLER AREA dB(A)	MAIN GATE dB(A)	E. GATE dB(A)	G.BAG.G dB(A)	R.H.STORAGE dB(A)	COLONY M.GATE dB(A)	COLONY E. GATE dB(A)	CHILDREN PARK dB(A)	COLONY W.SIDE dB(A)
07.08.2018	74.5	84.1	94.4	80.7	78.5	91.3	73.5	61.8	64.5	59.5	63.6	53.4	51.2	40.9	38.8
16.08.2018	75.7	83.8	93.2	82.4	81.7	92.9	72.2	63.4	62.3	58.8	61.4	54.1	52.6	40.5	40.5
21.08.2018	73.9	81.4	95.5	81.6	80.1	93.8	71.8	64.9	63.7	60.2	62.9	52.7	50.9	42.9	41.1
30.08.2018	75.1	80.5	96.1	82.5	81.9	90.8	70.9	63.2	62.9	55.7	60.3	52.6	52.1	44.1	44.7
Avg.	74.80	82.45	94.80	81.80	80.55	92.20	72.10	63.33	63.35	58.55	62.05	53.20	51.70	42.10	41.28

READING TAKEN IN NIGHT TIME (10:00PM TO 06:00AM)

Night time limit = 70dB(A)

PLANT MACHINERY NOISE						AMBIENT AIR NOISE									
DATE	FLYASH SYSTEM dB(A)	C.H.II dB(A)	C.M.G.BOX dB(A)	C.M.AREA dB(A)	C.H.I dB(A)	TURB.BLD. dB(A)	BOLLER AREA dB(A)	MAIN GATE dB(A)	E. GATE dB(A)	G.BAG.G dB(A)	R.H.STORAGE dB(A)	COLONY M.GATE dB(A)	COLONY E. GATE dB(A)	CHILDREN PARK dB(A)	COLONY W.SIDE dB(A)
07.08.2018	73.6	83.3	93.7	79.5	77.9	90.5	72.6	60.4	62.5	58.7	62.9	51.9	50.6	40.1	37.9
16.08.2018	74.1	81.4	92.8	81.8	80.6	91.1	71.9	61.9	60.8	57.6	60.6	52.6	51.4	39.5	39.6
21.08.2018	71.3	80.5	94.4	80.4	79.3	92.3	70.1	62.6	60.9	58.9	61.1	51.5	48.7	41.8	40.2
30.08.2018	72.3	79.6	93.1	80.4	81.1	89.1	69.8	60.9	61.2	55.1	59.1	50.8	50.9	42.9	42.8
Avg.	72.83	81.20	93.50	80.53	79.73	90.75	71.10	61.45	61.35	57.58	60.93	51.70	50.40	41.08	40.13

Remarks: Use Ear Muff in the area having noise level greater 75dB(A) & 70dB(A) during day time & night time respectively.

AMBUJA CEMENT LIMITED UNIT ROPAR																F-E-060-06
NOISE MONITORING REPORT FROM 01/09/2018 TO 30/09/2018																
READING TAKEN IN DAY TIME (6:00 AM TO 10:00 PM)																
Day time limit =75dB(A)																
PLANT MACHINERY NOISE																
AMBIENT AIR NOISE																
DATE	FLYASH SYSTEM	C.H.II	C.M.G.BOX	C.M.AREA	C.H.I	TURB.BLD.	BOLLER AREA	MAIN GATE	E. GATE	G.BAG.G	R.H.STORAGE	COLONY M.GATE	COLONY E. GATE	CHILDREN PARK	COLONY W.SIDE	
	dB(A)	dB(A)	dB(A)	dB(A)	dB(A)	dB(A)	dB(A)	dB(A)	dB(A)	dB(A)	dB(A)	dB(A)	dB(A)	dB(A)	dB(A)	
04.09.2018	75.1	82.5	95.6	81.2	80.9	92.1	72.7	63.9	64.3	58.9	61.3	51.7	49.5	45.8	44.1	
12.09.2018	77.3	81.7	97.1	89.7	81.9	94.7	73.5	65.0	63.5	60.1	64.1	48.9	48.9	40.1	42.7	
19.09.2018	76.9	85.6	97.9	82.8	83.2	97.9	76.8	64.3	67.3	57.6	63.9	50.4	46.5	47.1	42.9	
28.09.2018	73.0	82.4	96.2	84.6	84.5	91.9	74.7	62.7	62.4	57	63.7	53.1	52.2	43.7	45.2	
Avg.	75.58	83.05	96.70	84.58	82.63	94.15	74.43	63.98	64.38	58.40	63.25	51.03	49.28	44.18	43.73	

READING TAKEN IN NIGHT TIME (10:00PM TO 06:00AM)															Night time limit = 70dB(A)				
←-----PLANT MACHINERY NOISE-----→					←-----AMBIENT AIR NOISE-----→														
DATE	FLYASH SYSTEM dB(A)	C.H.II dB(A)	C.M.G.BOX dB(A)	C.M.AREA dB(A)	C.H.I dB(A)	TURB.BLD. dB(A)	BOLLER AREA dB(A)	MAIN GATE dB(A)	E. GATE dB(A)	G.BAG.G dB(A)	R.H.STORAGE dB(A)	COLONY M.GATE dB(A)	COLONY E. GATE dB(A)	CHILDREN PARK dB(A)	COLONY W.SIDE dB(A)				
04.09.2018	74.9	81.1	94.9	78.9	78.5	91.3	70.8	61.9	63.1	57.4	60.4	50.4	47.1	42.5	42.6				
12.09.2018	74.1	79.4	95.2	87.2	80.1	89.1	72.7	62.4	60.9	58.2	61.8	46.9	43.6	39.8	42.0				
19.09.2018	72.5	83.7	97.1	80.9	82.2	93.4	74.9	63.8	65.8	56.5	61.1	47.1	44.4	45.4	42.1				
28.09.2018	70.08	80.9	95.5	82.5	81.0	90.6	73.5	62.2	61.9	54.7	62.8	48.5	49.8	42.6	43.9				
Avg.	72.90	81.28	95.68	82.38	80.45	91.10	72.98	62.58	62.93	56.70	61.53	48.23	46.23	42.58	42.65				
Remarks: Use Ear Muff in the area having noise level above 70 dB(A). 20% of the time should be less than 70 dB(A).																			

Remarks: Use Ear Muff in the area having noise level greater 75dB(A) & 70dB(A) during day time & night time respectively.

Prepared By 

AMBUJA CEMENT LIMITED UNIT ROPAR																F-E-060-06	
NOISE MONITORING REPORT FROM 01/10/2018 TO 31/10/2018																	
READING TAKEN IN DAY TIME (6:00 AM TO 10:00 PM)																	
Day time limit =75dB(A)																	
PLANT MACHINERY NOISE																	
AMBIENT AIR NOISE																	
DATE	FLYASH SYSTEM	C.H.II	C.M.G.BOX	C.M.AREA	C.H.I	TURB.BLD.	BOLLER AREA	MAIN GATE	E. GATE	G.BAG.G	R.H.STORAGE	COLONY M.GATE	COLONY E. GATE	CHILDREN PARK	COLONY W.SIDE		
	dB(A)	dB(A)	dB(A)	dB(A)	dB(A)	dB(A)	dB(A)	dB(A)	dB(A)	dB(A)	dB(A)	dB(A)	dB(A)	dB(A)	dB(A)		
03.10.2018	73.3	81.6	94.5	82.7	81.5	91.2	74.2	65.6	62.5	59.2	60.5	54.1	49.9	41.1	41.5		
09.10.2018	77.5	82.1	96.2	90.3	80.2	90.3	72.8	62.9	63.9	58.4	64.7	49.6	49.3	42.7	44.1		
18.10.2018	72.8	81.9	96.5	80.9	78.5	94.9	72.9	62.5	62.2	59.1	60.6	54.9	50.4	41.9	42.5		
27.10.2018	76.1	81.4	93.2	79.9	83.4	92.5	75.6	62.6	64.1	60.5	63.1	52.1	48.1	42.9	39.9		
Avg.	74.93	81.75	95.10	83.45	80.90	92.23	73.88	63.40	63.18	59.30	62.23	52.68	49.43	42.15	42.00		

READING TAKEN IN NIGHT TIME (10:00PM TO 06:00AM)															Night time limit = 70dB(A)			
←-----PLANT MACHINERY NOISE-----→					←-----AMBIENT AIR NOISE-----→													
DATE	FLYASH SYSTEM dB(A)	C.H.II dB(A)	C.M.G.BOX dB(A)	C.M.AREA dB(A)	C.H.I dB(A)	TURB.BLD. dB(A)	BOLLER AREA dB(A)	MAIN GATE dB(A)	E. GATE dB(A)	G.BAG.G dB(A)	R.H.STORAGE dB(A)	COLONY M.GATE dB(A)	COLONY E. GATE dB(A)	CHILDREN PARK dB(A)	COLONY W.SIDE dB(A)			
03.10.2018	72.5	81.1	92.8	80.9	83.6	89.9	72.7	63.7	60.8	58.3	59.5	51.4	48.7	40.5	38.4			
09.10.2018	76.7	80.2	98	87.6	79.6	89.1	71.2	61.5	60.1	55.9	62.6	46.1	46.9	41.4	42.1			
18.10.2018	71.2	79.5	95.9	79.6	76.7	92.4	71.5	61.7	61.1	58.8	59.4	53.1	48.1	40.9	41.6			
27.10.2018	75.8	80.5	92.7	79.3	81.5	91.7	74.8	61.8	61.5	58.4	60.3	50.3	47.7	40.9	38.8			
Avg.	74.05	80.33	94.85	81.85	80.35	90.78	72.55	62.18	60.88	57.85	60.45	50.23	47.85	40.93	40.23			

Remarks: Use Ear Muff in the area having noise level greater 75dB(A). 8-70dB(A) during day time.

Remarks: Use Ear Muff in the area having noise level greater 75dB(A) & 70dB(A) during day time & night time respectively.

Prepared By 

AMBUJA CEMENT LIMITED UNIT ROPAR																F-E-060-06	
NOISE MONITORING REPORT FROM 01/11/2018 TO 30/11/2018																	
READING TAKEN IN DAY TIME (6:00 AM TO 10:00 PM)																	
←-----PLANT MACHINERY NOISE-----→						←-----AMBIENT AIR NOISE-----→						Day time limit =75dB(A)					
DATE	FLYASH SYSTEM dB(A)	C.H.II dB(A)	C.M.G.BOX dB(A)	C.M.AREA dB(A)	C.H.I dB(A)	TURB.BLD. dB(A)	BOLLER AREA dB(A)	MAIN GATE dB(A)	E. GATE dB(A)	G.BAG.G dB(A)	R.H.STORAGE dB(A)	COLONY M.GATE dB(A)	COLONY E. GATE dB(A)	CHILDREN PARK dB(A)	COLONY W.SIDE dB(A)		
06.11.2018	76.6	81.4	93.2	79.9	83.4	92.5	75.6	62.6	64.1	60.5	63.1	52.1	48.1	42.9	39.9		
14.11.2018	73.9	79.9	92.5	80.6	81.6	89.1	73.9	65.5	64.2	59.1	60.5	51.2	49.8	45.5	41.3		
23.11.2018	75.4	80.2	94.6	81.3	84.7	91.9	75.9	63.4	63.3	61.6	58.1	51.4	48.3	44.7	40.5		
29.11.2018	73.3	81.6	94.5	82.7	81.5	91.2	72.8	65.6	62.5	59.2	60.5	54.1	49.9	41.1	41.5		

Avg.	74.80	80.78	93.70	81.13	82.80	91.18	74.55	64.28	63.53	60.10	60.55	52.20	49.03	43.55	40.80
------	-------	-------	-------	-------	-------	-------	-------	-------	-------	-------	-------	-------	-------	-------	-------

READING TAKEN IN NIGHT TIME (10:00PM TO 06:00AM)

Night time limit = 70dB(A)

PLANT MACHINERY NOISE						AMBIENT AIR NOISE									
DATE	FLYASH SYSTEM dB(A)	C.H.II dB(A)	C.M.G.BOX dB(A)	C.M.AREA dB(A)	C.H.I dB(A)	TURB.BLD. dB(A)	BOLLER AREA dB(A)	MAIN GATE dB(A)	E. GATE dB(A)	G.BAG.G dB(A)	R.H.STORAGE dB(A)	COLONY M.GATE dB(A)	COLONY E. GATE dB(A)	CHILDREN PARK dB(A)	COLONY W.SIDE dB(A)
06.11.2018	75.8	80.5	92.7	79.3	81.5	91.7	74.8	61.8	61.5	58.4	60.3	50.3	47.7	40.9	38.8
14.11.2018	73.4	77.8	91.9	79.7	80.2	88.4	72.5	63.2	62.1	56.1	59.5	49.9	48.2	42.4	40.7
23.11.2018	73.9	78.9	93.5	81.1	82.1	89.3	75.1	61.5	60.8	58.6	57.1	50.6	47.5	43.1	39.8
29.11.2018	72.5	81.1	92.8	80.9	83.6	89.6	71.7	63.7	60.8	58.3	59.5	51.4	48.7	38.8	38.4
Avg.	73.90	79.58	92.73	80.25	81.85	89.75	73.53	62.55	61.30	57.85	59.10	50.55	48.03	41.30	39.43

Remarks: Use Ear Muff in the area having noise level greater 75dB(A) & 70dB(A) during day time & night time respectively.

Prepared By 

AMBUJA CEMENT LIMITED UNIT ROPAR NOISE MONITORING REPORT FROM 01/12/2018 TO 31/12/2018															
PLANT MACHINERY NOISE						AMBIENT AIR NOISE									
DATE	FLYASH SYSTEM dB(A)	C.H.II dB(A)	C.M.G.BOX dB(A)	C.M.AREA dB(A)	C.H.I dB(A)	TURB.BLD. dB(A)	BOLLER AREA dB(A)	MAIN GATE dB(A)	E. GATE dB(A)	G.BAG.G dB(A)	R.H.STORAGE dB(A)	COLONY M.GATE dB(A)	COLONY E. GATE dB(A)	CHILDREN PARK dB(A)	COLONY W.SIDE dB(A)
04.12.2018	73.5	80.6	94.2	81.5	85.4	89.8	70.6	62.7	65.1	53.9	58.3	51.5	48.9	43.8	40.9
13.12.2018	75.1	81.1	98.1	83.8	84.9	91.7	72.3	62.4	63.8	55.4	62.2	50.2	52.1	41.4	45.1
21.12.2018	77.3	81.7	97.1	99.7	81.9	91.7	73.5	65	63.5	60.1	64.1	48.9	48.9	43.1	42.7
26.12.2018	76.1	82.3	96.9	99.9	80.5	90.4	75.1	64.5	64.2	59.6	63.8	49.2	46.7	42.3	43.1
Avg.	75.50	81.43	96.58	91.23	83.18	90.90	72.88	63.65	64.15	57.25	62.10	49.95	49.15	42.65	42.95

READING TAKEN IN NIGHT TIME (10:00PM TO 06:00AM)

Night time limit = 70dB(A)

PLANT MACHINERY NOISE						AMBIENT AIR NOISE									
DATE	FLYASH SYSTEM dB(A)	C.H.II dB(A)	C.M.G.BOX dB(A)	C.M.AREA dB(A)	C.H.I dB(A)	TURB.BLD. dB(A)	BOLLER AREA dB(A)	MAIN GATE dB(A)	E. GATE dB(A)	G.BAG.G dB(A)	R.H.STORAGE dB(A)	COLONY M.GATE dB(A)	COLONY E. GATE dB(A)	CHILDREN PARK dB(A)	COLONY W.SIDE dB(A)
04.12.2018	72.5	80.1	91.7	80.5	83.9	87.6	69.7	58.5	63.6	53.1	56.1	48.2	45.9	42.8	39.5
13.12.2018	74.1	80.9	96.3	82.3	84.2	90.3	67.9	61.8	62.1	54.9	60.5	46.9	51.2	40.5	42.3
21.12.2018	74.5	81.4	95.9	99.2	80.1	89.1	72.7	61.9	63.4	58.2	61.8	48.9	43.6	41.8	42
26.12.2018	77.3	81.7	96.1	99.1	79.7	89.6	73.5	63.1	63.6	58.7	63.7	44	45.2	41.2	42.6
Avg.	74.60	81.03	95.00	90.28	81.98	89.15	70.95	61.33	63.18	56.23	60.53	47.00	46.48	41.58	41.60

Remarks: Use Ear Muff in the area having noise level greater 75dB(A) & 70dB(A) during day time & night time respectively.

Prepared By 

AMBUJA CEMENT LIMITED UNIT ROPAR NOISE MONITORING REPORT FROM 01/01/2019 TO 31/01/2019															
PLANT MACHINERY NOISE						AMBIENT AIR NOISE									
DATE	FLYASH SYSTEM dB(A)	C.H.II dB(A)	C.M.G.BOX dB(A)	C.M.AREA dB(A)	C.H.I dB(A)	TURB.BLD. dB(A)	BOLLER AREA dB(A)	MAIN GATE dB(A)	E. GATE dB(A)	G.BAG.G dB(A)	R.H.STORAGE dB(A)	COLONY M.GATE dB(A)	COLONY E. GATE dB(A)	CHILDREN PARK dB(A)	COLONY W.SIDE dB(A)
02.01.2019	72.1	85.7	94.8	83.9	81.2	90.7	75.3	64.9	60.8	60.1	59.5	53.6	52.5	39.2	40.2
08.01.2019	70.8	84.3	92.9	85.6	80.5	93.6	73.5	60.8	61.7	57.7	63.1	52.8	51.4	41.9	43.6
17.01.2019	73.3	81.6	94.5	82.7	83.6	91.2	72.8	65.6	62.5	59.2	60.5	54.1	49.9	41.1	41.5
25.01.2019	75.1	80.5	96.1	82.5	81.9	90.8	70.9	63.2	62.9	55.7	60.3	52.6	52.1	44.1	44.7
30.01.2019	73.9	81.2	94.5	79.2	82.2	94.2	72.1	64.5	61.6	60.1	63.1	55.9	51.4	43.2	41.9
Avg.	73.04	82.66	94.56	82.78	81.88	92.10	72.92	63.80	61.90	58.56	61.30	53.80	51.46	41.90	42.38

READING TAKEN IN NIGHT TIME (10:00PM TO 06:00AM)

Night time limit = 70dB(A)

PLANT MACHINERY NOISE						AMBIENT AIR NOISE									
DATE	FLYASH SYSTEM dB(A)	C.H.II dB(A)	C.M.G.BOX dB(A)	C.M.AREA dB(A)	C.H.I dB(A)	TURB.BLD. dB(A)	BOLLER AREA dB(A)	MAIN GATE dB(A)	E. GATE dB(A)	G.BAG.G dB(A)	R.H.STORAGE dB(A)	COLONY M.GATE dB(A)	COLONY E. GATE dB(A)	CHILDREN PARK dB(A)	COLONY W.SIDE dB(A)
02.01.2019	68.9	83.7	94.3	83.5	80.6	90.7	74.5	62.6	59.7	59.7	57.6	52.5	50.9	38.1	39.5
08.01.2019	70.2	80.9	91.4	84.6	79.3	93.1	72.3	59.2	58.2	56.5	60.3	47.9	51.1	40.3	40.1
17.01.2019	72.5	81.1	92.8	80.9	81.5	89.6	71.7	63.7	60.8	58.3	59.5	51.4	48.7	38.8	38.4
25.01.2019	72.3	79.6	93.1	80.4	81.1	89.1	69.8	60.9	61.2	55.1	59.1	50.8	50.9	42.9	42.8
30.01.2019	70.9	80.1	93.7	78.2	81.2	92.3	71.5	62.4	59.9	59.4	60.2	52.3	51.1	42.1	40.9
Avg.	70.96	81.08	93.06	81.52	80.74	90.96	71.96	61.76	59.92	57.8	59.34	50.98	50.54	40.44	40.34

AMBUJA CEMENT LIMITED UNIT ROPAR															F-E-060-06	
NOISE MONITORING REPORT FROM 01/02/2019 TO 28/02/2019																
READING TAKEN IN DAY TIME (6:00 AM TO 10:00 PM)															Day time limit =75dB(A)	
PLANT MACHINERY NOISE					AMBIENT AIR NOISE											
DATE	FLYASH SYSTEM dB(A)	C.H.II dB(A)	C.M.G.BOX dB(A)	C.M.AREA dB(A)	C.H.I dB(A)	TURB.BLD. dB(A)	BOLLER AREA dB(A)	MAIN GATE dB(A)	E. GATE dB(A)	G.BAG.G dB(A)	R.H.STORAGE dB(A)	COLONY M.GATE dB(A)	COLONY E. GATE dB(A)	CHILDREN PARK dB(A)	COLONY W.SIDE dB(A)	
05.02.2019	75.1	82.8	94.2	81.4	85.7	92.1	72.8	60.4	64.3	57.8	59.4	52.1	52.2	41.5	41.5	
12.02.2019	73.6	80.4	96.5	84.6	83.1	93.5	71.6	61.7	63.7	59.2	62.9	51.7	50.1	44.9	40.4	
21.02.2019	71.9	80.2	95.9	80.6	84.1	91.8	71.6	64.8	60.7	54.9	60.5	54.1	48.1	42.8	38.3	
27.02.2019	70.7	84.6	97.1	81.3	83.6	92.2	70.1	61.2	62.1	57.1	65.6	51.2	47.8	43.7	38.7	
Avg.	72.83	82.00	95.93	81.98	84.13	92.40	71.53	62.03	62.70	57.25	62.10	52.28	49.55	43.23	39.73	

READING TAKEN IN NIGHT TIME (10:00PM TO 06:00AM)															Night time limit = 70dB(A)	
PLANT MACHINERY NOISE					AMBIENT AIR NOISE											
DATE	FLYASH SYSTEM dB(A)	C.H.II dB(A)	C.M.G.BOX dB(A)	C.M.AREA dB(A)	C.H.I dB(A)	TURB.BLD. dB(A)	BOLLER AREA dB(A)	MAIN GATE dB(A)	E. GATE dB(A)	G.BAG.G dB(A)	R.H.STORAGE dB(A)	COLONY M.GATE dB(A)	COLONY E. GATE dB(A)	CHILDREN PARK dB(A)	COLONY W.SIDE dB(A)	
05.02.2019	74.4	81.6	91.8	80.8	80.6	91.3	71.7	57.2	61.1	55.6	58.6	51.8	51.4	39.5	39.6	
12.02.2019	72.1	78.9	95.4	82.4	81.3	92.3	70.5	60.6	62.5	57.9	61.1	50.6	48.9	43.8	37.2	
21.02.2019	70.8	78.1	93.6	82.1	82.9	89.3	69.9	63.1	59.3	54.1	59.8	52.3	47.9	40.1	36.1	
27.02.2019	69.9	82.5	95.3	79.3	80.2	90.9	69.5	59.6	61.9	55.3	63.5	50.2	46.8	42.6	35.8	
Avg.	71.80	80.28	94.03	81.15	81.25	90.95	70.40	60.13	61.20	55.73	60.75	51.23	48.75	41.50	37.18	

Remarks: Use Ear Muff in the area having noise level greater 75dB(A) & 70dB(A) during day time & night time respectively.

Prepared By 

AMBUJA CEMENT LIMITED UNIT ROPAR															F-E-060-06	
NOISE MONITORING REPORT FROM 01/03/2019 TO 31/03/2019																
READING TAKEN IN DAY TIME (6:00 AM TO 10:00 PM)															Day time limit =75dB(A)	
PLANT MACHINERY NOISE					AMBIENT AIR NOISE											
DATE	FLYASH SYSTEM dB(A)	C.H.II dB(A)	C.M.G.BOX dB(A)	C.M.AREA dB(A)	C.H.I dB(A)	TURB.BLD. dB(A)	BOLLER AREA dB(A)	MAIN GATE dB(A)	E. GATE dB(A)	G.BAG.G dB(A)	R.H.STORAGE dB(A)	COLONY M.GATE dB(A)	COLONY E. GATE dB(A)	CHILDREN PARK dB(A)	COLONY W.SIDE dB(A)	
07.03.2019	75.1	82.8	94.2	81.4	83.7	92.1	72.8	60.4	64.3	57.8	59.4	52.1	52.2	41.5	41.5	
13.03.2019	73.6	80.4	96.5	84.6	83.1	93.5	71.6	61.7	63.7	59.2	62.9	51.7	50.1	44.9	40.4	
20.03.2019	68.9	81.7	94.9	78.8	80.5	94.1	70.5	60.1	60.9	54.9	62.1	51.9	46.2	39.5	37.8	
29.03.2019	70.4	82.8	95.3	80.9	81.9	90.3	73.1	63.7	64.1	55.8	63.4	52.4	43.6	40.8	40.5	
Avg.	72.00	81.93	95.23	81.43	82.30	92.50	72.00	61.48	63.25	56.93	61.95	52.03	48.03	41.68	40.05	

READING TAKEN IN NIGHT TIME (10:00PM TO 06:00AM)															Night time limit = 70dB(A)	
PLANT MACHINERY NOISE					AMBIENT AIR NOISE											
DATE	FLYASH SYSTEM dB(A)	C.H.II dB(A)	C.M.G.BOX dB(A)	C.M.AREA dB(A)	C.H.I dB(A)	TURB.BLD. dB(A)	BOLLER AREA dB(A)	MAIN GATE dB(A)	E. GATE dB(A)	G.BAG.G dB(A)	R.H.STORAGE dB(A)	COLONY M.GATE dB(A)	COLONY E. GATE dB(A)	CHILDREN PARK dB(A)	COLONY W.SIDE dB(A)	
07.03.2019	74.4	81.6	91.8	80.8	80.6	91.3	71.7	57.2	61.1	55.6	58.6	51.8	51.4	39.5	39.6	
13.03.2019	72.1	78.9	95.4	82.4	81.3	92.3	70.5	60.6	62.5	57.9	61.1	50.6	48.9	43.8	37.2	
20.03.2019	67.7	79.1	93.1	78.6	79.3	92.5	68.5	58.9	57.6	52.2	61.1	50.7	41.9	37.1	35.9	
29.03.2019	69.9	80.7	94.1	80.1	81.1	89.4	71.6	61.2	62.9	54.7	62.3	51.4	41.8	39.7	39.7	
Avg.	71.03	80.08	93.60	80.48	80.58	91.38	70.58	59.48	61.03	55.10	60.78	51.13	46.00	40.03	38.10	

Remarks: Use Ear Muff in the area having noise level greater 75dB(A) & 70dB(A) during day time & night time respectively.

Prepared By 



HARISH OBEROI & ASSOCIATES

CHARTERED ACCOUNTANTS

H.O. : # 2443, Near Jain Janj Ghar, Ropar - Punjab

Branch : A-4F, 1st Floor, Big B Complex, Above HDFC Bank, Baddi (H.P.)

Ph. : 98556-22718, 83601-75769, 78372-00999, 83519-82718 | E-mail : oberoiharish@yahoo.com

This is certified that Ambuja Cement Foundation Ropar has incurred the expenditure for the following CSR activities as motioned below:

EXPENDITURE FOR THE YEAR 2018 – 2019		
S. No.	Programme / Activity	Amount In Rs.
1.	Agro Based Livelihood	641443
2.	Education- Ambuja Manovikas Kendra	6623398
3.	Health & Sanitation	194424
4.	Women Development	319698
5.	Integrated Community Development Programme	2472094
6.	Water Recourse Development	1291282
7.	Unplanned activities (Safety Workshops in nearby villages & other unplanned activities)	6320
8.	Capital items	771384
9.	Establishment	3803252
Grand Total		16123295

Dated : 09.08.2019

For Harish Oberoi & Associates

Place : Ropar



Chartered accountants

Chartered Accountants

Harish Kumar

[Partner]

UDIN: 19089954AAAAA Q4937

AMBUJA CEMENT FOUNDATION ROPAR

PROPOSED CSR EXPENDITURE FOR THE FIVE YEAR (April 2019- March 2024)

Sr. No.	Activity Head	2019-2020 Amount in Rs.	2020-2021 Amount in Rs.	2021-2022 Amount in Rs.	2022-2023 Amount in Rs.	2023-2024 Amount in Rs.
1	Agro Based Livelihood	1684350	1852785	2038064	2241869	2466056
2	Education- Ambuja Manovikas Kendra	4379500	4817450	5299195	5829114	6412025
3	Health & Sanitation	531050	584155	642570	706827	777510
4	Women Development	399600	439560	483516	531867	585054
5	Integrated Community Development Programme	3100000	3410000	3751000	4126100	4538710
6	Water Recourse Development	1050000	1155000	1270500	1397550	1537305
7	Unplanned activities (Safety Workshops in near by villages & other unplanned activities)	76000	83600	91960	101156	111271
8	Capital items	256500	282150	310365	341401	375541
9	Establishment	4020120	4422132	4864345	5350779	5858857
TOTAL		1,54,97,120	1,70,46,832	1,87,51,515	2,06,26,663	2,26,62,329

World Environment Day Celebration at Ambuja Cements Ltd., Ropar (Pb.)

5th June, 2019

THEME - BEAT AIR POLLUTION

World Environment Day was celebrated at Ambuja Cements Ltd., Ropar Unit with full participation of employees , workers and their families. Various events like Drawing competition, Poem Competition, Slogan Competition were organized to mark the occasion. A Speech was given by employee children on the environment awareness to the gathering on the occasion.

On this occasion, a pledge was taken by all the employees to save our environment. An Environmental Quiz competition & slogan being organized for all employees and neighboring villages' Govt schools children awarded with various prizes.

Saplings of different varieties were planted by employees inside the plant. During the Ceremony Sh. Rajiv Jain (Sr. Vice President) has addressed the gathering and emphasized on the need of some major steps to be taken to protect our environment and save the natural resources for our coming generations. He emphasized the theme , Beat the Air Pollution", for World Environment 2019, urges to individuals to come together and explore sustainable alternatives and plant tree as much as possible to protect the ozone layer .

Indian philosophy and lifestyle has long been rooted in the concept of co-existence with nature. We are committed to making Planet Earth a cleaner and greener place.

He added: "If each and every one of us does at least one green good deed daily towards our Green Social Responsibility, there will be billions of green good deeds daily on the planet."He said "climate change & global warming are current significant environmental issues, as we all are experiencing that temperature is rising day by day resulting our Glaciers are melting and ultimately abnormality in the .

On this occasion different varieties of sapling like Neem ,Sukhchain etc was planted in the plant site .

Glimpses of the World Environment day 2019 as given below:

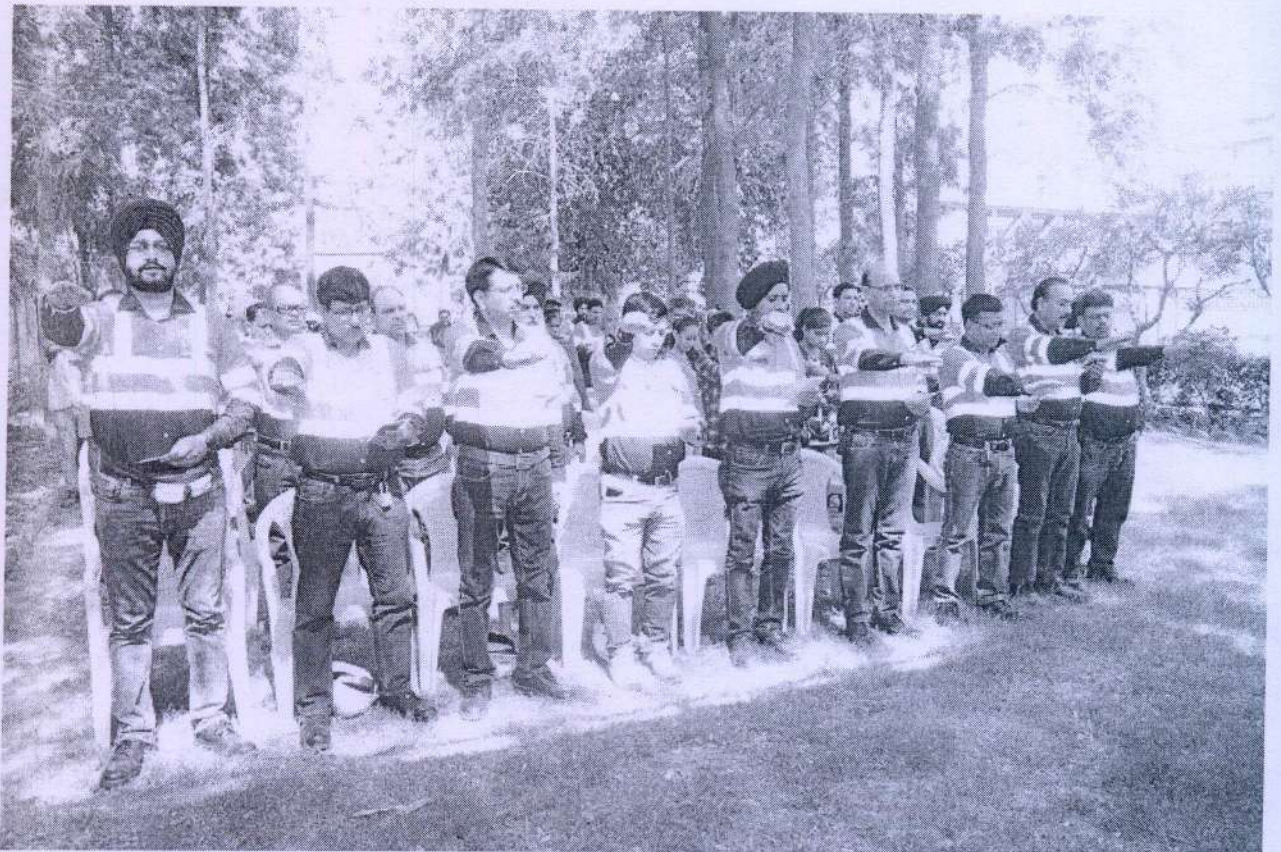
Rajiv Jain (Sr. Vice President) & Subhash Awasthi (Sr. Manager – Environment & Sustainability) is addressing to the Employees & School Children's On the occasion World Environment Day 2019 .



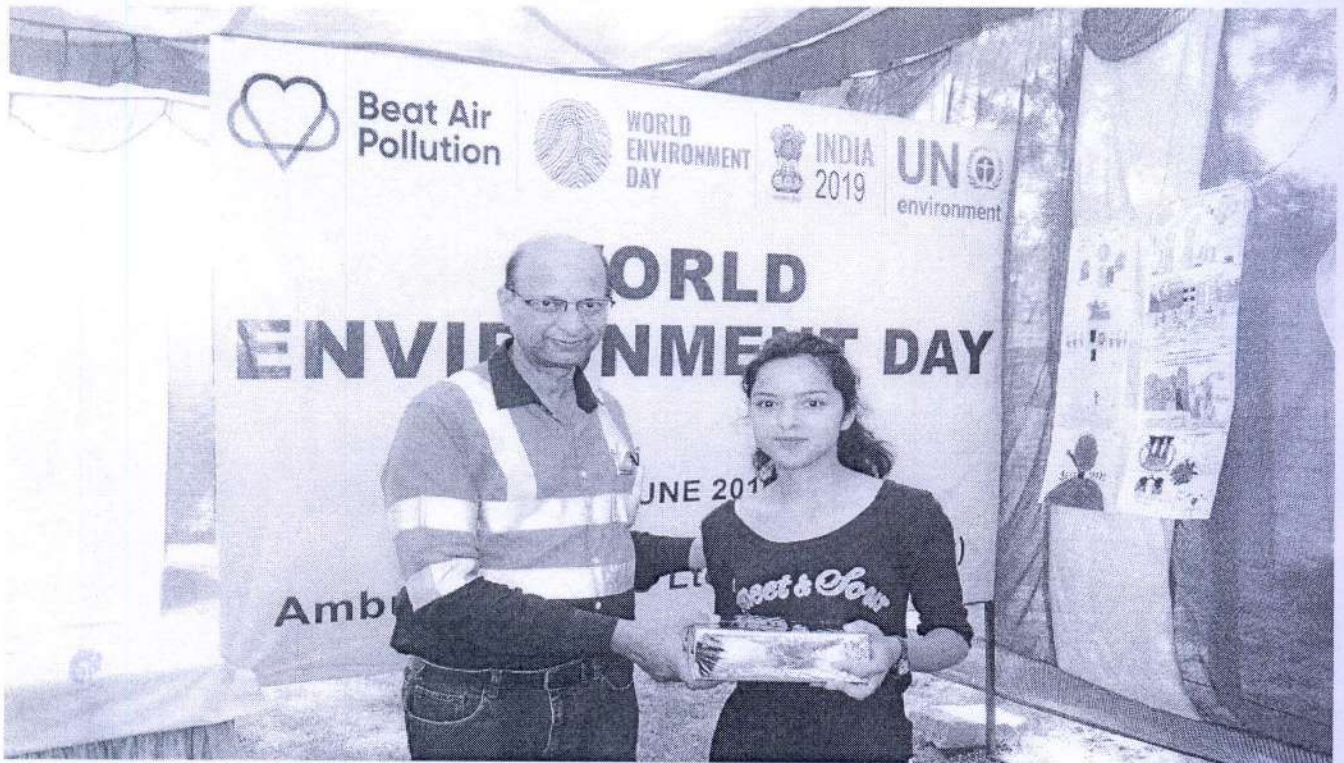
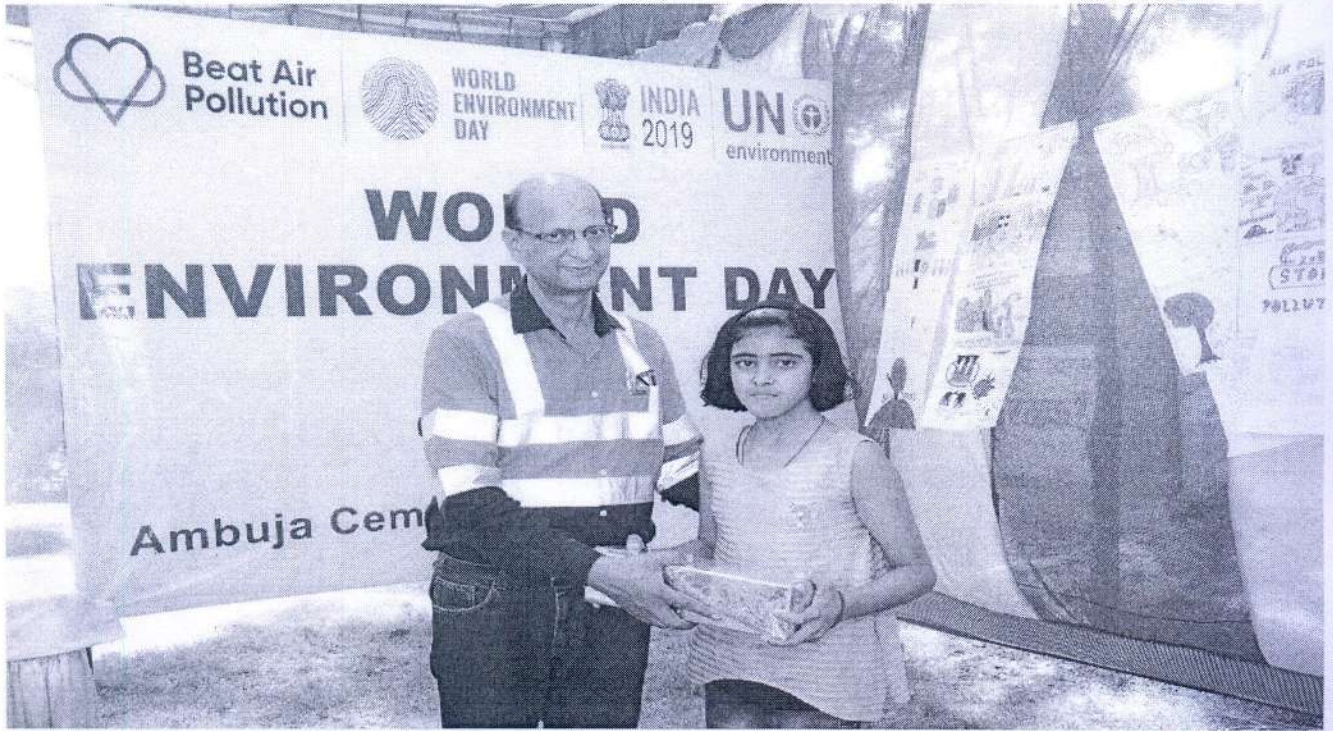
2 Speech by school children On the Environment Awareness :



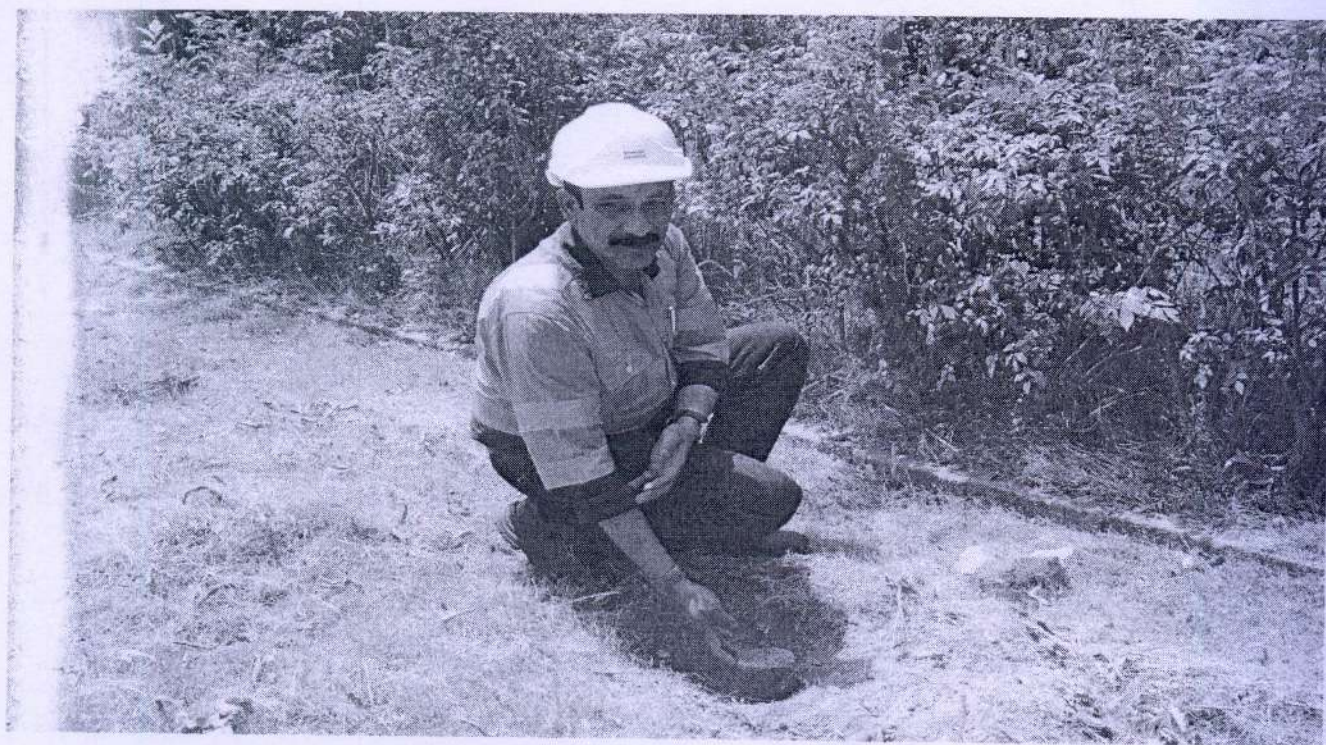
3. Pledge to Save Environment:



4 Prizes being distributed by Sh Rajiv Jain & HOD's to the Winners of various events organized



5 Plantation done at project site by employees on the occasion of World Environment Day



5 Plantation done at project site by employees on the occasion of World Environment Day



AMBUJA CEMENTS LTD UNIT ROPAR

Electricity Consumption for operation of ETP from April, 2018 to March, 2019

Month	Total Units Consumed (kwh)	Total Expenditure (Rs.)
Apr-18	5150	26780.00
May-18	5377	27960.40
Jun-18	4700	24440.00
Jul-18	4939	25682.80
Aug-18	5201	27045.20
Sep-18	5189	26982.80
Oct-18	5240	27248.00
Nov-18	5343	27783.60
Dec-18	4713	24507.60
Jan-19	5646	29359.20
Feb-19	4309	22406.80
Mar-19	5177	26920.40
Total	60984.00	317116.80

Total Amount : Rs. Three Lac Seventeen Thousand One Hundred Seventeen Only.

Electricity Consumption for operation of ETP(EVAPORATOR) from April, 2018 to March, 2019

Month	Total Units Consumed (kwh)	Total Expenditure (Rs.)
Apr-18	3918	20373.60
May-18	3853	20035.60
Jun-18	1348	7009.60
Jul-18	0*	
Aug-18	0*	
Sep-18	0*	
Oct-18	2919	15178.80
Nov-18	3187	16572.40
Dec-18	2875	14950.00
Jan-19	3555	18486.00
Feb-19	3215	16718.00
Mar-19	3065	15938.00
Total	27935.00	145262.00

Total Amount : Rs. One Lac Forty Five Thousand Two Hundred Sixty Two Only.

Total ETP Cost including Evaporator	462378.80
--	------------------

Remark* : The evaporator calendra was under maintence due to scaling .The same was not in opeartion However there is provsion for reject of RO being collected from solar pond and thereafter it has been tranfer to combined effulent tank for further feed water to ETP .

AMBUJA CEMENTS LTD UNIT ROPAR**Electricity Consumption for operation of STP from April, 2018 to March,2019**

Month	Total Units Consumed(kwh)	Total Expenditure (Rs.)
Apr-18	9700	50440.00
May-18	10488	54537.60
Jun-18	10652	55390.40
Jul-18	12479	64890.80
Aug-18	11501	59805.20
Sep-18	12740	66248.00
Oct-18	10815	56238.00
Nov-18	12065	62738.00
Dec-18	10008	52041.60
Jan-19	3150	16380.00
Feb-19	4705	24466.00
Mar-19	5401	28085.20
Total	113704	591260.80

Total Amount : Rs. Five Lac Ninty One Thousand Two Hundred Sixty One Only.

CPP BOILER ESP POWER CONSUMPTION AND COST
Energy Meter Reading ESP (April 2018 -March 2019)

Month	ESP 1				ESP 2				ESP 3			
	Intial Reading (KWH)	Closed Reading (KWH)	diff.	Total (KWH)	Intial Reading (KWH)	Closed Reading (KWH)	diff.	Total (KWH)	Intial Reading (KWH)	Closed Reading (KWH)	diff.	Total (KWH)
Apr-18	628.84	636.63	7.79	7790	915.68	925.54	9.86	9860	922.38	922.72	0.34	340
May-18	636.63	644.44	7.81	7810	925.54	935.95	10.41	10410	922.72	923	0.28	280
Jun-18	644.44	655.81	11.37	11370	935.95	945.29	9.34	9340	923	923.26	0.26	260
Jul-18	655.81	665.9	10.09	10090	945.29	953.85	8.56	8560	923.26	923.53	0.27	270
Aug-18	665.9	675.35	9.45	9450	953.85	964.77	10.92	10920	923.53	923.8	0.27	270
Sep-18	675.35	682.58	7.23	7230	964.77	974.68	9.91	9910	923.8	924.06	0.26	260
Oct-18	682.58	692.51	9.93	9930	974.68	983.33	8.65	8650	924.06	924.35	0.29	290
Nov-18	692.51	697.26	4.75	4750	983.33	993.31	9.98	9980	924.35	924.64	0.29	290
Dec-18	697.26	702.2	4.94	4940	993.31	1003.95	10.64	10640	924.64	924.95	0.31	310
Jan-19	702.2	705.42	3.22	3220	1003.95	1009.36	5.41	5410	924.95	925.24	0.29	290
Feb-19	705.42	709.95	4.53	4530	1009.36	1016.6	7.24	7240	925.24	925.46	0.22	220
Mar-19	709.95	718.5	8.55	8550	1016.6	1019.29	2.69	2690	925.46	925.68	0.22	220
Total Unit Consumed				89660					103610			3300

Total Power Consumed in ESP (April 2017- March 2018)

196570

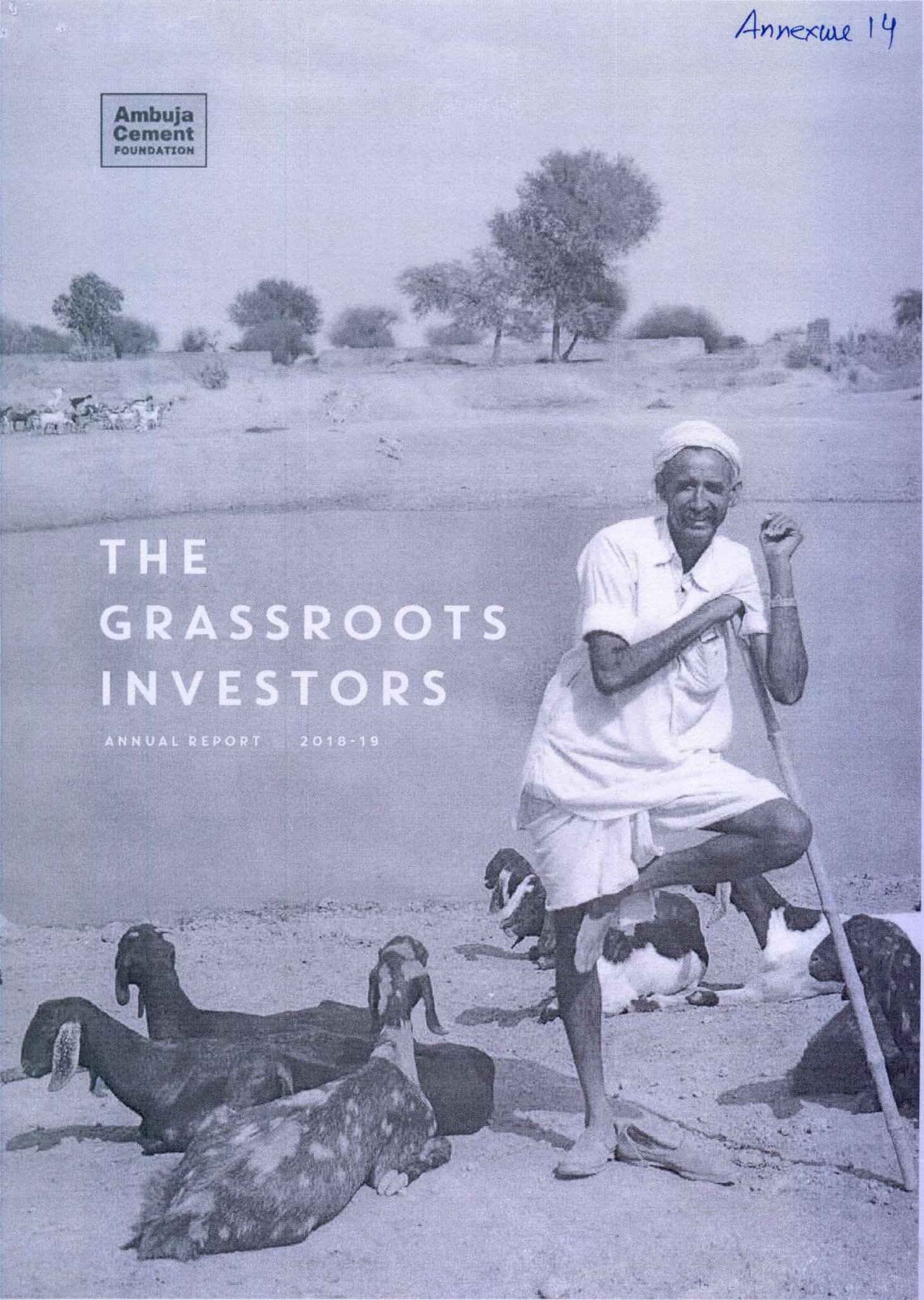
Total Cost of Power Consumed in CPP plant for ESP

1022164

**Ambuja
Cement**
FOUNDATION

THE GRASSROOTS INVESTORS

ANNUAL REPORT 2018-19



AGRICULTURE HIGHLIGHTS

The feed from new milling machines is helping 34% farmers improve milk production, whilst simultaneously creating a new profitable enterprise for FPO Members, which saw 56% of farmers increase their monthly profit by Rs.1000-3000.



WOMEN TRAIN COTTON FARMERS

At ACF's Better Cotton Initiative (BCI), 17% of staff are female workers, tasked with providing knowledge and skills to male dominated groups of cotton farmers, to enhance farming techniques. ACF involved women in their field teams to change rigid mindsets and stereotypes.

FPO STARTS NEW FEED MILL

To support its farmers with quality feed at reasonable rates, the Farmer Producer organization in Kodinar purchased and installed a new milling machine that converts raw grains and seeds into premium feed for cattle. The feed is helping 34% farmers improve milk production, whilst simultaneously creating a new profitable enterprise for FPO members which saw 56% farmers increase their monthly profit by Rs. 1000-3000.

FARMERS SELL COTTON ON MCX

For the first time ever in India, Cotton Farmers in Somnath (Gujarat) value added their cotton, bypassed middlemen, sold cotton bales and delivered the produce directly to the Multi Commodities Exchange (MCX) platform, resulting in an extra Rs. 5.2 profit per kilo for every farmer. Farmers from the Somnath Farmer Produce Company (SFPCL) produce approximately 6000 tonnes of cotton every year with a potential to generate an additional Rs. 3.12 crores profit for farmers in similar market conditions. This will be a 'game changer' as ACF is currently engaged with over 1.21 lakh Cotton Farmers across India who will be able to generate more profit in similar market conditions through this initiative.

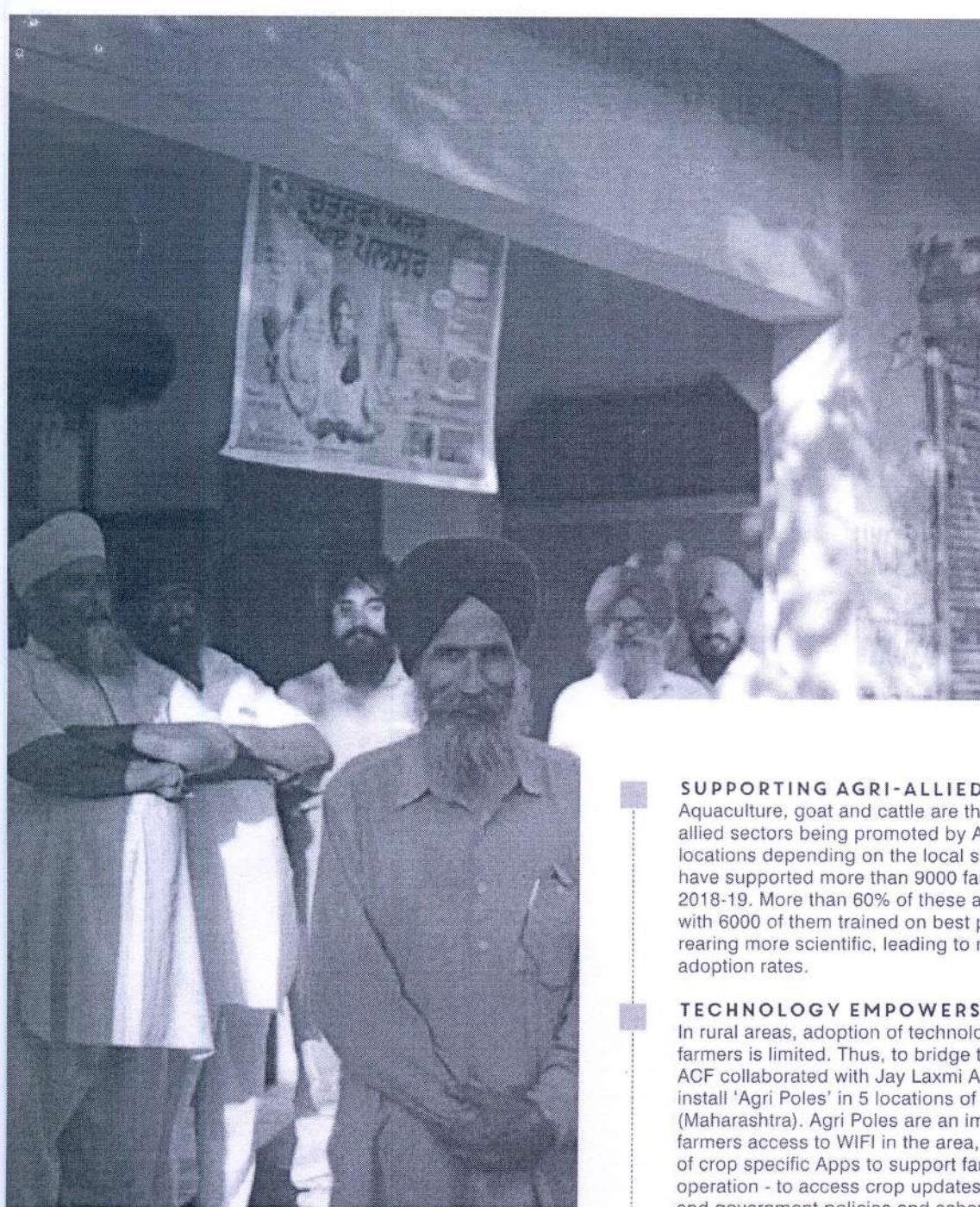
SCAFFOLDING & RAINSHELTERS INCREASE PROFITS

Farmers in Sankrail are capitalising on market fluctuations by harnessing rain-shelters and scaffolding to grow vegetables in the off-season – increasing crop income by 128% (scaffolding) and 45% (rain-shelters) as a result. Farmers were facing many issues in relation to vegetable cultivation that meant growing seasonal vegetables was not profitable.

ACF began monitoring both the market prices for vegetables, along with the supply of vegetables each season and promoted the use of Scaffolding and Rain Shelters to counter problems of water logging and help farmers increase profits.

DRIP IRRIGATION IN PUNJAB

ACF overcame a significant hurdle, when they convinced 7 farmers in Punjab to install Drip Irrigation systems. Whilst Drip Irrigation is a major feature in other ACF locations, it was a tough sell in Punjab where farmers have access to free water in canals and free electricity to extract water from bore wells, to flood irrigate their crops. In such conditions motivating farmers to install drip irrigation was an achievement within itself - 7 drip irrigation systems were installed, with each farmer yielding an extra 200 kgs of cotton as a result. It is a significant step to help tackle the looming water crisis in Punjab.



Rupnagar Producer Company limited (RPCL) (Punjab) has secured a license to operate a stall in the Agricultural Produce Market - helping farmers to sell their produce at the minimum support price prescribed by the Government.

SUPPORTING AGRI-ALLIED SECTORS

Aquaculture, goat and cattle are three major agri-allied sectors being promoted by ACF in various locations depending on the local situations. In all we have supported more than 9000 families in the year 2018-19. More than 60% of these are women farmers with 6000 of them trained on best practices to make rearing more scientific, leading to more than 70% adoption rates.

TECHNOLOGY EMPOWERS FARMERS

In rural areas, adoption of technology among farmers is limited. Thus, to bridge the digital divide, ACF collaborated with Jay Laxmi Agro Tech to install 'Agri Poles' in 5 locations of Chandrapur (Maharashtra). Agri Poles are an implement that give farmers access to WIFI in the area, and also a variety of crop specific Apps to support farmers in their operation - to access crop updates, new techniques, and government policies and schemes. 320 farmers are currently using the apps to garner information on pests and various control mechanisms.

RUPNAGAR FPO GAINS APMC LICENSE

Rupnagar Producer Company limited (RPCL) (Punjab) has secured a license to operate a stall at the Agricultural Produce Market - helping farmers to sell their produce at the minimum support price prescribed by the Government, in the wholesale market which is usually dominated by traders and middlemen. The FPO is now a registered vendor to buy and sell agricultural produce and this year it forged a partnership with the Punjab State Civil Supplies Corporation Limited and Punjab Agro to procure produce for the 2018-19 twelve month period.

AMBUJA MANOVIKAS KENDRA

Ambuja Manovikas Kendra, an institution standing strong for the past 19 years, is training 121 children with intellectual disabilities - of which 93 are enrolled in regular schooling, 13 are under home-based rehabilitation and 15 under the skill and resource center.

SECOND BATCH COMPLETES NIOS EXAMS

AMK students are once again re-defining what a person can achieve when living with a disability. This year, 4 students from AMK appeared for, and passed with marks ranging from 60-79%, in the National Institute of Open School (NIOS) 10th Grade Examinations. This was the second batch to appear for the exams and Jashandeep Singh, Vikas Kumar, Amandeep Singh and Jaskaran Kaur did AMK and their families proud by passing with flying colors. In a stand out effort, Jashandeep Singh excelled with a top score of 79%.

EXTRA CURRICULAR ACCOLADES FOR AMK

Beyond the focus of education, AMK also provides students with a range of recreational and extra-curricular activities. Students received the following awards and recognition. Ms. Ramandeep Kaur (Junior) won 1st place in National Level Painting Competition, 4 athletes

from the Punjab Floor Hockey team won a Gold Medal at the National Championships; for the 13th consecutive year in a row, AMK won the overall championship trophy in the 21st Punjab State Special Olympics games; and Ms. Ramandeep Kaur (Senior) was a member of the Indian Unified Female Football team that participated in the World Cup held in Chicago.

STATE LEVEL AWARDS BESTOWED ON AMK

On the occasion of World Disability Day, the Government of Punjab acknowledged and facilitated individuals who have excelled in their own endeavours - Neha won the Best Sportsperson with Disability; Kamaljeet Singh won the Best Self-Employed Person with Disability; and Suresh Kumar Thakur won the Best Individual in the Professional Category working for the cause of Persons with Disabilities in the state.

FIRST BATCH OF GRADUATES FROM AMK SKILL TRAINING FACILITY

In August 2018, the first batch of 17 trainees in Ropar graduated in three trades - artificial jewellery making, pottery and baking. With the help of their parents, 15 students started their own enterprises selling jewelry, pots and bakery items.



LIVELIHOODS FOR PEOPLE WITH SPECIAL NEEDS

INVESTOR

CIPLA FOUNDATION

PROJECT

SKILL DEVELOPMENT & REHABILITATION CENTRE FOR DIFFERENTLY-ABLED YOUTH

LOCATIONS

ROPAR, PUNJAB

DURATION

2018 - ONGOING

3 COURSES
ON OFFER

15 HOME
ENTERPRISES
LAUNCHED

15
GRADUATES

A TARGET OF
50 SELF-
RELIANT SPECIAL
NEEDS ADULTS
BY 2020

AMK was facing a challenge. On completion of schooling at AMK, young, differently-abled youth found themselves at a crossroads in life. There was a need, an opportunity in fact, to meaningfully engage these special needs adults in activity. To help them become economically independent. But on completion of schooling, these empowered adults were unable to obtain jobs – even self-employment was difficult – resulting in a loss of confidence and hope for the future.

To solve this challenge, ACF and Cipla Foundation joined hands, together establishing a full-fledged, skill development and rehabilitation centre, cum production unit. The philosophy behind the centre is to train youth in different vocations, which will help them in becoming financially independent and productive members of society.

ACF and Cipla Foundation agreed to start the project with 15 trainees in the first year with three vocations – a Bakery Unit, Pottery Work and Artificial Jewellery, and over the next 3 years, set a target to rehabilitate 50 trainees.

A visit to the Centre is uplifting. Small groups of passionate trainees, diligently performing their tasks – cooking up a batch of homemade cookies, packaging them, and preparing them for market. Looping colourful beads together to form a necklace, bracelet or earring, standing with pride to show you their finished product.

The skill development and rehabilitation centre aims to:

- Develop relevant vocational skills and competence among the intellectually and multiple differently-abled youth.
- Serve intellectually and multiple differently-abled youth, emphasizing school to career and other career readiness programmes, in partnership with parents, differently-abled friendly industries and corporate houses.
- Build awareness about career and employment options for the intellectually and multiple differently-abled individuals; and provide education, training and workplace experiences

In 2018 the first batch graduated with help from ACF and Cipla Foundation. 15 trainees have established their own small, homebased enterprises – independently creating products for sale.

The next batch of 15 students have already enrolled at the Skill Development Centers and training has commenced. Together, ACF & Cipla Foundation are re-defining pathways for special needs adults, who are showing AMK, their families and communities that they too, can be breadwinners! ■



RESEARCH & MONITORING



The Research and Monitoring Unit helps to objectively and systematically oversee the implementation, progress and impact of programmes at ACF. It provides a vital function to assure our board, funders and beneficiaries, that the work we are doing is scrutinized, course corrected where needed, and refined. Our aim is that over time, we are more efficient, more effective and deliver more on-ground results. The research we undertake, helps us provide more impact, and time and again, our studies have shown a multiplier effect on the ground, from every rupee invested in our rural communities. ACF follows an evidence based practice while planning and implementing development initiatives.

This year our efforts focused on the following initiatives:

IMPACT ASSESSMENT: LOKVANI, COMMUNITY RADIO, KODINAR

ACF appointed Mudra Institute of Communications, Ahmedabad (MICA), a leading agency in communication research, to conduct an Impact Assessment of the Community Radio at Krishi Vigyan Kendra, Kodinar. The study was conducted in 3 clusters based on their distances from KVK and highlighted the following:

- Nearly 30% of farmers and 56% of fishermen from the study sample listen to Lokvani. Overall, 27.5% of respondents listen to Lokvani regularly and listenership is higher among males.

- Out of the Lokvani listeners nearly 60% listen to Lokvani daily and another 32% listen to it at least once in a week.
- Nearly 40% of the Lokvani listeners ranked Lokvani as their number 1 source of information and another 20% ranked Lokvani at number 2, with similar proportion ranking it number 3.
- Agricultural programmes are most popular on Lokvani, followed by news and entertainment shows.
- 82% of the Lokvani listeners are happy and satisfied with the content of Lokvani.

EVALUATION STUDY OF ODF COMMUNITIES

Contributing to the Swachh Bharat Mission, in 2015 ACF sped up its total sanitation programme - working towards making all its core villages Open Defecation Free. An internal gap mapping exercise of the households without toilets was done in 2015 for all the locations and ACF team started working tirelessly towards bridging the gap. By March 2018, Darlaghat, Nalagarh, Ropar, Bhatapara, Sankrail and Farakka were declared as ODF with all the households having toilet

facilities. It was found that nearly 93 percent of the households in these locations had a toilet within or outside premises and 98 percent of the households, which had access to toilet facility, actually use it.

A little more than half of the toilets were constructed by the households on their own, nearly one fifth of the toilets were constructed with majority Government funding and one tenth were constructed with major support by ACF.

NCD BASELINE ASSESSMENT OF ROPAR & BATHINDA

To systematically assess the need, a baseline assessment was conducted to identify awareness of Non-Communicable Disease (NCD) and NCD related diseases, and the health seeking behavior

By March 2018, 6 of its locations (Darlaghat, Nalagarh, Ropar, Bhatapara, Sankrail and Farakka) were declared as ODF with all the households having toilet facilities.



of the community members. An equal number of males and females were taken in the study, to look for any gender based variations in the pattern of Non-Communicable Diseases.

Evidence showed that the awareness level of NCDs was higher in Ropar than in Bathinda, whilst more respondents in Bathinda reported risks of these diseases. Additionally, a majority reported to have sought treatment for health problems related to NCDs in Bathinda.

Hypertension and Diabetes were most prevalent, with hypertension (28%) being the most common NCD prevalent in Bathinda, whilst 10% of respondents in Ropar suffered from diabetes. Evidences suggest that Ropar was reported better in terms of awareness and less number of people experiencing risks, whereas the picture was opposite in Bathinda in terms of risks and health seeking behaviour.

The study highlights the need for intervention around NCDs and the baseline assessment will be helpful to tailor an NCD programme plan for effective implementation in the area.

SUSTAINABLE LIVELIHOOD DEVELOPMENT - BASELINE STUDY, RAIPUR (CHHATTISGARH)

A baseline assessment of five villages was planned to understand the socio-economic profile and livelihood status of target villages to provide key information to inform the project planning for a new integrated development programme in 5 villages of Tilda block.

The data showed that 85% of farmers in the region cultivate only a single crop in a year with only 3% growing more than two crops. The region is mostly rainfed and very few (3%) farmers had irrigation facilities.

Looking at the various aspects of agricultural practice in the study, it was found that agriculture is still traditional and subsistence in nature and that farm mechanization and adaptation of new methods of agronomic practices have not yet been adopted. The findings were utilized for preparing a Detailed Project Report (DPR) to inform programme planning.

REPORT: MAKING THE CASE FOR CORPORATE ACTION IN WATER

The country is facing an extreme water crisis with 54% of the country's ground water reserves depleting and 21 major Indian cities estimated to run out of groundwater as soon as 2020. Recognizing the severity of the issue, Ambuja Cement Foundation and Samhita collaborated to create a report outlining the argument for

- Department of Elementary Education, GoHP
- Department of Health, GoHP
- Chaudhary Sarwan Kumar Himachal Pradesh Krishi Vishwavidyalaya, Palampur
- College of Veterinary and Animal Sciences, Palampur
- ICDS Department
- Indira Gandhi Medical College, Shimla
- YS Parmar Horticulture and Forestry Agriculture University, Solan
- Artemis Hospital Gurugram
- Cipla Foundation
- HPKVN (Himachal Pradesh Kaushal Vikas Nigam)
- Himfed
- Confederation of Indian Industries

MADHYA PRADESH

- MP Building and Other Construction Workers Welfare Board
- National Urban Livelihood Mission

MAHARASHTRA

- Jalayukt Shivar Abhiyan, Government of Maharashtra
- Hirai Rotary Club Chandrapur (Women)
- Rotary Club of Chandrapur (Men)
- District Skill Development Executive Committee, Chandrapur
- MAVIM, Gondiya
- School Education and Sports Department, Mumbai

PUNJAB

- Department of Agriculture, Govt. of Punjab
- National Trust, Gol
- Rotary Club, Ropar
- Special Olympics Bharat, Punjab Chapter
- Dairy Development Board, Punjab
- Block Development Department
- Punjab Milkfed
- National Institute for Mentally Handicapped, Government of India
- Sarbat Da Bhalla Charitable Trust
- Punjab Skill Development Mission
- Cipla Foundation

RAJASTHAN

- Department of Forest, Government of Rajasthan
- College of Technology and Agriculture Engineering, Udaipur
- Birla Institute of Technology and Science, Pilani
- Rajasthan State AIDS Control Society (RSACS)
- CAZRI, Jodhpur
- Department of Industries Jaipur, Rajasthan
- Tarun Bharat Sangh- Alwar
- Mukhya Mantri Jal Swablamban Abhiyan – Jaipur
- Rajasthan Forestry & Biodiversity Project – Rajasthan Government
- Rajasthan Agriculture Competitiveness Project
- Centre for Micro Finance
- Salaam Mumbai Foundation

UTTARAKHAND

- Uttarakhand Health and Family Welfare Department
- Uttarakhand Skill Development Mission
- Uttarakhand Organic Board
- Bela Health Organization

UTTAR PRADESH

- National Thermal Power Corporation
- Tech Mahindra Foundation
- Spark Minda Foundation
- Building and Wood Workers' International (BWI)
- Dabur India Ltd
- Hindustan Latex Family Planning Promotion Trust

WEST BENGAL

- Samaritan Help Mission, Bankra, Howrah
- Central Institute for Freshwater Aquaculture
- Department of Agriculture – Murshidabad
- Block Development Offices – Farakka, Murshidabad
- Deen Dayal Upadhyaya Grameen Kaushalya Yojana, Government of West Bengal Skill Development
- National Thermal Power Corporation
- Salaam Mumbai Foundation

DIRECTORS' REPORT

As another year draws to a close, I am proud to present the Directors' Report for the 2018-19 financial year which has been significant in many ways. Whilst we celebrated our 25th Anniversary since inception, we also boldly stepped forward to escalate our vision for rural India in the 25 years to come.

We reflect at this time, on the various investments – that we have made in developing our programmes and people, that others have made in helping us expand our reach. These investments are strategic in nature and help us in our ambition to transform the grassroots of the country.

1. FINANCIAL PERFORMANCE

Ambuja Cement Foundation received total funds of Rs. 7396 lakhs during the year. The total expenditure on various activities was Rs. 7106 lakhs.

The Income & Expenditure Account of the Foundation for the year under review showed a surplus of Rs. 290 lakhs (including deficit from assisted project funds) as against surplus of Rs. 70 lakhs in the previous year. The total amount standing to the credit of the Corpus Fund as on 31st March 2019 is Rs. 1861 lakhs as compared to Rs. 1172 lakhs in the previous year.

Apart from the above, the company was able to raise direct funds of Rs. 4513 lakhs which was channelled directly for the community.

2. PROGRAMME THRUSTS

The focal point of our work is in our programmes on the ground, and this year, once again saw us expand our territory, beyond our core communities. Today we are proud to impact change across 11 states and 2073 villages, touching 2.5 million lives.

Livelihoods continues to underpin everything we do at ACF. Whether we are working with farmers in fields, women in enterprises or with youth in industry, we stay firm to our vision of generating increased prosperity for families in rural villages.

We are seeing tangible results. It has been heartening to see young people from agricultural families, join the family business to take farming forward, becoming members of our Farmer Producer Organizations as they go for support and guidance. This reflects the optimism and future that young people in our communities envision for agriculture.

Additionally we are seeing more and more young women coming into skill training, which is something that excites and drives us. Whether it be in traditional, female dominated areas such as beautician or nursing, or in largely male dominated sectors such as electrician, welding or banking and finance, girls are seeing bright futures for themselves in skills. And as each of them graduates, they become torch bearers in their community for other girls to follow suit.

Our primary thrust areas of agriculture, skills and water resource management are witnessing unprecedented growth. Skills alone this year expanded to 30 Skilling centres and we aspire to continue that growth in the years to come. Farming provides the backbone of rural communities and our Better Cotton Initiative, System of Rice Intensification, Aquaculture, Goat Based Livelihood, Poultry and Vegetable Cultivation Initiative, time and again, are seeing farmers reduce costs and increase profits. Profits which are invested in their families and businesses. With the country on the brink of an unprecedented water crisis, we continue to prioritise this critical area to support the drinking water and agricultural needs of communities – taking a holistic, 360 degree approach to addressing both supply and demand issues.

Across all our programme areas, women remain a key focus. By empowering them as both change makers in their communities and breadwinners in their homes, we see a ripple effect of positive change as a result. Health remains a pivotal focus - as the health profile of communities changes, so too does our intervention and our work in non-communicable disease is gaining good traction. We continue our work with schools and SMCs to enhance education and are proud of our efforts to touch the lives of differently-abled children and their families.

3. OPERATIONS

Each of our programmes are underpinned by a robust strategy, which outlines our goals, and the detail of our approach in achieving them. This approach could be in the form of community or need based, creating people's institutions or building confidence to help sustain the programmes. In order to assess and track the progress of our programmes, our Monitoring & Research unit continues to track the effectiveness of our work - which helps us learn, evolve and grow.

We believe it is important to share our learning and the rich knowledge we have gathered from over 25 years of grassroots, rural community development. Bringing together diverse stakeholders from within key sectors, we hosted Knowledge Events in the areas of Water, Non Communicable Disease, Agriculture and Skills. 2018-19 saw the kick-off of a new initiative, CSR Café. The regular event brings together leaders in CSR to discuss learnings in the evolving CSR domain and explore collaborations to effective greater change on the ground.

This year saw us continue our investment in the development of our people, with a particular focus on the upgradation of skills in each vertical to enable delivery of optimum programmes.

4. STRENGTHENING COMMUNICATION

2018-19 was a year of amplification for us, which saw us expand our online presence and raise our voice via our Blog 'Thrive', our digital newsletter and our foray into social media via Facebook, Twitter and LinkedIn. With a vast network of supporters, we felt it important to more diligently keep our stakeholders informed of our work, and build our network among like-minded individuals and organizations.

We also endeavoured to more proactively engage with the media and play a role in contributing to dialogue on the many social issues that form the crux of our work. In doing so, we have forged meaningful relationships with editors and journalists, who like us, care about issues like water, skills and agriculture - which play such a critical role in life in rural India. We were featured in several publications till date and have been covered amongst others by The Afternoon Courier and Dispatch, The Millennium Post, Business Standard India and 94.3 Radio One.

5. BUILDING PARTNERSHIPS

We continued taking strides to expand and deepen our partnerships - with Government, corporates, non-profits and communities. It is by working together, hand in hand with like-minded people that we can continue to expand our reach and impact on the ground.

We have a firm belief in co-creating solutions for rural India, and by pooling resources and capitalising in our respective strength areas, we can be more effective in helping those who need it most, in the remote villages of the interiors of the country.

This year saw us forge some meaningful collaborations with large corporates and it is heartening to work with other enterprises who, like us, are eager to see rural India prosper.

In addition, we have worked to deepen our existing partnerships, through convergence and created value for all stakeholders. Looking forward, we will continue to enrich our existing relationships and invite more visionary leaders to join us in this mission.

6. HUMAN RESOURCES

We are able to realise our objectives and goals due to the untiring efforts of our committed team at the grassroots - led by able leaders who build strategy, direct and drive our programmes on ground. We have a little over 750 team members which consist of management, programme implementation teams, personnel for administration and support functions and an ever growing volunteer & field facilitator base that enable us to extend our work in communities, to whom we express our deep appreciation.

7. DIRECTORS

Mr. Sharadchandra Kale, Mr. P.K.Laheri, Mr. B.L.Taparia and Ms. Pearl Tiwari will retire by rotation at the ensuing Annual General Meeting (AGM) in accordance with the Articles of Association of the Foundation. Being eligible, the above four Directors offer themselves for reappointment. The Directors recommend their reappointment.